

Product datasheet for **RC200958**

PDCL3 (NM_024065) Human Tagged ORF Clone

Product data:

Product Type:	Expression Plasmids
Product Name:	PDCL3 (NM_024065) Human Tagged ORF Clone
Tag:	Myc-DDK
Symbol:	PDCL3
Synonyms:	HTPHLP; PHLP2A; PHLP3; VIAF; VIAF1
Mammalian Cell Selection:	Neomycin
Vector:	pCMV6-Entry (PS100001)
E. coli Selection:	Kanamycin (25 ug/mL)
ORF Nucleotide Sequence:	>RC200958 ORF sequence Red=Cloning site Blue=ORF Green=Tags(s)

TTTTGTATACGACTCACTATAGGGCGGCCGGAATTCGTCGACTGGATCCGGTACCGAGGAGATCTGCC
 GCC**CGATCGC**C

ATGCAGGACCCCAACGCAGACACTGAATGGAATGACATCTTACGCAAAAAGGGTATCTTACCCCCAAGG
 AAAGTCTGAAAGAATTGGAAGAGGAGGCAGAAGAGGAGCAGCGCATCTCCAGCAGTCAGTGGTGAAAAC
 ATATGAAGATATGACTTTGGAAGAGCTGGAGGATCATGAAGACGAGTTAATGAGGAGGATGAACGTGCT
 ATTGAAATGTACAGACGGCGGAGACTGGCTGAGTGAAAGCAACTAACTGAAGAATAAATTCGGAGAAG
 TTTTGGAGATCTCAGGGAAGGATTATGTTCAAGAAGTTACCAAAGCTGGCGAGGGCTTGTGGGTCATCTT
 GCACCTTTACAAACAAGGAATCCCTCTGTGCCCTGATAAATCAGCACCTCAGTGGACTTGCCAGGAAG
 TTTCTGATGTCAAATTTATCAAAGCCATTTCAACAACCTGCATACCCAATTATCCTGATAGGAATCTGC
 CCACGATATTTGTTTACCTGGAAGGAGATATCAAGGCTCAGTTTATTGGTCCTCTGGTGTGGCGGCAT
 GAACCTGACAAGAGATGAGTTGGAATGGAACTGTCTGAATCTGGAGCAATTATGACAGACCTGGAGGAA
 AACCTAAGAAGCCGATTGAAGACGTGTGCTGCTCAGTGCGGCGCTCTGTCTCATGAAGAGGGACA
 GCGATTCCGAGGGTGAC

ACGCGTACGCGGCCGCTCGAGCAGAACTCATCTCAGAAGAGGATCTGGCAGCAAATGATATCCTGGATT
 ACAAGGATGACGACGATAAGGTTTAA


[View online »](#)

Protein Sequence: >RC200958 protein sequence
 Red=Cloning site Green=Tags(s)

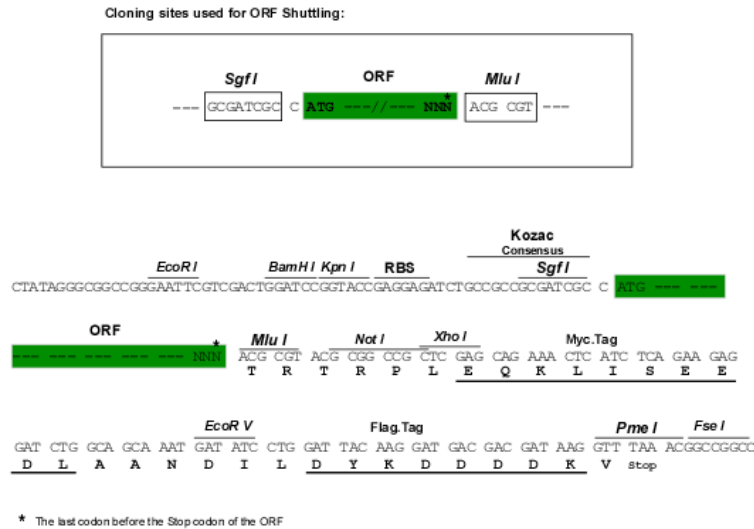
MQDPNADTEWNDILRKKGILPPKESLKELEEEAEEQRIQQSVVKTYEDMTLEELEDHEDEFNEEDERA
 IEMYRRRLAEWKATKLKNKFGEVLEISGKDYVQEVTKAGEGLWVILHL YKQGIPLCALINQHL SGLARK
 FPDVKFIKAISTTCIPNYPDRNLPTIFVYLEGDIKAQF IGPLVFGGMNL TRDELEWKLS ESGAIMTDL EE
 NPKKPIEDVLLSSVRRSVLMKRSDSEGD

TRTRPLEQKLISEEDLAANDILDYKDDDDKV

Chromatograms: https://cdn.origene.com/chromatograms/mk6387_d04.zip

Restriction Sites: SgfI-MluI

Cloning Scheme:



ACCN: NM_024065

ORF Size: 717 bp

OTI Disclaimer: The molecular sequence of this clone aligns with the gene accession number as a point of reference only. However, individual transcript sequences of the same gene can differ through naturally occurring variations (e.g. polymorphisms), each with its own valid existence. This clone is substantially in agreement with the reference, but a complete review of all prevailing variants is recommended prior to use. [More info](#)

OTI Annotation: This clone was engineered to express the complete ORF with an expression tag. Expression varies depending on the nature of the gene.

Components: The ORF clone is ion-exchange column purified and shipped in a 2D barcoded Matrix tube containing 10ug of transfection-ready, dried plasmid DNA (reconstitute with 100 ul of water).

Reconstitution Method:

1. Centrifuge at 5,000xg for 5min.
2. Carefully open the tube and add 100ul of sterile water to dissolve the DNA.
3. Close the tube and incubate for 10 minutes at room temperature.
4. Briefly vortex the tube and then do a quick spin (less than 5000xg) to concentrate the liquid at the bottom.
5. Store the suspended plasmid at -20°C. The DNA is stable for at least one year from date of shipping when stored at -20°C.

Note: Plasmids are not sterile. For experiments where strict sterility is required, filtration with 0.22um filter is required.

RefSeq: [NM_024065.5](#)

RefSeq Size: 1086 bp

RefSeq ORF: 720 bp

Locus ID: 79031

UniProt ID: [Q9H2J4](#)

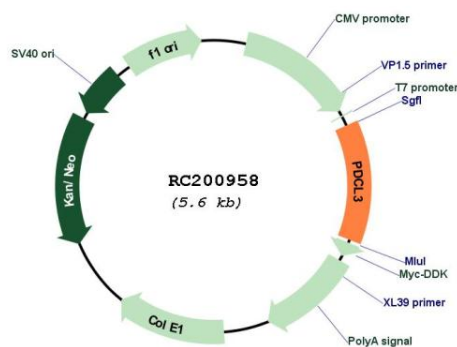
Cytogenetics: 2q11.2

Domains: Phosducin

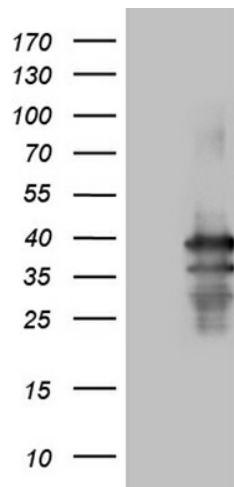
MW: 27.6 kDa

Gene Summary: This gene encodes a member of the phosducin-like protein family and is a putative modulator of heterotrimeric G proteins. The protein shares extensive amino acid sequence homology with phosducin. Members of the phosducin-like protein family have been shown to bind to the beta-gamma subunits of G proteins. [provided by RefSeq, Jul 2008]

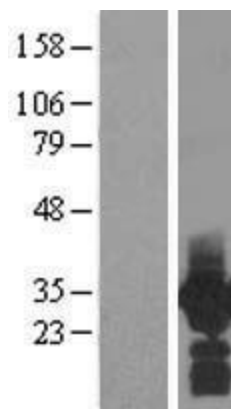
Product images:



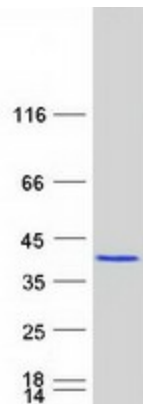
Circular map for RC200958



HEK293T cells were transfected with the pCMV6-ENTRY control (Cat# [PS100001], Left lane) or pCMV6-ENTRY PDCL3 (Cat# RC200958, Right lane) cDNA for 48 hrs and lysed. Equivalent amounts of cell lysates (5 ug per lane) were separated by SDS-PAGE and immunoblotted with anti-PDCL3 (Cat# [TA809771])(1:2000). Positive lysates [LY411381] (100ug) and [LC411381] (20ug) can be purchased separately from OriGene.



Western blot validation of overexpression lysate (Cat# [LY411381]) using anti-DDK antibody (Cat# [TA50011-100]). Left: Cell lysates from untransfected HEK293T cells; Right: Cell lysates from HEK293T cells transfected with RC200958 using transfection reagent MegaTran 2.0 (Cat# [TT210002]).



Coomassie blue staining of purified PDCL3 protein (Cat# [TP300958]). The protein was produced from HEK293T cells transfected with PDCL3 cDNA clone (Cat# RC200958) using MegaTran 2.0 (Cat# [TT210002]).