

## Product datasheet for **RC200955**

### **MXRA8 (NM\_032348) Human Tagged ORF Clone**

#### **Product data:**

Product Type:	Expression Plasmids
Product Name:	MXRA8 (NM_032348) Human Tagged ORF Clone
Tag:	Myc-DDK
Symbol:	MXRA8
Synonyms:	ASP3
Mammalian Cell Selection:	Neomycin
Vector:	pCMV6-Entry (PS100001)
E. coli Selection:	Kanamycin (25 ug/mL)



[View online »](#)

**ORF Nucleotide Sequence:**

>RC200955 ORF sequence  
 Red=Cloning site Blue=ORF Green=Tags(s)

TTTTGTAATACGACTCACTATAGGGCGGCCGGAATTCGTCGACTGGATCCGGTACCGAGGAGATCTGCC  
 GCC**GCGATCGCC**

ATGGCGCTGCCATCCGAATCTGCTTTGGAACTTGTGCTTCTGCAGAGCTCTGCTGTTCTCCTGCACT  
 CAGGGTCCTCGGTACCCGCCGCTGCTGGCAGCTCCGTGGTGTCCGAGTCCGCGGTGAGCTGGGAGCGGG  
 CGCCCGGGCGGTGCTGCGCTGCCAGAGCCCGCATGGTGTGGACCCAGGACCGGCTGCACGACCCGACG  
 CGCGTGTCCACTGGGACCTGCGCGGCCCGGGGGTGGCCCGCGCGGCGCTGCTGGACTTGTACTCGG  
 CGGGGAGCAGCGGTGTACGAGGCGGGGACCGCGCCGCTGGAGCTCTCGGCCTCGGCCTTCGACGA  
 CGGCAACTTCTGCTGCTCATCCGCGGGTGGAGGAGACGACGCGGGGCTGTACACCTGCAACCTGCAC  
 CATCACTACTGCCACCTACGAGAGCCTGGCCGTCCGCTGGAGGTACCGACGGCCCCCGGCCACCC  
 CCGCCTACTGGGACGGCAGAAGGAGGTGCTGGCGGTGGCGCGCGCCACCCCGCCTTCTGACCTGCGT  
 GAACCGCGGGCAGTGTGGACCGACCGGCAGTGGAGGAGCTCAACAGTGGTGCCTGGGACCGCGAG  
 CGCCCGGGTCCCGCACGACCGCGCGGACCGCCTGCTGGACCTTACCGGTGCGGCGAGCGCCGCGCT  
 ACGGGCCCTTTTTCTGCGCGACCGGTGGCTGTGGGCGCGGATGCCTTTGAGCGCGGTGACTTCTCACT  
 GCGTATCGAGCCGCTGGAGGTGCGCGACGAGGGCACCTACTCTGCCACCTGCACCACCATTACTGTGGC  
 CTGCACGAACGCCCGCTTCCACCTGACGGTCCGCGAACCCACGCGGAGCCGCCCGCCCGGGGCTCTC  
 CGGGCAACGGCTCCAGCCACAGCGGGCGCCAGGCCACAGCCCACTGGCGCGCGGCCACAACGTCAT  
 CAATGTATCGTCCCGAGAGCCGAGCCACTTCTCCAGCAGCTGGGCTACGTGCTGGCCACGCTGCTG  
 CTCTTCTCTGCTACTGGTCACTGTCTCTGGCCCGCCGAGCGCCCGGAGGCTACGAATACTCGG  
 ACCAGAAGTCGGGAAAGTCAAAGGGGAAGGATGTTAACTTGGCGGAGTTCGCTGTGGCTGCAGGGGACCA  
 GATGCTTTACAGGAGTGAGGACATCCAGCTAGATTACAAAAACAACATCCTGAAGGAGAGGGCGGAGCTG  
 GCCCACAGCCCCCTGCCTGCCAAGTACATCGACCTAGACAAAGGGTTCGGAAGGAGAACTGCAAA

**CTCGAGCAGAACTCATCTCAGAAGAGGATCTGGCAGCAAATGATATCCTGGATTACAAGGATGACGACG  
 ATAAGGTTAA**

**Protein Sequence:**

>RC200955 protein sequence  
 Red=Cloning site Green=Tags(s)

MALPSRILLWKL VLLQSSAVLLHSGSSVPAAGSSVSVSESAVSWEAGARAVLRCQSPRMVWTQDRLHDRQ  
 RVLHWDLRGPGGGPARRLLDLYSAGEQRVYEARDRGRLELSASAFDDGNFSLIRAVEETDAGLYTCNLH  
 HHYCHLYESLAVRLEVTDGPPATPAYWDGEKEVLAVARGAPALLTCVNRGHVWTDHRVVEEAQVVHWRQ  
 PPGVPHDRADRLLDLYASGERRAYGPLFLRDRVAVGADAFERGFSLRIEPLVADEGTYSCHLHHHYCG  
 LHERRVFHLTVAEPHAEPPIRGSPGNGSSHGAPGPDPTLARGHNVINIVPESRAHFFQQLGYVLATLL  
 LFIILLVTVLLAARRRRGGYEYSDQKSGKSKGKDVNLAEFAVAAGDQMLYRSEDIQLDYKNNILKERAEL  
 AHSPLPAKYIDLKDFRKENCK

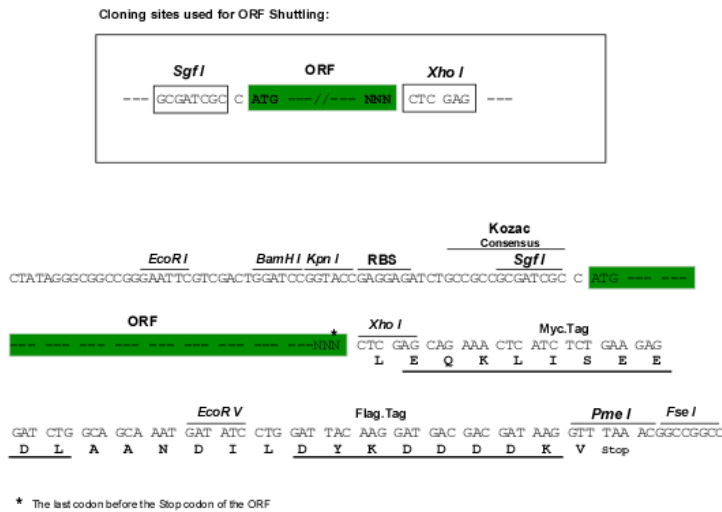
**LEQKLISEEDLAANDILDYKDDDDKV**

**Chromatograms:**

[https://cdn.origene.com/chromatograms/mk6273\\_b03.zip](https://cdn.origene.com/chromatograms/mk6273_b03.zip)

**Restriction Sites:**

SgfI-XhoI

**Cloning Scheme:**


**ACCN:** NM\_032348

**ORF Size:** 1326 bp

**OTI Disclaimer:** The molecular sequence of this clone aligns with the gene accession number as a point of reference only. However, individual transcript sequences of the same gene can differ through naturally occurring variations (e.g. polymorphisms), each with its own valid existence. This clone is substantially in agreement with the reference, but a complete review of all prevailing variants is recommended prior to use. [More info](#)

**OTI Annotation:** This clone was engineered to express the complete ORF with an expression tag. Expression varies depending on the nature of the gene.

**Components:** The ORF clone is ion-exchange column purified and shipped in a 2D barcoded Matrix tube containing 10ug of transfection-ready, dried plasmid DNA (reconstitute with 100 ul of water).

**Reconstitution Method:**

1. Centrifuge at 5,000xg for 5min.
2. Carefully open the tube and add 100ul of sterile water to dissolve the DNA.
3. Close the tube and incubate for 10 minutes at room temperature.
4. Briefly vortex the tube and then do a quick spin (less than 5000xg) to concentrate the liquid at the bottom.
5. Store the suspended plasmid at -20°C. The DNA is stable for at least one year from date of shipping when stored at -20°C.

**RefSeq:** [NM\\_032348.4](#)

**RefSeq Size:** 2534 bp

**RefSeq ORF:** 1329 bp

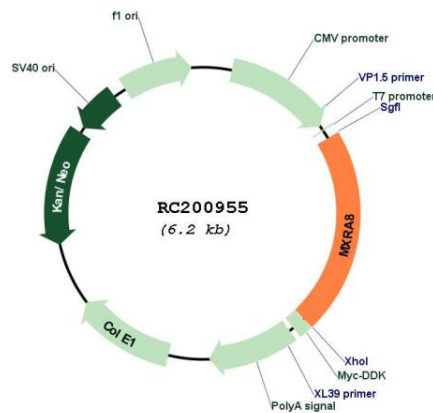
**Locus ID:** 54587

**UniProt ID:** [Q9BRK3](#)

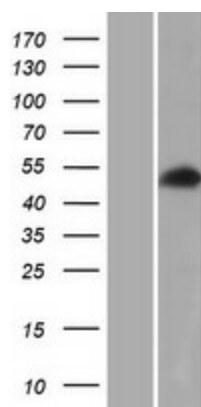
**Cytogenetics:** 1p36.33

<b>Protein Families:</b>	Transmembrane
<b>MW:</b>	49.1 kDa
<b>Gene Summary:</b>	<p>Transmembrane protein which can modulate activity of various signaling pathways, probably via binding to integrin ITGAV:ITGB3 (PubMed:22492581, PubMed:23386276). Mediates heterophilic cell-cell interactions in vitro (By similarity). Inhibits osteoclastogenesis downstream of TNFSF11/RANKL and CSF1, where it may function by attenuating signaling via integrin ITGB3 and MAP kinase p38 (By similarity). Plays a role in cartilage formation where it promotes proliferation and maturation of growth plate chondrocytes (By similarity). Stimulates formation of primary cilia in chondrocytes (By similarity). Enhances expression of genes involved in the hedgehog signaling pathway in chondrocytes, including the hedgehog signaling molecule IHH; may also promote signaling via the PTHLH/PTHrP pathway (By similarity). Plays a role in angiogenesis where it suppresses migration of endothelial cells and also promotes their apoptosis (PubMed:23386276). Inhibits VEGF-induced activation of AKT and p38 MAP kinase in endothelial cells (PubMed:23386276). Also inhibits VTN (vitronectin)-mediated integrin ITGAV:ITGB3 signaling and activation of PTK2/FAK (PubMed:23386276). May play a role in the maturation and maintenance of the blood-brain barrier (By similarity). [UniProtKB/Swiss-Prot Function]</p>

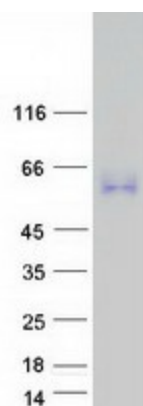
### Product images:



Circular map for RC200955



Western blot validation of overexpression lysate (Cat# [LY410185]) using anti-DDK antibody (Cat# [TA50011-100]). Left: Cell lysates from untransfected HEK293T cells; Right: Cell lysates from HEK293T cells transfected with RC200955 using transfection reagent MegaTran 2.0 (Cat# [TT210002]).



Coomassie blue staining of purified MXRA8 protein (Cat# [TP300955]). The protein was produced from HEK293T cells transfected with MXRA8 cDNA clone (Cat# RC200955) using MegaTran 2.0 (Cat# [TT210002]).