

Product datasheet for **RC200954**

TSEN34 (NM_024075) Human Tagged ORF Clone

Product data:

Product Type: Expression Plasmids
Product Name: TSEN34 (NM_024075) Human Tagged ORF Clone
Tag: Myc-DDK
Symbol: TSEN34
Synonyms: LENG5; PCH2C; SEN34; SEN34L
Mammalian Cell Selection: Neomycin
Vector: pCMV6-Entry (PS100001)
E. coli Selection: Kanamycin (25 ug/mL)
ORF Nucleotide Sequence: >RC200954 ORF sequence
Red=Cloning site Blue=ORF Green=Tags(s)

TTTTGTAATACGACTCACTATAGGGCGGCCGGAATTCGTCGACTGGATCCGGTACCGAGGAGATCTGCC
GCC**CGATCGC**C

ATGCTGGTGGTGGAGGTGGCGAACGGCCGCTCCCTGGTGTGGGAGCCGAGGCGGTGCAGGCCCTCCGGG
AGCGCCTGGGTGTGGGGGCCGACGGTAGGCGCCCTGCCCGCGGGCCCGCCAGAAGCTCGCGCCTGGG
CCTCCCGCTGCTGCTGATGCCCGAAGAGGCGGGCTCTTGGCCGAGATCGGCGCCGTGACTCTGGTCAGC
GCCCGCGTCCAGACTCTCGGCACCACAGCCTGGCCCTGACATCCTTCAAGCGCCAGCAAGAGGAGAGCT
TCCAGGAGCAGAGCGCCTTGGCAGCTGAGGCCCGGAGACCCGTCGTGAGGAGCTCCTGGAGAAGATTAC
GGAGGGCCAGGCTGCTAAGAAGCAGAACTAGAACAGGCTTCAAGGGCCAGCTCAAGCCAGGAGGCCGGC
TCGAGCCAGGCTGCCAAAGAGGATGAGACCAGTATGGCCAGGCTTCGGGAGAGCAGGAGGAAGCTGGCC
CCTCGTCTCCCAAGCAGGACCCCTCAAATGGGGTAGCCCCCTTGCCAGATCTGCTCTCCTTGTCCAGCT
GGCCACTGCCAGGCTCGACCGGTCAAGGCCAGGCCCTGGACTGGCGTGTCCAGTCTAAAGACTGGCCC
CACGCCGGCCGCCCTGCCACGAGCTGCGCTACAGTATCTACAGAGACCTGTGGGAGCGAGGCTTCTTCC
TCAGTGGCGTGGCAAGTTCGGAGGTGACTTCTGGTCTATCCTGGTACCCCCCTCCGCTTCCACGCCCA
TTATATCGCTCAGTGTGGGCCCTGAGGACACCATCCCACTCCAAGACCTGGTTGCTGCTGGGCGCCTT
GGAACCAGCGTCAGAAAGACCCCTGCTCCTCTGTTCTCCGACCCCTGATGGTAAGGTGGTCTACACCTCCC
TGCAATGGGCTAGCCTGCAG

ACGCGTACGCGGCCGCTCGAGCAGAACTCATCTCAGAAGAGGATCTGGCAGCAAATGATATCCTGGATT
ACAAGGATGACGACGATAAGGTTTAA



[View online »](#)

Protein Sequence: >RC200954 protein sequence
Red=Cloning site Green=Tags(s)

MLVVEVANGRSLVWGAEAVQALRERLGVGGRTVGALPRGPRQNSRLGLPLLLMPEEARLLAEIGAVTLVS
 APRPDSRHSLALTSFKRQEEESFQEQSALAAEARETRRQELLEKITEGQAAKKQKLEQASGASSSQEAG
 SSQAAKEDETSDGQASGEQEEAGPSSSQAGPSNGVAPLPRSALLVQLATARPRPVKARPLDWRVQSKDWP
 HAGRPAHELRYSIYRDLWERGFLLSAAGKFGGDFLVYPGDPLRFHAHYIAQCWAPEDTIPLQDLVAAGRL
 GTSVRKTLTLLCSPQPDGKVVYVYTSLQWASLQ

TRTRPLEQKLISEEDLAANDILDYKDDDDKV

Chromatograms: https://cdn.origene.com/chromatograms/mk6144_f12.zip

Restriction Sites: SgfI-MluI

Cloning Scheme:



ACCN: NM_024075

ORF Size: 930 bp

OTI Disclaimer: The molecular sequence of this clone aligns with the gene accession number as a point of reference only. However, individual transcript sequences of the same gene can differ through naturally occurring variations (e.g. polymorphisms), each with its own valid existence. This clone is substantially in agreement with the reference, but a complete review of all prevailing variants is recommended prior to use. [More info](#)

OTI Annotation: This clone was engineered to express the complete ORF with an expression tag. Expression varies depending on the nature of the gene.

Components: The ORF clone is ion-exchange column purified and shipped in a 2D barcoded Matrix tube containing 10ug of transfection-ready, dried plasmid DNA (reconstitute with 100 ul of water).

Reconstitution Method:

1. Centrifuge at 5,000xg for 5min.
2. Carefully open the tube and add 100ul of sterile water to dissolve the DNA.
3. Close the tube and incubate for 10 minutes at room temperature.
4. Briefly vortex the tube and then do a quick spin (less than 5000xg) to concentrate the liquid at the bottom.
5. Store the suspended plasmid at -20°C. The DNA is stable for at least one year from date of shipping when stored at -20°C.

Note: Plasmids are not sterile. For experiments where strict sterility is required, filtration with 0.22um filter is required.

RefSeq: [NM_024075.5](#)

RefSeq Size: 2294 bp

RefSeq ORF: 933 bp

Locus ID: 79042

UniProt ID: [Q9BSV6](#)

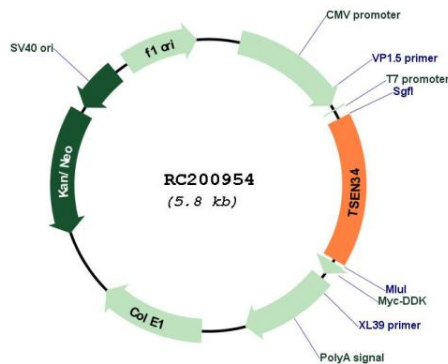
Cytogenetics: 19q13.42

Domains: tRNA_int_endo

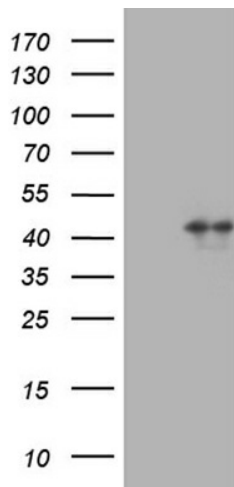
MW: 33.7 kDa

Gene Summary: This gene encodes a catalytic subunit of the tRNA splicing endonuclease, which catalyzes the removal of introns from precursor tRNAs. The endonuclease complex is also associated with a pre-mRNA 3-prime end processing factor. A mutation in this gene results in the neurological disorder pontocerebellar hypoplasia type 2. Multiple alternatively spliced variants, encoding the same protein, have been identified.[provided by RefSeq, Oct 2009]

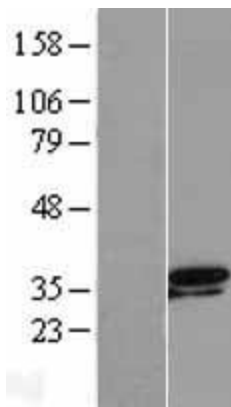
Product images:



Circular map for RC200954



HEK293T cells were transfected with the pCMV6-ENTRY control (Cat# [PS100001], Left lane) or pCMV6-ENTRY TSEN34 (Cat# RC200954, Right lane) cDNA for 48 hrs and lysed. Equivalent amounts of cell lysates (5 ug per lane) were separated by SDS-PAGE and immunoblotted with anti-TSEN34 (Cat# [TA810146])(1:2000). Positive lysates [LY402979] (100ug) and [LC402979] (20ug) can be purchased separately from OriGene.



Western blot validation of overexpression lysate (Cat# [LY402979]) using anti-DDK antibody (Cat# [TA50011-100]). Left: Cell lysates from untransfected HEK293T cells; Right: Cell lysates from HEK293T cells transfected with RC200954 using transfection reagent MegaTran 2.0 (Cat# [TT210002]).