

Product datasheet for **RC200950**

KBTBD6 (NM_152903) Human Tagged ORF Clone

Product data:

Product Type:	Expression Plasmids
Product Name:	KBTBD6 (NM_152903) Human Tagged ORF Clone
Tag:	Myc-DDK
Symbol:	KBTBD6
Mammalian Cell Selection:	Neomycin
Vector:	pCMV6-Entry (PS100001)
E. coli Selection:	Kanamycin (25 ug/mL)



[View online »](#)

**ORF Nucleotide
Sequence:**

>RC200950 ORF sequence
 Red=Cloning site Blue=ORF Green=Tags(s)

TTTTGTAATACGACTCACTATAGGGCGGCCGGGAATTCGTCGACTGGATCCGGTACCGAGGAGATCTGCC
 GCC**CGCATCGCC**

ATGCAGTCCCGGGAAGACGCCCCGCGCTCTCGCCGCTAGCCAGTCCCCGTGGTGGGAAGCGGCCCAAGA
 AGATTCACAAACCCACAGTTTCGGCCTTTTTCACGGGTCCAGAGGAATTAAGGACACGGCCATTCTGC
 AGCCCTGCTGGCAGACTCAAGTCTTCTACGATGCGCGGCTGCTGTGTGATGTGACCATCGAGGTGGT
 ACGCCTGGCAGCGGGCTGGCACGGGTCGCTGTTCCCCTGCAACCGCAATGTGCTGGCCGCGCATGTC
 CCTACTTCAAGAGCATGTTACAGGTGGCATGTACGAGAGCCAGCAGGCCAGCGTGACCATGCACGATGT
 GGACGCCGAGTCTTCGAGGTGTTGGTCGACTACTGCTACACGGGTCGTGTCTCTCAGTGAGGCCAAC
 GTGGAGCGCCTGTACGCGGCCCTCCGACATGCTACAGCTGGAATATGTGCGGGAAGCCTGTGCCTCCTTCT
 TAGCCCGACGCTTGACCTGACCAACTGCACCGCCATCCTCAAGTTTGCAGATGCCTTTGGCCATCGCAA
 GCTGCGATCCCAGGCCAGTCTATATAGCTCAGAACTCAAGCAACTCAGCCACATGGGTTCAATTCCGG
 GAGGAGACTCTAGCAGATCTGACCTGGCCAGCTGCTGGCTGTCTGCGCTTGATAGTCTGGAGCTGG
 AGAGTGAGCAGACAGTGTGCCATGTGGCAGTGCAGTGGCTGGAGGCTGCTCCCAAAGAGCGGGTCCAG
 TGCTGCAGAAGTCTTCAAGTGCCTGCGCTGGATGCACTTCACTGAAGAAGATCAGGACTACTTAGAAGGG
 CTGCTGACCAAGCCCATCGTGAAGAAGTACTGCCTGGACGTTATTGAAGGGGCCCTGCAGATGCGCTATG
 GTGACCTGTTGTACAAGTCTCTGGTGCCAGTGCCAAACAGCAGCAGCAGCAGTAGCAGCAGCAACTCTCT
 TGTATCTGCAGCAGAAAAACCCCCAGAGACTGGGTA TGTGTGCCAAGGAGATGGTGATCTTCTTTGGA
 CACCCAGAGATCCCTTCTCTGCTGTGATCCATACTCGGGGGACCTTTACAAAGTGCCGTCACCTTTGA
 CCTGTCTGGCTCACACTAGGACTGTCAACTCTAGCTGTCTGTATCTCTCCTGACCATGCATCTATCT
 AGCTGCTCAGCCAGGACAGACCTCTGGGTGTATAAACCAGCTCAGAATAGTTGGCAGCAACTTGCAGAT
 CGTTGCTGTGTCGTGAGGGCATGGATGTGGCATACTCAATGGCTATATCTACATTTTGGGGGGCGAG
 ACCCTATTACTGGAGTTAAGTTGAAGGAAGTGAATGCTACAATGTTAAGAGAAACCAGTGGGCATTGGT
 GGCTCCACTGCCCACTTCTTTTTATCCTTTGACCTAATGGTAATTCGAGACTATCTCTATGCTCTCAAC
 AGTAAGCGCATGTTCTGTTATGATCCTAGCCACAATATGTGGCTGAAGTGCCTTCTCTGAAGCGCAATG
 ACTTTAGGAAGCCTGCGTCTTCAATGAGGAGATCTATTGTATCTGTGATATCCCAGTCATGAAGGTCTA
 CAACCCAGTTAGGGCAGAATGGAGGCAATGAATAATATCCCTTGGTCTCAGAGACCAACAACACTACAGA
 ATTATCAAGCATGGCCAAAAATTGTTGCTCATCACCTCTCGACCCACAGTGGAAAAAGAACCGGGTGA
 CTGTGTATGAATATGATATTAGGGGAGACCAATGGATTAATATAGGTACCACATTAGGCCTCTTGCAATT
 TGATTCTAACTTTTTTGCCTCTCTGCTCGTGTATCCTTCTGCCTTGAACCTGGTCAGAGTTTCCTC
 ACTGAAGAAGAAGAAATACCAAGTGAGTCTAGCACTGAATGGGACTTAGGTGGATTAGTGCAGCCAGACT
 CTGAGTCAGGAAGTTCAAGTTCTTTCTGATGATGATTTTTGGGTGCGTGTAGCGCCTCAG

ACGCGTACGCGGGCCGCTCGAGCAGAACTCATCTCAGAAGAGGATCTGGCAGCAATGATATCCTGGATT
 ACAAGGATGACGACGATAAGGTTTAA

Protein Sequence: >RC200950 protein sequence
Red=Cloning site Green=Tags(s)

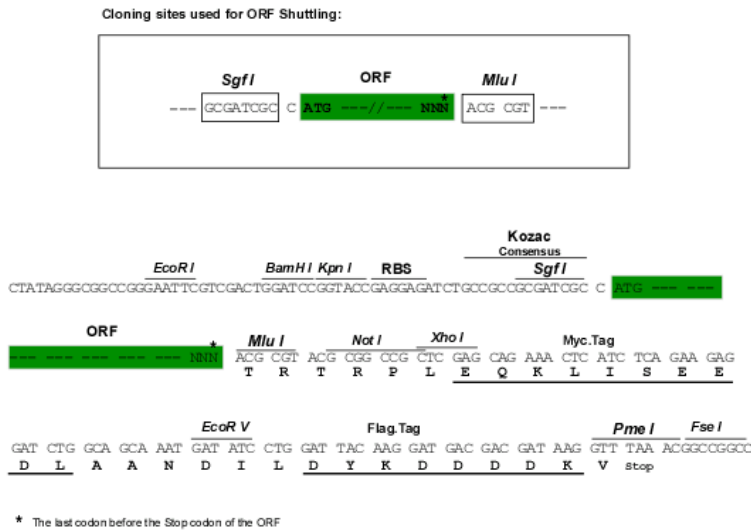
MQSREDAPRSRRLASPRGGKRPKKIHKPTVSAFFTGPPEELKDTAHSALLAQLKSFYDARLLCDVTIEV
 TPGSGPGTGRLPCNRNVLAAACPYFKSMFTGGMYESQQASVTMHDVDAESFEVLVDYCYTGRVSLSEAN
 VERLYAASDMLQLEYVREACASFLARRLDLTNCTAILKFADAFGHRKLRSAQSYIAQNFQQLSHMGSIR
 EETLADLTLAQLLAVLRDLSLVESEQTVCHVAVQWLEAAPKERGPSAAEVFKCVRWMHFTEEDQDYLEG
 LLTKPIVKKYCLDVEGALQMRYGDLLYKSLVPVNSSSSSSSSNSLVSAAENPPQRLGMCAKEMVIFFG
 HPRDPFLCCDPYSGDLYKVPSPLTCLAHTRTVTTLAVCI SPDHDIYLAAPRPTDLWVYKPAQNSWQQLAD
 RLLCREGMDVAYLNGYIYLGGRPITGVKLKEVECYNVKRNQWALVAPLPHSFLSFDLMVIRDYLYALN
 SKRMFCYDP SHNMWLKCVSLKRNDQAEACVFNEE IYCIDIPVMKYVNPVRAEWRQMNIPLVSETNNYR
 I IKHGQKLLLITSRTQWKKNRVTVYEYDIRGDQWINIGTTLGLLQFDSNFFCL SARVYPSCLEPGQSFL
 TEEEEIPSESSTEWDLGGFSEPDSESGSSSSLSDDDFWVRVAPQ

TRTRPLEQKLISEEDLANDILDYKDDDDKV

Chromatograms: https://cdn.origene.com/chromatograms/mk6690_h05.zip

Restriction Sites: SgfI-MluI

Cloning Scheme:



ACCN: NM_152903

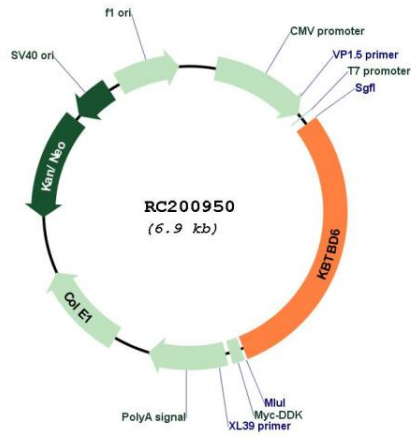
ORF Size: 2022 bp

OTI Disclaimer: The molecular sequence of this clone aligns with the gene accession number as a point of reference only. However, individual transcript sequences of the same gene can differ through naturally occurring variations (e.g. polymorphisms), each with its own valid existence. This clone is substantially in agreement with the reference, but a complete review of all prevailing variants is recommended prior to use. [More info](#)

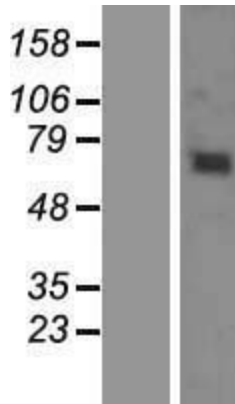
OTI Annotation: This clone was engineered to express the complete ORF with an expression tag. Expression varies depending on the nature of the gene.

Components:	The ORF clone is ion-exchange column purified and shipped in a 2D barcoded Matrix tube containing 10ug of transfection-ready, dried plasmid DNA (reconstitute with 100 ul of water).
Reconstitution Method:	<ol style="list-style-type: none">1. Centrifuge at 5,000xg for 5min.2. Carefully open the tube and add 100ul of sterile water to dissolve the DNA.3. Close the tube and incubate for 10 minutes at room temperature.4. Briefly vortex the tube and then do a quick spin (less than 5000xg) to concentrate the liquid at the bottom.5. Store the suspended plasmid at -20°C. The DNA is stable for at least one year from date of shipping when stored at -20°C.
Note:	Plasmids are not sterile. For experiments where strict sterility is required, filtration with 0.22um filter is required.
RefSeq:	<u>NM_152903.4</u> , <u>NP_690867.3</u>
RefSeq Size:	5228 bp
RefSeq ORF:	2025 bp
Locus ID:	89890
UniProt ID:	<u>Q86V97</u>
Cytogenetics:	13q14.11
Domains:	BTB, Kelch
MW:	76.1 kDa
Gene Summary:	As part of the CUL3(KBTBD6/7) E3 ubiquitin ligase complex functions as a substrate adapter for the RAC1 guanine exchange factor (GEF) TIAM1, mediating its 'Lys-48' ubiquitination and proteasomal degradation (PubMed:25684205). By controlling this ubiquitination, regulates RAC1 signal transduction and downstream biological processes including the organization of the cytoskeleton, cell migration and cell proliferation (PubMed:25684205). Ubiquitination of TIAM1 requires the membrane-associated protein GABARAP which may restrict locally the activity of the complex (PubMed:25684205).[UniProtKB/Swiss-Prot Function]

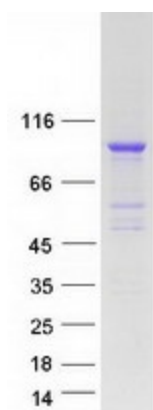
Product images:



Circular map for RC200950



Western blot validation of overexpression lysate (Cat# [LY407202]) using anti-DDK antibody (Cat# [TA50011-100]). Left: Cell lysates from untransfected HEK293T cells; Right: Cell lysates from HEK293T cells transfected with RC200950 using transfection reagent MegaTran 2.0 (Cat# [TT210002]).



Coomassie blue staining of purified KBTBD6 protein (Cat# [TP300950]). The protein was produced from HEK293T cells transfected with KBTBD6 cDNA clone (Cat# RC200950) using MegaTran 2.0 (Cat# [TT210002]).