

## Product datasheet for RC200949L1

### ABCB6 (NM\_005689) Human Tagged Lenti ORF Clone

#### Product data:

Product Type:	Expression Plasmids
Product Name:	ABCB6 (NM_005689) Human Tagged Lenti ORF Clone
Tag:	Myc-DDK
Symbol:	ABCB6
Synonyms:	ABC; LAN; MTABC3; PRP; umat
Mammalian Cell Selection:	None
Vector:	pLenti-C-Myc-DDK (PS100064)
E. coli Selection:	Chloramphenicol (34 ug/mL)
ORF Nucleotide Sequence:	The ORF insert of this clone is exactly the same as(RC200949).
Restriction Sites:	SgfI-MluI
Cloning Scheme:	

Cloning sites used for ORF Shuttling:



\* The last codon before the Stop codon of the ORF.

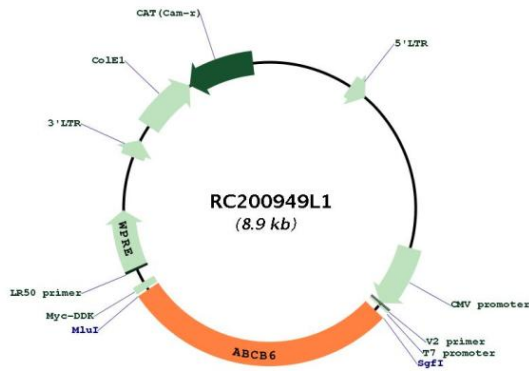
ACCN:	NM_005689
ORF Size:	2526 bp



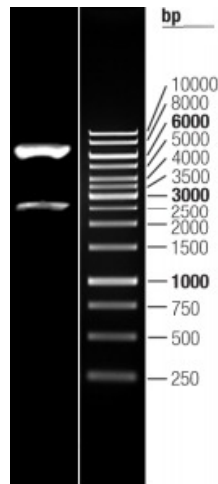
[View online >](#)

<b>OTI Disclaimer:</b>	The molecular sequence of this clone aligns with the gene accession number as a point of reference only. However, individual transcript sequences of the same gene can differ through naturally occurring variations (e.g. polymorphisms), each with its own valid existence. This clone is substantially in agreement with the reference, but a complete review of all prevailing variants is recommended prior to use. <a href="#">More info</a>
<b>OTI Annotation:</b>	This clone was engineered to express the complete ORF with an expression tag. Expression varies depending on the nature of the gene.
<b>Components:</b>	The ORF clone is ion-exchange column purified and shipped in a 2D barcoded Matrix tube containing 10ug of transfection-ready, dried plasmid DNA (reconstitute with 100 ul of water).
<b>Reconstitution Method:</b>	<ol style="list-style-type: none"><li>1. Centrifuge at 5,000xg for 5min.</li><li>2. Carefully open the tube and add 100ul of sterile water to dissolve the DNA.</li><li>3. Close the tube and incubate for 10 minutes at room temperature.</li><li>4. Briefly vortex the tube and then do a quick spin (less than 5000xg) to concentrate the liquid at the bottom.</li><li>5. Store the suspended plasmid at -20°C. The DNA is stable for at least one year from date of shipping when stored at -20°C.</li></ol>
<b>RefSeq:</b>	<a href="#">NM_005689.1</a>
<b>RefSeq Size:</b>	3021 bp
<b>RefSeq ORF:</b>	2529 bp
<b>Locus ID:</b>	10058
<b>UniProt ID:</b>	<a href="#">Q9NP58</a>
<b>Cytogenetics:</b>	2q35
<b>Domains:</b>	ABC_membrane, ABC_tran, AAA
<b>Protein Families:</b>	Druggable Genome, Transmembrane
<b>Protein Pathways:</b>	ABC transporters
<b>MW:</b>	93.9 kDa
<b>Gene Summary:</b>	This gene encodes a member of the ATP-binding cassette (ABC) transporter superfamily. ABC proteins transport various molecules across extra- and intra-cellular membranes. This protein is a member of the heavy metal importer subfamily and plays a role in porphyrin transport. This gene is the molecular basis of the Langereis (Lan) blood group antigen and mutations in this gene underlie familial pseudohyperkalemia and dyschromatosis universalis hereditaria. [provided by RefSeq, Mar 2017]

Product images:



Circular map for RC200949L1



Double digestion of RC200949L1 using SgfI and MluI