

## Product datasheet for **RC200948**

### MEPCE (NM\_019606) Human Tagged ORF Clone

#### Product data:

Product Type:	Expression Plasmids
Product Name:	MEPCE (NM_019606) Human Tagged ORF Clone
Tag:	Myc-DDK
Symbol:	MEPCE
Synonyms:	BCDIN3
Mammalian Cell Selection:	Neomycin
Vector:	pCMV6-Entry (PS100001)
E. coli Selection:	Kanamycin (25 ug/mL)



[View online »](#)

ORF Nucleotide  
Sequence:

>RC200948 ORF sequence  
Red=Cloning site Blue=ORF Green=Tags(s)

TTTTGTAATACGACTCACTATAGGGCGGCCGGGAATTCGTCGACTGGATCCGGTACCGAGGAGATCTGCC  
GCCGCGATCGCC

ATGATCGAGATGGCGCGGAGAAGGAGCCGTTTCTGGTGCCGGCCCCGCCGCCGCTCAAAGATGAGT  
CGGGCGGAGGGGGCGGCCCCACGGTGCCACCGCACCAAGAGGCCGCTCTGGGGAGCTCCGCGCGGGAC  
GGAGCGTGGTCCGGTCTGTGCGGCCATCTGCGGGTCCCCAGCCGCTGCGGTCCGGTCCGGAAAGCCCC  
GGGGCCGCGGCCACCTCCTCCAGTGGTCCCCAGGCGCAGCAGCACCGAGGGGGCGGCCCCAGGCGCAGT  
CGCATGGGGAGGCCGCTGTGGATCCCCGGGGCGAGCCGCTCCCCGGACGTGGGGAGGAGCGCCG  
GGGAGGGGGCGGGACAGAGCTGGGTCCCCCTGCTCCTCTCGACCCCGCAATGGCTATCAGCCCCACCG  
CCACCTGGGGGGCGGGGCAAGAGGAGAAATAGCTGTAATGTAGGGGGAGGCGGGGGAGGCTTCAAAC  
ATCCGGCCTTCAAGAGGCGCAGGCGGGTGAATTCGGACTGTGACTCTGTGTTACCCTCCAATTCCTCCT  
GGGGGCAATATCTTTGATCCCCGAACCTGAATAGCCTCCTGGATGAGGAAGTGAGCCGCACTCTCAAC  
GCGGAGACCCCTAAGTCATCCCCCTTCCGGCCAAAGGGCGAGATCCGGTGGAGATCCTCATCCCCAAAG  
ATATTACTGACCCGCTCAGTCTCAATACTTGAAGTGTGAGGGCCATGTAGTTCTTGGCTTCGCCACTCAA  
GACTGGTCCGAAGCGGCATAGACACCGGGGACAGCACCACCAGCAGCAGCAGGACGCCGGAGGGAGTGAG  
AGTCACCCCGTGGCGCCACAGCCCTCTACCCCTTACTCCACGGGGAGGGCGCTCAGCAGCCCGC  
GGCACAGGGGCCAGAACCGGGATGCCCCCAACCTATGAACTCAACACAGCCATCAACTGCAGGGATGA  
AGTGGTGTCTCCCTTCCATCTGCTCTGAGGGTCCCTCAGGCTCCCTATCAGCCCTCCAGTGCCTCA  
GTTATCTCTGCACCCCATCTTCTCCTCCCGACATCGAAACGTCGCAGGACTTCCAGCAAGTCGGAGG  
CAGGGGTAGGGGTGGAGGCCAGGGTCCAAGGAAAAGGGCCGAGGGAGTTGGGGAGGCCGCCACCACCA  
CCACCACCCACTGCCTGCAGCAGGCTTCAAAAAGCAACAGCGCAAGTTCCAGTATGGGAATTATTGCAAA  
TACTATGGGTACCGCAATCCTTCTGTGAGGATGGGCGCCTTCGGGTGTTGAAGCCTGAGTGGTTTCGGG  
GCCGGGACGCTCTAGATCTGGGCTGCAATGTGGGCCATCTGACCTGAGCATTGCCTGCAAGTGGGGCCC  
GTCCCGCATGGTGGGCTGGATATCGATTCCCGGCTCATCCATTCTGCCCGCCAAAACATCCGACTAC  
CTTCCGAGGAGCTGCGTCTCCACCCAGACTTTGGAAGGGGACCCGGGGCAGAGGGTGGGAAGGGA  
CCACCACCGTTCGAAAGAGGAGCTGCTCCAGCCTCGTACTGCCAGCCGGGGTCCCATCGTGGCCC  
CCAAGTGCCTTGGATGGAGCGGACACATCAGTCTTCCCAACAATGTTGTCTTCGTACCGGTAATTAT  
GTGCTGGATCGAGATGACCTGGTGGAGGCCAAACACCTGAGTATGATGTGGTGTCTGCCTCAGCCTCA  
CCAAGTGGGTGCATCTGAACTGGGGAGACGAGGGCCTGAAGCGCATGTTTCGCCGGATCTACCGGCACCT  
ACGCCCTGGGGGATCCTGGTCTAGAGCCCCAACCTGGTCTGTCGTATGGCAAGAGAAAGACTCTTACA  
GAAACGATCTACAAGAACTACTACCAATCCAATTGAAGCCAGAGCAGTTTCAATCCTACCTGACATCCC  
CAGACGTGGGCTTCTCCAGCTATGAGCTTGTGGCCACACCCACAACACCTCTAAAGGCTTCCAGCGTCC  
TGTGTACCTGTTCCAAAGGCCGATCCCCAGCCAC

ACGCGTACGCGGGCGCTCGAGCAGAACTCATCTCAGAAGAGGATCTGGCAGCAATGATATCCTGGATT  
ACAAGGATGACGACGATAAGGTTTAA

**Protein Sequence:** >RC200948 protein sequence  
Red=Cloning site Green=Tags(s)

```

MIEMAAEKPFLLVPAPPPPLKDESGGGGGPTVPPHQEAASGELRGGTERGPGRCAPSAGSPAAAVGRES
P
GAAATSSSGPQAQQHRGGGPQAQSHGEARLSDPPGRAAPPDVGEERRGGGTELGPAPPRPRNGYQPHR
P
PPGGGGKRRNSCNVGGGGGFKHPAFKRRRRVNSDCDSVLP SNFLLGGNIFDPLNLNSLLDEEVSRTL N
A
ETPKSSPLPAKGRDPVEILIPKIDITDPLSLNTCTDEGHVVLASPLKTGRKRHRHRGQHQQQAAGGSE
S
HPVPPTAPLTPLLHGEGASQQPRHRGQNRDAPQPYELNTA INCRDEVV SPLPSALQGSPGSL SAPPAA S
V
ISAPSSSSSRHRKRRRTSSKSEAGARGGGQSKEKGRGSWGRRHHHHP LPAAGFKKQQRKFQYGN YCK
Y
YYGYNPSCEDGRLRVLKPEWFRGRDVL DLGCVN GHLTL SIACKWGPSRMVGLDIDSR LIHSARQNI RHY
L
SEELRLPPQTEGDPGAEGEETT T VRKRSCFPASL TASRGPI AAPQVPLDGADTSVF PNNVVFVTGN Y
V
LDRDDLVEAQTPEYDVVLCLSLTKWVHLNWGDEGLKRMFRRIYRHLRPGGILVLEPQPSSY GKRKTL T
E
TIYKNYRIQLKPEQFSSYL TSPDVGFSSYELVATPHNTSKGFQRPVYLFHKARSPSH
    
```

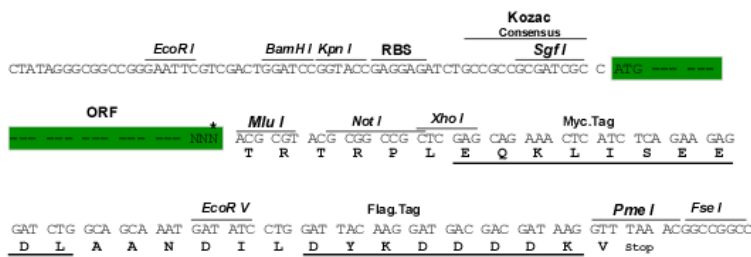
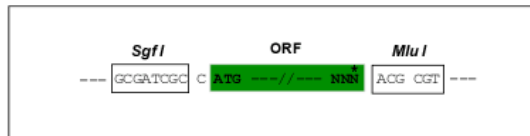
TRTRPLEQKLISEEDLAANDILDYKDDDDKV

**Chromatograms:** [https://cdn.origene.com/chromatograms/mk6261\\_a03.zip](https://cdn.origene.com/chromatograms/mk6261_a03.zip)

**Restriction Sites:** SgfI-MluI

**Cloning Scheme:**

Cloning sites used for ORF Shuttling:



\* The last codon before the Stop codon of the ORF

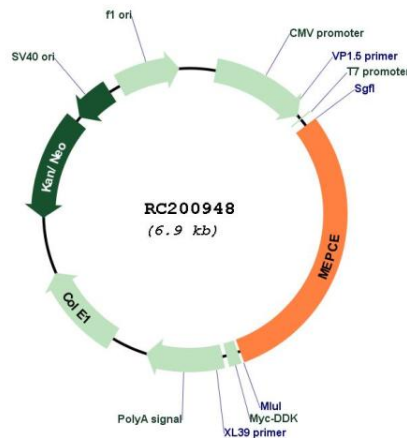
**ACCN:** NM\_019606

**ORF Size:** 2067 bp

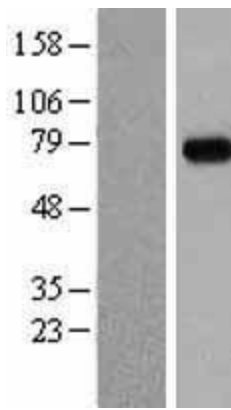
**OTI Disclaimer:** The molecular sequence of this clone aligns with the gene accession number as a point of reference only. However, individual transcript sequences of the same gene can differ through naturally occurring variations (e.g. polymorphisms), each with its own valid existence. This clone is substantially in agreement with the reference, but a complete review of all prevailing variants is recommended prior to use. [More info](#)

**OTI Annotation:** This clone was engineered to express the complete ORF with an expression tag. Expression varies depending on the nature of the gene.

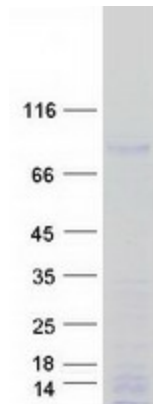
<b>Components:</b>	The ORF clone is ion-exchange column purified and shipped in a 2D barcoded Matrix tube containing 10ug of transfection-ready, dried plasmid DNA (reconstitute with 100 ul of water).
<b>Reconstitution Method:</b>	<ol style="list-style-type: none"> <li>1. Centrifuge at 5,000xg for 5min.</li> <li>2. Carefully open the tube and add 100ul of sterile water to dissolve the DNA.</li> <li>3. Close the tube and incubate for 10 minutes at room temperature.</li> <li>4. Briefly vortex the tube and then do a quick spin (less than 5000xg) to concentrate the liquid at the bottom.</li> <li>5. Store the suspended plasmid at -20°C. The DNA is stable for at least one year from date of shipping when stored at -20°C.</li> </ol>
<b>RefSeq:</b>	<a href="#">NM_019606.6</a>
<b>RefSeq Size:</b>	3047 bp
<b>RefSeq ORF:</b>	2070 bp
<b>Locus ID:</b>	56257
<b>UniProt ID:</b>	<a href="#">Q7L2J0</a>
<b>Cytogenetics:</b>	7q22.1
<b>Protein Families:</b>	Druggable Genome
<b>MW:</b>	74.4 kDa
<b>Gene Summary:</b>	S-adenosyl-L-methionine-dependent methyltransferase that adds a methylphosphate cap at the 5'-end of 7SK snRNA, leading to stabilize it.[UniProtKB/Swiss-Prot Function]

**Product images:**


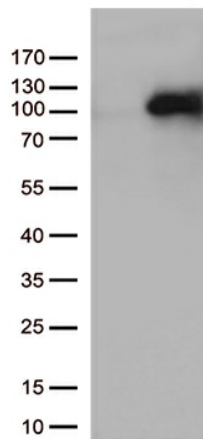
Circular map for RC200948



Western blot validation of overexpression lysate (Cat# [LY412732]) using anti-DDK antibody (Cat# [TA50011-100]). Left: Cell lysates from untransfected HEK293T cells; Right: Cell lysates from HEK293T cells transfected with RC200948 using transfection reagent MegaTran 2.0 (Cat# [TT210002]).



Coomassie blue staining of purified MEPCE protein (Cat# [TP300948]). The protein was produced from HEK293T cells transfected with MEPCE cDNA clone (Cat# RC200948) using MegaTran 2.0 (Cat# [TT210002]).



HEK293T cells were transfected with the pCMV6-ENTRY control (Cat# [PS100001], Left lane) or pCMV6-ENTRY MEPCE (Cat# RC200948, Right lane) cDNA for 48 hrs and lysed. Equivalent amounts of cell lysates (5 ug per lane) were separated by SDS-PAGE and immunoblotted with anti-MEPCE (Cat# [TA813128])(1:500).