

## Product datasheet for **RC200946**

### ISG20L2 (NM\_030980) Human Tagged ORF Clone

#### Product data:

Product Type:	Expression Plasmids
Product Name:	ISG20L2 (NM_030980) Human Tagged ORF Clone
Tag:	Myc-DDK
Symbol:	ISG20L2
Synonyms:	FLJ12671
Mammalian Cell Selection:	Neomycin
Vector:	pCMV6-Entry (PS100001)
E. coli Selection:	Kanamycin (25 ug/mL)
ORF Nucleotide Sequence:	>RC200946 ORF sequence Red=Cloning site Blue=ORF Green=Tags(s)

TTTTGTAATACGACTCACTATAGGGCGCCGGGAATTCGTCGACTGGATCCGGTACCGAGGAGATCTGCC  
GCC**CGGATCGCC**

ATGCTACTTTACTGCTCAATCTGGATTTGGGAACTCCTCCAAAAAGGCATTAGAAGGAAATGCCA  
AGCACCAGAAATTTGTCAAGAAGCGGAGGCTCTTAGAACGGAGAGGCTTTCTGAGTAAAAAGAACCAACC  
CCCTAGCAAGGCGCTAAGTTGCACTCTGAACCTTCAAAGAAAGGGGAACTCCTACGGTCGATGGCACT  
TGAAGACCCCTTCCTTCCAAAAAAGAAGACAGCTGCTTCCAGCAATGGGTGAGACAGCCCTGGACA  
AGAAAGCTGCAGTGTCTGGTTGACCCCTGCCCTTCAAAAAAGGCTGATTCTGTTGCTGCTAAAGTAGA  
TTTGCTGGGGAGTTCCAGAGTGCCTTCCAAAGATCAATAGCCACCAACCCGCTCTCAGAAGAAGAGC  
TCCCAGAAGAAATCCTCTAAAAAGAACCATCCTCAGAAGATGCCCCACAGAAGTCCACCAAGCTCATT  
CAGAGAATAAATGCTCCGGAGCATCCCAGAAGTTGCCACGGAAGATGGTGGCAATTGACTGTGAGATGGT  
GGGCACAGGACCAAGGGGCATGTTAGTTCCTTGCTCGATGTAGCATTGTCAACTACAACGGAGATGTG  
CTTTATGACGAGTACATTCTCCCCCTGCCACATTGTGGACTACCGAACCGGTGGAGTGGTATCCGGA  
AGCAGCACATGGTGAATGCCACACCTTCAAGATTGCTCGAGGCCAGATCTTGAAGATACTCACAGGGAA  
GATAGTGGTGGGCATGCCATCCACAACGACTTCAAAGCCCTTCAGTACTTTCACCCCAAGTCCCTCACC  
CGTGACACCTCCCATATCCCCCCTCAACCGGAAGGCTGACTGCCCGGAGAATGCCACCATGTCTCTGA  
AGCATCTACCAAGAAGCTGCTAAACCGGATATCCAGGTTGGGAAGAGCGGACATTCTCTGTGGAAGA  
TGCCAGGCCACCATGGAGCTATATAAGTTGGTTGAAGTCGAGTGGGAAGAGCACCTAGCCCGAATCCC  
CCTACAGAC

**ACGCGT**ACGCGGCCGCTCGAGCAGAACTCATCTCAGAAGAGGATCTGGCAGCAATGATATCCTGGATT  
ACAAGGATGACGACGATAAGGTTAA



[View online »](#)

**Protein Sequence:** >RC200946 protein sequence  
Red=Cloning site Green=Tags(s)

MSTLLLNLDGEPKPKALEGNAKHRNFVKKRLLERRGFLSKKNQPPSKAPKLHSEPSKKGETPTVDGT  
 WKTPSPFKKTAASSNGSQPLDKKAAVSWLTPAPSKKADSVAAKVDLLGEFQSALPKINSHPTRSQKKS  
 SQKSSKKNHPQKNAPQNSTQAHSNKC SGASQKLPRKMVAIDCEMVGTGPKGHVSSLARCSIVNYNGDV  
 LYDEYILPPCHIVDYRTRWSGIRKQHMVNATPFKIARGQILKILTGKIVVGHAIHNDFKALQYFHPKSLT  
 RDTSHIPPLNRKADCPENATMSLKHLTKKLLNRDIQVKGSGHSSVEDAQATMELYKLVVEVEEHLARNP  
 PTD

TRTRPLEQKLISEEDLAANDILDYKDDDDKV

**Chromatograms:** [https://cdn.origene.com/chromatograms/mk6177\\_h05.zip](https://cdn.origene.com/chromatograms/mk6177_h05.zip)

**Restriction Sites:** SgfI-MluI

**Cloning Scheme:**



\* The last codon before the Stop codon of the ORF

**ACCN:** NM\_030980

**ORF Size:** 1059 bp

**OTI Disclaimer:** The molecular sequence of this clone aligns with the gene accession number as a point of reference only. However, individual transcript sequences of the same gene can differ through naturally occurring variations (e.g. polymorphisms), each with its own valid existence. This clone is substantially in agreement with the reference, but a complete review of all prevailing variants is recommended prior to use. [More info](#)

**OTI Annotation:** This clone was engineered to express the complete ORF with an expression tag. Expression varies depending on the nature of the gene.

**Components:** The ORF clone is ion-exchange column purified and shipped in a 2D barcoded Matrix tube containing 10ug of transfection-ready, dried plasmid DNA (reconstitute with 100 ul of water).

**Reconstitution Method:**

1. Centrifuge at 5,000xg for 5min.
2. Carefully open the tube and add 100ul of sterile water to dissolve the DNA.
3. Close the tube and incubate for 10 minutes at room temperature.
4. Briefly vortex the tube and then do a quick spin (less than 5000xg) to concentrate the liquid at the bottom.
5. Store the suspended plasmid at -20°C. The DNA is stable for at least one year from date of shipping when stored at -20°C.

**Note:** Plasmids are not sterile. For experiments where strict sterility is required, filtration with 0.22um filter is required.

**RefSeq:** [NM\\_030980.1](#), [NP\\_112242.1](#)

**RefSeq Size:** 2051 bp

**RefSeq ORF:** 1062 bp

**Locus ID:** 81875

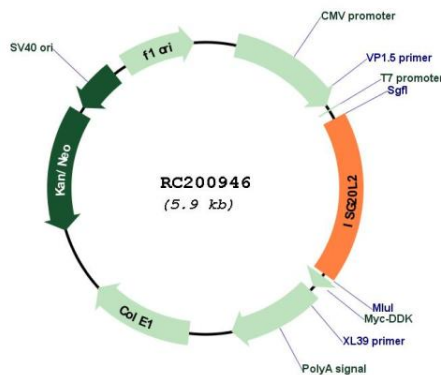
**Cytogenetics:** 1q23.1

**Domains:** EXOIII

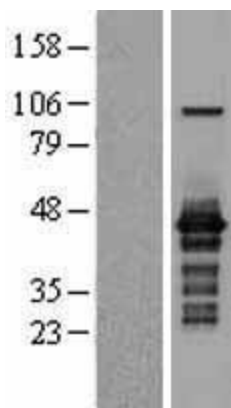
**MW:** 39.2 kDa

**Gene Summary:** This gene encodes a 3'-5' exoribonuclease that may be involved in the processing of the 12S pre-rRNA. Pseudogenes have been identified on chromosomes 6 and 11. [provided by RefSeq, Dec 2014]

### Product images:



Circular map for RC200946



Western blot validation of overexpression lysate (Cat# [LY403104]) using anti-DDK antibody (Cat# [TA50011-100]). Left: Cell lysates from untransfected HEK293T cells; Right: Cell lysates from HEK293T cells transfected with RC200946 using transfection reagent MegaTran 2.0 (Cat# [TT210002]).



Coomassie blue staining of purified ISG20L2 protein (Cat# [TP300946]). The protein was produced from HEK293T cells transfected with ISG20L2 cDNA clone (Cat# RC200946) using MegaTran 2.0 (Cat# [TT210002]).