

Product datasheet for RC200944

PAXX (NM_183241) Human Tagged ORF Clone

Product data:

Product Type: Expression Plasmids
 Product Name: PAXX (NM_183241) Human Tagged ORF Clone
 Tag: Myc-DDK
 Symbol: PAXX
 Synonyms: C9orf142; XLS
 Mammalian Cell Selection: Neomycin
 Vector: pCMV6-Entry (PS100001)
 E. coli Selection: Kanamycin (25 ug/mL)
 ORF Nucleotide Sequence: >RC200944 ORF sequence
 Red=Cloning site Blue=ORF Green=Tags(s)

TTTTGTAATACGACTCACTATAGGGCGGCCGGAATTCGTCGACTGGATCCGGTACCGAGGAGATCTGCC
 GCC**CGATCGCC**

ATGGATCCGCTGTCGCCCGCTCTGCACGCTGCCCGGGCCCCGAGCCGCCCGCTTCGTGTGCTACT
 GCGAAGGGGAGGAAAGCGGGGAGGGGACCGCGCGGCTTCAACCTCTACGTGACCGACGCCGGGAGCT
 TTGGAGCACCTGCTTACGCCGACAGCCTGGCGGCCCTCAAAGCCGTTTTGGCCTGAGTGC GGCTGAG
 GACATCACCCCGGTTCAAGGCAGCCTGTGAGCAGCAAGCTGTGGCTCTGACTCTGCAGGAGGACAGAG
 CATCCCTGACGCTTTCAGGGGGCCCTCGGCACTGGCCTTTGACCTCTCCAAGGTACCAGGCCAGAGGC
 AGCCCCAGGCTGCGGGGCTGACACTGGCCTGGCAAAACGCGTGTGGAGCCTGGAGCGGCGACTGGCA
 GCTGCAGAAGAGACAGCTGTAGCCGAGGAAGAGCCCCCGCCTGCAGGGCCTCAGCTCTTCTTACCAG
 ACCCAGATCCCCAGAGAGGTGGCCCTGGACTGGAGTCAGGAGCGGTGTCCAGGAGAGTCGCTCATCAA
 CCCC GGTTCAAGAGTAAGAAACCAGCTGGTGGCTGGACTTCGATGAGACC

AG**CGGACCG**ACGCGTACGCGCCGCTCGAGCAGAACTCATCTCAGAAGAGGATCTGGCAGCAAATGATATCC
 TGGATTACAAGGATGACGACGATAAGGTTTAA

Protein Sequence: >RC200944 protein sequence
 Red=Cloning site Green=Tags(s)

MDPLSPPLCTLPPGPEPPRFVICYEGEESGEGDRGGFNLVYTDAAELWSTCFTPDLSAALKARFGLSAAE
 DITPRFRAACEQQAVALTLQEDRASLTLSGGPSALAFDL SKVPGPEAAPRLRALTLGLAKRVWLSLERRLA
 AAETAVSPRKSPPRAGPQLFLPDPDPRGGPGVRRRCPEGESLINPGFKSKKPAGGVDFDET

SGPTRTRPLEQKLI SEEDLAANDILDYKDDDDKV

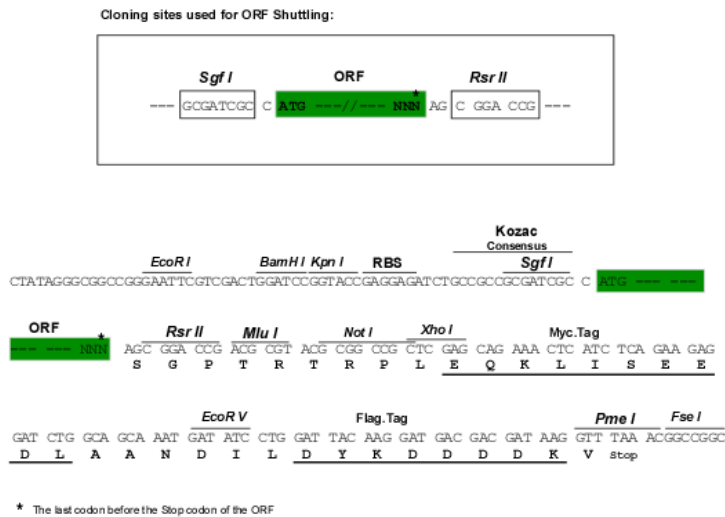


[View online »](#)

Chromatograms: https://cdn.origene.com/chromatograms/mk6615_b07.zip

Restriction Sites: SgfI-RsrII

Cloning Scheme:



ACCN: NM_183241

ORF Size: 612 bp

OTI Disclaimer: The molecular sequence of this clone aligns with the gene accession number as a point of reference only. However, individual transcript sequences of the same gene can differ through naturally occurring variations (e.g. polymorphisms), each with its own valid existence. This clone is substantially in agreement with the reference, but a complete review of all prevailing variants is recommended prior to use. [More info](#)

OTI Annotation: This clone was engineered to express the complete ORF with an expression tag. Expression varies depending on the nature of the gene.

Components: The ORF clone is ion-exchange column purified and shipped in a 2D barcoded Matrix tube containing 10ug of transfection-ready, dried plasmid DNA (reconstitute with 100 ul of water).

- Reconstitution Method:**
1. Centrifuge at 5,000xg for 5min.
 2. Carefully open the tube and add 100ul of sterile water to dissolve the DNA.
 3. Close the tube and incubate for 10 minutes at room temperature.
 4. Briefly vortex the tube and then do a quick spin (less than 5000xg) to concentrate the liquid at the bottom.
 5. Store the suspended plasmid at -20°C. The DNA is stable for at least one year from date of shipping when stored at -20°C.

Note: Plasmids are not sterile. For experiments where strict sterility is required, filtration with 0.22um filter is required.

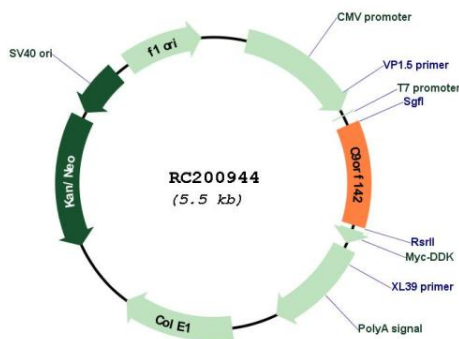
RefSeq: [NM_183241.3](#)

RefSeq Size: 851 bp

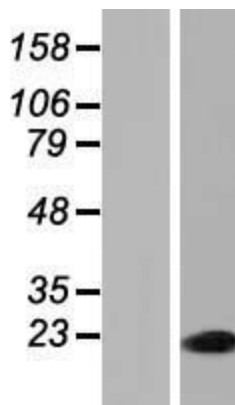
RefSeq ORF: 615 bp
 Locus ID: 286257
 UniProt ID: [Q9BUH6](#)
 Cytogenetics: 9q34.3
 MW: 21.6 kDa

Gene Summary: The protein encoded by this gene plays a role in the nonhomologous end joining (NHEJ) pathway of DNA double-strand break repair. The encoded protein may function to stabilize the Ku70/Ku80 heterodimer to facilitate the assembly and maintain the stability of the NHEJ complex. [provided by RefSeq, Jul 2016]

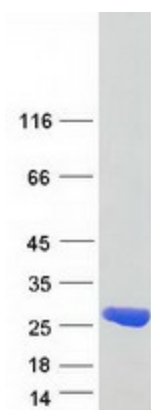
Product images:



Circular map for RC200944



Western blot validation of overexpression lysate (Cat# [LY405236]) using anti-DDK antibody (Cat# [TA50011-100]). Left: Cell lysates from untransfected HEK293T cells; Right: Cell lysates from HEK293T cells transfected with RC200944 using transfection reagent MegaTran 2.0 (Cat# [TT210002]).



Coomassie blue staining of purified PAXX protein (Cat# [TP300944]). The protein was produced from HEK293T cells transfected with PAXX cDNA clone (Cat# RC200944) using MegaTran 2.0 (Cat# [TT210002]).