

Product datasheet for **RC200941**

FKRP (NM_024301) Human Tagged ORF Clone

Product data:

Product Type:	Expression Plasmids
Product Name:	FKRP (NM_024301) Human Tagged ORF Clone
Tag:	Myc-DDK
Symbol:	FKRP
Synonyms:	FKTR; LGMD2I; LGMDR9; MDC1C; MDDGA5; MDDGB5; MDDGC5
Mammalian Cell Selection:	Neomycin
Vector:	pCMV6-Entry (PS100001)
E. coli Selection:	Kanamycin (25 ug/mL)



[View online »](#)

ORF Nucleotide Sequence:

>RC200941 ORF sequence
 Red=Cloning site Blue=ORF Green=Tags(s)

TTTTGTAATACGACTCACTATAGGGCGGCCGGGAATTCGTCGACTGGATCCGGTACCGAGGAGATCTGCC
 GCC**CGGATCGCC**

ATGCGGCTCACCCGCTGCCAGGCTGCCCTGGCGGCCGCCATCACCTCAACCTTCTGGTCTCTTCTATG
 TCTCGTGGCTGCAGCACCAGCCTAGGAATTCCTGGGCCCGGGGGCCCGTCTGCTGCGCCGCGCC
 CCGTGTACCCGCTCCTGGTGCAGGAGTTCGAGGCATTTGACAACGCGGTGCCCGAGCTGGTAGACTCCTTC
 CTGCAGCAAGACCCAGCCAGCCGCTGGTGGTGGCAGCCGACACGCTCCCTACCCGCCCTGGCCCTGC
 CCCGCATCCCAACGTGCGTCTGGCGTCTCCAGCCGCCCTGGACCGCCAGCCGAGCCTCGCGCC
 GGAGACCTACGTGGCCACCGAGTTTGTGGCCCTAGTACCTGATGGGGCGCGGGCTGAGGCACCTGGCCTG
 CTGGAGCGCATGGTGGAGGCGCTCCGCGCAGGAAGCGCACGTCTGGTGGCCGCCCGGTTGCCACGGCCA
 ACCCTGCCAGGTGCTGGCCCTGAACGTACGCTGCGAGAGTGGACCGCCGCTATGGCGCAGCCCGCCG
 CGCGCCCGCTGCGACGCCCTGGACGGAGATGCTGTGGTCTCTGCGCGCCCGGACCTTTCAACCTC
 TCGGCGCCCTGGCCCGCGGTGGGCACCGCCTCTTTCTGCAGACCGCCCTTCGCGGGTGGGCGGTGC
 AGCTGCTGGACTTGACCTTCGCCGCGGCCGCCAGCCCCGCTGGCCACGGCCACGCGCGCTGGAAGGC
 TGAGCGCAGGGACGCGCTCGCGGGCGCGCTGCTCCGCGCGTGGCATCCGCTAGTGAGCTGGGAA
 GGCGGGCGGCTGGAGTGGTTCCGCTGCAACAAGGAGACCAGCGCTGCTTCGGAACCGTGGTGGCGACA
 CGCCCGCTACCTCTACGAGGAGCGTGGACGCCCCCTGCTGCTGCGCGCGTGCAGGAGACCGCCCG
 CTATGTGGTGGCGTCTGGAGGCTGCGGGCGTGCCTACTGGCTCGAGGGCGGCTACTGCTGGGGCC
 GCCCGCCACGGGGACATCATCCATGGGACTACGACGTGGACCTGGGCATCTACTGGAGGACGTGGGCA
 ACTGCGAGCAGTGCAGGGGGCAGAGCCGGCTCGGTGGTGGATGAGCGCGGCTTCGATGGGAGAAGGC
 GGTCGAGGGCGACTTTTCCGCGTGCAGTACAGCGAAAGCAACCACTTGCACGTGGACCTGTGGCCCTTC
 TACCCCGCAATGGCGTATGACCAAGGACACGTGGTGGACCACCGGCAGGATGTGGAGTTTCCGAGC
 ACTTCTGCAGCCGCTGGTGGCCCTGCCCTTTCGCGGCTTCGTGGCGCAGGCGCCTAACAACTACCGCCG
 CTTCTGGAGCTCAAGTTCGGGCCCGGGTTCATCGAGAACCCCAAGTACCCCAACCCGGCACTGCTGAGT
 CTGACGGGAAGCGGC

ACGCGTACGCGGCCGCTCGAGCAGAACTCATCTCAGAAGAGGATCTGGCAGCAAATGATATCTGGATT
 ACAAGGATGACGACGATAAGGTTTAA

Protein Sequence:

>RC200941 protein sequence
 Red=Cloning site Green=Tags(s)

MRLTRCQAALAAAITLNLVLFYVSWLQHQPNSRARGPRRASAAGPRVTVLVREFEAFDNAVPELVDSF
 LQQDPAQPVVVAADTLPPPLALPRIPNVRLLQPALDRPAAASRPETYVATEFVALVPDGARAEAPGL
 LERMVEALRAGSARLVAAPVATANPARCLALNVSLREWTARYGAAPAAPRCDALDGDVAVLLRARDLFNL
 SAPLARPVGTSFLQALRGWAVQLLDLTFAAARQPPLATAHARWKAEREGRARRAALLRALGIRLVSWE
 GGRLEWFGCNKETTRCFGTVVGDTPAYLYEERWTPPCCLRALRETARYVVGVEAAGVRYWLEGGSLIGA
 ARHGDIIIPWDYVDLGIYLEDVGNCEQLRGAEAGSVVDERGFVWEKAVEGDFFRVQYSES NHLHVDLWPF
 YPRNGVMTKDTWLDHRQDVEFPEHFLQPLVPLPFAGFVAQAPNNYRRFLELKFPGVVIENPQYPNPALLS
 LTGSG

TRTRPLEQKLISEEDLAANDILDYKDDDDKV

Chromatograms:

https://cdn.origene.com/chromatograms/mk6217_c05.zip

Restriction Sites:

Sgfl-Mlul

Cloning Scheme:


ACCN: NM_024301

ORF Size: 1485 bp

OTI Disclaimer: The molecular sequence of this clone aligns with the gene accession number as a point of reference only. However, individual transcript sequences of the same gene can differ through naturally occurring variations (e.g. polymorphisms), each with its own valid existence. This clone is substantially in agreement with the reference, but a complete review of all prevailing variants is recommended prior to use. [More info](#)

OTI Annotation: This clone was engineered to express the complete ORF with an expression tag. Expression varies depending on the nature of the gene.

Components: The ORF clone is ion-exchange column purified and shipped in a 2D barcoded Matrix tube containing 10ug of transfection-ready, dried plasmid DNA (reconstitute with 100 ul of water).

- Reconstitution Method:**
1. Centrifuge at 5,000xg for 5min.
 2. Carefully open the tube and add 100ul of sterile water to dissolve the DNA.
 3. Close the tube and incubate for 10 minutes at room temperature.
 4. Briefly vortex the tube and then do a quick spin (less than 5000xg) to concentrate the liquid at the bottom.
 5. Store the suspended plasmid at -20°C. The DNA is stable for at least one year from date of shipping when stored at -20°C.

Note: Plasmids are not sterile. For experiments where strict sterility is required, filtration with 0.22um filter is required.

RefSeq: [NM_024301.5](#)

RefSeq Size: 3422 bp

RefSeq ORF: 1488 bp

Locus ID: 79147

UniProt ID: [Q9H9S5](#)

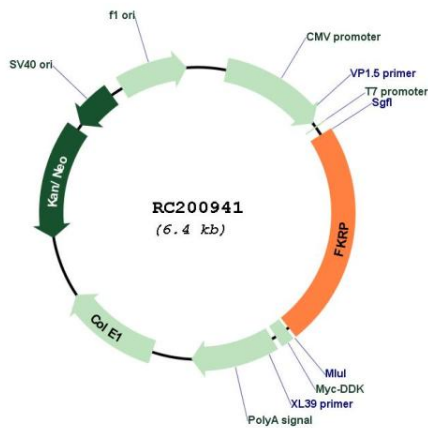
Cytogenetics: 19q13.32

Protein Families: Transmembrane

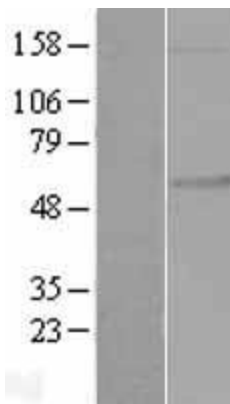
MW: 54.6 kDa

Gene Summary: This gene encodes a protein which is targeted to the medial Golgi apparatus and is necessary for posttranslational modification of dystroglycan. Mutations in this gene have been associated with congenital muscular dystrophy, cognitive disability, and cerebellar cysts. Several alternatively spliced transcript variants of this gene have been described, but the full-length nature of some of these variants has not been determined. [provided by RefSeq, Oct 2008]

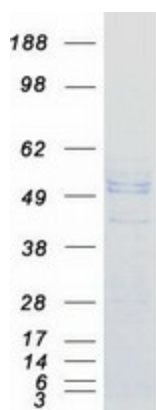
Product images:



Circular map for RC200941



Western blot validation of overexpression lysate (Cat# [LY421845]) using anti-DDK antibody (Cat# [TA50011-100]). Left: Cell lysates from untransfected HEK293T cells; Right: Cell lysates from HEK293T cells transfected with [RC222259] using transfection reagent MegaTran 2.0 (Cat# [TT210002]).



Coomassie blue staining of purified FKRP protein (Cat# [TP300941]). The protein was produced from HEK293T cells transfected with FKRP cDNA clone (Cat# RC200941) using MegaTran 2.0 (Cat# [TT210002]).