

Product datasheet for **RC200937**

CCDC120 (NM_033626) Human Tagged ORF Clone

Product data:

Product Type:	Expression Plasmids
Product Name:	CCDC120 (NM_033626) Human Tagged ORF Clone
Tag:	Myc-DDK
Symbol:	CCDC120
Synonyms:	JM11
Mammalian Cell Selection:	Neomycin
Vector:	pCMV6-Entry (PS100001)
E. coli Selection:	Kanamycin (25 ug/mL)



[View online »](#)

ORF Nucleotide Sequence:

>RC200937 representing NM_033626
 Red=Cloning site Blue=ORF Green=Tags(s)

TTTTGTAATACGACTCACTATAGGGCGGCCGGAATTCGTCGACTGGATCCGGTACCGAGGAGATCTGCC
 GCC**GCGATCGCC**

ATGGAAGTCAAAGGTCAGCTGATCAGCTCTCTACCTCAATGCCCCAGCTGCCCTGTTCCGAGAGGCTG
 CCCCCAGGTGAAGTCAGAGCGTCTGCGGGGCTGCTTGACCGCAGCGACCCTGCAGGAGGCCCTGAG
 CCTGAAACTTCAGGAGCTCCGCAAAGTGTGTCTCCAGGAGCGGAGCTGACTGGCCAGCTGCCCCCTGAG
 TGCCCACTAGAGCCTGGTGAACGGCCCCAGTTGGTCCGCCGGCGGCCCCACAGCCCGCCTACCCTC
 CACCGACCCCAACCAAGCACACCCTCTGTGCCCTGCTGAGGAGCTGGCTCTTGAGGCCCTGGAACG
 CGAGGTGTCAGTGAACAGCAGATCGCGCGGCCCGCCCGCCCTGGCCCTGGCCCTGATCTGAGCACC
 GAGCAGCGCCGGCGCCGGCGCCAGGTCCAGGCAGATGACTGAGGAGGCTGCATGAGCTAGAGGAGCAGC
 TCAGGGATGTCCGGGCCCGCCTTGGCCTCCAGTGTCCCGCTGCCCCAGCCACTGCCACTGTCCACGGG
 GTCAGTGATCACCAACAGGGAGTCTGCCTGGGCATGCGTCTTGCTCAGCTCAGCCAAGAGGACGTAGTT
 CTGCACTCAGAGAGCAGCTCCCTCTCAGAGTCTGGGGCCAGCCATGACAACGAGGAGCCCATGGCTGCT
 TCTCTCTGGCCGAGCGCCCTCACCAACCAAGGCTTGGGACCAGCTGCGGCGAGTATCTGGGGGAGCCC
 TGAGCGCGCAACCCATGGAAACCACTCCATCAGATCTTTATGGGGATCTGAAGAGCCGGCGAACTCT
 GTGGCCAGCCCCACAGCCCCACAGCTCGCTGCCAGGAGTGCCTCCAGTTTTGAGGGCGAAGTGTGC
 CTGCCACCCCTGTCTCACCCGGGGCGCTGGCCCCAGCTCTGCAAACCTGAAGGCCCTCATTCTCGTCA
 GTGGTCCGGCAGCCAGGACTCCCAGATGGGCTTCCCCGGGGGACCCTGCCTCCGATCGCGCTCCCTC
 TTCGTAGCTCGCACCCCGCCAGCAACAGTTCTGAGGCCCTGCTGGTGGACCGGGCCGCTGGTGGGGGAG
 CTGGCTCCCCGCCTGCCCTCTGGCTCCCTCTGCCTCTGGCCCCCAGTCTGCAAGAGCAGTGGGTGCT
 GTATGAGCGCCCCAACCAACCCCTGCCTTCTCTCCCGCAGCAGGCCCCCAGACCCTCCCCGGGCC
 GCCCGGCTAGCTCAGCTGCCCTGCCTCCCGAGGTGCCCCCGGCTCCCACCTGTGTGGAGACTTCC
 TCTTGGACTATTCTTGGACCGGGGCTGCCCGCAGTGGCGGTGGAACAGGCTGGGGGAGCTGCCGCC
 TGCAGCTGAGGTCCAGGACCCCTCTCCCGCGGGATGGGCTCCTCACCATGCTCCCGGCCACCACCT
 GTGTATGCAGCTGACAGCAACAGCCCCCTCTCCGCACCAAGGACCCCCACACCCGTGCCACCCGACTA
 AGCCCTGTGGCTGCCCCAGAGGCTGCCGAAGGCCCTGAGGTGCATCAAACCCCTCTGCTGTGGATGCC
 CCCACCCACCCGATCCCTCGGCTGGTGAACGCAGTGGCCACAAGAACCCTGGCTCTGGAGGGGCTCGGG
 GACTGGTACATCCGGAACCTGGGACTGGCTGCGGGGCCAGCGCCGGCCTGTGCTCCCTCCGTGGGCC
 CGCCACACCCACCCCTTCTCCATGCCCGCTGCTATGAGGTGGGCCAGGCGCTGTACGGGGCCCCAGCCA
 GCGCCACTCCACACTCGAGGAGTTTACGGCGCCCCCTGTCTCTGGCAGGTATGGGGGTGCTTTTAC

ACGCGTACGCGGCCGCTCGAGCAGAACTCATCTCAGAAGAGGATCTGGCAGCAAATGATATCCTGGATT
 ACAAGGATGACGACGATAAGGTTTAA

Protein Sequence:

>RC200937 representing NM_033626
 Red=Cloning site Green=Tags(s)

MEVKGQLISSPTFNAPAALFGEAAPQVKSERLRGLLDRQRTLQEALSLKLQELRKVCLQEALTGQLPPE
 CPLEPGERPQLVRRRPPPTARAYPPHPNQAHSLCPAEELALEALEREVSVQQQIAAAARRLALAPDLST
 EQRRRRRQVQADALRRLHELEQLRDVRLGLPVLPLPQPLPLSTGSVITTTQGVCLGMRLAQLSQEDVV
 LHSESSSLSESGASHDNEEPHGCFSLAERPSPPKAWDQLRAVSGGSPERRTPWKPPPSDLYGDLKSRNS
 VASPTSPTRSLPRSASSFEGRSVPATPVLTRGAGPQLCKPEGLHSRQWSGSQDSQMGFPRADPASDRASL
 FVARTRRSNSSEALLVDRAAGGGAGSPPAPLAPSASGPPVCKSSEVLYERPQPTAFSSRTAGPPDPPRA
 ARPSSAAPASRGAPRLPPVCGDFLLDYSLDRGLPRSGGTGWGELPPAAEVPGPLSRRDGLLTMLPGPPP
 VYAADNSPLLRKDPHTRATRTKPCGLPPEAAEGPEVHPNPLLWMPPTTRIPSAGERSGHKNLALEGLR
 DWYIRNSGLAAGPQRRPVLPSVGPPHPPFLHARCYEVGQALYGAPSQAPLPHSRSFAPPVSGRYGGCFY

TRTRPLEQKLISEEDLAANDILDYKDDDDKV

Chromatograms: https://cdn.origene.com/chromatograms/mg4201_f08.zip

Restriction Sites: SgfI-MluI

Cloning Scheme:



ACCN: NM_033626

ORF Size: 1890 bp

OTI Disclaimer: The molecular sequence of this clone aligns with the gene accession number as a point of reference only. However, individual transcript sequences of the same gene can differ through naturally occurring variations (e.g. polymorphisms), each with its own valid existence. This clone is substantially in agreement with the reference, but a complete review of all prevailing variants is recommended prior to use. [More info](#)

OTI Annotation: This clone was engineered to express the complete ORF with an expression tag. Expression varies depending on the nature of the gene.

Components: The ORF clone is ion-exchange column purified and shipped in a 2D barcoded Matrix tube containing 10ug of transfection-ready, dried plasmid DNA (reconstitute with 100 ul of water).

Reconstitution Method:

1. Centrifuge at 5,000xg for 5min.
2. Carefully open the tube and add 100ul of sterile water to dissolve the DNA.
3. Close the tube and incubate for 10 minutes at room temperature.
4. Briefly vortex the tube and then do a quick spin (less than 5000xg) to concentrate the liquid at the bottom.
5. Store the suspended plasmid at -20°C. The DNA is stable for at least one year from date of shipping when stored at -20°C.

Note: Plasmids are not sterile. For experiments where strict sterility is required, filtration with 0.22um filter is required.

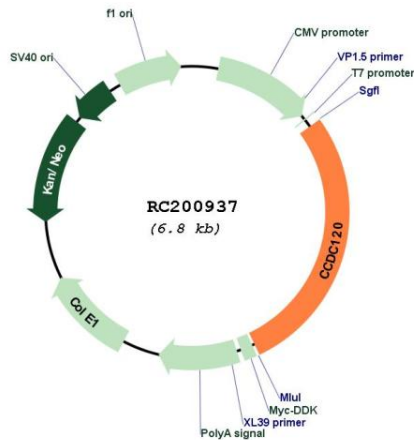
RefSeq: [NM_033626.3](#)

RefSeq Size: 4004 bp

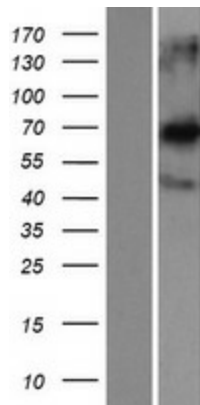
RefSeq ORF: 1893 bp
 Locus ID: 90060
 UniProt ID: [Q96HB5](#)
 Cytogenetics: Xp11.23
 MW: 67.4 kDa

Gene Summary: This gene encodes a protein that contains a coiled-coil domain. Several alternatively spliced transcript variants encoding multiple isoforms have been found for this gene. [provided by RefSeq, Nov 2012]

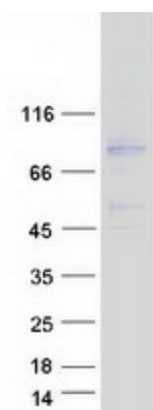
Product images:



Circular map for RC200937



Western blot validation of overexpression lysate (Cat# [LY409489]) using anti-DDK antibody (Cat# [TA50011-100]). Left: Cell lysates from un-transfected HEK293T cells; Right: Cell lysates from HEK293T cells transfected with RC200937 using transfection reagent MegaTran 2.0 (Cat# [TT210002]).



Coomassie blue staining of purified CCDC120 protein (Cat# [TP300937]). The protein was produced from HEK293T cells transfected with CCDC120 cDNA clone (Cat# RC200937) using MegaTran 2.0 (Cat# [TT210002]).