

Product datasheet for **RC200936**

NUDT21 (NM_007006) Human Tagged ORF Clone

Product data:

Product Type:	Expression Plasmids
Product Name:	NUDT21 (NM_007006) Human Tagged ORF Clone
Tag:	Myc-DDK
Symbol:	NUDT21
Synonyms:	CFIM25; CPSF5
Mammalian Cell Selection:	Neomycin
Vector:	pCMV6-Entry (PS100001)
E. coli Selection:	Kanamycin (25 ug/mL)
ORF Nucleotide Sequence:	>RC200936 ORF sequence Red=Cloning site Blue=ORF Green=Tags(s)

TTTTGTAATACGACTCACTATAGGGCGCCGGGAATTCGTCGACTGGATCCGGTACCGAGGAGATCTGCC
GCC**CGATCGCC**

ATGTCTGTGGTACCGCCAATCGCTCGCAGACCGGCTGGCCCCGGGGGTCCTCAGTTCGGCAACAAGT
ACATCCAGCAGACGAAGCCCTCACCTGGAGCGCACCATCAACCTGTACCCTTTACCAATTATACTTT
TGGTACAAAAGAGCCCTCTACGAGAAGGACAGCTCTGTTGCAGCCAGATTTAGCGCATGAGGGAAGAA
TTTGATAAAATTGGAATGAGGAGGACTGTAGAAGGGTTCTGATTGTACATGAGCACCGGCTACCCCATG
TGTTACTGCTGCAGCTGGGAACAACCTTTCTCAAACCTACCTGGTGGTGAACCTAACCAGGAGAAGATGA
AGTTGAAGGACTAAAACGCTTAATGACAGAGATACTGGGTCGTCAGGATGGAGTTTTGCAAGACTGGGTC
ATTGACGATTGCATTGGTAACTGGTGGAGACCAATTTTGAACCTCCTCAGTATCCATATATTCCTGCAC
ATATTACAAAGCCTAAGGAACATAAGAAGTTGTTTCTGGTTCAGCTTCAAGAAAAAGCCTTGTTCAGT
CCCTAAAATTACAAGCTGGTAGCTGCACCATTGTTTGAATTGTATGACAATGCACCAGGATATGGACCC
ATCATTCTAGTCTCCCTCAGCTGTTGAGCAGGTTCAATTTTATTACAAC

ACGCGTACGCGGGCGCTCGAGCAGAACTCATCTCAGAAGAGGATCTGGCAGCAATGATATCCTGGATT
ACAAGGATGACGACGATAAGGTTTAA



[View online »](#)

Protein Sequence: >RC200936 protein sequence
Red=Cloning site Green=Tags(s)

MSVVPNRSQTGWPRGVTQFGNKYIQQTKPLTLERTINLYPLTNYTFGTKEPLYEKDSSVAARFQRMREE
 FDKIGMRRTVEGLIVHEHRLPHVLLLQLGTTFFKLPGGELNPGEDEVEGLKRLMTEILGRQDGVLDWV
 IDDCIGNWWRPNFEPQYPYIPAHITKPKKEHKKLFLVQLQEKALFAVPKNYKLVAAFLFELYDNAPGYGP
 IISLPLQLLSRFNFIYN

TRTRPLEQKLISEEDLAANDILDYKDDDDKV

Chromatograms: https://cdn.origene.com/chromatograms/mk6386_g12.zip

Restriction Sites: SgfI-MluI

Cloning Scheme:

Cloning sites used for ORF Shuttling:



ACCN: NM_007006

ORF Size: 681 bp

OTI Disclaimer: The molecular sequence of this clone aligns with the gene accession number as a point of reference only. However, individual transcript sequences of the same gene can differ through naturally occurring variations (e.g. polymorphisms), each with its own valid existence. This clone is substantially in agreement with the reference, but a complete review of all prevailing variants is recommended prior to use. [More info](#)

OTI Annotation: This clone was engineered to express the complete ORF with an expression tag. Expression varies depending on the nature of the gene.

Components: The ORF clone is ion-exchange column purified and shipped in a 2D barcoded Matrix tube containing 10ug of transfection-ready, dried plasmid DNA (reconstitute with 100 ul of water).

Reconstitution Method:

1. Centrifuge at 5,000xg for 5min.
2. Carefully open the tube and add 100ul of sterile water to dissolve the DNA.
3. Close the tube and incubate for 10 minutes at room temperature.
4. Briefly vortex the tube and then do a quick spin (less than 5000xg) to concentrate the liquid at the bottom.
5. Store the suspended plasmid at -20°C. The DNA is stable for at least one year from date of shipping when stored at -20°C.

Note: Plasmids are not sterile. For experiments where strict sterility is required, filtration with 0.22um filter is required.

RefSeq: [NM_007006.3](#)

RefSeq Size: 4407 bp

RefSeq ORF: 684 bp

Locus ID: 11051

UniProt ID: [O43809](#)

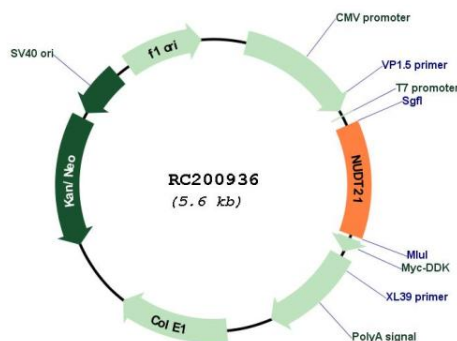
Cytogenetics: 16q13

Domains: NUDIX

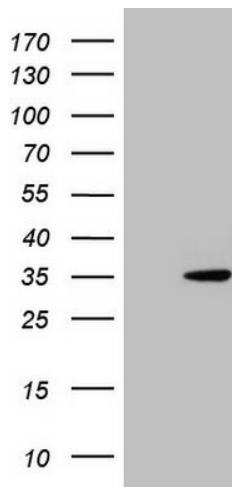
MW: 26.2 kDa

Gene Summary: The protein encoded by this gene is one subunit of a cleavage factor required for 3' RNA cleavage and polyadenylation processing. The interaction of the protein with the RNA is one of the earliest steps in the assembly of the 3' end processing complex and facilitates the recruitment of other processing factors. This gene encodes the 25kD subunit of the protein complex, which is composed of four polypeptides. [provided by RefSeq, Jul 2008]

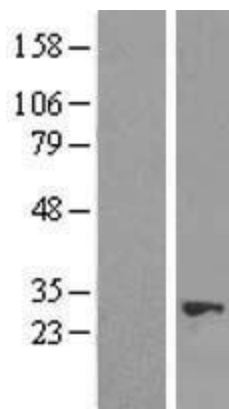
Product images:



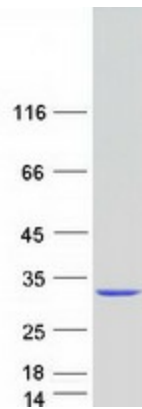
Circular map for RC200936



HEK293T cells were transfected with the pCMV6-ENTRY control (Cat# [PS100001], Left lane) or pCMV6-ENTRY NUDT21 (Cat# RC200936, Right lane) cDNA for 48 hrs and lysed. Equivalent amounts of cell lysates (5 ug per lane) were separated by SDS-PAGE and immunoblotted with anti-NUDT21 (Cat# [TA806779])(1:2000). Positive lysates [LY416262] (100ug) and [LC416262] (20ug) can be purchased separately from OriGene.



Western blot validation of overexpression lysate (Cat# [LY416262]) using anti-DDK antibody (Cat# [TA50011-100]). Left: Cell lysates from untransfected HEK293T cells; Right: Cell lysates from HEK293T cells transfected with RC200936 using transfection reagent MegaTran 2.0 (Cat# [TT210002]).



Coomassie blue staining of purified NUDT21 protein (Cat# [TP300936]). The protein was produced from HEK293T cells transfected with NUDT21 cDNA clone (Cat# RC200936) using MegaTran 2.0 (Cat# [TT210002]).