

## Product datasheet for **RC200931**

### PHF23 (NM\_024297) Human Tagged ORF Clone

#### Product data:

Product Type:	Expression Plasmids
Product Name:	PHF23 (NM_024297) Human Tagged ORF Clone
Tag:	Myc-DDK
Symbol:	PHF23
Synonyms:	hJUNE-1b
Mammalian Cell Selection:	Neomycin
Vector:	pCMV6-Entry (PS100001)
E. coli Selection:	Kanamycin (25 ug/mL)
ORF Nucleotide Sequence:	>RC200931 ORF sequence Red=Cloning site Blue=ORF Green=Tags(s)

TTTTGTAATACGACTCACTATAGGGCGGCCGGAATTCGTCGACTGGATCCGGTACCGAGGAGATCTGCC  
GCC**CGATCGCC**

ATGCTGGAAGCCATGGCGGAGCCAGTCCCAGATCCACCTCCGACCCTTAAGCCAGAGACTCAGCCAC  
CAGAGAAACGGCGGAGAACAATTGAGGATTTCAACAAATCTGCAGTTTTGTTTTGGCATATGCTGGTTA  
CATTCCCCCTAGCAAAGAGGAAAGTGACTGGCCAGCCTCTGGCTCCAGCTCTCCATTGCGAGGAGAGAGT  
GCGGCCGACAGTGATGGCTGGGACTCGGCCCTCAGATCTTGAACCATCCAGACTTTTGTAAAGAAAG  
CAAAGTCATCCAAGAGAAGGGCAGCTCAAGCAGTCCCACCCAGCCAGGACCCCAAGGTCCACTTTCTC  
TCGTCTGCAGGCCCCGACAGTGCTACCTTGCTTGAGAAGATGAAGCTCAAGGACTCTCTTTGATCTG  
GATGGGCCCAAAGTGGCATCTCCTTTGTCCCCACATCCCTGACACATACCTCCCGGCCCTTGCTGCTC  
TTACCCCGTGCCCTTTCCAGGGGACCTCTCCCATCCTCCTCGAAAGAAGGACCGAAAGAACCAGAAA  
GTTGGGGCCAGGAGCTGGGGTGGCTTTGGGGTCTTCGGAGGCCTCGGCCAACTCCTGGGGATGGGGAA  
AAGAGATCTCGAATCAAGAAGAGCAAGAAGCGGAAGTTAAAAAGGCAGAACGGGGGATAGACTCCCAC  
CTCCTGGGCTCCCAGGCACCCCAAGTACAGACTCTGAAGAGGAGGAGGAAGAGGAGGAAGAGGA  
AGAAGAAGAAGAGATGGCAACAGTGGTAGGGGTGAAGCCCCAGTCCCTGTGCTGCCAACCCCCCTGAG  
GCTCCTAGGCCCTGCCACAGTGCACCCTGAAGGAGTCCCTCCTGCTGACAGTGAAGCAAGGAGGTGG  
GCAGACTGAAACAAGCCAAGATGGAGATGCCAGCTCCAGTGAAGGCGAGATGCGGGTCAATGGACGAGGA  
CATCATGGTAGAATCAGGTGATGACTCATGGGATCTGATCACATGTTACTGTGCAAAAGCCCTTTGACGGG  
CGGCCATGATTGAGTGCAGCCTGTGTGGGACGTGGATCCACCTCTCCTGTGCTAAGATTAAGAAGACCA  
ACGTCCCCGACTTCTTTATTGCCAGAAATGCAAGGAAGTGAAGCCAGAGGCCCGGGTTAGGGGGGCC  
TCCCAAATCTGGAGAGCCC

**ACGCGT**ACGCGGCCGCTCGAGCAGAAACTCATCTCAGAAGAGGATCTGGCAGCAAATGATATCCTGGATT  
ACAAGGATGACGACGATAAGGTTTAA



[View online »](#)

**Protein Sequence:** >RC200931 protein sequence  
Red=Cloning site Green=Tags(s)

MLEAMAEPSPEDPPPTLKPETQPPEKRRRTIEDFNKFCFVFLAYAGYIPPSKEESDWPASGSSSPLRGES  
 AADSDGWDSAPSDLRTIQTFVKKAKSSKRRAAQAGPTQGPSTF SRLQAPDSATLLEKMKLKDSLFDL  
 DGPKVASPLSPTSLTHTSRPPAALTPVPLSQGDL SHPPRKKDRKNRKLGPAGAGFVGLRRRPRPTPGDGE  
 KRSRIKSKKRKLKKAERGDRLPPGPPQAPPSDSEEEEEEEEEEMATVVGGEAPVPLPTPPE  
 APRPPATVHPEGVPPADSESEKVGSTETSDQGDASSSEGEMRVMDIEDIMVESGDSDWDLITCYCRKPFAG  
 RPMIECSLCGTWIHLSCAIKKTNPDPFFYCQCKELRPEARRLGGPPKSGEP

TRTRPLEQKLISEEDLAANDILDYKDDDDKV

**Chromatograms:** [https://cdn.origene.com/chromatograms/mk6385\\_f08.zip](https://cdn.origene.com/chromatograms/mk6385_f08.zip)

**Restriction Sites:** SgfI-MluI

**Cloning Scheme:**



**ACCN:** NM\_024297

**ORF Size:** 1209 bp

**OTI Disclaimer:** The molecular sequence of this clone aligns with the gene accession number as a point of reference only. However, individual transcript sequences of the same gene can differ through naturally occurring variations (e.g. polymorphisms), each with its own valid existence. This clone is substantially in agreement with the reference, but a complete review of all prevailing variants is recommended prior to use. [More info](#)

**OTI Annotation:** This clone was engineered to express the complete ORF with an expression tag. Expression varies depending on the nature of the gene.

**Components:** The ORF clone is ion-exchange column purified and shipped in a 2D barcoded Matrix tube containing 10ug of transfection-ready, dried plasmid DNA (reconstitute with 100 ul of water).

**Reconstitution Method:**

1. Centrifuge at 5,000xg for 5min.
2. Carefully open the tube and add 100ul of sterile water to dissolve the DNA.
3. Close the tube and incubate for 10 minutes at room temperature.
4. Briefly vortex the tube and then do a quick spin (less than 5000xg) to concentrate the liquid at the bottom.
5. Store the suspended plasmid at -20°C. The DNA is stable for at least one year from date of shipping when stored at -20°C.

**Note:** Plasmids are not sterile. For experiments where strict sterility is required, filtration with 0.22um filter is required.

**RefSeq:** [NM\\_024297.3](#)

**RefSeq Size:** 2041 bp

**RefSeq ORF:** 1212 bp

**Locus ID:** 79142

**UniProt ID:** [Q9BUL5](#)

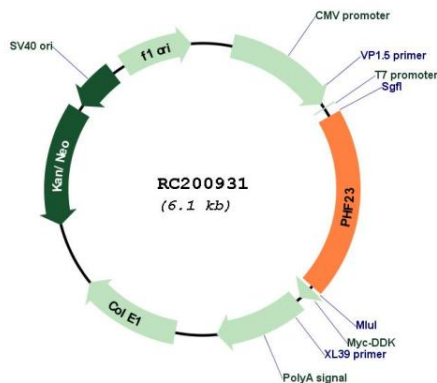
**Cytogenetics:** 17p13.1

**Protein Families:** Druggable Genome, Transcription Factors

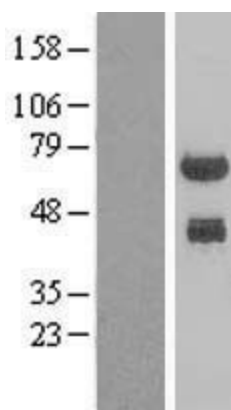
**MW:** 43.8 kDa

**Gene Summary:** Acts as a negative regulator of autophagy, through promoting ubiquitination and degradation of LRSAM1, an E3 ubiquitin ligase that promotes autophagy in response to starvation or infecting bacteria.[UniProtKB/Swiss-Prot Function]

**Product images:**



Circular map for RC200931



Western blot validation of overexpression lysate (Cat# [LY411318]) using anti-DDK antibody (Cat# [TA50011-100]). Left: Cell lysates from untransfected HEK293T cells; Right: Cell lysates from HEK293T cells transfected with RC200931 using transfection reagent MegaTran 2.0 (Cat# [TT210002]).