

## Product datasheet for **RC200930**

### ASMTL (NM\_004192) Human Tagged ORF Clone

#### Product data:

Product Type:	Expression Plasmids
Product Name:	ASMTL (NM_004192) Human Tagged ORF Clone
Tag:	Myc-DDK
Symbol:	ASMTL
Synonyms:	ASMTLX; ASMTLY; ASTML
Mammalian Cell Selection:	Neomycin
Vector:	pCMV6-Entry (PS100001)
E. coli Selection:	Kanamycin (25 ug/mL)



[View online »](#)

**ORF Nucleotide Sequence:**

>RC200930 ORF sequence  
 Red=Cloning site Blue=ORF Green=Tags(s)

TTTTGTAATACGACTCACTATAGGGCGGCCGGGAATTCGTCGACTGGATCCGGTACCGAGGAGATCTGCC  
 GCC**CGGATCGCC**

ATGGTGTGTGCCGGTATTGGGAAGCTGCTGCACAAGCGCTGGTGTGGCCAGCGCCTCCCCACGCC  
 GTCAGGAGATCCTCAGCAACCGGGTCTCAGGTTTGAGGTGGTCCCTCCAAGTTTAAAGAGAAGCTGGA  
 CAAAGCCTCCTTCGCTACTCCGTATGGGTACGCCATGGAGACCGCAAGCAGAAGGCCCTGGAGGTGGCC  
 AACCGGTGTACCAGAAAGACTGCGGGCCCCGACGTGGTCATTGGAGCGGACACGATCGTGACGGTGC  
 GGGGGCTGATTCTGGAGAAGCCGGTGGACAAGCAGGACGCTACAGGATGCTGTCCCGTTGAGTGGGAG  
 AGAACACAGCGTGTTCACAGGTGTCGGATCGTCCACTGCTCCAGCAAAGACCATCAGCTGGACACCAGG  
 GTCTCGGAATTCTACGAGAAACGAAGTGAAGTTCTCGAGCTGTCGAGGAGCTGCTCTGGGAATACG  
 TCCACAGCGGGGAGCCCATGGACAAAGTGGCGGCTACGGGATCCAGGCCCTGGCGGCATGCTGGTGA  
 GTCGTACACGGGACTTCTGAACGTGGTGGGATCCCCTGAACCACTTCTGCAAGCAGCTGGTGAAG  
 CTCTACTACCCGCCCCCGCCGGAGGACCTGCGGGGAGTGTCAAGCAGACTCCATCCCGCCCGCGGACA  
 CCTTCGAAGACCTCAGTGACGTGGAGGGGGTGGCTCGGAGCCACTCAGAGGGACGCGGGCAGCCGCGA  
 TGAGAAAGCCGAGGCGGGAGAGGCGGGACAGGCCACGGCAGAGGCTGAGTGTACAGGACTCGGGAGACC  
 CTGCCTCCGTTCCCGACACGCCTCTGGAGCTGATTGAGGGCTTATGCTATCCAAGGCCCTGCTCACCG  
 CTTGCAAACCTGAAGGTGTTTCGATTTGTTAAAAGATGAAGCACCCAGAAGGCTGCGGATATTGCCAGCAA  
 AGTGGACGCCTCTGCGTGTGGAATGGAGAGGCTTCTGGACATCTGTGCTGCCATGGGGCTCTGGAGAAG  
 ACAGAGCAAGGTTACAGTAACACAGAGACAGCGAACGTCTACCTGGCATCGGATGGCGAATACTCTCTGC  
 ACGGCTTCATCATGCACAATAATGACCTCACATGGAACCTTTTACATACCTGGAGTTTGGCATCCGAGA  
 GGGAAACAACCAGCACACAGGGCGTTGGGAAGAAGGCCGAAGATCTGTTCCAGGATGCGTACTACCAG  
 AGCCCGGAGACGCGGCTGAGTTTCATGCGGGCCATGCACGGCATGACGAAGCTGACTGCGTGCCAGGTGG  
 CCACGGCCTTCAATCTGTCCCGTTCTCTCCGCTGCGACGTGGGAGGCTGCACCGGTGCACTGGCCCG  
 AGAGCTGGCCCGTGAATACCTCGTATGCAGGTGACTGTGTTGACCTCCAGACATTATCGAGCTGGCC  
 GCCCACTTCAACCCCCGACCGCAGGCACTGCAGATCCACTTCGACGAGGTGACTTTTTTCAGGGACC  
 CCCTCCCAGCGTGAAGTGTACGCTCTGTGCCGATCTGCATGACTGGCCAGACGACAAAGTCCACAA  
 GTTACTCAGCAAGGTCGCGAGAGCTGCAAGCCAGGGCCCGCCTGCTGCTGGTGGAGACGCTCCTGGAT  
 GAGGAGAAGAGGTTGGCGACGCGCCCTGATGCAGTCACTGAACATGCTGGTGCAGACTGAAGGCAAGG  
 AGCGGAGCTGGCGAGTATCAGTGCTTCTGGAGCTGCACGGCTCCACCAGGTGCAGGTGGTGCCTT  
 GGGGGTGTCTGGATGCCATCTTGCCACCAAAGTGGCCCC

**ACGCGT**ACGCGGCCGCTCGAGCAGAACTCATCTCAGAAGAGGATCTGGCAGCAAATGATATCCTGGATT  
 ACAAGGATGACGACGATAAGGTTAA

**Protein Sequence:**

>RC200930 protein sequence  
 Red=Cloning site Green=Tags(s)

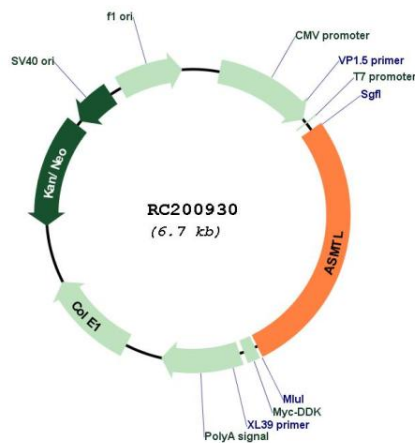
MVLCPIVIGKLLHKRVVLASAPRRQEILSNAGLRFVVPKFKKLDKASFATPYGYAMETAKQKALEVA  
 NRLYQKDLRAPDVVIGADTIVTVGGILEKPVKQDAYRMLSRLSGREHSVFTGVAIVHCSSKDHQLDTR  
 VSEFYEEKVKVSELSEELLWEYVHSGEPMDKAGGYGIQALGGMLVESVHGDFLNVVGFPLNHFCKQLVK  
 LYYPPRPEDLRRSVKHDSIPAADTFEDLSDVEGGGSEPTQRDAGSRDEKAEAGEAQATAEAECHRTRET  
 LPPFPTRLLELIEGFMLSKGLLTACKLKVFDLLKDEAPQKAADIASKVDASACGMERLLDICAAMGLLEK  
 TEQYSNTETANVYLASDGEYSLHGFIMHNNDLTWNLFYLEFAIREGNTQHHRALGKKAEDLFQDAYYQ  
 SPETRLRFMRAMHGMKLTACQVATAFNLSRFSSACDVGCTGALARELAREYPRMQVTYFDLPDIIELA  
 AHFQPPGPQAVQIHFAAGDFFRDPLPSAELYVLCRILHDWPDDKVHKLKSKVAESCKPGAGLLLVELLD  
 EEKRVAQRALMQSLNMLVQTEGKERSLGEYQCLELHGFHQVQVHLGGVLDAILATKVAP

**TR**TRPLEQKLISEEDLAANDILDYKDDDDKV

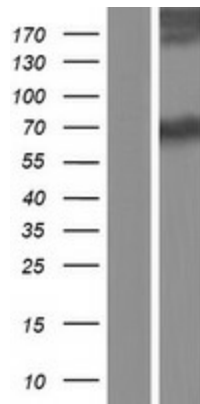


**Locus ID:** 8623  
**UniProt ID:** [O95671](#)  
**Cytogenetics:** X;Y  
**Domains:** Methyltransf\_2, Maf  
**MW:** 68.8 kDa  
**Gene Summary:** The protein encoded by this gene has an N-terminus that is similar to the multicopy associated filamentation (maf) protein of *Bacillus subtilis* and to orfE of *Escherichia coli*, while the C-terminus is similar to N-acetylserotonin O-methyltransferase. This gene is located in the pseudoautosomal region 1 (PAR1) of X and Y chromosomes. Three transcript variants encoding different isoforms have been found for this gene. [provided by RefSeq, Mar 2010]

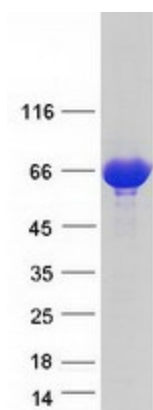
### Product images:



Circular map for RC200930



Western blot validation of overexpression lysate (Cat# [LY418150]) using anti-DDK antibody (Cat# [TA50011-100]). Left: Cell lysates from untransfected HEK293T cells; Right: Cell lysates from HEK293T cells transfected with RC200930 using transfection reagent MegaTran 2.0 (Cat# [TT210002]).



Coomassie blue staining of purified ASMTL protein (Cat# [TP300930]). The protein was produced from HEK293T cells transfected with ASMTL cDNA clone (Cat# RC200930) using MegaTran 2.0 (Cat# [TT210002]).