

Product datasheet for **RC200928**

GMCL1 (NM_178439) Human Tagged ORF Clone

Product data:

Product Type:	Expression Plasmids
Product Name:	GMCL1 (NM_178439) Human Tagged ORF Clone
Tag:	Myc-DDK
Symbol:	GMCL1
Synonyms:	BTBD13; GCL; GCL1; SPATA29
Vector:	pCMV6-Entry (PS100001)
E. coli Selection:	Kanamycin (25 ug/mL)
Cell Selection:	Neomycin



[View online »](#)

ORF Nucleotide
Sequence:

>RC200928 ORF sequence
Red=Cloning site Blue=ORF Green=Tags(s)

TTTTGTAATACGACTCACTATAGGGCGGCCGGGAATTCGTCGACTGGATCCGGTACCGAGGAGATCTGCC
GCCGCGATCGCC

ATGGGATCGTTGAGCAGCCGGTCTGCGCCAGCAAGACCAGCCCTTGCCAGCAGGCGCAGGGTGCCA
GGGCGGGGGCTCGGCCCGAGGCCGACACTGGAGACGATGCGGCGGGCCACGATTCTGTACTGTGC
GGGAGCCACAAGCGCAAGCGGAGCAGCGGCTCTTCTGCTACTGTACCCCTGACTCGGAGACGGACGAG
GATGAGGAGGAGGGGACGAGCAGCAGCGGCTCCTCAACACCCCTCGAAGGAAAAAATAAAGAGTACAT
CTAAATATATTTATCAACATTATTTTTGAATGGTGAAAACAGTGACATTAAGATTTGTGCTCTAGGAGA
AGAATGGAGCTTACACAAAATATATTTATGTCAATCTGGCTACTTTCTAGTATGTTCAAGTGTCTTGG
AAAGAATCCAGCATGAATATTATTGAAGTGGAGATTCCTGACCAGAACATTGATGTAGAAGCACTGCAGG
TTGCATTTGGTTCAGTATCGAGATGATGCTTGATAAAGCCAGTCGAGTTGTTGCCATTTTGGCAGC
AGCTTGTGTTGCTGCAAGTTGACGGTTTAAACAGCAGTGTGGTGAGACAATGAAGGAAACAGTTAATGTG
AAAAGTGTATGTGGCTATTACACATCAGCAGGGACCTATGGATTAGATTCGTAAAGAAAAAGTGCCTTG
AATGGCTTCTAAACAATTTGATGACTCACCAGAATGTTGAACTTTTTAAAGAACTCAGTATAAATGTCAT
GAAACAGCTCATTGGTTCATCTAACTTATTTGTGATGCAAGTGGAGATGGATATACACTGCTCTAAAA
AAGTGGATGTTCCCTTCAACTTGTGCCTTCTTGGAAATGGATCTTTAAAACAGCTTTTGACAGAAAACAGATG
TCTGGTTTTCTAAACAGAGGAAAGATTTTGAAGGTATGGCCTTTCTTGAAGTGAACAAGGAAAACATT
TGTGTCAGTATTCAGACATTTAAGGTTACAATATATTATCAGTATGCTGGCTTCTGCAAGAATATTGAA
CAAGATGCTGTAGTACCTCAGAATGGCTCTCTCTGTGTATAAACAGCAGTGGTTTGTATGCTGCGGG
CAGAACAGGACAGTGAAGTGGGCTCAAGAAATCAATAAAGAAGAACTAGAGGAAAACAGCATGAGGTT
TGGTAGAAAGCTTGCCAAAGATGGTGAATACTGCTGGCCTTGGACAGGTTTTAACTTCGGCTTCGACCTA
CTTGTAAGTACACCAATCGATACATCTTTTCAACGCAATACACTGAATCAGCCATGTAGCGGATCTG
TCAGTTTACAGCCTCGAAGGAGCATAGCATTAGATTACGTTTGGCTTCTTTGATAGTAGTGGAAAAC
AATATGTAGTAGAACTGGCTATCAATACTTACACTTGAAGGATCAGGAACAAGTGGTGTAGAAC
TTGGACAGCAGGCTTCTGATCTCCCTTATATATCTGCTGTAAGTCTTGTATATATCACCAGAAAAA
AGAAT

ACGCGTACGCGGCCGCTCGAGCAGAACTCATCTCAGAAGAGGATCTGGCAGCAAATGATATCCTGGATT
ACAAGGATGACGACGATAAGGTTTAA

Protein Sequence:

>RC200928 protein sequence
Red=Cloning site Green=Tags(s)

MGSLSSRVLQRPRPALAQQAQGARAGGSARRPDTGDDAAGHGFCYAGSHKRKRSSGSFCYCHPDESETDE
DEEEGDEQQRLLNTPRRKLLKSTSKYIYQTLFLNGENSDIKICALGEEWSLHKIYLCQSGYFSSMFSGSW
KESSMNIIELEIPDQNIQVEALQVAFGSLYRDDVLKPSRVVAIALAAACLLQLDGLIQCGETMKETVNV
KTVCGYYTSAGTYGLDSVKKKLEWLLNLMTHQNVLEFKELINVMKQLIGSSNLFVMQVEMDIYALK
KWMFLQLVPSWNGSLKQLLTETDVWFSKQRKDFEGMAFLETEQGKPFVSVFRHLRLQYIISDLASARIE
QDAVVPSEWLVSSYKQWFAMLRAEQDSEVGPQEIINKEELEGNMRCGRKLAKDGEYCWRWTGFNFGFDL
LVYTNRYIIFKRNTLNQPCSGSVSLQPRRSIAFRLRLASFDSSGKLI CSRTTGYQILTLEKDQEQVVMN
LDSRLLIFPLYICCNFLYISPEKKN

TRTRPLEQKLI SEEDLAANDILDYKDDDDKV

Chromatograms:

https://cdn.origene.com/chromatograms/mk6406_d10.zip

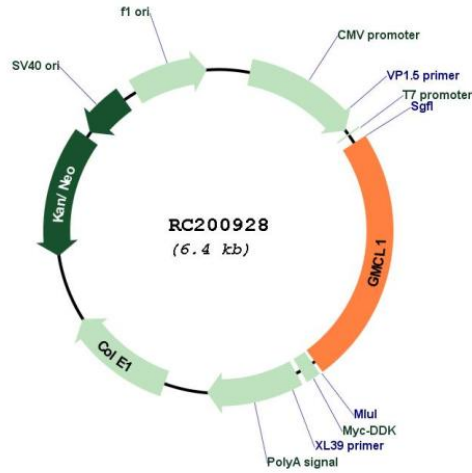
Restriction Sites:

SgfI-MluI

Cloning Scheme:



Plasmid Map:

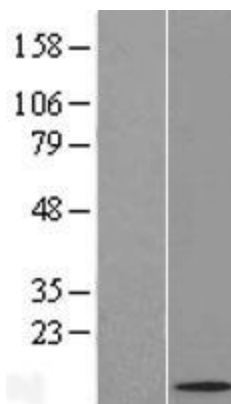


ACCN:

NM_178439

ORF Size:	1545 bp
OTI Disclaimer:	The molecular sequence of this clone aligns with the gene accession number as a point of reference only. However, individual transcript sequences of the same gene can differ through naturally occurring variations (e.g. polymorphisms), each with its own valid existence. This clone is substantially in agreement with the reference, but a complete review of all prevailing variants is recommended prior to use. More info
OTI Annotation:	This clone was engineered to express the complete ORF with an expression tag. Expression varies depending on the nature of the gene.
RefSeq:	NM_178439.5
RefSeq Size:	2402 bp
RefSeq ORF:	1548 bp
Locus ID:	64395
UniProt ID:	Q96IK5 , Q53SE7
MW:	58.7 kDa
Gene Summary:	This gene encodes a nuclear envelope protein that appears to be involved in spermatogenesis, either directly or by influencing genes that play a more direct role in the process. This multi-exon locus is the homolog of the mouse and drosophila germ cell-less gene but the human genome also contains a single-exon locus on chromosome 5 that contains an open reading frame capable of encoding a highly-related protein. [provided by RefSeq, Jul 2008]

Product images:



Western blot validation of overexpression lysate (Cat# [LY405961]) using anti-DDK antibody (Cat# [TA50011-100]). Left: Cell lysates from untransfected HEK293T cells; Right: Cell lysates from HEK293T cells transfected with RC200928 using transfection reagent MegaTran 2.0 (Cat# [TT210002]).