

Product datasheet for **RC200924**

RAP1GDS1 (NM_021159) Human Tagged ORF Clone

Product data:

Product Type:	Expression Plasmids
Product Name:	RAP1GDS1 (NM_021159) Human Tagged ORF Clone
Tag:	Myc-DDK
Symbol:	RAP1GDS1
Synonyms:	GDS1; SmgGDS
Mammalian Cell Selection:	Neomycin
Vector:	pCMV6-Entry (PS100001)
E. coli Selection:	Kanamycin (25 ug/mL)



[View online »](#)

ORF Nucleotide Sequence:

>RC200924 ORF sequence
 Red=Cloning site Blue=ORF Green=Tags(s)

TTTTGTAATACGACTCACTATAGGGCGGCCGGAATTCGTCGACTGGATCCGGTACCGAGGAGATCTGCC
 GCC**CGCATCGCC**

ATGGCAGATAATCTCAGTGATACCTTGAAGAAGCTGAAGATAACAGCTGTTGACAAGACTGAGGATAGTT
 TAGAAGGATGCTTGGATTGTCTGCTTCAAGCCCTGGCTCAAAATAATACGGAAACAAGTGAAAAATCCA
 AGCAAGTGAATACTTACAGCTGTTTGAACCTCTGTTGACTCCACAGTCTTCTGCAAAGCCAAAGTAGCT
 AACATCATAGCAGAAGTAGCCAAAAATGAGTTTATGCGAATTCATGTGTGGATGCTGGATTGATTTAC
 CACTGGTGCAGCTGCTAAATAGCAAAGACCAGGAAGTGTCTTCAAACGGGCAGGGCTCTAGGAAACAT
 ATGTTACGATAGCCATGAGGGCAGAAGTGCAGTTGACCAAGCAGGTGGTGCACAGATTGTAATTGACCAT
 TTAAGGTCAGTGTGCAGTAAACAGATCCCCCAATGAGAAGCTTTGACTGTCTTTGTGGCATGCTGA
 TGAAGTATAGCAATGAGAATGATTGCTTCAAGCTCAGCTTATCAATATGGGTGTTATTCCTACCTTAGT
 GAAATTACTGGGCATCCACTGCCAAAATGCAGCTTTACAGAAATGTGTCTTGTTCATTGGTAATTTA
 GCAGAAGTGGAGTCAAGTAAAGAACAGTTTGCCAGTACAAACATTGCTGAAGAGCTAGTAAAACCTTCA
 AGAAACAATAGAACATGATAAGAGAGAAATGATTTTTGAAGTCTTGTCTCCATTGGCAGAAAATGATGC
 TATTAACACAGCTGGTTGAAGCAGGCCTAGTAGAGTGTCTACTAGAGATTGTTGAGCAAAAAGTGGAT
 AGTGACAAAGAAGATGATTAAGTGCAGCTCAAACTGGTTCAGATCTCATGGTTTTACTTCTTGGAG
 ATGAATCCATGCAGAAGTATTTGAAGGAGGAAAAGGTAGTGTATTTCAAAGGACTCTCTTGGATCCC
 ATCAAATAACCACAGCTACAGCTTGTGGAGCATTGGCAATTGCAAATTTGCCAGAAATGATGCAAAAT
 TGTATTCATATGGTAGACAATGGGATTGTAGAAAACTTATGGATTTACTGGACAGACATGTAGAAGATG
 GAAATGTAACAGTACAGCATGCAGCACTAAGTGCCTCAGAAACCTGGCCATTCCAGTTATAAATAAAGC
 AAAGATGTTATCAGCTGGGGTACAGAGGCAGTTTTGAAATTTCTTAAATCTGAAATGCCTCCTGTTGAG
 TTCAAACCTTCTGGGAACATTAAGAATGTTAATAGATGCACAAGAAGCTGCTGAACAATTGGGAAAGAATG
 TTAAGTTAGTGGAGCGTTTGGTGAATGGTGTGAAGCCAAAGATCATGCTGGTGTGATGGGGAGTCAAA
 CAGACTGCTGTCTGCCCTTATACGACACAGTAAATCAAAGATGTAATTAACCATTGTGCAGAGTGGT
 GGCATCAAGCATCTAGTTACCATGGCAACTAGTGAACATGTAATAATGCAGAATGAAGCTCTTGTGCTT
 TGGCATTAAATAGCAGCTTGAATTTGGCACTGCTGAGAAAGATCTAGAAAGTCTAAACTGTACAGAT
 TTTACATAGACTGCTAGCAGATGAGAGAAGTGTCTCTGAAATCAAATATAATTCCATGGTCTGATATGT
 GCTCTTATGGGATCTGAATGTCTACACAAGGAAGTACAGGATTTGGCTTTCTAGATGTCGTATCCAAAC
 TTCGCAGTCATGAGAACAAAAGTGTGCCAGCAGGCCTCTCTCACAGAGCAGAGACTTACTGTGAAAAG
 C

ACGCGTACGCGGCCGCTCGAGCAGAAACTCATCTCAGAAGAGGATCTGGCAGCAAATGATATCCTGGATT
 ACAAGGATGACGACGATAAGGTTTAA

Protein Sequence:

>RC200924 protein sequence
 Red=Cloning site Green=Tags(s)

MADNLSDTLKKLKITAVDKTEDSLEGCLDCLLQALAQNNTETSEKIQASGILQLFATLLTPQSSCKAKVA
 NIIAEVAKNEFMRIPCVDAGLISPLVQLLNSKDQEVLLQTGRALGNICYDSHEGRSAVDQAGGAQIVIDH
 LRSLCSITDPANEKLLTVFCGMLMNYSNENDSLQAQLINMGVIPTLVKLLGIHCQNAALTEMCLVAFGNL
 AELESSKEQFASTNIAEELVKLFFKQIEHDKREMI FEVLAPLAENDA IKLQLVEAGLVECLLEIVQQKVD
 SDKEDDITELKTGSDLMVLLLLGDSEMQKLFEGGKGSVFQRVLSWIPSNHQLQLAGALAIANFARNDAN
 CIHMVNGIVEKLMDLLDRHVEDGNVTVQHAALSALRNLAIIPVINKAKMLSAGVTEAVLKFLKSEMPVQ
 FKLLGTLRMLIDAQEAEEQLGKNVKLVERLVEWCEAKDHAGVMGESNRLLSALIRHKS KDVIKTI VQSG
 GIKHLVTMATSEHVIMQNEALVALALIAALELGTAEKDLES AKLVQILHRL LADERSAPEIKYNSMVLIC
 ALMGSECLHKEVQDLAFLDVVSKLRSHENKSVAAQASL TEQR LTVES

TRTRPLEQKLISEEDLAANDILDYKDDDDKV

Chromatograms: https://cdn.origene.com/chromatograms/mk6155_a01.zip

Restriction Sites: SgfI-MluI

Cloning Scheme:



ACCN: NM_021159

ORF Size: 1821 bp

OTI Disclaimer: The molecular sequence of this clone aligns with the gene accession number as a point of reference only. However, individual transcript sequences of the same gene can differ through naturally occurring variations (e.g. polymorphisms), each with its own valid existence. This clone is substantially in agreement with the reference, but a complete review of all prevailing variants is recommended prior to use. [More info](#)

OTI Annotation: This clone was engineered to express the complete ORF with an expression tag. Expression varies depending on the nature of the gene.

Components: The ORF clone is ion-exchange column purified and shipped in a 2D barcoded Matrix tube containing 10ug of transfection-ready, dried plasmid DNA (reconstitute with 100 ul of water).

- Reconstitution Method:**
1. Centrifuge at 5,000xg for 5min.
 2. Carefully open the tube and add 100ul of sterile water to dissolve the DNA.
 3. Close the tube and incubate for 10 minutes at room temperature.
 4. Briefly vortex the tube and then do a quick spin (less than 5000xg) to concentrate the liquid at the bottom.
 5. Store the suspended plasmid at -20°C. The DNA is stable for at least one year from date of shipping when stored at -20°C.

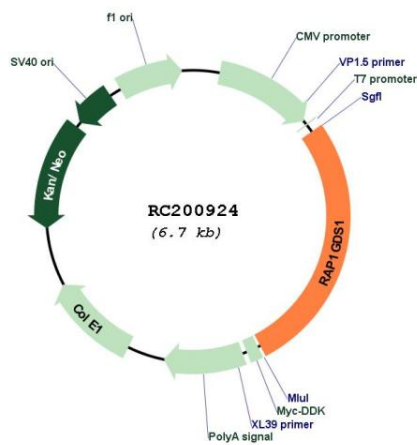
Note: Plasmids are not sterile. For experiments where strict sterility is required, filtration with 0.22um filter is required.

RefSeq: [NM_021159.3](#), [NP_066982.2](#)

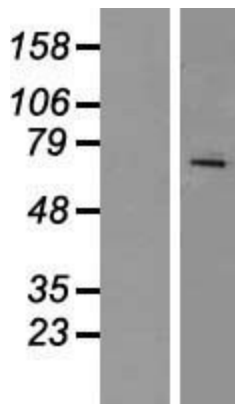
RefSeq Size: 3767 bp

RefSeq ORF:	1824 bp
Locus ID:	5910
UniProt ID:	P52306
Cytogenetics:	4q23
Domains:	Armadillo_seg
MW:	66.3 kDa
Gene Summary:	The smg GDP dissociation stimulator (smgGDS) protein is a stimulatory GDP/GTP exchange protein with GTPase activity (Riess et al., 1993 [PubMed 8262526]).[supplied by OMIM, Feb 2010]

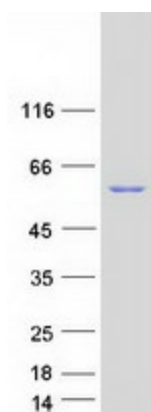
Product images:



Circular map for RC200924



Western blot validation of overexpression lysate (Cat# [LY420266]) using anti-DDK antibody (Cat# [TA50011-100]). Left: Cell lysates from untransfected HEK293T cells; Right: Cell lysates from HEK293T cells transfected with [RC212781] using transfection reagent MegaTran 2.0 (Cat# [TT210002]).



Coomassie blue staining of purified RAP1GDS1 protein (Cat# [TP300924]). The protein was produced from HEK293T cells transfected with RAP1GDS1 cDNA clone (Cat# RC200924) using MegaTran 2.0 (Cat# [TT210002]).