

Product datasheet for **RC200920**

LRSAM1 (NM_001005373) Human Tagged ORF Clone

Product data:

Product Type:	Expression Plasmids
Product Name:	LRSAM1 (NM_001005373) Human Tagged ORF Clone
Tag:	Myc-DDK
Symbol:	LRSAM1
Synonyms:	CMT2P; RIFLE; TAL
Vector:	pCMV6-Entry (PS100001)
E. coli Selection:	Kanamycin (25 ug/mL)
Cell Selection:	Neomycin



[View online »](#)

ORF Nucleotide
Sequence:

>RC200920 ORF sequence
Red=Cloning site Blue=ORF Green=Tags(s)

TTTTGTAATACGACTCACTATAGGGCGGCCGGAATTCGTCGACTGGATCCGGTACCGAGGAGATCTGCC
GCCGCGATCGCC

ATGCCGCTCTTCTCCGGAAGCGGAAACCCAGTGAGGAGCTCGGAAACGCTGGAGTACCAGATGTGTT
TGGCAAAAAGAAGCTGGGGCAGATGACATTCTCGACATCTCTAAATGTGAGCTCTCAGAGATTCCATTGG
AGCTTTTGCAACATGCAAAGTTCTGCAGAAGAAGTGCTGATCGTCCACACGAATCACCTCACTTCCCTG
CTTCCAAATCTGCAGCCTCTGAGTCTGGCAACCATTAAGTTCTAGATCTCCACGATAATCAGCTGA
CAGCCCTTCTGACGATCTGGGGCAGTACTGCCCTCCAGGCTTAAACGTGGAAGGAATCAACTGAT
GCAGCTCCACGTTCCATTGGGAACCTGACCCAGCTCCAGACTCTCAATGTTAAAGACAACAAGCTGAAG
GAGCTTCCAGACACCGTGGGGGAGCTTCGAAGCCTGCGTACCCTCAACATCAGTGGAAACGAGATCCAGA
GATTGCCGCAGATGCTGGCTCACGTTCGAACCTGGAGATGCTGAGCCTTGACGCCTCGGCCATGGTCTA
CCCGCCGCGGGAGGTGTGTGGTCCGGCCTGCGGCCATCTTGACGTTCTCTGCAAAGAGTCAGGGCTG
GAATACTACCCCTTCTCAGTACTTGCTGCCAATTCGGAGCAAGATGGAATCGAGAATCTCGGGACA
GCCCTGATGGGCCACCGACAGATTCTCAAGGGAGGAGTTAGAGTGGCAGAACAGGTTCTCAGACTATGA
GAAGAGGAAGGAACAGAAGATGCTGGAGAACTCGAGTTTGAACGGCGCCTGGAATCGGGCAGCGGGAG
CACACCCAGCTCCTTCAGCAGAGCAGCAGCCAGAAGGATGAGATCCTTCAGACGGTCAAGGAGGAGCAGT
CCCGGCTGGAGCAGGGCCTGAGTGAACACAGCAGCCACCTCGACGCAGAGCGGCAGCGGCTGCAGGAGCA
GCTGAAGCAGACGGAACAGAACATTTCCAGCCGGATCCAGAAGCTGCTGCAGGACAATCAGAGACAAAAG
AAAAGCTCCGAGATTTTAAAATCGCTGGAAAATGAAAGAATAAGAATGGAACAGTTGATGTCCATAACCC
AGGAGGAGACTGAGAGCCTGCGGGCAGCTGACGTTGCCCTCCGCCATGCAGCAGATGCTGACTGAGCTG
TAAGAACCGGCTCATCCAGATGGCTACGAATCTCAGAGGCAGAACTTGGTCCAGCAGGCCTGTTCCAGC
ATGGCCGAAATGGATGAACGATTCCAGCAGATTCTGTCGTGGCAGCAAATGGATCAGAACAAGCCATCA
GCCAGATCCTGCAGGAGAGCGCGATGCAGAAGGCTGCGTTGAGGCACTCCAGGTGAAGAAAGACCTGAT
GCATCGGCAGATCAGGAGCCAGATTAAGTTAATAGAACTGAGTTATTGCAGCTGACACAGCTGGAGTTA
AAGAGGAAGTCCCTGGACACAGAGTCACTCCAGGAGATGATCTCGGAGCAGCGCTGGGCCCTCAGCTCCC
TGCTCCAGCAGCTGCTCAAAGAGAAGCAGCAGCGAGAGGAAGAGCTCCGGGAAATCTGCAGGAGTTAGA
AGCCAAAAGTGAACACAGCAGGAAAATTAAGTGGCTGATTCAGTATCAACGGCTTTTGAACCAGAAGCCC
TTGTCCTTGAAGCTGCAAGAAGAGGGGATGGAGCGCCAGCTGGTGGCCCTCCTGGAGGAGCTGTCGGCTG
AGCACTACCTGCCATCTTTGCGCACCCAGCCTCTCACTGGACCTGCTGAGCCAAATGAGCCCAGGGGA
CCTGGCCAAGGTGGGCGTCTCAGAAGCTGGCCTGCAGCACGAGATCCTCCGGAGAGTCCAGGAACTGCTG
GATGCAGCCAGGATCCAGCCAGAGCTGAAACCAATGGGTGAGGTGCTCACCCCTACGGCCCCCAGG
AGCCTCCTGAGTCTGTGAGGCCATCCGCTCCCCCTGCAGAGCTGGAGGTGCAGGCCTCAGAGTGTGTCGT
GTGCTGGAACGGGAGGCCAGATGATCTTCTCAACTGTGGCCACGTCTGCTGCTGCCAGCAGTGTCTGC
CAGCCACTGCGCACCTGCCCGCTGTGCCCCAGGACATCGCCAGCGCCTCCGCATCTACCACAGCAGC

ACGCGTACGCGGCCGCTCGAGCAGAACTCATCTCAGAAGAGGATCTGGCAGCAAATGATATCCTGGATT
ACAAGGATGACGACGATAAGGTTTAA

Protein Sequence: >RC200920 protein sequence
 Red=Cloning site Green=Tags(s)

```
MPLFFRKRKPSEEARKRLEYQMCLAKEAGADDILDISKCELSEIPFGAFATCKVLQKKVLIVHTNHLTSL
LPKSCSLLSLATIKVLDLHDNQLTALPDDLQQLTALQVLNVERNQLMQLPRSIGNLTQLTLNVKDNKLLK
ELPDTVGEGLRSLRTLNI SGNEIQRLPQMLAHVRTLEMLSLDASAMVYPPREVCGAGTAAIQLFCKESGL
EYPPSQYLLPILEQDGIENSRDSDGPTDRFSREELEWQNRFSDEYKRKEQKMLEKLEFERRLELQORE
HTQLLQQSSQKDEILQTVKEEQSRLEQGLSEHQRLDAERQRLQEQLKQTEQNISSRIQKLLQDNQRQK
KSSEILKSLENERIRMEQLMSITQEETESLRRRDVASAMQQLTESCKNRLIQMAYESQRQNLVQQACSS
MAEMDERFQQILSWQQMDQNKAI SQILQESAMQKAAFEALQVKKDLMHRQIRSQIKLIETELLQLTQLEL
KRKSLDTESLQEMISEQRWALSSLLQQLLKEKQQREEELREILTELEAKSETRQENYWL IQYQRLNQP
LSLKLQEEGMRQLVALLEELSAHYLPIFAHRLSLDLLSQMSPGDLAKVGVSEAGLQHEILRRVQELL
DAARIQPELPPMGEVVPTAPQEPPE SVRPSAPPAELEVQASECVVCLEREAQMIFLNCGHVCCCQCC
QPLRTRCPLCRQDIAQRLRIYHSS
```

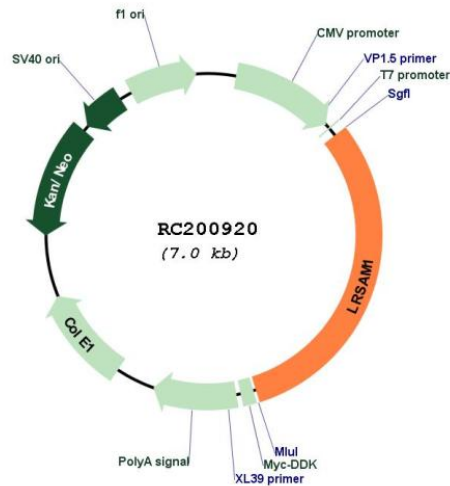
TRTRPLEQKLI SEEDLAANDILDYKDDDDKV

Chromatograms: https://cdn.origene.com/chromatograms/mk6691_h10.zip

Restriction Sites: SgfI-MluI

Cloning Scheme:



Plasmid Map:


ACCN: NM_001005373

ORF Size: 2169 bp

OTI Disclaimer: The molecular sequence of this clone aligns with the gene accession number as a point of reference only. However, individual transcript sequences of the same gene can differ through naturally occurring variations (e.g. polymorphisms), each with its own valid existence. This clone is substantially in agreement with the reference, but a complete review of all prevailing variants is recommended prior to use. [More info](#)

OTI Annotation: This clone was engineered to express the complete ORF with an expression tag. Expression varies depending on the nature of the gene.

RefSeq: [NM_001005373.4](#)

RefSeq Size: 3146 bp

RefSeq ORF: 2172 bp

Locus ID: 90678

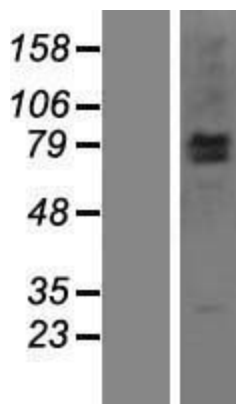
UniProt ID: [Q6UWE0](#), [A0A024R870](#)

Protein Families: Druggable Genome

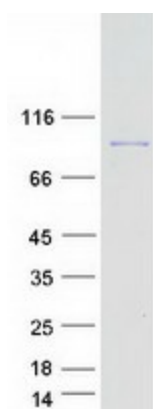
MW: 83.6 kDa

Gene Summary: This gene encodes a ring finger protein involved in a variety of functions, including regulation of signaling pathways and cell adhesion, mediation of self-ubiquitylation, and involvement in cargo sorting during receptor endocytosis. Mutations in this gene have been associated with Charcot-Marie-Tooth disease. Multiple transcript variants encoding different isoforms have been identified for this gene. [provided by RefSeq, Jan 2012]

Product images:



Western blot validation of overexpression lysate (Cat# [LY423707]) using anti-DDK antibody (Cat# [TA50011-100]). Left: Cell lysates from untransfected HEK293T cells; Right: Cell lysates from HEK293T cells transfected with [RC223778] using transfection reagent MegaTran 2.0 (Cat# [TT210002]).



Coomassie blue staining of purified LRSAM1 protein (Cat# [TP300920]). The protein was produced from HEK293T cells transfected with LRSAM1 cDNA clone (Cat# RC200920) using MegaTran 2.0 (Cat# [TT210002]).