

Product datasheet for RC200919

PRAS40 (AKT1S1) (NM_032375) Human Tagged ORF Clone

Product data:

Product Type:	Expression Plasmids
Product Name:	PRAS40 (AKT1S1) (NM_032375) Human Tagged ORF Clone
Tag:	Myc-DDK
Symbol:	PRAS40
Synonyms:	Lobe; PRAS40
Mammalian Cell Selection:	Neomycin
Vector:	pCMV6-Entry (PS100001)
E. coli Selection:	Kanamycin (25 ug/mL)
ORF Nucleotide Sequence:	>RC200919 representing NM_032375 Red=Cloning site Blue=ORF Green=Tags(s)

TTTTGTAATACGACTCACTATAGGGCGGCCGGAATTCGTCGACTGGATCCGGTACCGAGGAGATCTGCC
GCC**CGATCGCC**

ATGGCGTCGGGGCGCCCCGAGGAGCTGTGGGAGGCCGTGGTGGGGCCGCTGAGCGCTTCCGGGCCGGA
CTGGCACGGAGCTGGTGTGCTGACCGCGGCCCGCCGCCACCACCCGCCCCGGGCCCTGTGCCTATCC
TGCCCATGGTCGAGGAGCCCTGGCGGAGGCAGCGCCGTTGCCTCCACGACATCGCACTGGCCACAGG
GCTGCCACTGCTGCTCGCCTCCTGCGCCCCACCAGCACACAGCCACCCAGTCCACACCCAGCCAC
CCCGGCCTACCTGGCCAGAGAGACAACGAGGAGGACGAGGATGAGCCACAGACAGAGACCTCCGG
GGAGCAGCTGGGCATTAGTGATAATGGAGGGCTCTTTGTGATGGATGAGGACGCCACCTCCAGGACCTT
CCCCCTTCTGTGAGTCAGACCCGAGAGTACAGATGATGGCAGCCTGAGCGAGGAGACCCCGCGGCC
CCCCACCTGCTCAGTGCCCCCAGCCTCAGCCCTACCCACACAGCAGTACGCCAAGTCCCTGCCTGTGTC
TGTGCCCGTCTGGGGCTTCAAGGAGAAGAGGACAGAGGCGCGGTATCAGATGAGGAGAAATGGGCCGCC
TCTTCGCCGACCTGGACCGCATCGCGGCAGCATGCGCGCTGGTGTGCGAGAGGCCGAGGACACCC
AGGTCTTCGGGGACCTGCCACGGCCGCGCTTAAACCAGCGACTTCCAGAAGCTGAAGCGGAAATAT

ACGCGTACGCGGCCGCTCGAGCAGAACTCATCTCAGAAGAGGATCTGGCAGCAAATGATATCCTGGATT
ACAAGGATGACGACGATAAGGTTTAA



[View online »](#)

Protein Sequence: >RC200919 representing NM_032375
Red=Cloning site Green=Tags(s)

MASGRPEELWEAVVGAERFRARTGTELVLLTAAPPPPPRPGPCAYPAHGRGALAEAARRCLHDIALAHR
 AATAARPPAPPAPQPPSPTSPPPRPTLAREDNEDDEPTETETETSGEQLGIDNGLFVMDATLQDL
 PPFCESDPESTDDGSLSEETPAGPPTCSVPPASALPTQQYAKSLPVSVPVWGFKEKRTEARSSDEENGPP
 SSPDLDRIAASMRALVLEAEDTQVFGDLPRPRLNTSDFQKLKRKY

TRTRPLEQKLISEEDLAANDILDYKDDDDKV

Chromatograms: https://cdn.origene.com/chromatograms/mg4077_b01.zip

Restriction Sites: SgfI-MluI

Cloning Scheme:

Cloning sites used for ORF Shuttling:



* The last codon before the Stop codon of the ORF

ACCN: NM_032375

ORF Size: 768 bp

OTI Disclaimer: The molecular sequence of this clone aligns with the gene accession number as a point of reference only. However, individual transcript sequences of the same gene can differ through naturally occurring variations (e.g. polymorphisms), each with its own valid existence. This clone is substantially in agreement with the reference, but a complete review of all prevailing variants is recommended prior to use. [More info](#)

OTI Annotation: This clone was engineered to express the complete ORF with an expression tag. Expression varies depending on the nature of the gene.

Components: The ORF clone is ion-exchange column purified and shipped in a 2D barcoded Matrix tube containing 10ug of transfection-ready, dried plasmid DNA (reconstitute with 100 ul of water).

Reconstitution Method:

1. Centrifuge at 5,000xg for 5min.
2. Carefully open the tube and add 100ul of sterile water to dissolve the DNA.
3. Close the tube and incubate for 10 minutes at room temperature.
4. Briefly vortex the tube and then do a quick spin (less than 5000xg) to concentrate the liquid at the bottom.
5. Store the suspended plasmid at -20°C. The DNA is stable for at least one year from date of shipping when stored at -20°C.

Note: Plasmids are not sterile. For experiments where strict sterility is required, filtration with 0.22um filter is required.

RefSeq: [NM_032375.2](#), [NP_115751.1](#)

RefSeq Size: 2344 bp

RefSeq ORF: 831 bp

Locus ID: 84335

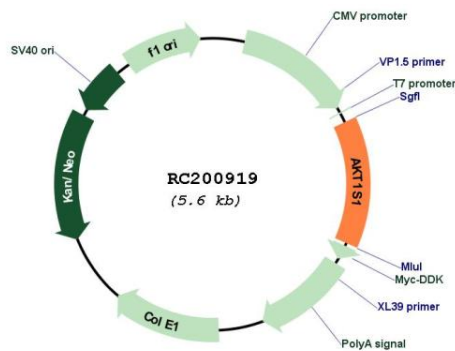
UniProt ID: [Q96B36](#)

Cytogenetics: 19q13.33

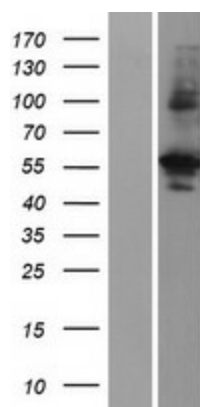
MW: 27.2 kDa

Gene Summary: AKT1S1 is a proline-rich substrate of AKT (MIM 164730) that binds 14-3-3 protein (see YWHAH, MIM 113508) when phosphorylated (Kovacina et al., 2003 [PubMed 12524439]).[supplied by OMIM, Mar 2008]

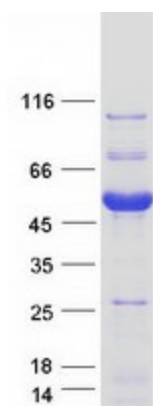
Product images:



Circular map for RC200919



Western blot validation of overexpression lysate (Cat# [LY420655]) using anti-DDK antibody (Cat# [TA50011-100]). Left: Cell lysates from untransfected HEK293T cells; Right: Cell lysates from HEK293T cells transfected with [RC211995] using transfection reagent MegaTran 2.0 (Cat# [TT210002]).



Coomassie blue staining of purified AKT1S1 protein (Cat# [TP300919]). The protein was produced from HEK293T cells transfected with AKT1S1 cDNA clone (Cat# RC200919) using MegaTran 2.0 (Cat# [TT210002]).