

Product datasheet for **RC200916**

DARPP32 (PPP1R1B) (NM_181505) Human Tagged ORF Clone

Product data:

Product Type: Expression Plasmids
Product Name: DARPP32 (PPP1R1B) (NM_181505) Human Tagged ORF Clone
Tag: Myc-DDK
Symbol: DARPP32
Synonyms: DARPP-32; DARPP32
Mammalian Cell Selection: Neomycin
Vector: pCMV6-Entry (PS100001)
E. coli Selection: Kanamycin (25 ug/mL)
ORF Nucleotide Sequence: >RC200916 ORF sequence
Red=Cloning site Blue=ORF Green=Tags(s)

TTTTGTAATACGACTCACTATAGGGCGCCGGGAATTCGTCGACTGGATCCGGTACCGAGGAGATCTGCC
GCC**CGGATCGCC**

ATGCTGTTCCGGCTCTCAGAGCACTCCTCACCAGAGGAGGAAGCCTCCCCCACCAGAGAGCCTCAGGAG
AGGGGCACCATCTCAAGTCGAAGAGACCAACCCCTGTGCCTACACACCACCTTCGCTGAAAGCTGTGCA
GCGCATTGCTGAGTCTCACCTGCAGTCTATCAGCAATTTGAATGAGAACCAGGCCTCAGAGGAGGAGGAT
GAGCTGGGGGAGCTTCGGGAGCTGGTTATCCAAGAGAGGAAGATGAGGAGGAAGAGGAGGATGATGAAG
AAGAGGAAGAAGAAGAGGACAGCCAGGCTGAAGTCTGAAGGTCATCAGGCAGTCTGCTGGGCAAAAGAC
AACCTGTGGCCAGGGTCTGGAAGGGCCCTGGGAGCGCCACCCCTCTGGATGAGTCCGAGAGAGATGGA
GGCTCTGAGGACCAAGTGAAGACCCAGCACTAAGTGAGCCTGGGAGGAACCTCAGCGCCCTCCCCCT
CTGAGCCTGGCACA

ACGCGTACGCGGCCGCTCGAGCAGAACTCATCTCAGAAGAGGATCTGGCAGCAAATGATATCCTGGATT
ACAAGGATGACGACGATAAGGTTTAA

Protein Sequence: >RC200916 protein sequence
Red=Cloning site Green=Tags(s)

MLFRLSEHSSPEEEASPHQRASGEGHHLKSKRPNPCAYTPPSLKAVQRIAESHLSISNLNENQASEEED
ELGELRELGYPREEDEEEEEDEEEEEEDSQAELVKVIRQSAGQKTTCCGQLEGWPWRPPLDESERDG
GSEDQVEDPALSEPGEPPQRPSPEPGT

TRTRPLEQKLISEEDLAANDILDYKDDDDKV

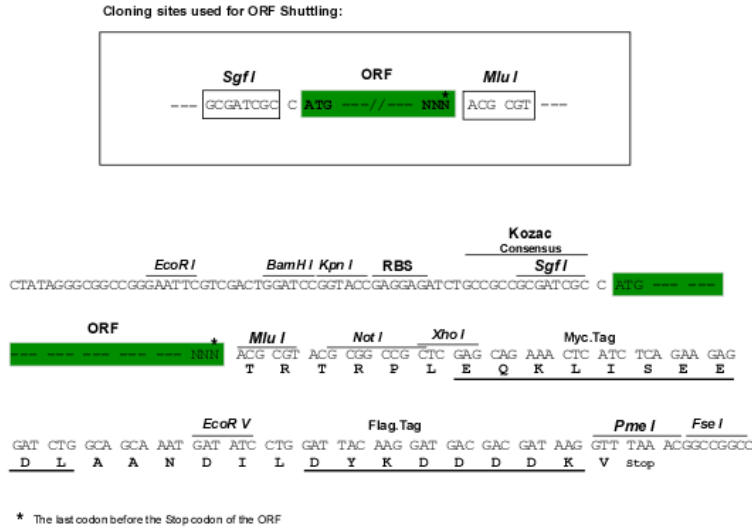
Chromatograms: https://cdn.origene.com/chromatograms/mk6417_e11.zip



[View online »](#)

Restriction Sites: SgfI-MluI

Cloning Scheme:



ACCN: NM_181505

ORF Size: 504 bp

OTI Disclaimer: The molecular sequence of this clone aligns with the gene accession number as a point of reference only. However, individual transcript sequences of the same gene can differ through naturally occurring variations (e.g. polymorphisms), each with its own valid existence. This clone is substantially in agreement with the reference, but a complete review of all prevailing variants is recommended prior to use. [More info](#)

OTI Annotation: This clone was engineered to express the complete ORF with an expression tag. Expression varies depending on the nature of the gene.

Components: The ORF clone is ion-exchange column purified and shipped in a 2D barcoded Matrix tube containing 10ug of transfection-ready, dried plasmid DNA (reconstitute with 100 ul of water).

Reconstitution Method:

1. Centrifuge at 5,000xg for 5min.
2. Carefully open the tube and add 100ul of sterile water to dissolve the DNA.
3. Close the tube and incubate for 10 minutes at room temperature.
4. Briefly vortex the tube and then do a quick spin (less than 5000xg) to concentrate the liquid at the bottom.
5. Store the suspended plasmid at -20°C. The DNA is stable for at least one year from date of shipping when stored at -20°C.

Note: Plasmids are not sterile. For experiments where strict sterility is required, filtration with 0.22um filter is required.

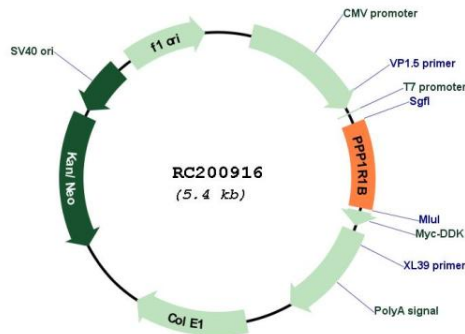
RefSeq: [NM_181505.4](#)

RefSeq Size: 1530 bp

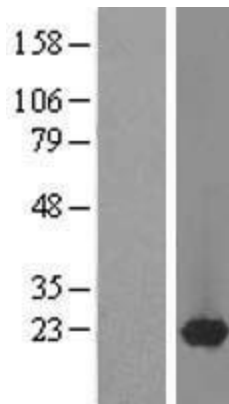
RefSeq ORF: 507 bp

Locus ID: 84152
UniProt ID: [Q9UD71](#)
Cytogenetics: 17q12
Protein Families: Druggable Genome
MW: 18.7 kDa
Gene Summary: This gene encodes a bifunctional signal transduction molecule. Dopaminergic and glutamatergic receptor stimulation regulates its phosphorylation and function as a kinase or phosphatase inhibitor. As a target for dopamine, this gene may serve as a therapeutic target for neurologic and psychiatric disorders. Multiple transcript variants encoding different isoforms have been found for this gene. [provided by RefSeq, Oct 2011]

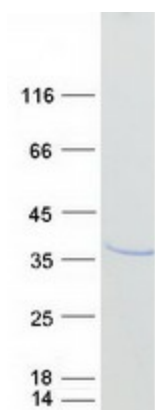
Product images:



Circular map for RC200916



Western blot validation of overexpression lysate (Cat# [LY405677]) using anti-DDK antibody (Cat# [TA50011-100]). Left: Cell lysates from untransfected HEK293T cells; Right: Cell lysates from HEK293T cells transfected with RC200916 using transfection reagent MegaTran 2.0 (Cat# [TT210002]).



Coomassie blue staining of purified PPP1R1B protein (Cat# [TP300916]). The protein was produced from HEK293T cells transfected with PPP1R1B cDNA clone (Cat# RC200916) using MegaTran 2.0 (Cat# [TT210002]).