

## Product datasheet for **RC200911L4V**

### CDC20 (NM\_001255) Human Tagged ORF Clone Lentiviral Particle

#### Product data:

Product Type:	Lentiviral Particles
Product Name:	CDC20 (NM_001255) Human Tagged ORF Clone Lentiviral Particle
Symbol:	CDC20
Synonyms:	bA276H19.3; CDC20A; p55CDC
Mammalian Cell Selection:	Puromycin
Vector:	pLenti-C-mGFP-P2A-Puro (PS100093)
Tag:	mGFP
ACCN:	NM_001255
ORF Size:	1497 bp
ORF Nucleotide Sequence:	The ORF insert of this clone is exactly the same as(RC200911).
OTI Disclaimer:	The molecular sequence of this clone aligns with the gene accession number as a point of reference only. However, individual transcript sequences of the same gene can differ through naturally occurring variations (e.g. polymorphisms), each with its own valid existence. This clone is substantially in agreement with the reference, but a complete review of all prevailing variants is recommended prior to use. <a href="#">More info</a>
OTI Annotation:	This clone was engineered to express the complete ORF with an expression tag. Expression varies depending on the nature of the gene.
RefSeq:	<a href="#">NM_001255.2</a>
RefSeq Size:	1697 bp
RefSeq ORF:	1500 bp
Locus ID:	991
UniProt ID:	<a href="#">Q12834</a>
Cytogenetics:	1p34.2
Domains:	WD40
Protein Families:	Druggable Genome

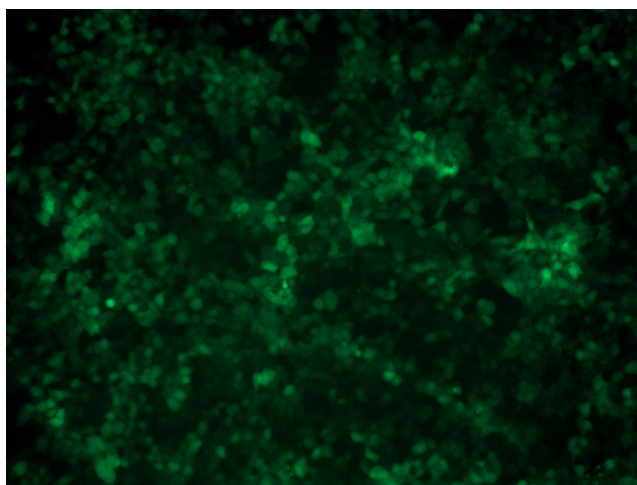

[View online »](#)

**Protein Pathways:** Cell cycle, Oocyte meiosis, Ubiquitin mediated proteolysis

**MW:** 54.7 kDa

**Gene Summary:** CDC20 appears to act as a regulatory protein interacting with several other proteins at multiple points in the cell cycle. It is required for two microtubule-dependent processes, nuclear movement prior to anaphase and chromosome separation. [provided by RefSeq, Jul 2008]

**Product images:**



[RC200911L4] was used to prepare Lentiviral particles using [TR30037] packaging kit. HEK293T cells were transduced with RC200911L4V particle to overexpress human CDC20-mGFP fusion protein.