

Product datasheet for **RC200911**

CDC20 (NM_001255) Human Tagged ORF Clone

Product data:

Product Type:	Expression Plasmids
Product Name:	CDC20 (NM_001255) Human Tagged ORF Clone
Tag:	Myc-DDK
Symbol:	CDC20
Synonyms:	bA276H19.3; CDC20A; p55CDC
Mammalian Cell Selection:	Neomycin
Vector:	pCMV6-Entry (PS100001)
E. coli Selection:	Kanamycin (25 ug/mL)



[View online »](#)

ORF Nucleotide Sequence:

>RC200911 ORF sequence
 Red=Cloning site Blue=ORF Green=Tags(s)

TTTTGTAATACGACTCACTATAGGGCGGCCGGAATTCGTCGACTGGATCCGGTACCGAGGAGATCTGCC
 GCC**GCGATCGCC**

ATGGCACAGTTCGCGTTCGAGAGTGACCTGCCTCGTCTCAGCTGGATGCACCCATCCCAATGCAC
 CCCTGCGCGCTGGCAGCGCAAAGCCAAGGAAGCCGAGCCCGCCCTCACCCATGCGGGCCGCAA
 CCGATCCACAGCGCCGCGCAGGACTCCGGGCCAACTCCTGGCAAATCCAGTTCAGAGTTCAGACCACT
 CCTAGCAAACCTGGCGGTGACCGCTATATCCCCATCGCAGTGCTGCCAGATGGAGGTGGCCAGCTTCC
 TCCTGAGCAAGGAGAACCAGCCTGAAAACAGCCAGACGCCACCAAGAAGGAACATCAGAAAGCCTGGGC
 TTTGAACCTGAACGTTTTGATGTAGAGGAAGCCAAGATCCTTCGGCTCAGTGGAAAACCACAAAATGCG
 CCAGAGGGTTATCAGAACAGACTGAAAGTACTCTACAGCCAAAAGGCCACTCCTGGCTCCAGCCGGAAGA
 CCTGCCGTTACATTCCTCCCTGCCAGACCGTATCCTGGATGCGCCTGAAATCCGAAATGACTATTACCT
 GAACCTTGTGGATTGGAGTCTGGGAATGTACTGGCCGTGGCAGTGGACAACAGTGTGTACCTGTGGAGT
 GCAAGCTCTGGTACATCCTGCAGCTTTTGCAAATGGAGCAGCCTGGGGAATATATATCCTCTGTGGCCT
 GGATCAAAGAGGGCAACTACTTGGCTGTGGCACCAGCAGTGTGAGGTGACGCTATGGGATGTGCAGCA
 GCAGAAACGGCTTCGAAATATGACCAGTCACTCTGCCCGAGTGGGCTCCCTAAGCTGGAACAGCTATATC
 CTGTCCAGTGGTTCACGTTCTGGCCACATCCACCACCATGATGTTTCGGGTAGCAGAACACCATGTGGCCA
 CACTGAGTGGCCACAGCCAGGAAGTGTGTGGGCTGCGCTGGGCCCCAGATGGACGACATTTGGCCAGTGG
 TGGTAATGATAACTTGGTCAATGTGTGGCCTAGTGCTCCTGGAGAGGGTGGCTGGGTTCCCTGCAGACA
 TTCACCAGCATCAAGGGGCTGTCAAGGCCGTAGCATGGTGTCCCTGGCAGTCCAATGTCTGAGTGGCAACAG
 GAGGGGGCACCAGTGTGACACATTCGCATCTGGAATGTGTGCTCTGGGCGCTGTCTGAGTGGCTGGA
 TGCCCATTCAGGTGTGCTCCATCCTCTGGTCTCCCCATTACAAGGAGCTCATCTCAGGCCATGGCTTT
 GCACAGAACCAGCTAGTTATTTGGAAGTACCAACCATGGCCAAGGTGGCTGAACTCAAAGTGCACACAT
 CCCGGTCTGAGTCTGACCATGAGCCAGATGGGGCCACAGTGGCATCCGCAGCAGCAGATGAGACCCT
 GAGGCTATGGCGCTGTTTTGAGTTGGACCCTGCGCGGGCGGGAGCGGGAGAAGGCCAGTGCAGCCAAA
 AGCAGCCTCATCCACCAAGGCATCCGC

ACGCGTACGCGGCCGCTCGAGCAGAAACTCATCTCAGAAGAGGATCTGGCAGCAAATGATATCCTGGATT
 ACAAGGATGACGACGATAAGGTTTAA

Protein Sequence:

>RC200911 protein sequence
 Red=Cloning site Green=Tags(s)

MAQF AFESDLHSLQLDAPIPNAPPARWQRKAKEAAGPAPSPMRAANRSHSAGRTPGRTPGKSSSKVQTT
 PSKPGGDRYIPHRSAAQMEVASFLLSKENQPENSQTPTKKEHQKAWALNLNGFDVEEAKILRLSGKPQNA
 PEGYQNRLLKVLYSQKATPGSSRKTCRYIPSLPDRILDAPDIRNDYYLNLVDWSSGNVLAVALDNSVYLLWS
 ASSGDILQLLQMEQPGEYISSVAWIKEGNLAVGTSSAEVQLWDVQQKRLRNMTSHSARVGSLSWNSYI
 LSSGSRSGIHHHDVRYAEHHVATLSGHSQEVCLRWAPDGRHLASGGNDNLVNVWPSAPGEGGWVPLQT
 FTQHQQAVKAVAWCPWQSNVLATGGGTSRHRIRIWNVCSGACLSAVDAHSQVCSILWSPHYKELISGHGF
 AQNQLVIWKYPTMAKVAELKGHTSRVLSLTMSPDGATVASAAADETLRLWRCFELDPARRREREKASAAK
 SSLIHQIR

TRTRPLEQKLISEEDLAANDILDYKDDDDKV

Chromatograms:

https://cdn.origene.com/chromatograms/mk6153_h05.zip

Restriction Sites:

Sgfl-Mlul

Cloning Scheme:



ACCN: NM_001255

ORF Size: 1497 bp

OTI Disclaimer: The molecular sequence of this clone aligns with the gene accession number as a point of reference only. However, individual transcript sequences of the same gene can differ through naturally occurring variations (e.g. polymorphisms), each with its own valid existence. This clone is substantially in agreement with the reference, but a complete review of all prevailing variants is recommended prior to use. [More info](#)

OTI Annotation: This clone was engineered to express the complete ORF with an expression tag. Expression varies depending on the nature of the gene.

Components: The ORF clone is ion-exchange column purified and shipped in a 2D barcoded Matrix tube containing 10ug of transfection-ready, dried plasmid DNA (reconstitute with 100 ul of water).

- Reconstitution Method:
1. Centrifuge at 5,000xg for 5min.
 2. Carefully open the tube and add 100ul of sterile water to dissolve the DNA.
 3. Close the tube and incubate for 10 minutes at room temperature.
 4. Briefly vortex the tube and then do a quick spin (less than 5000xg) to concentrate the liquid at the bottom.
 5. Store the suspended plasmid at -20°C. The DNA is stable for at least one year from date of shipping when stored at -20°C.

RefSeq: [NM_001255.3](#)

RefSeq Size: 1697 bp

RefSeq ORF: 1500 bp

Locus ID: 991

UniProt ID: [Q12834](#)

Cytogenetics: 1p34.2

Domains: WD40

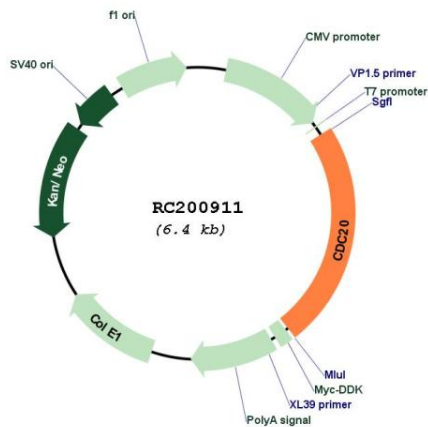
Protein Families: Druggable Genome

Protein Pathways: Cell cycle, Oocyte meiosis, Ubiquitin mediated proteolysis

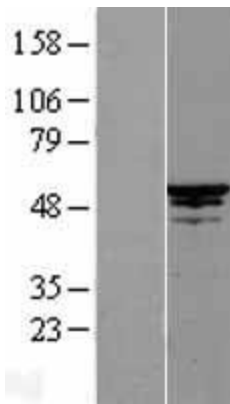
MW: 54.7 kDa

Gene Summary: CDC20 appears to act as a regulatory protein interacting with several other proteins at multiple points in the cell cycle. It is required for two microtubule-dependent processes, nuclear movement prior to anaphase and chromosome separation. [provided by RefSeq, Jul 2008]

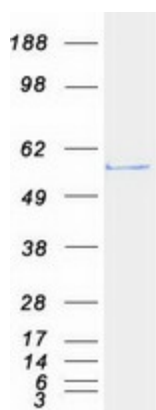
Product images:



Circular map for RC200911



Western blot validation of overexpression lysate (Cat# [LY400503]) using anti-DDK antibody (Cat# [TA50011-100]). Left: Cell lysates from untransfected HEK293T cells; Right: Cell lysates from HEK293T cells transfected with RC200911 using transfection reagent MegaTran 2.0 (Cat# [TT210002]).



Coomassie blue staining of purified CDC20 protein (Cat# [TP300911]). The protein was produced from HEK293T cells transfected with CDC20 cDNA clone (Cat# RC200911) using MegaTran 2.0 (Cat# [TT210002]).