

## Product datasheet for RC200907

### GNB1 (NM\_002074) Human Tagged ORF Clone

#### Product data:

Product Type:	Expression Plasmids
Product Name:	GNB1 (NM_002074) Human Tagged ORF Clone
Tag:	Myc-DDK
Symbol:	GNB1
Synonyms:	MDS; MRD42
Mammalian Cell Selection:	Neomycin
Vector:	pCMV6-Entry (PS100001)
E. coli Selection:	Kanamycin (25 ug/mL)
ORF Nucleotide Sequence:	>RC200907 ORF sequence Red=Cloning site Blue=ORF Green=Tags(s)

TTTTGTAATACGACTCACTATAGGGCGGCCGGAATTCGTCGACTGGATCCGGTACCGAGGAGATCTGCC  
GCC**CGATCGCC**

ATGAGTGAGCTTGACCAGTTACGGCAGGAGGCCGAGCAACTTAAGAACCAGATTCGAGACGCCAGGAAAG  
CATGTGCAGATGCAACTCTCTCAGATCACAACAACATCGACCCAGTGGGAAGAATCCAAATGCGCAC  
GAGGAGGACACTGCGGGGCACCTGGCCAAGATCTACGCCATGCACTGGGGCACAGACTCCAGGCTTCTC  
GTCAGTGCCTCGCAGGATGGTAACTTATCATCTGGGACAGCTACACCACCAACAAGTCCACGCCATCC  
CTCTGCGCTCCTCTGGGTCATGACCTGTGCATATGCCCTTCTGGGAATATGTGGCCTCGGGTGGCT  
GGATAACATTTGCTCCATTTACAATCTGAAAACCTCGTGAGGGGAACGTGCGCGTGAGTCGTGAGCTGGCA  
GGACACACAGGTTACCTGTCTGCTGCCGATTCCTGGATGACAATCAGATCGTCACCAGCTCTGGAGACA  
CCACGTGTGCCCTGTGGGACATCGAGACCGGCCAGCAGACGACCAGTTCACCGGACACACTGGAGATGT  
CATGAGCCTTTCTTGTCTGCTGACACCAGACTGTTCTGCTCTGGTGCTTGATGCTTCAGCCAAACTC  
TGGGATGTGCGAGAAGGCATGTGCCGCGCAGACCTTCACTGGCCACGAGTCTGACATCAATGCCATTTGCT  
TCTTTCCAAATGGCAATGCATTTGCCACTGGCTCAGACGACGCCACCTGCAGGCTGTTTGACCTTCGTGC  
TGACCAGGAGCTCATGACTTACTCCCATGACAACATCATCTGCGGGATCACCTCTGTCTCCTTCTCCAAG  
AGCGGGCGCCTCCTCCTTGTGGGTACGACGACTTCAACTGCAACGTCTGGGATGCACTCAAAGCCGACC  
GGCAGGTGTCTTGGCTGGGCATGACAACCGCGTCAGCTGCCTGGGCGTGACTGACGATGGCATGGCTGT  
GGCGACAGGGTCTGGGATAGCTTCTCAAGATCTGGAAC

**ACGCGT**ACGCGGCCGCTCGAGCAGAAACTCATCTCAGAAGAGGATCTGGCAGCAAATGATATCCTGGATT  
ACAAGGATGACGACGATAAGGTTTAA



[View online »](#)

**Protein Sequence:** >RC200907 protein sequence  
Red=Cloning site Green=Tags(s)

MSELDQLRQAEQLKNQIRDARKACADATLSQITNNIDPVGRIQMRTTRTLRGHLAKIYAMHWGTD S RLL  
 VSASQDGKLI IWDSYTTNKVHAIPLRSSWVMTCA YAPSGNYVACGGLDNICSIYNLKTREGNVRVSRELA  
 GHTGYLSCCRFLDDNQIVTSSGDTT CALWDIETGQQTTF TGTGTDVMSLSLAPDTRLFVSGACDASAKL  
 WDVREGMCRQTF TGHESDINAICFFPNGNAFATGSDDATCRLFDLRADQELMTYSHDNIICGITSVSFSK  
 SGRLLL AGYDDFNCNVWDALKADRAGVL AGHDNRV SCLGVTDDGMAVATGSWDSFLKIWN

TRTRPLEQKLISEEDLAANDILDYKDDDDKV

**Chromatograms:** [https://cdn.origene.com/chromatograms/mk6153\\_e11.zip](https://cdn.origene.com/chromatograms/mk6153_e11.zip)

**Restriction Sites:** SgfI-MluI

**Cloning Scheme:**



**ACCN:** NM\_002074

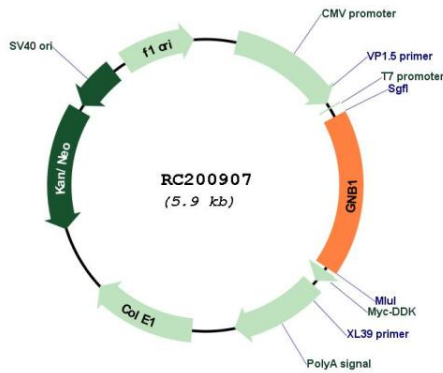
**ORF Size:** 1020 bp

**OTI Disclaimer:** Due to the inherent nature of this plasmid, standard methods to replicate additional amounts of DNA in E. coli are highly likely to result in mutations and/or rearrangements. Therefore, OriGene does not guarantee the capability to replicate this plasmid DNA. Additional amounts of DNA can be purchased from OriGene with batch-specific, full-sequence verification at a reduced cost. Please contact our customer care team at [custsupport@origene.com](mailto:custsupport@origene.com) or by calling 301.340.3188 option 3 for pricing and delivery.

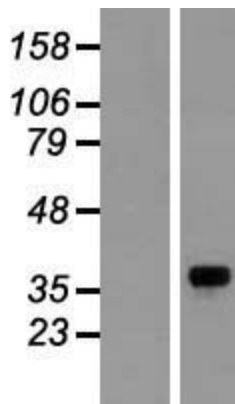
The molecular sequence of this clone aligns with the gene accession number as a point of reference only. However, individual transcript sequences of the same gene can differ through naturally occurring variations (e.g. polymorphisms), each with its own valid existence. This clone is substantially in agreement with the reference, but a complete review of all prevailing variants is recommended prior to use. [More info](#)

<b>OTI Annotation:</b>	This clone was engineered to express the complete ORF with an expression tag. Expression varies depending on the nature of the gene.
<b>Components:</b>	The ORF clone is ion-exchange column purified and shipped in a 2D barcoded Matrix tube containing 10ug of transfection-ready, dried plasmid DNA (reconstitute with 100 ul of water).
<b>Reconstitution Method:</b>	<ol style="list-style-type: none"><li>1. Centrifuge at 5,000xg for 5min.</li><li>2. Carefully open the tube and add 100ul of sterile water to dissolve the DNA.</li><li>3. Close the tube and incubate for 10 minutes at room temperature.</li><li>4. Briefly vortex the tube and then do a quick spin (less than 5000xg) to concentrate the liquid at the bottom.</li><li>5. Store the suspended plasmid at -20°C. The DNA is stable for at least one year from date of shipping when stored at -20°C.</li></ol>
<b>RefSeq:</b>	<a href="#">NM_002074.5</a>
<b>RefSeq Size:</b>	3200 bp
<b>RefSeq ORF:</b>	1023 bp
<b>Locus ID:</b>	2782
<b>UniProt ID:</b>	<a href="#">P62873</a>
<b>Cytogenetics:</b>	1p36.33
<b>Domains:</b>	WD40
<b>Protein Pathways:</b>	Chemokine signaling pathway, Taste transduction
<b>MW:</b>	37.4 kDa
<b>Gene Summary:</b>	Heterotrimeric guanine nucleotide-binding proteins (G proteins), which integrate signals between receptors and effector proteins, are composed of an alpha, a beta, and a gamma subunit. These subunits are encoded by families of related genes. This gene encodes a beta subunit. Beta subunits are important regulators of alpha subunits, as well as of certain signal transduction receptors and effectors. Alternative splicing results in multiple transcript variants. [provided by RefSeq, Sep 2013]

Product images:



Circular map for RC200907



Western blot validation of overexpression lysate (Cat# [LY419547]) using anti-DDK antibody (Cat# [TA50011-100]). Left: Cell lysates from untransfected HEK293T cells; Right: Cell lysates from HEK293T cells transfected with RC200907 using transfection reagent MegaTran 2.0 (Cat# [TT210002]).