

Product datasheet for RC200905

NPRL3 (NM_001039476) Human Tagged ORF Clone

Product data:

Product Type:	Expression Plasmids
Product Name:	NPRL3 (NM_001039476) Human Tagged ORF Clone
Tag:	Myc-DDK
Symbol:	NPRL3
Synonyms:	C16orf35; CGTHBA; FFEVF3; HS-40; MARE; NPR3; RMD11
Mammalian Cell Selection:	Neomycin
Vector:	pCMV6-Entry (PS100001)
E. coli Selection:	Kanamycin (25 ug/mL)
ORF Nucleotide Sequence:	>RC200905 ORF sequence Red=Cloning site Blue=ORF Green=Tags(s)

TTTTGTAATACGACTCACTATAGGGCGGCCGGAATTCGTCGACTGGATCCGGTACCGAGGAGATCTGCC
GCC**CGATCGCC**

ATGGCTGATGAAATGAAGGTCCTCAGTCCCCATTCCATCACATCCTGCCAAGTGCAAGCTGGCCAGGG
ACCTCAAGGAAGCTTATGACAGCCTGTGCACGTCGGGCGTAGTTCGGCTTCACATCAACAGCTGGCTGGA
GGTGAGCTTCTGCCTGCCCCACAAGATCCACTATGCGGCCTCCAGTCTGATCCCCCAGAGGCCATCGAA
CGGAGCCTGAAAGCCATCCGCCCTACCATGCCCTGCTGCTCAGTGATGAGAAGTCTTGCTGGGTG
AGTTCCTATTGACTGCTCCCCTGCCCTAGTGC GGGTGATCAAGACCACATCTGCTGTGAAGAACCTGCA
GCAGTAGCCCAAGATGCGGACCTGGCCTTGCTGCAGGTTTTCCAGCTTGCAAGCTCATCTGGTGTACTGG
GGCAAGGCCATCATCTACCCGCTGTGTGAGAACACGCTCTACATGCTGTCTCCCAATGCCAGCGTAT
GTCTGTACTCCCCGCTGGCCGAGCAGTTCTCCACCAGTCCCATCTCATGACCTGCCGTCGGTCTTTGC
CAAGTTCTCCTTGCCGGTCTCCTTGTCAGAAATTTAGGAATCCCCTGGCCCCGCTGTGCAGGAGACCCAG
CTCATCCAGATGGTGGTGTGGATGCTGCAGCGCCGGCTTCTCATCCAGCTGCACACCTATGTCTGCCTGA
TGGCCTCACCCAGCGAGGAGGAGCCCGTCCGCGAGAGGACGACGTCCTTCACTGCCCGGTTCGGCGG
TCGCAGCCTCAGCACGCCAACGCCCTCAGCTTTGGCTCCCCAACAGCAGCGATGACATGACCCCTCAC
AGCCCCAGCATGGACAACCTCCAGCGCAGACTACTTCCAGCGGGGACTCGCCACTGAACCCAGAGGATGA
CGGAGAACCTGCTGGCCAGCCTGTGCGAGCATGAACGCGAGCCATCCTCAGTGTACCCGAGCCAGAA
CCCTGAGGACCTCCGCATGTTTGCCAGGCTCCTTCACTACTTCCGCGGCCGCCACCCTGGAGGAGATT
ATGTACAACGAGAACACGCGCGCTCCCAGCTGCTCATGCTGTTTGACAAGTTCCGAGCGTGTGGTGG
TGACCACCACGAGGACCCTGTCATTGCCGCTTCCAGGCTCTGCTCCCC

ACGCGTACGCGGCCGCTCGAGCAGAACTCATCTCAGAAGAGGATCTGGCAGCAATGATATCCTGGATT
ACAAGGATGACGACGATAAGGTTTAA



[View online »](#)

Protein Sequence: >RC200905 protein sequence
Red=Cloning site Green=Tags(s)

MADGNEGQSPFHHLIPKCKLARDLKEAYDSLCTSGVVRLHINSWLEVSFCLPHKIHYAASSLIPPEAIE
 RSLKAIRPYHALLLL SDEKSLLGELPIDCSPALVRVIKTTSAVKNLQQLAQDADLALLQVFQLA AHLVYW
 GKAI I IYPLCENNVYMLSPNASVCLYSP LAEQFSHQFP SHDLPSVLAKFSLPVSLSEFRNPLAPAVQETQ
 LIQM VVWMLQRLLIQLHTYVCLMASPSEEEPRPREDDVPFTARVGG RSLSTPNALSFGSPTSSDDMTLT
 SPSMDNSSAELLPSGDSPLNQRMTENLLASLSEHERAAILSVPA AQNPEDLRMFARLLHYFRGRHHEEII
 MYNENTRRSQLMLFDKFRSVLVVTTHEDPVIAVFQALLP

TRTRPLEQKLISEEDLAANDILDYKDDDDKV

Chromatograms: https://cdn.origene.com/chromatograms/mk6385_c05.zip

Restriction Sites: SgfI-MluI

Cloning Scheme:



* The last codon before the Stop codon of the ORF

ACCN: NM_001039476

ORF Size: 1170 bp

OTI Disclaimer: The molecular sequence of this clone aligns with the gene accession number as a point of reference only. However, individual transcript sequences of the same gene can differ through naturally occurring variations (e.g. polymorphisms), each with its own valid existence. This clone is substantially in agreement with the reference, but a complete review of all prevailing variants is recommended prior to use. [More info](#)

OTI Annotation: This clone was engineered to express the complete ORF with an expression tag. Expression varies depending on the nature of the gene.

Components: The ORF clone is ion-exchange column purified and shipped in a 2D barcoded Matrix tube containing 10ug of transfection-ready, dried plasmid DNA (reconstitute with 100 ul of water).

Reconstitution Method:

1. Centrifuge at 5,000xg for 5min.
2. Carefully open the tube and add 100ul of sterile water to dissolve the DNA.
3. Close the tube and incubate for 10 minutes at room temperature.
4. Briefly vortex the tube and then do a quick spin (less than 5000xg) to concentrate the liquid at the bottom.
5. Store the suspended plasmid at -20°C. The DNA is stable for at least one year from date of shipping when stored at -20°C.

RefSeq: [NM_001039476.2](#)

RefSeq Size: 2840 bp

RefSeq ORF: 1173 bp

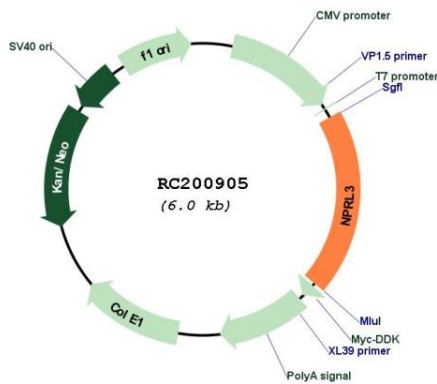
Locus ID: 8131

Cytogenetics: 16p13.3

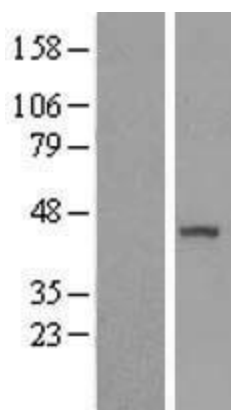
MW: 43.6 kDa

Gene Summary: The function of the encoded protein is not known. [provided by RefSeq, Aug 2011]

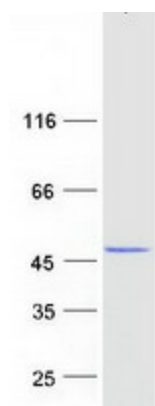
Product images:



Circular map for RC200905



Western blot validation of overexpression lysate (Cat# [LY422054]) using anti-DDK antibody (Cat# [TA50011-100]). Left: Cell lysates from untransfected HEK293T cells; Right: Cell lysates from HEK293T cells transfected with RC200905 using transfection reagent MegaTran 2.0 (Cat# [TT210002]).



Coomassie blue staining of purified NPRL3 protein (Cat# [TP300905]). The protein was produced from HEK293T cells transfected with NPRL3 cDNA clone (Cat# RC200905) using MegaTran 2.0 (Cat# [TT210002]).