

Product datasheet for **RC200900**

SSU72 (NM_014188) Human Tagged ORF Clone

Product data:

Product Type:	Expression Plasmids
Product Name:	SSU72 (NM_014188) Human Tagged ORF Clone
Tag:	Myc-DDK
Symbol:	SSU72
Synonyms:	HSPC182; PNAS-120
Mammalian Cell Selection:	Neomycin
Vector:	pCMV6-Entry (PS100001)
E. coli Selection:	Kanamycin (25 ug/mL)
ORF Nucleotide Sequence:	>RC200900 ORF sequence Red=Cloning site Blue=ORF Green=Tags(s)

TTTTGTAATACGACTCACTATAGGGCGGCCGGAATTCGTCGACTGGATCCGGTACCGAGGAGATCTGCC
 GCC**CGATCGCC**

ATGCCGTCGTCCTCCCGCTGCGGGTGGCGGTGGTGTGCTCGAGCAACCAGAACCGGAGCATGGAGGCGCACA
 ACATCCTCAGCAAACGGGGATTACGCGTCCGATCCTTTGGAACAGGGACTCACGTGAAGCTTCCAGGACC
 AGCTCCCAGACAAGCCCAATGTTTATGATTTCAAACACATATGACCAGATGTACAATGATCTTCTTAGG
 AAAGACAAAGAACTCTATACACAGAATGGGATTTACATATGCTGGACAGAAATAAGAGAATCAAGCCCC
 GGCCAGAAAGATTCCAGAACTGCAAAGACCTGTTTATCTGATCTCCTCACTTGCGAAGAGAGAGTGTATGA
 CCAGGTGGTGGAAAGATCTGAATTCCAGAGAACAGGAGACCTGCCAGCCCGTGACGTGGTCAATGTGGAC
 ATCCAGGACAACCACGAGGAGGCCACCCTGGGGCGTCTTCTCATCTGTGAGCTCTGCCAGTGTATCCAGC
 ACACGGAAGACATGGAGAACGAGATCGACGAGCTGCTGCAGGAGTTTCGAGGAGAAGAGTGCCCGCACCTT
 TCTGCACACCGTCTGCTTCTAC

ACGCGTACGCGGCCGCTCGAGCAGAACTCATCTCAGAAGAGGATCTGGCAGCAAATGATATCCTGGATT
 ACAAGGATGACGACGATAAGGTTTAA

Protein Sequence:	>RC200900 protein sequence Red=Cloning site Green=Tags(s)
-------------------	--

MPSSPLRVAVVCSSNQNRSM EAHNILSKRGFSVRSFGTGHVKLP GPAPDKPNVYDFKTTYDQMYNDLLR
 KDELYTQNGILHMLDRNKRIKPRPERFQNKDLFDLILTCEERYVDQVVEDLNSREQETCQPVHVVNVD
 IQDNHEEATLGAFLICELCQCIQHTEDMENEIDELLQEFEEKSGRTFLHTVCFY

TRTRPLEQKLISEEDLAANDILDYKDDDDKV


[View online »](#)

Chromatograms: https://cdn.origene.com/chromatograms/mk6213_c01.zip

Restriction Sites: SgfI-MluI

Cloning Scheme:



ACCN: NM_014188

ORF Size: 582 bp

OTI Disclaimer: The molecular sequence of this clone aligns with the gene accession number as a point of reference only. However, individual transcript sequences of the same gene can differ through naturally occurring variations (e.g. polymorphisms), each with its own valid existence. This clone is substantially in agreement with the reference, but a complete review of all prevailing variants is recommended prior to use. [More info](#)

OTI Annotation: This clone was engineered to express the complete ORF with an expression tag. Expression varies depending on the nature of the gene.

Components: The ORF clone is ion-exchange column purified and shipped in a 2D barcoded Matrix tube containing 10ug of transfection-ready, dried plasmid DNA (reconstitute with 100 ul of water).

Reconstitution Method:

1. Centrifuge at 5,000xg for 5min.
2. Carefully open the tube and add 100ul of sterile water to dissolve the DNA.
3. Close the tube and incubate for 10 minutes at room temperature.
4. Briefly vortex the tube and then do a quick spin (less than 5000xg) to concentrate the liquid at the bottom.
5. Store the suspended plasmid at -20°C. The DNA is stable for at least one year from date of shipping when stored at -20°C.

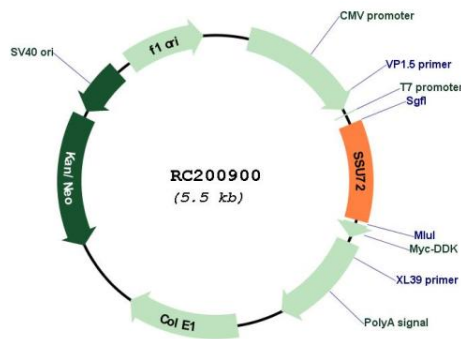
Note: Plasmids are not sterile. For experiments where strict sterility is required, filtration with 0.22um filter is required.

RefSeq: [NM_014188.1](#)

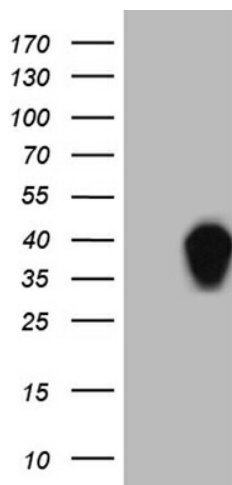
RefSeq Size: 1319 bp

RefSeq ORF:	585 bp
Locus ID:	29101
UniProt ID:	Q9NP77
Cytogenetics:	1p36.33
Domains:	Ssu72
Protein Families:	Druggable Genome
MW:	22.6 kDa
Gene Summary:	Protein phosphatase that catalyzes the dephosphorylation of the C-terminal domain of RNA polymerase II. Plays a role in RNA processing and termination. Plays a role in pre-mRNA polyadenylation via its interaction with SYMPK.[UniProtKB/Swiss-Prot Function]

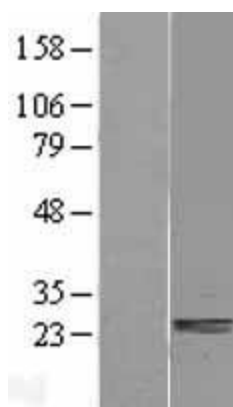
Product images:



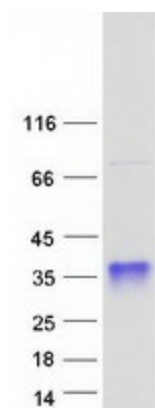
Circular map for RC200900



HEK293T cells were transfected with the pCMV6-ENTRY control (Cat# [PS100001], Left lane) or pCMV6-ENTRY SSU72 (Cat# RC200900, Right lane) cDNA for 48 hrs and lysed. Equivalent amounts of cell lysates (5 ug per lane) were separated by SDS-PAGE and immunoblotted with anti-SSU72 (Cat# [TA809190])(1:2000). Positive lysates [LY415450] (100ug) and [LC415450] (20ug) can be purchased separately from OriGene.



Western blot validation of overexpression lysate (Cat# [LY415450]) using anti-DDK antibody (Cat# [TA50011-100]). Left: Cell lysates from untransfected HEK293T cells; Right: Cell lysates from HEK293T cells transfected with RC200900 using transfection reagent MegaTran 2.0 (Cat# [TT210002]).



Coomassie blue staining of purified SSU72 protein (Cat# [TP300900]). The protein was produced from HEK293T cells transfected with SSU72 cDNA clone (Cat# RC200900) using MegaTran 2.0 (Cat# [TT210002]).