

Product datasheet for **RC200890**

DPCD (NM_015448) Human Tagged ORF Clone

Product data:

Product Type: Expression Plasmids
Product Name: DPCD (NM_015448) Human Tagged ORF Clone
Tag: Myc-DDK
Symbol: DPCD
Mammalian Cell Selection: Neomycin
Vector: pCMV6-Entry (PS100001)
E. coli Selection: Kanamycin (25 ug/mL)
ORF Nucleotide Sequence: >RC200890 ORF sequence
 Red=Cloning site Blue=ORF Green=Tags(s)

TTTTGTAATACGACTCACTATAGGGCGGCCGGAATTCGTCGACTGGATCCGGTACCGAGGAGATCTGCC
 GCC**CGATCGCC**

ATGGCGGTGACGGGCTGGTTGGAGAGTCTGCGGACAGCCAGAACTGCGCTGCTGCAGGACGGGAGAA
 GGAAGGTTCACTATTTATTTCCAGACGGCAAGGAAATGGCTGAAGAATATGACGAGAAGACGAGTGAAC
 ACTTGTGAGAAAGTGGCGTGTGAAAAGTGCCCTGGGAGCCATGGGCCAGTGGCAGCTTGAAGTAGGAGAC
 CCAGCGCCCTAGGAGCAGGGAACCTGGGGCTGAACATCAAGGAAAGCAATGCCAATCCTATCTTCA
 TGCGCAAGGACACCAAGATGAGTTTCCAGTGGCGGATTGAAACCTCCCTATCCTAAGGATGTCTATAG
 TGTCTCTGTGGACGAGAAGGAGCGCTGCATCATTGTGAGAACCAACCAAGAAGTACTACAAGAAGTTT
 TCCATTCTGATCTAGATAGACACCAGTACCTCTGGATGACGCCCTTGCTGAGCTTTGCCACGCCAACT
 GCACCCTGATCATCTCTTACCAGAAGCCAAAGGAGTTGTGGTGGCCGAGTCTGAGCTACAGAAGGAACT
 AAAGAAGGTGAAGACAGCCACAGCAACGATGGGGACTGCAAGACCCAG

ACGCGTACGCGGCCGCTCGAGCAGAACTCATCTCAGAAGAGGATCTGGCAGCAAATGATATCCTGGATT
 ACAAGGATGACGACGATAAGGTTTAA

Protein Sequence: >RC200890 protein sequence
 Red=Cloning site Green=Tags(s)

MAVTGWLESLRTAQKTALLQDGRKRVHYLFPDGKEMAEYDEKTSSELLVRKWRVKSALGAMGQWQLEVG
 PAPLGAGNLGPELIKESNANPIFMRKDTKMSFQWRIRNLPYPKDVYSVSDQKERCIIVRTTNKKYKKF
 SIPDLDRHQLPLDDALLSFAHANCTLIISYQPKKEVVVAESELQKELKKVKTAKSNDGDCKTQ

TRTRPLEQKLISEEDLAANDILDYKDDDDKV

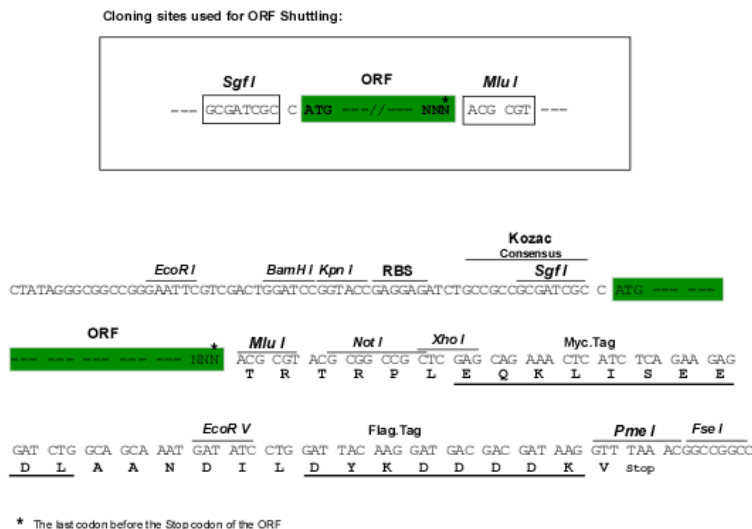
Chromatograms: https://cdn.origene.com/chromatograms/mk6557_e06.zip



[View online »](#)

Restriction Sites: Sgfl-MluI

Cloning Scheme:



ACCN: NM_015448

ORF Size: 609 bp

OTI Disclaimer: The molecular sequence of this clone aligns with the gene accession number as a point of reference only. However, individual transcript sequences of the same gene can differ through naturally occurring variations (e.g. polymorphisms), each with its own valid existence. This clone is substantially in agreement with the reference, but a complete review of all prevailing variants is recommended prior to use. [More info](#)

OTI Annotation: This clone was engineered to express the complete ORF with an expression tag. Expression varies depending on the nature of the gene.

Components: The ORF clone is ion-exchange column purified and shipped in a 2D barcoded Matrix tube containing 10ug of transfection-ready, dried plasmid DNA (reconstitute with 100 ul of water).

Reconstitution Method:

1. Centrifuge at 5,000xg for 5min.
2. Carefully open the tube and add 100ul of sterile water to dissolve the DNA.
3. Close the tube and incubate for 10 minutes at room temperature.
4. Briefly vortex the tube and then do a quick spin (less than 5000xg) to concentrate the liquid at the bottom.
5. Store the suspended plasmid at -20°C. The DNA is stable for at least one year from date of shipping when stored at -20°C.

Note: Plasmids are not sterile. For experiments where strict sterility is required, filtration with 0.22um filter is required.

RefSeq: [NM_015448.3](#)

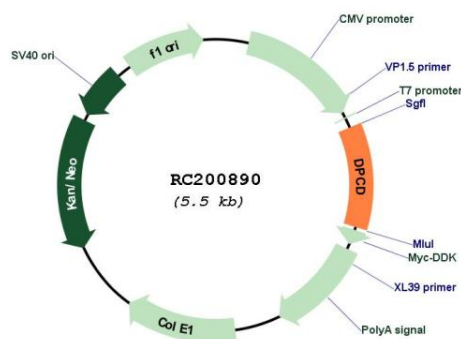
RefSeq Size: 858 bp

RefSeq ORF: 612 bp

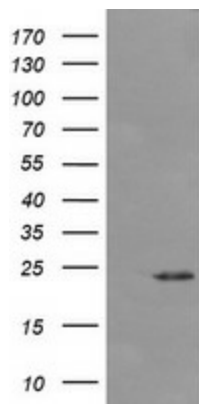
Locus ID: 25911
UniProt ID: [Q9BVM2](#)
Cytogenetics: 10q24.32
MW: 23.2 kDa

Gene Summary: This gene in mouse encodes a protein that may be involved in the generation and maintenance of ciliated cells. In mouse, expression of this gene increases during ciliated cell differentiation, and disruption of this gene has been linked to primary ciliary dyskinesia. [provided by RefSeq, Jul 2016]

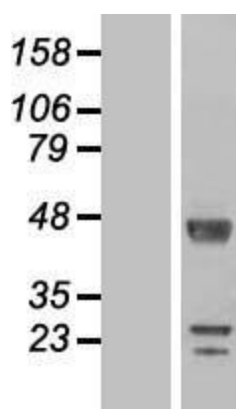
Product images:



Circular map for RC200890



HEK293T cells were transfected with the pCMV6-ENTRY control (Cat# [PS100001], Left lane) or pCMV6-ENTRY DPCD (Cat# RC200890, Right lane) cDNA for 48 hrs and lysed. Equivalent amounts of cell lysates (5 ug per lane) were separated by SDS-PAGE and immunoblotted with anti-DPCD (Cat# [TA505898]). Positive lysates [LY414547] (100ug) and [LC414547] (20ug) can be purchased separately from OriGene.



Western blot validation of overexpression lysate (Cat# [LY414547]) using anti-DDK antibody (Cat# [TA50011-100]). Left: Cell lysates from untransfected HEK293T cells; Right: Cell lysates from HEK293T cells transfected with RC200890 using transfection reagent MegaTran 2.0 (Cat# [TT210002]).



Coomassie blue staining of purified DPCD protein (Cat# [TP300890]). The protein was produced from HEK293T cells transfected with DPCD cDNA clone (Cat# RC200890) using MegaTran 2.0 (Cat# [TT210002]).