

Product datasheet for **RC200888**

XPNPEP3 (NM_022098) Human Tagged ORF Clone

Product data:

Product Type:	Expression Plasmids
Product Name:	XPNPEP3 (NM_022098) Human Tagged ORF Clone
Tag:	Myc-DDK
Symbol:	XPNPEP3
Synonyms:	APP3; ICP55; NPHPL1
Mammalian Cell Selection:	Neomycin
Vector:	pCMV6-Entry (PS100001)
E. coli Selection:	Kanamycin (25 ug/mL)



[View online »](#)

ORF Nucleotide Sequence:

>RC200888 ORF sequence
 Red=Cloning site Blue=ORF Green=Tags(s)

TTTTGTAATACGACTCACTATAGGGCGGCCGGAATTCGTCGACTGGATCCGGTACCGAGGAGATCTGCC
 GCC**CGGATCGCC**

ATGCCTTGGCTGCTCTCAGCCCCAAGCTGGTTCCCGCTGTAGCAAACGTCGCGGCTCTCAGGATGTA
 TGTGTGTTACACAGCAAGGTACTCCCTCAGCCTGTCCAGAAAAGGAGATTCCAAACCGATACTTAGG
 CCAGCCCAGCCCCTTTACACACCACACCTCCTCAGACCAGGGGAGGTAAGTCCAGGACTATCTCAGGTG
 GAATATGCACTTCGCAGACACAACTAATGTCTCTGATCCAGAAGGAAGCTCAAGGGCAGAGTGGGACAG
 ACCAGACAGTGGTTGTGCTCTCAACCCTACATACTACATGAGCAACGATATTCCTATACTTTCCACCA
 AGACAACAATTCCTGTACCTATGTGGATTCCAAGAGCCTGATAGCATTCTTGCCTTCAGAGCCTCCCT
 GGCAAACAATTACCATCACACAAAGCCATACTTTTGTGCCTCGGCGAGATCCCAGTCGAGAAGTCTGGG
 ATGGTCCGCGATCTGGCACTGATGGAGCAATAGCTCTAACTGGAGTAGACGAAGCCTATACGCTAGAAGA
 ATTTCAACATCTTCTACCAAAAATGAAAGCTGAGACGAACATGGTTTGGTATGACTGGATGAGGCCCTCA
 CATGCACAGCTTCACTCTGACTATATGCAGCCCCTGACTGAGGCCAAAGCCAAGGACAAGAAAGGTTCC
 GGGGTGTTTCAGCAGCTGATACAGCGCCTCCGGCTGATCAAGTCTCCTGCAGAAAATGAACGAATGCAGAT
 TGCTGGGAAGCTGACATCACAGGCTTTCATAGAAAACCATGTTACCAGTAAAGCCCTGTGGAAGAAGCC
 TTTCTTTATGCTAAGTTTGAATTTGAATGCCGGCTCGTGGCGCAGACATTTTAGCCTATCCACCTGTGG
 TGGCTGGTGGTAAATCGGTCAAACACTTTGCACTATGTGAAAAATAATCAACTCATCAAGGATGGGAAAT
 GGTGCTTCTGGATGGAGTTGTGAGTCTTCTGCTATGTGAGTGACATCACACGTACGTGGCCAGTCAAT
 GGCAGGTTCAACCCACCTCAGGCAGAACTCTATGAAGCCGTTCTAGAGATCCAAAGAGATTGTTTGGCCC
 TCTGCTCCCTGGGACAAGCTTGGAGAACATCTACAGCATGATGCTGACCCTGATAGGACAGAAGCTTAA
 AGACTTGGGGATCATGAAGAACATTAAGGAAAATAATGCCTTCAAGGCTGCTCGAAAATACTGTCCATCAT
 CATGTTGGCCACTACCTCGGGATGGATGTCATGACACTCCAGACATGCCCGTTCCCTCCCTCTGCAGC
 CTGGGATGGTAATCACAATTGAGCCCGCATTTATATTCCAGAGGATGACAAAAGTGCCCCAGAGAAGTT
 TCGGGGTCTTGGTGTACGAATTGAGGATGATGTAGTGGTACTCAGGACTCACCTTTCATCTTTCTGCA
 GACTGTCCCAAAGAGATGAATGACATTGAACAGATATGCAGCCAGGCTTCT

ACGCGTACGCGGCCGCTCGAGCAGAAACTCATCTCAGAAGAGGATCTGGCAGCAAATGATATCCTGGATT
 ACAAGGATGACGACGATAAGGTTTAA

Protein Sequence:

>RC200888 protein sequence
 Red=Cloning site Green=Tags(s)

MPWLLSAPKLVAVANVRGLSGCMLCSQRRYSLOPVPERRIPNRYLGQSPFTHPHLLRPGEVTPGLSQV
 EYALRRHKLMSLIQKEAQGQSGTDQTVVVL SNPTYYSNDIPYTFHQDNNFLYLCGFQEPDSILVLQSLP
 GKQLPSHKAILFVPRRDP SRELWDGPRSGTDGAIALTGVDEAYTLEEFQHLLPKMKAETNMVWYDWMRPS
 HAQLHSDYMQPLTEAKAKSKNKVRGVQQLIQRRLIKSPAIEIEMQIAGKLSQAFIETMFTSKAPVEEA
 FLYAKFEFECRARGADILAYPPVVAGGNRSNTLHYVKNNQLIKDGEMVLLDGGCESSCYVSDITRTWPVN
 GRFTAPQAELEYAVLEIQRDCLALCFPGTSLNIYSMMLTLIGQKLDL GIMKNIKENNAFKAARKYCPH
 HVGHYLGMDVHDPDMPRSLPLQPGMVITIEPGIYIPEDDKDAPEKFRGLGVRIEDDVVVTQDSPFILSA
 DCPKEMNDIEIQCSQAS

TRTRPLEQKLI SEEDLAANDILDYKDDDDKV

Chromatograms:

https://cdn.origene.com/chromatograms/mk6152_d05.zip

Restriction Sites:

Sgfl-MluI

Cloning Scheme:


ACCN: NM_022098

ORF Size: 1521 bp

OTI Disclaimer: The molecular sequence of this clone aligns with the gene accession number as a point of reference only. However, individual transcript sequences of the same gene can differ through naturally occurring variations (e.g. polymorphisms), each with its own valid existence. This clone is substantially in agreement with the reference, but a complete review of all prevailing variants is recommended prior to use. [More info](#)

OTI Annotation: This clone was engineered to express the complete ORF with an expression tag. Expression varies depending on the nature of the gene.

Components: The ORF clone is ion-exchange column purified and shipped in a 2D barcoded Matrix tube containing 10ug of transfection-ready, dried plasmid DNA (reconstitute with 100 ul of water).

- Reconstitution Method:**
1. Centrifuge at 5,000xg for 5min.
 2. Carefully open the tube and add 100ul of sterile water to dissolve the DNA.
 3. Close the tube and incubate for 10 minutes at room temperature.
 4. Briefly vortex the tube and then do a quick spin (less than 5000xg) to concentrate the liquid at the bottom.
 5. Store the suspended plasmid at -20°C. The DNA is stable for at least one year from date of shipping when stored at -20°C.

RefSeq: [NM_022098.4](#)

RefSeq Size: 8027 bp

RefSeq ORF: 1524 bp

Locus ID: 63929

UniProt ID: [Q9NQH7](#)

Cytogenetics: 22q13.2

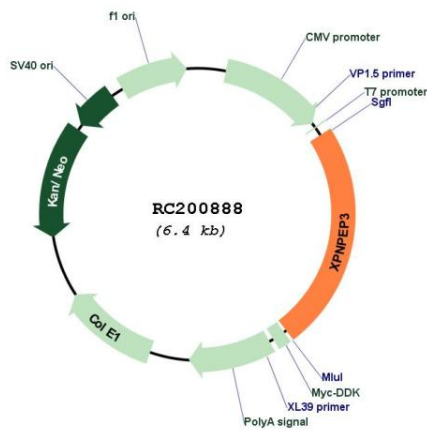
Domains: Peptidase_M24, AMP_N

Protein Families: Druggable Genome, Protease

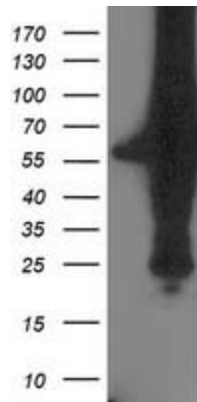
MW: 57.1 kDa

Gene Summary: The protein encoded by this gene belongs to the family of X-pro-aminopeptidases that utilize a metal cofactor, and remove the N-terminal amino acid from peptides with a proline residue in the penultimate position. This protein has been shown to localize to the mitochondria of renal cells, and have a role in ciliary function. Mutations in this gene are associated with nephronophthisis-like nephropathy-1. Alternatively spliced transcript variants encoding different isoforms have been noted for this gene, however, expression of some of these isoforms in vivo is not known.[provided by RefSeq, Mar 2011]

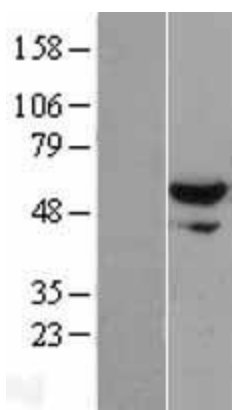
Product images:



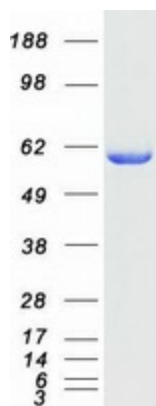
Circular map for RC200888



HEK293T cells were transfected with the pCMV6-ENTRY control (Cat# [PS100001], Left lane) or pCMV6-ENTRY XPNPEP3 (Cat# RC200888, Right lane) cDNA for 48 hrs and lysed. Equivalent amounts of cell lysates (5 ug per lane) were separated by SDS-PAGE and immunoblotted with anti-XPNPEP3(Cat# [TA503349]). Positive lysates [LY402903] (100ug) and [LC402903] (20ug) can be purchased separately from OriGene.



Western blot validation of overexpression lysate (Cat# [LY402903]) using anti-DDK antibody (Cat# [TA50011-100]). Left: Cell lysates from untransfected HEK293T cells; Right: Cell lysates from HEK293T cells transfected with RC200888 using transfection reagent MegaTran 2.0 (Cat# [TT210002]).



Coomassie blue staining of purified XPNPEP3 protein (Cat# [TP300888]). The protein was produced from HEK293T cells transfected with XPNPEP3 cDNA clone (Cat# RC200888) using MegaTran 2.0 (Cat# [TT210002]).