

Product datasheet for **RC200885**

SIN1 (MAPKAP1) (NM_024117) Human Tagged ORF Clone

Product data:

Product Type:	Expression Plasmids
Product Name:	SIN1 (MAPKAP1) (NM_024117) Human Tagged ORF Clone
Tag:	Myc-DDK
Symbol:	SIN1
Synonyms:	JC310; MIP1; SIN1; SIN1b; SIN1g
Mammalian Cell Selection:	Neomycin
Vector:	pCMV6-Entry (PS100001)
E. coli Selection:	Kanamycin (25 ug/mL)



[View online »](#)

ORF Nucleotide Sequence:

>RC200885 representing NM_024117
 Red=Cloning site Blue=ORF Green=Tags(s)

TTTTGTAATACGACTCACTATAGGGCGGCCGGAATTCGTCGACTGGATCCGGTACCGAGGAGATCTGCC
 GCC**CGGATCGCC**

ATGGCCTTCTGGACAATCCAATCATCTAGCTCATATTCGACAGTCACATGTGACCAGTGATGACA
 CGGAATGTGTGAGATGTTCTCATTGATCATGATGTTGACCTAGAGAAGATTCCTCCTTCAATGCC
 TGGAGACAGTGGGTCAGAAATTCAGGGAAGCAATGGTGAGACTCAGGGCTATGTATATGCCAGTCAGTC
 GATATTACCTCAAGTTGGGACTTTGGTATTAGAAGACGCTCAAACACAGCTCAAAGATTAGAACGACTCC
 GAAAAGAGAGACAAAACAGATCAAATGCAAAAATATTAGTGGAAAGAAAGAAATCTAAGCAATCAGC
 CCAGGAGTTAAAGTCACTGTTTGAATAAATCTCTCAAAGAGAAGCCTCCAATTTCTGGGAAGCAGTCG
 ATATTATCTGTACGCCTAGAACAGTGCCTCTGCAGCTGAATAACCCCTTTAACGAGTATCCAAATTTG
 ATGGCAAGGGTCACTGTAGGTACAACAGCAACCAAGAAGATCGATGTCTACCTCCCTCTGCACTCGAGCCA
 GGACAGACTGCTCCAATGACCGTGGTGAATGGCCAGCGCCAGGGTGCAGGACCTGATCGGGCTCATC
 TGCTGGCAGTATACAAGCGAAGGACGGGAGCCGAAGCTCAATGACAATGTCAAGTGCCTACTGCCTGCATA
 TTGCTGAGGATGATGGGGAGGTGGACACCGATTTCCCCCGCTGGATTCCAATGAGCCCATTCATAAGTT
 TGGCTTCACTTTGGCCCTGGTTGAAAAGTACTCATCTCCTGGTCTGACATCCAAAGAGTCACTCTTT
 GTTCGAATAAATGCTGCTCATGGATTCTCCCTTATTAGTGGACAACACAAAGGTTACCATGAAGGAAA
 TCTTACTGAAGGCAGTGAAGCGAAGAAAAGGATCCCAGAAAGTTTCAGGTTCAAGGGCAGACGGGTTTT
 TGAGGAGGATTCGAAATGACATAGCCACAGTACAGGATATGCTTAGCAGCCACCATTACAAGTCATTC
 AAAGTCAGCATGATCCACAGACTGCGATTACAACCGACGTACAGCTAGGTATCTCTGGAGACAAAGTAG
 AGATAGACCCTGTTACGAATCAGAAAGCCAGCACTAAGTTTTGGATTAAGCAGAAACCCATCTCAATCGA
 TTCCGACCTGCTGTGCCTGTGACCTTGTGAAGAGAAAAGCCCAAGTACGCAATATTTAAACTCAGG
 TATCTAAGCAATCAGACTATAAACACCTCTACTTTGAATCGGACGCTGCTACCGTCAATGAAATTTGTC
 TCAAGGTTAACTACATCCTGGAATCGGAGCTAGCACTGCCCGGGCTGACTACTTTGCTCAAAAACAAAG
 AAAACTGAACAGACGTACGAGCTTCAGCTTCCAGAAGGAGAAGAAATCCGGGCAGCAG

ACGCGTACGCGGCCGCTCGAGCAGAAACTCATCTCAGAAGAGGATCTGGCAGCAATGATATCCTGGATT
 ACAAGGATGACGACGATAAGGTTTAA

Protein Sequence:

>RC200885 representing NM_024117
 Red=Cloning site Green=Tags(s)

MAFLDNPTIILAHIRQSHVTSDDTGMCEMVLIDHDVDLEKIHPPSMPGDSGSEIQGSNGETQGYVYAQSV
 DITSSWDFGIRRRSNTAQRLELRKERQNIKCKNIQWKERNKQSAQELKSLFEKSLKEKPPISGKQS
 ILSVRLEQCPLQLNPNFNEYSKFDGKGVGTATKKIDVYLPLHSSQDRLLPMTVVTMASARVQDLIGLI
 CWQYTSEGREPKLNDNVSAYCLHIAEDDGEVDTFPPLDSNEPIHKFGFSTLALVEKYSSPGLTSKESLF
 VRINAAGHGFSLIQVDNKTVMKEILLKAVKRRKGSQKVSGRADGVFEEDSQIDIATVQDMLSSHYYKSF
 KYSMIHRLRFTTDVQLGISGDKVEIDPVTNQKASTKFWIKQKPIISIDSDLLCACDLAEEKSPSHAIKFLT
 YLSNHDKHLYFESDAATVNEIVLKVNVIILESRASTARADYFAQKQRKLNRRTSFSFQKEKKSQGG

TRTRPLEQKLISEEDLAANDILDYKDDDDKV

Chromatograms:

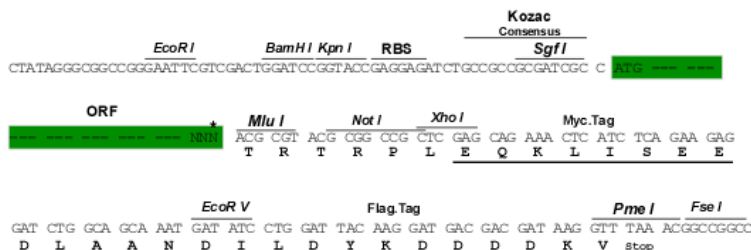
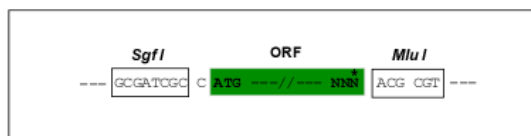
https://cdn.origene.com/chromatograms/mk8077_h01.zip

Restriction Sites:

Sgfl-Mlul

Cloning Scheme:

Cloning sites used for ORF Shutting:



* The last codon before the Stop codon of the ORF

ACCN: NM_024117

ORF Size: 1458 bp

OTI Disclaimer: The molecular sequence of this clone aligns with the gene accession number as a point of reference only. However, individual transcript sequences of the same gene can differ through naturally occurring variations (e.g. polymorphisms), each with its own valid existence. This clone is substantially in agreement with the reference, but a complete review of all prevailing variants is recommended prior to use. [More info](#)

OTI Annotation: This clone was engineered to express the complete ORF with an expression tag. Expression varies depending on the nature of the gene.

Components: The ORF clone is ion-exchange column purified and shipped in a 2D barcoded Matrix tube containing 10ug of transfection-ready, dried plasmid DNA (reconstitute with 100 ul of water).

Reconstitution Method:

1. Centrifuge at 5,000xg for 5min.
2. Carefully open the tube and add 100ul of sterile water to dissolve the DNA.
3. Close the tube and incubate for 10 minutes at room temperature.
4. Briefly vortex the tube and then do a quick spin (less than 5000xg) to concentrate the liquid at the bottom.
5. Store the suspended plasmid at -20°C. The DNA is stable for at least one year from date of shipping when stored at -20°C.

RefSeq: [NM_024117.3](#), [NP_077022.1](#)
RefSeq Size: 3287 bp

RefSeq ORF: 1461 bp

Locus ID: 79109

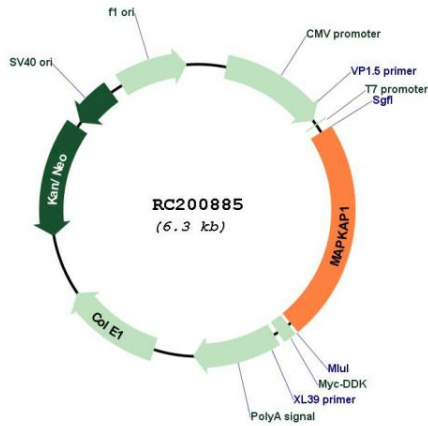
UniProt ID: [Q9BPZ7](#)
Cytogenetics: 9q33.3

Protein Families: Druggable Genome

MW: 54.8 kDa

Gene Summary: This gene encodes a protein that is highly similar to the yeast SIN1 protein, a stress-activated protein kinase. Alternatively spliced transcript variants encoding distinct isoforms have been described. Alternate polyadenylation sites as well as alternate 3' UTRs have been identified for transcripts of this gene. [provided by RefSeq, Jul 2008]

Product images:



Circular map for RC200885