

Product datasheet for **RC200884**

PTGES3L-AARSD1 (NM_025267) Human Tagged ORF Clone

Product data:

Product Type:	Expression Plasmids
Product Name:	PTGES3L-AARSD1 (NM_025267) Human Tagged ORF Clone
Tag:	Myc-DDK
Symbol:	PTGES3L-AARSD1
Mammalian Cell Selection:	Neomycin
Vector:	pCMV6-Entry (PS100001)
E. coli Selection:	Kanamycin (25 ug/mL)



[View online »](#)

ORF Nucleotide Sequence:

>RC200884 ORF sequence
 Red=Cloning site Blue=ORF Green=Tags(s)

TTTTGTAATACGACTCACTATAGGGCGGCCGGAATTCGTCGACTGGATCCGGTACCGAGGAGATCTGCC
 GCC**CGGATCGCC**

ATGGAGTTTTGTGTTGAGGACAGCACCGATGTCCACGTGCTTATTGAGGATCACCGCATTGTGTTACGTC
 GCAAGAATGCCGATGGAGTGGAGTTGTACAATGAGATTGAGTTCTATGCCAAAGTGAACCAAGGACTC
 CCAGGATAAGCGCTCTTCCCGCTCTATTACTTGTGTTGAGAAAATGGAAGAAAAGGTGGCCTGGCCG
 CGGCTTACCAAGGAGGATATCAAGCCAGTGTGGCTGTCTGTGGACTTTGATAACTGGAGAGACTGGGAAG
 GGGATGAAGAGATGGAGCTGGCTCATGTGGAACATTATGCAGAGCTTTTGAAGAAGGTCAGCACCAAGAG
 ACCTCCACCTGCCATGGATGATTTGGATTTACCACCACCGTGGTCTCTTGCTGTCCCGGGAGCTGCAG
 ACTGAAGGGAGCAACGGCAAGAAAGAAGTGTGAGCGGTTTCCAAGTGGTCTGGAAGACACAGTGTCTT
 TCCCTGAGGGCGGGGACAGCCTGATGACCGTGGTACAATCAATGACATCTCTGTGCTGAGAGTGACTCG
 CCGTGGGAACAGGCTGATCATTTCACCCAGACACCCCTGGATCCAGGAAGCCAGGTTCTGGTCCGGGTA
 GATTGGGAGCGGAGGTTTACCACATGCAGCAGCATTACGGGCAGCATCTCATCACGGCAGTTGCTGACC
 ATCTATTTAAGCTGAAGACAACATCATGGGAGTTAGGGAGATTTCCGGAGTGCATTGAGCTGGACACCCC
 CTCTATGACTGCAGAGCAAGTAGCTGCCATTGAGCAGAGCGTCAATGAAAAAATCAGAGATCGGCTGCCT
 GTGAATGTCCGAGAACTGAGCCTGGATGATCCTGAGGTGGAGCAGGTGAGTGGCCGGGTTTGCCTGATG
 ATCATGCTGGGCCATTCCGGTTGTTAACATCGAGGGCGTTGATTCCAACATGTGCTGTGGGACCCATGT
 GAGCAATCTCAGTGACCTCAGGTCATTAAGATTCTGGGCACTGAGAAGGGGAAAAAGAACAACCAAC
 CTGATATTTCTGTCTGGGAACCGGTGCTGAAGTGGATGGAGAGAAGTCAATGGAAGTAAAAAGCACTGA
 CTGCTCTGCTTAAGTGTGGAGCAGAGGATCATGTGGAAGCAGTAAAAAGCTCCAGAACTCCACCAAGAT
 CCTGCAGAAGAATAACCTGAATCTGCTCAGAGACCTGGCTGTGCACATTGCCCATAGCCTCAGGAACAGT
 CCAGACTGGGGAGGTGTGGTCATATTACACAGGAAGGAGGGTATTGAGATTGATGAATATCATTGCCA
 ATGAGATTGGGTGAGGAGACCCTCCTGTTCTTAACTGTGGCGATGAGAAAGGTGGTGGACTCTTCTT
 ACTGGCAGGGCCACCTGCGTCTGTGGAGACCCTGGGGCCAGGGTGGCTGAGGTCTGGAAGGCAAGGA
 GCAGGGAAGAAAGGCCGTTTTCAGGGCAAGGCCACCAAGATGAGCCGGCGGATGGAGGCGCAGGCGCTTC
 TCCAGGACTACATCAGCACGAGAGTGTAAAGGAG

ACGCGTACGCGGCCGCTCGAGCAGAAACTCATCTCAGAAGAGGATCTGGCAGCAAATGATATCCTGGATT
 ACAAGGATGACGACGATAAGGTTTAA

Protein Sequence:

>RC200884 protein sequence
 Red=Cloning site Green=Tags(s)

MEFCVEDSTDVHVLIEDHRIVFSCKNADGVELYNEIEFYAKVNSKDSQDKRSSRSITCFVRKWEKVAWP
 RLTKEDIKPVWLSVDFDNWRDWEDEEMELAHVEHYAELLKVVSTKRPPPAMDDLDFTTTIVVSCCPAELQ
 TEGSNGKKEVLSGFQVLEDTVLFPEGGGQPPDRGTINDISVLRVTRRGEQADHFQTPLDPGSQVLVVRV
 DWERRFDHMQQHSGQLITAVADHLFKLKTTSWELGRFRSAIELDTPSMTAEQVAAIEQSVNEKIRDRLP
 VNVRELSLDDPEVEQVSGRGLPDDHAGPIRVVNIIEGVDSNMCCGTHVSNLSDLQVIKILGTEKGGKKNRTN
 LIFLSGNRVLKWMERSHGTEKAL TALLKCGAEDHVEAVKKLQNSTKILQKNLNLRLDLAVHIAHSLRNS
 PDWGGVVILHRKEGDSEFMNIIANEIGSEETLLFLTVGDEKGGGLFLLAGPPASVETLGPRAEVLGEGK
 AGKKGRFQGKATKMSRMEQAQLLQDYISTQSAKE

TRTRPLEQKLISEEDLAANDILDYKDDDDKV

Chromatograms:

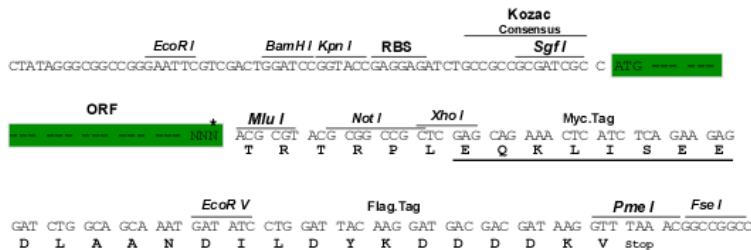
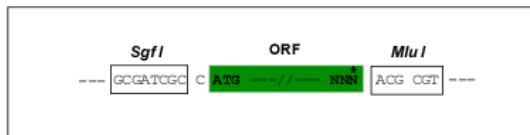
https://cdn.origene.com/chromatograms/mk6078_c02.zip

Restriction Sites:

Sgfl-Mlul

Cloning Scheme:

Cloning sites used for ORF Shutting:



* The last codon before the Stop codon of the ORF

ACCN: NM_025267

ORF Size: 1575 bp

OTI Disclaimer: The molecular sequence of this clone aligns with the gene accession number as a point of reference only. However, individual transcript sequences of the same gene can differ through naturally occurring variations (e.g. polymorphisms), each with its own valid existence. This clone is substantially in agreement with the reference, but a complete review of all prevailing variants is recommended prior to use. [More info](#)

OTI Annotation: This clone was engineered to express the complete ORF with an expression tag. Expression varies depending on the nature of the gene.

Components: The ORF clone is ion-exchange column purified and shipped in a 2D barcoded Matrix tube containing 10ug of transfection-ready, dried plasmid DNA (reconstitute with 100 ul of water).

Reconstitution Method:

1. Centrifuge at 5,000xg for 5min.
2. Carefully open the tube and add 100ul of sterile water to dissolve the DNA.
3. Close the tube and incubate for 10 minutes at room temperature.
4. Briefly vortex the tube and then do a quick spin (less than 5000xg) to concentrate the liquid at the bottom.
5. Store the suspended plasmid at -20°C. The DNA is stable for at least one year from date of shipping when stored at -20°C.

RefSeq: [NM_025267.2](#), [NP_079543.1](#)
RefSeq Size: 1800 bp

RefSeq ORF: 1578 bp

Locus ID: 100885850

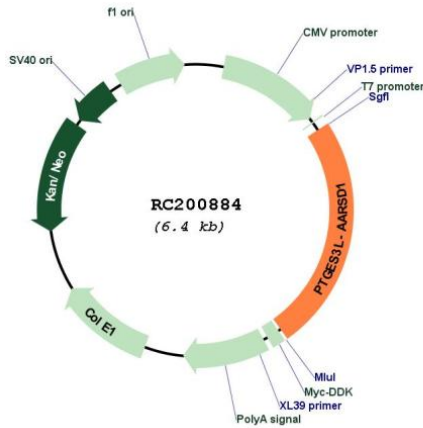
UniProt ID: [Q9BTE6](#)

Cytogenetics: 17q21.31

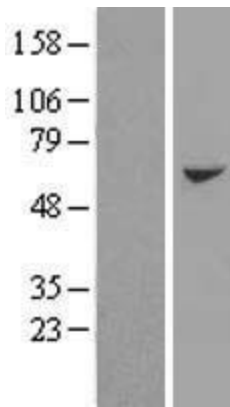
MW: 58.8 kDa

Gene Summary: This locus represents naturally occurring readthrough transcription between the neighboring PTGES3L (prostaglandin E synthase 3 (cytosolic)-like) and AARSD1(alanyl-tRNA synthetase domain containing 1) genes on chromosome 17. The readthrough transcript encodes a fusion protein that shares sequence identity with each individual gene product. [provided by RefSeq, May 2012]

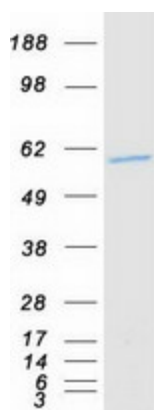
Product images:



Circular map for RC200884



Western blot validation of overexpression lysate (Cat# [LY410824]) using anti-DDK antibody (Cat# [TA50011-100]). Left: Cell lysates from untransfected HEK293T cells; Right: Cell lysates from HEK293T cells transfected with RC200884 using transfection reagent MegaTran 2.0 (Cat# [TT210002]).



Coomassie blue staining of purified PTGES3L-AARSD1 protein (Cat# [TP300884]). The protein was produced from HEK293T cells transfected with PTGES3L-AARSD1 cDNA clone (Cat# RC200884) using MegaTran 2.0 (Cat# [TT210002]).