

Product datasheet for **RC200883**

CYBC1 (NM_001033046) Human Tagged ORF Clone

Product data:

Product Type: Expression Plasmids
Product Name: CYBC1 (NM_001033046) Human Tagged ORF Clone
Tag: Myc-DDK
Symbol: CYBC1
Synonyms: C17orf62; CGD5; Eros
Mammalian Cell Selection: Neomycin
Vector: pCMV6-Entry (PS100001)
E. coli Selection: Kanamycin (25 ug/mL)
ORF Nucleotide Sequence: >RC200883 ORF sequence
 Red=Cloning site Blue=ORF Green=Tags(s)

TTTTGTAATACGACTCACTATAGGGCGCCGGGAATTCGTCGACTGGATCCGGTACCGAGGAGATCTGCC
 GCC**CGATCGCC**

ATGTACCTGCAGGTGGAGACCCGCACCAGCTCCCGCTCCATCTGAAGAGGGCTCCAGGCATCCGGTCTT
 GGTCCCTGCTGGTTGGAATCTTGTGCGATTGGCTGGCTGCTGCCTACTACAGCGGAGATAGCCTGGGCTG
 GAAGCTCTTCTACGTACAGGCTGCCTGTTTGTGGCTGTGCAGAAGCTGGAGGACTGGGAGGAAGCCATC
 TTCGACAAGACACAGGAAGGTTGTTTGAAGACGTTTCAGCCTCTACAAGAAGCTGCTGACTCTTTTCA
 GAGCTGGCCACGACCAGGTGGTGGTCTGCTCCATGATGTCCGTGATGTGAGCGTGGAGGAGGAGAAGGT
 CCGGTACTTCGGAAAGGCTACATGGTGGTGTCCGGCTTGCAGCGGGCTTCTCCACCCCTCACGCAG
 AGTGACGTGATGGCCACCGCAGTGATGTGGAAGCCATCGCCAAGCTCATCACCAGCTTCTGGAGCTGC
 ACTGCCTTGAGAGCCCCACAGAGCTGTCTCAGAGCAGCGACAGTGAGCCGGTGACCCTGCAAGCCAGAG
 C

ACGCGTACGCGGCCGCTCGAGCAGAACTCATCTCAGAAGAGGATCTGGCAGCAATGATATCCTGGATT
 ACAAGGATGACGACGATAAGGTTTAA

Protein Sequence: >RC200883 protein sequence
 Red=Cloning site Green=Tags(s)

MYLQVETRTSSRLHLKRAPGIRSWLLVGILSIGLAAAYYSGDSLWKLFFVVTGCLFVAVQNLEDWEEAI
 FDKSTGKVVLLKTFSLYKLLTLFRAGHDQVVLLHDVRDVSVEEEKVRYFGKGYMVLRLATGFSHPLTQ
 SAVMGHRSDVEIAKLLITSFLELHCLESPTELSQQSSDSEAGDPASQS

TRTRPLEQKLISEEDLAANDILDYKDDDDKV



[View online »](#)

Chromatograms: https://cdn.origene.com/chromatograms/mk6408_d08.zip

Restriction Sites: SgfI-MluI

Cloning Scheme:



ACCN: NM_001033046

ORF Size: 561 bp

OTI Disclaimer: The molecular sequence of this clone aligns with the gene accession number as a point of reference only. However, individual transcript sequences of the same gene can differ through naturally occurring variations (e.g. polymorphisms), each with its own valid existence. This clone is substantially in agreement with the reference, but a complete review of all prevailing variants is recommended prior to use. [More info](#)

OTI Annotation: This clone was engineered to express the complete ORF with an expression tag. Expression varies depending on the nature of the gene.

Components: The ORF clone is ion-exchange column purified and shipped in a 2D barcoded Matrix tube containing 10ug of transfection-ready, dried plasmid DNA (reconstitute with 100 ul of water).

Reconstitution Method:

1. Centrifuge at 5,000xg for 5min.
2. Carefully open the tube and add 100ul of sterile water to dissolve the DNA.
3. Close the tube and incubate for 10 minutes at room temperature.
4. Briefly vortex the tube and then do a quick spin (less than 5000xg) to concentrate the liquid at the bottom.
5. Store the suspended plasmid at -20°C. The DNA is stable for at least one year from date of shipping when stored at -20°C.

RefSeq: [NM_001033046.4](#)

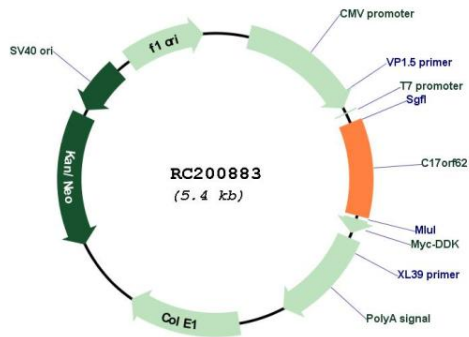
RefSeq Size: 2167 bp

RefSeq ORF: 564 bp

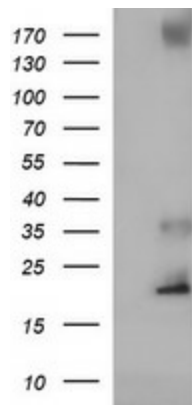
Locus ID: 79415

UniProt ID: [Q9BQA9](#)
Cytogenetics: 17q25.3
Protein Families: Transmembrane
MW: 20.8 kDa
Gene Summary: Necessary for a stable expression of the CYBA and CYBB subunits of the cytochrome b-245 hetrodimer. Controls the phagocyte respiratory burst and is essential for innate immunity. [UniProtKB/Swiss-Prot Function]

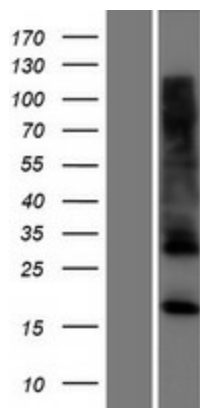
Product images:



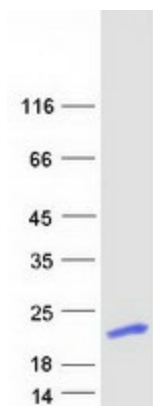
Circular map for RC200883



HEK293T cells were transfected with the pCMV6-ENTRY control (Cat# [PS100001], Left lane) or pCMV6-ENTRY C17orf62 (Cat# RC200883, Right lane) cDNA for 48 hrs and lysed. Equivalent amounts of cell lysates (5 ug per lane) were separated by SDS-PAGE and immunoblotted with anti-C17orf62 (Cat# [TA506979]). Positive lysates [LY422350] (100ug) and [LC422350] (20ug) can be purchased separately from OriGene.



Western blot validation of overexpression lysate (Cat# [LY420251]) using anti-DDK antibody (Cat# [TA50011-100]). Left: Cell lysates from untransfected HEK293T cells; Right: Cell lysates from HEK293T cells transfected with [RC216433] using transfection reagent MegaTran 2.0 (Cat# [TT210002]).



Coomassie blue staining of purified CYBC1 protein (Cat# [TP300883]). The protein was produced from HEK293T cells transfected with CYBC1 cDNA clone (Cat# RC200883) using MegaTran 2.0 (Cat# [TT210002]).