

Product datasheet for **RC200879**

PUS1 (NM_025215) Human Tagged ORF Clone

Product data:

Product Type:	Expression Plasmids
Product Name:	PUS1 (NM_025215) Human Tagged ORF Clone
Tag:	Myc-DDK
Symbol:	PUS1
Synonyms:	MLASA1
Mammalian Cell Selection:	Neomycin
Vector:	pCMV6-Entry (PS100001)
E. coli Selection:	Kanamycin (25 ug/mL)



[View online »](#)

ORF Nucleotide Sequence:

>RC200879 ORF sequence
 Red=Cloning site Blue=ORF Green=Tags(s)

TTTTGTAATACGACTCACTATAGGGCGGCCGGGAATTCGTCGACTGGATCCGGTACCGAGGAGATCTGCC
 GCC**CGGATCGCC**

ATGGGCCTCCAGCTTCGCGCGCTGTTGGGAGCCTTCGGACGGTGGACCCTGCGCCTGGGACCGCGTCCGT
 CCTGCTCGCCGCGCATGGCCGGGAACGCGGAGCCGCCGCCCGCCGAGCCGCATGCCCCAGGACCGGAG
 GTCTGCAGCGGCCGGCCGGGGCGGACCGCGTCTGGGAGGACGAGAACATCCGGCGAAGAAGCTCAAG
 AGCGGTGGCGACGAGGAGCGGCGGAGAAGCCGCCAAGCGGAAGATCGTGTCTCATGGCCTATTCGG
 GCAAGGGCTACCACGGCATGCAGAGGAATGTCGGGTCTCACAATCAAACAATTGAAGATGACTTGGT
 GTCCGCCCTCGTCCGGTCAAGCTGTATTCTGAAAATCATGGTGAAGGACATGAGGAAAATGTCCTCCAG
 CGCTGCGCCCGGACAGACAAGGGTGTGTCGCGAGCCGGCCAGGTGGTATCCCTGAAGGTGTGGCTGATTG
 ACGACATTCTAGAAAAGATCAACAGCCACCTTCCCTCTCACATTCGGATTCTGGGACTGAAGCGGGTAC
 GGGCGGGTTAACTCCAAGAACAGATGTGATGCCAGGACCTATTGCTACCTGCTGCCACGTTTGCCTTT
 GCGCACAAGGACCGGGAGGTTCAAGGATGAGACCTACCGCCTGAGCGCCGAGACGCTGCAGCAGGTCAACA
 GGCTCCTGGCCTGCTACAAGGGCACGCACAACCTCCACAATTTACCTCGCAGAAGGGGGCCGAGGATCC
 CAGTGCCTGCCGTACATCCTGGAGATGTACTGCGAGGAACCTTTGTGCGGGAGGGCCTGGAGTTTGGC
 GTGATCAGGGTGAAGGGCCAGAGCTTATGATGCATCAGATCCGGAAGATGGTCGGCCTGGTGGTGGCCA
 TTGTGAAGGGTTATGCCCTGAGAGCGTGTGGAGCGCAGCTGGGGCACAGAGAAGGTGGACGTGCCCAA
 GGGCCCGGACTCGCCTGGTCTGGAGAGGGTGCACCTCGAGAAGTACAACCAGCGCTTTGGCAACGAT
 GGGCTGCATGAGCCGCTGGACTGGGCGCAGGAGGAAGGAAGGTGCGAGCCTTCAAGGAGGAGCACATCT
 ACCCCACCATCATCGGCACCGAGCGGGACGAACGCTCCATGGCCAGTGGCTGAGCACCTTGCCCATCCA
 CAACTTCAGTGCCACCGCTCTCACGGCAGGTGGCACGGGCGCCAAGGTGCCAGTCCCCTGGAAGGCAGT
 GAAGGGGACGGAGACTGAC

ACGCGTACGCGGCCGCTCGAGCAGAACTCATCTCAGAAGAGGATCTGGCAGCAAATGATATCCTGGATT
 ACAAGGATGACGACGATAAGGTTTAA

Protein Sequence:

>RC200879 protein sequence
 Red=Cloning site Green=Tags(s)

MGLQLRALLGAFGRWTLRLGPRPSCSPRMAGNAEPPPAGAACPQDRRSCSGRAGGDRVWEDGEHPAKKLLK
 SGGDEERREKPPKRKIVLLMAYSGKGYHGMQRNVGSSQFKTIEDDLVSALVRSQCIPENHGEMRKMFSQ
 RCARTDKGVSAAGQVVSLLKVLVLLIDILEKINSHLP SHIRILGLKRVTTGGFNSKNRCDARTYCYLLPTFAF
 AHKDRDVQDETYRLSAETLQQVNRLLACYKGTNHFHNF TSQKGPQDPSACRYILEMYCEEPFVREGLEFA
 VIRVKQGSFMMHQIRKMGVGLVVAIVKGYAPESVLERSWGTEKVDVPKAPGLGLVLERVHFEKYNQRFND
 GLHEPLDWAQEEGKVAAFKEEHIYPTIIIGTERDERSMAQWLSTLPIHNF SATALTAGGTGAKVPSPLEGS
 EGDGDTD

TRTRPLEQKLISEEDLAANDILDYKDDDDKV

Chromatograms:

https://cdn.origene.com/chromatograms/mk6064_c03.zip

Restriction Sites:

SgfI-MluI

Cloning Scheme:


ACCN: NM_025215

ORF Size: 1281 bp

OTI Disclaimer: The molecular sequence of this clone aligns with the gene accession number as a point of reference only. However, individual transcript sequences of the same gene can differ through naturally occurring variations (e.g. polymorphisms), each with its own valid existence. This clone is substantially in agreement with the reference, but a complete review of all prevailing variants is recommended prior to use. [More info](#)

OTI Annotation: This clone was engineered to express the complete ORF with an expression tag. Expression varies depending on the nature of the gene.

Components: The ORF clone is ion-exchange column purified and shipped in a 2D barcoded Matrix tube containing 10ug of transfection-ready, dried plasmid DNA (reconstitute with 100 ul of water).

Reconstitution Method:

1. Centrifuge at 5,000xg for 5min.
2. Carefully open the tube and add 100ul of sterile water to dissolve the DNA.
3. Close the tube and incubate for 10 minutes at room temperature.
4. Briefly vortex the tube and then do a quick spin (less than 5000xg) to concentrate the liquid at the bottom.
5. Store the suspended plasmid at -20°C. The DNA is stable for at least one year from date of shipping when stored at -20°C.

RefSeq: [NM_025215.6](#)

RefSeq Size: 2014 bp

RefSeq ORF: 1284 bp

Locus ID: 80324

UniProt ID: [Q9Y606](#)

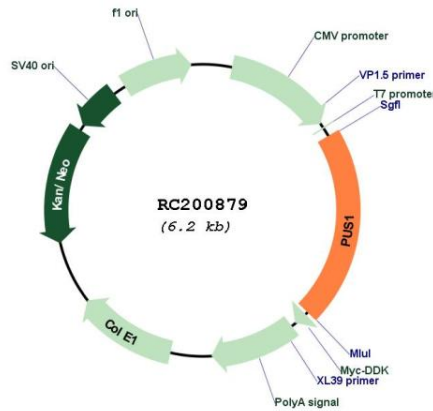
Cytogenetics: 12q24.33

Domains: PseudoU_synth_1

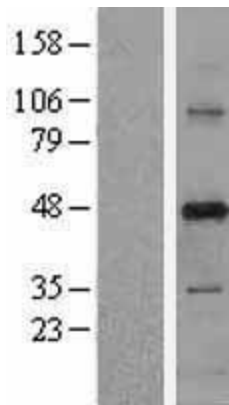
MW: 47.5 kDa

Gene Summary: This gene encodes a pseudouridine synthase that converts uridine to pseudouridine once it has been incorporated into an RNA molecule. The encoded enzyme may play an essential role in tRNA function and in stabilizing the secondary and tertiary structure of many RNAs. A mutation in this gene has been linked to mitochondrial myopathy and sideroblastic anemia. Alternate splicing results in multiple transcript variants.[provided by RefSeq, Sep 2009]

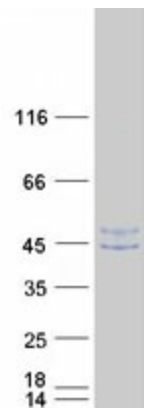
Product images:



Circular map for RC200879



Western blot validation of overexpression lysate (Cat# [LY410839]) using anti-DDK antibody (Cat# [TA50011-100]). Left: Cell lysates from untransfected HEK293T cells; Right: Cell lysates from HEK293T cells transfected with RC200879 using transfection reagent MegaTran 2.0 (Cat# [TT210002]).



Coomassie blue staining of purified PUS1 protein (Cat# [TP300879]). The protein was produced from HEK293T cells transfected with PUS1 cDNA clone (Cat# RC200879) using MegaTran 2.0 (Cat# [TT210002]).