

## Product datasheet for **RC200878**

### **RBM18 (NM\_033117) Human Tagged ORF Clone**

#### Product data:

Product Type: Expression Plasmids  
 Product Name: RBM18 (NM\_033117) Human Tagged ORF Clone  
 Tag: Myc-DDK  
 Symbol: RBM18  
 Mammalian Cell Selection: Neomycin  
 Vector: pCMV6-Entry (PS100001)  
 E. coli Selection: Kanamycin (25 ug/mL)  
 ORF Nucleotide Sequence: >RC200878 representing NM\_033117  
 Red=Cloning site Blue=ORF Green=Tags(s)

TTTTGTAATACGACTCACTATAGGGCGGCCGGAATTCGTCGACTGGATCCGGTACCGAGGAGATCTGCC  
 GCC**CGATCGCC**

ATGGAAGCAGAAACAAAACCTCTCCCTGGAGAATGCATCCATCCTTTTCAGAGGGCTCTCTGCAGGAAG  
 GACACCGATTATGGATTGGCAACCTGGACCCAAAATTACCGAATACCACCTCCTCAAGCTCCTCCAGAA  
 GTTTGGCAAGGTAAGCAGTTTGACTTCCTCTCCACAAGTCAGGTGCTTTGGAGGGACAGCCTCGAGGC  
 TACTGTTTTGTTAACTTTGAAACTAAGCAGGAAGCAGAGCAAGCCATCCAGTGTCTCAATGGCAAGTTGG  
 CCTGTCCAAGAAGCTGGTGGTGGCAGATGCTCAAGTAAGAGATATGATCATAACAAGAATGA  
 TAAGATCTTCCAATCAGTCTCGAGCCATCCTCAAGCACTGAGCCTACTCAGTCTAACCTAAGTGTCACT  
 GCAAAGATAAAAAGCCATTGAAGCAAAACTGAAAATGATGGCGGAAAATCCTGATGCAGAGTATCCAGCAG  
 CGCCTGTTTATTCTACTTTAAGCCACCAGATAAAAAAAGGACTACTCCATATTCTAGAACAGCATGGAA  
 ATCTCGAAGA

**ACGCGT**ACGCGGCCGCTCGAGCAGAAACTCATCTCAGAAGAGGATCTGGCAGCAATGATATCCTGGATT  
 ACAAGGATGACGACGATAAGGTTTAA

Protein Sequence: >RC200878 representing NM\_033117  
 Red=Cloning site Green=Tags(s)

MEAETKTLPLENASILSEGLQEGHRLWIGNLDPKITEYHLLKLLQKFGKVKQDFDLFHKSGALEGQPRG  
 YCFVNFETKQEAQAIQCLNGKLALSKKLVVRWAHAQVKRYDHNKNDKILPISLEPSSSTEPTQSNLSVT  
 AKIKAIEAKLKMAENPDAEYPAAPVYSYFKPPDKRRTTPYSRTAWKSRR

**TR**TRPLEQKLISEEDLAANDILDYKDDDDKV

Chromatograms: [https://cdn.origene.com/chromatograms/ja1448\\_e12.zip](https://cdn.origene.com/chromatograms/ja1448_e12.zip)



**Restriction Sites:** SgfI-MluI

**Cloning Scheme:**



**ACCN:** NM\_033117

**ORF Size:** 570 bp

**OTI Disclaimer:** The molecular sequence of this clone aligns with the gene accession number as a point of reference only. However, individual transcript sequences of the same gene can differ through naturally occurring variations (e.g. polymorphisms), each with its own valid existence. This clone is substantially in agreement with the reference, but a complete review of all prevailing variants is recommended prior to use. [More info](#)

**OTI Annotation:** This clone was engineered to express the complete ORF with an expression tag. Expression varies depending on the nature of the gene.

**Components:** The ORF clone is ion-exchange column purified and shipped in a 2D barcoded Matrix tube containing 10ug of transfection-ready, dried plasmid DNA (reconstitute with 100 ul of water).

- Reconstitution Method:**
1. Centrifuge at 5,000xg for 5min.
  2. Carefully open the tube and add 100ul of sterile water to dissolve the DNA.
  3. Close the tube and incubate for 10 minutes at room temperature.
  4. Briefly vortex the tube and then do a quick spin (less than 5000xg) to concentrate the liquid at the bottom.
  5. Store the suspended plasmid at -20°C. The DNA is stable for at least one year from date of shipping when stored at -20°C.

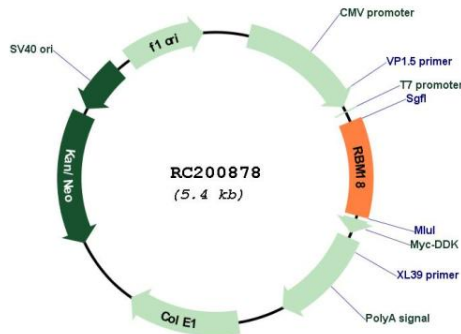
**Note:** Plasmids are not sterile. For experiments where strict sterility is required, filtration with 0.22um filter is required.

**RefSeq:** [NM\\_033117.4](#)

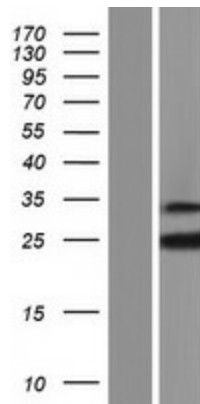
**RefSeq Size:** 1087 bp

**RefSeq ORF:** 573 bp

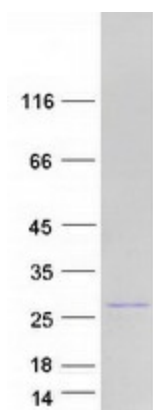
**Locus ID:** 92400  
**UniProt ID:** [Q96H35](#)  
**Cytogenetics:** 9q33.2  
**Domains:** RRM  
**MW:** 21.5 kDa

**Product images:**


Circular map for RC200878



Western blot validation of overexpression lysate (Cat# [LY409722]) using anti-DDK antibody (Cat# [TA50011-100]). Left: Cell lysates from untransfected HEK293T cells; Right: Cell lysates from HEK293T cells transfected with RC200878 using transfection reagent MegaTran 2.0 (Cat# [TT210002]).



Coomassie blue staining of purified RBM18 protein (Cat# [TP300878]). The protein was produced from HEK293T cells transfected with RBM18 cDNA clone (Cat# RC200878) using MegaTran 2.0 (Cat# [TT210002]).