

## Product datasheet for **RC200867**

### CCDC124 (NM\_138442) Human Tagged ORF Clone

#### Product data:

**Product Type:** Expression Plasmids  
**Product Name:** CCDC124 (NM\_138442) Human Tagged ORF Clone  
**Tag:** Myc-DDK  
**Symbol:** CCDC124  
**Mammalian Cell Selection:** Neomycin  
**Vector:** pCMV6-Entry (PS100001)  
**E. coli Selection:** Kanamycin (25 ug/mL)  
**ORF Nucleotide Sequence:** >RC200867 ORF sequence  
 Red=Cloning site Blue=ORF Green=Tags(s)

TTTTGTAATACGACTCACTATAGGGCGGCCGGAATTCGTCGACTGGATCCGGTACCGAGGAGATCTGCC  
 GCC**CGATCGCC**

ATGCCCAAGAAGTTCAGGGTGAGAACAACCAAGTCGGCAGCGGCCGGGCACGGAGGGCAGAGGCCAAGG  
 CGGCCGCTGATGCCAAGAAGCAGAAGGAGCTGGAGGATGCCTACTGGAAGGACGACGACAAAACACGTCAT  
 GAGGAAGGAGCAGCGCAAGGAGGAGAAGGAGAAGCGGCCCTCGACCAGCTGGAACGTAGAAGGAGACG  
 CAGCGCCTACTGGAGGAGGAGGACTCCAAGCTCAAGGGCGGCAAGGCGCCGGGTGGCCACGTCACGCA  
 AGGTCACCCGGGCCAGATCGAGGACAGCTGCGCCGAGACCATCAGCTCAGGGAGGCCCGGACACAGC  
 CGAGAAAAGCCAAGAGCCATCTGGAGGTGCGCTGGAGGAGAACGTGAACCGCCGCTGCTGGAGGAGGGC  
 AGCGTGGAGGCGCGCACCATCGAGGACGCCATTGCAAGTGTCTCAGCGTGGCGGAGGAGGCGCCGACCGGC  
 ACCCAGAAAGACGCATGCGGGCAGCCTTACAGCCTTTGAGGAAGCCAGCTGCCCGGGCTCAAACAAGA  
 GAACCCCAACATGCGGCTGTCGACAGCTGAAACAGCTGCTCAAGAAGGAGTGGCTCCGCTCTCCTGACAAC  
 CCCATGAACCAGCGGGCCGTCCTTCAATGCCCCCAAG

**ACGCGT**ACGCGGCCGCTCGAGCAGAAACTCATCTCAGAAGAGGATCTGGCAGCAAATGATATCTGGATT  
 ACAAGGATGACGACGATAAGGTTTAA

**Protein Sequence:** >RC200867 protein sequence  
 Red=Cloning site Green=Tags(s)

MPKKFQGENTKSAARARRAEAKAAADAKKQKELEDAYWKDDDKHVMRKEQRKEEKEKRRLDQLERKKET  
 QRLLEEEDSKLKGKAPRVATSSKVTRAQIEDTLRRDHQLREAPDTAEKAKSHLEVPLEENVNRRVLEEG  
 SVEARTIEDAIAVLSVAEEAADRHPERRMRAAFTAFEEAQLPRLKQENPNMRLSQLKQLLKEWLRSPDN  
 PMNQRAVFPNAPK

**TR**TRPLEQKLISEEDLAANDILDYKDDDDKV



**Chromatograms:** [https://cdn.origene.com/chromatograms/mk6429\\_g04.zip](https://cdn.origene.com/chromatograms/mk6429_g04.zip)

**Restriction Sites:** SgfI-MluI

**Cloning Scheme:**



**ACCN:** NM\_138442

**ORF Size:** 669 bp

**OTI Disclaimer:** The molecular sequence of this clone aligns with the gene accession number as a point of reference only. However, individual transcript sequences of the same gene can differ through naturally occurring variations (e.g. polymorphisms), each with its own valid existence. This clone is substantially in agreement with the reference, but a complete review of all prevailing variants is recommended prior to use. [More info](#)

**OTI Annotation:** This clone was engineered to express the complete ORF with an expression tag. Expression varies depending on the nature of the gene.

**Components:** The ORF clone is ion-exchange column purified and shipped in a 2D barcoded Matrix tube containing 10ug of transfection-ready, dried plasmid DNA (reconstitute with 100 ul of water).

**Reconstitution Method:**

1. Centrifuge at 5,000xg for 5min.
2. Carefully open the tube and add 100ul of sterile water to dissolve the DNA.
3. Close the tube and incubate for 10 minutes at room temperature.
4. Briefly vortex the tube and then do a quick spin (less than 5000xg) to concentrate the liquid at the bottom.
5. Store the suspended plasmid at -20°C. The DNA is stable for at least one year from date of shipping when stored at -20°C.

**RefSeq:** [NM\\_138442.2](#), [NP\\_612451.1](#)

**RefSeq Size:** 1066 bp

**RefSeq ORF:** 672 bp

**Locus ID:** 115098

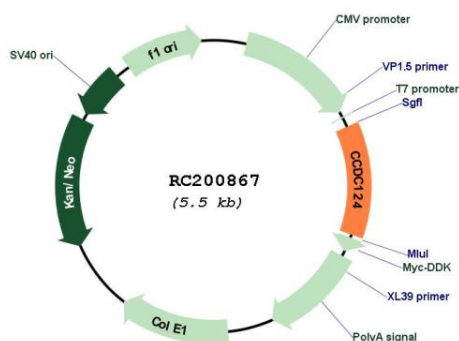
UniProt ID: [Q96CT7](#)

Cytogenetics: 19p13.11

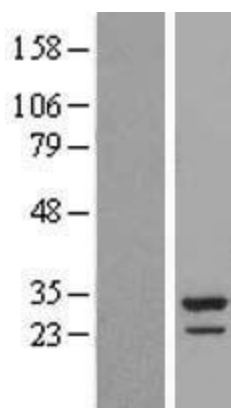
MW: 25.8 kDa

Gene Summary: Required for proper progression of late cytokinetic stages.[UniProtKB/Swiss-Prot Function]

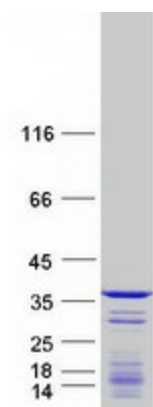
**Product images:**



Circular map for RC200867



Western blot validation of overexpression lysate (Cat# [LY427851]) using anti-DDK antibody (Cat# [TA50011-100]). Left: Cell lysates from untransfected HEK293T cells; Right: Cell lysates from HEK293T cells transfected with [RC227128] using transfection reagent MegaTran 2.0 (Cat# [TT210002]).



Coomassie blue staining of purified CCDC124 protein (Cat# [TP300867]). The protein was produced from HEK293T cells transfected with CCDC124 cDNA clone (Cat# RC200867) using MegaTran 2.0 (Cat# [TT210002]).