

Product datasheet for RC200866

C11orf73 (HIKESHI) (NM_016401) Human Tagged ORF Clone

Product data:

Product Type: Expression Plasmids
Product Name: C11orf73 (HIKESHI) (NM_016401) Human Tagged ORF Clone
Tag: Myc-DDK
Symbol: C11orf73
Synonyms: C11orf73; HLD13; HSPC138; HSPC179; L7RN6; OPI10
Mammalian Cell Selection: Neomycin
Vector: pCMV6-Entry (PS100001)
E. coli Selection: Kanamycin (25 ug/mL)
ORF Nucleotide Sequence: >RC200866 ORF sequence
 Red=Cloning site Blue=ORF Green=Tags(s)

TTTTGTAATACGACTCACTATAGGGCGGCCGGAATTCGTCGACTGGATCCGGTACCGAGGAGATCTGCC
 GCC**CGATCGCC**

ATGTTTGGCTGCTTGGTGGCGGGGAGGCTGGTGCAAACAGCTGCACAGCAAGTGGCAGAGGATAAATTTG
 TTTTGGACTTACCTGATTATGAAAGTATCAACCATGTTGTGGTTTTATGCTGGGAACAATCCCATTTC
 TGAGGGAATGGGAGGATCTGTCTACTTTTCTTATCCTGATTCAAATGGAATGCCAGTATGGCACTCCTA
 GGATTTGTCACGAATGGGAAGCCAAGTCCATCTTCAAATTTTCAGGTCTAAATCTGGAGAAGGAAGCC
 AACATCCTTTTGGAGCCATGAATATTGTCCGAATCCATCTGTTGCTCAGATTGGAAATTCAGTGAATT
 ATTAGACAGTATGGCTCAGCAGACTCCTGTAGGTAAATGCTGCTGTATCCTCAGTTGACTCATTCACTCAG
 TTCACACAAAAGATGTTGGACAATTTCTACAATTTGCTTCATCATTTGCTGCTCTCAGGCCAGATGA
 CACCAAGCCCATCTGAAATGTTCAATCCGGCAAATGTGGTTCTGAAATGGTATGAAAACCTTCAAAGACG
 ACTAGCACAGAACCCTCTCTTTTGGAAAACA

ACGCGTACGCGGCCGCTCGAGCAGAACTCATCTCAGAAGAGGATCTGGCAGCAAATGATATCCTGGATT
 ACAAGGATGACGACGATAAGGTTTAA

Protein Sequence: >RC200866 protein sequence
 Red=Cloning site Green=Tags(s)

MFGCLVAGRLVQTAAQQVAEDKFVFDLPDYESINHVVFMLGTIPFPEGMGGSVYFSYPDSNGMPVWQLL
 GFVTNGKPSAIFKISGLKSGEGSQHPFGAMNIVRTPSVAQIGISVELLD SMAQQTTPVGNAAVSSVDSFTQ
 FTQKMLDNFYNFASSFAVSQAQMTSPSEMFIPANVVLK WYENFQRRLAQNPLFWKT

TRTRPLEQKLISEEDLAANDILDYKDDDDKV



[View online »](#)

Chromatograms: https://cdn.origene.com/chromatograms/mk6429_a09.zip

Restriction Sites: SgfI-MluI

Cloning Scheme:



ACCN: NM_016401

ORF Size: 591 bp

OTI Disclaimer: The molecular sequence of this clone aligns with the gene accession number as a point of reference only. However, individual transcript sequences of the same gene can differ through naturally occurring variations (e.g. polymorphisms), each with its own valid existence. This clone is substantially in agreement with the reference, but a complete review of all prevailing variants is recommended prior to use. [More info](#)

OTI Annotation: This clone was engineered to express the complete ORF with an expression tag. Expression varies depending on the nature of the gene.

Components: The ORF clone is ion-exchange column purified and shipped in a 2D barcoded Matrix tube containing 10ug of transfection-ready, dried plasmid DNA (reconstitute with 100 ul of water).

Reconstitution Method:

1. Centrifuge at 5,000xg for 5min.
2. Carefully open the tube and add 100ul of sterile water to dissolve the DNA.
3. Close the tube and incubate for 10 minutes at room temperature.
4. Briefly vortex the tube and then do a quick spin (less than 5000xg) to concentrate the liquid at the bottom.
5. Store the suspended plasmid at -20°C. The DNA is stable for at least one year from date of shipping when stored at -20°C.

Note: Plasmids are not sterile. For experiments where strict sterility is required, filtration with 0.22um filter is required.

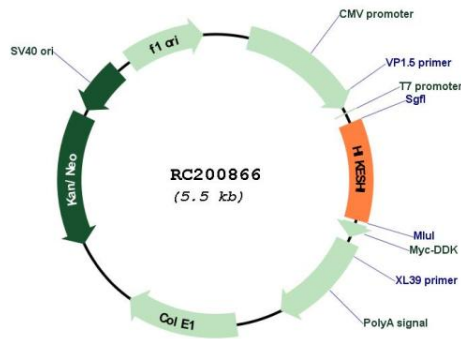
RefSeq: [NM_016401.4](#)

RefSeq Size: 1187 bp

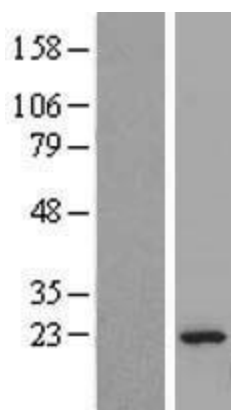
RefSeq ORF: 594 bp
 Locus ID: 51501
 UniProt ID: [Q53FT3](#)
 Cytogenetics: 11q14.2
 MW: 21.6 kDa

Gene Summary: This gene encodes an evolutionarily conserved nuclear transport receptor that mediates heat-shock-induced nuclear import of 70 kDa heat-shock proteins (Hsp70s) through interactions with FG-nucleoporins. The protein mediates transport of the ATP form but not the ADP form of Hsp70 proteins under conditions of heat shock stress. Structural analyses demonstrate that the protein forms an asymmetric homodimer and that the N-terminal domain consists of a jelly-roll/beta-sandwich fold structure that contains hydrophobic pockets involved in FG-nucleoporin recognition. Reduction of RNA expression levels in HeLa cells using small interfering RNAs results in inhibition of heat shock-induced nuclear accumulation of Hsp70s, indicating a role for this gene in regulation of Hsp70 nuclear import during heat shock stress. [provided by RefSeq, Apr 2016]

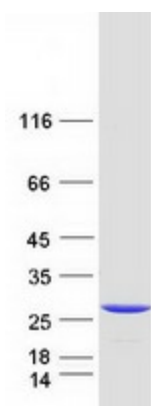
Product images:



Circular map for RC200866



Western blot validation of overexpression lysate (Cat# [LY413999]) using anti-DDK antibody (Cat# [TA50011-100]). Left: Cell lysates from untransfected HEK293T cells; Right: Cell lysates from HEK293T cells transfected with RC200866 using transfection reagent MegaTran 2.0 (Cat# [TT210002]).



Coomassie blue staining of purified HIKESHI protein (Cat# [TP300866]). The protein was produced from HEK293T cells transfected with HIKESHI cDNA clone (Cat# RC200866) using MegaTran 2.0 (Cat# [TT210002]).