

## Product datasheet for **RC200862**

### robld3 (LAMTOR2) (NM\_014017) Human Tagged ORF Clone

#### Product data:

**Product Type:** Expression Plasmids  
**Product Name:** robld3 (LAMTOR2) (NM\_014017) Human Tagged ORF Clone  
**Tag:** Myc-DDK  
**Symbol:** robld3  
**Synonyms:** ENDAP; HSPC003; MAPBPIP; MAPKSP1AP; p14; Ragulator2; ROBLD3  
**Mammalian Cell Selection:** Neomycin  
**Vector:** pCMV6-Entry (PS100001)  
**E. coli Selection:** Kanamycin (25 ug/mL)  
**ORF Nucleotide Sequence:** >RC200862 ORF sequence  
Red=Cloning site Blue=ORF Green=Tags(s)

TTTTGTAATACGACTCACTATAGGGCGCCGGAATTCGTCGACTGGATCCGGTACCGAGGAGATCTGCC  
GCC**CGATCGCC**

ATGCTGCGCCCAAGGCTTTGACCCAGGTGCTAAGCCAAGCCAACACTGGAGGCGTCCAGAGCACCTGC  
TGCTGAATAACGAGGGATCACTGCTGGCTACTCTGGTTACGGGGACACTGACGCCCGGGTCACCGCTGC  
CATAGCCAGTAACATCTGGGCCGCTACGACCGGAACGGGAACCAAGCGTTTAATGAAGACAATCTCAA  
TTCATCCTCATGGACTGCATGGAGGGCCGTGTAGCCATCACCCGAGTGGCCAACCTTCTGCTGTGTATGT  
ATGCCAAGGAGACCGTGGGCTTTGGAATGCTCAAGCCAAGGCCAGGCTTTGGTGCAGTACCTGGAGGA  
GCCCTCACCAAGTGGCGCATCT

**ACGCGT**ACGCGGCCGCTCGAGCAGAACTCATCTCAGAAGAGGATCTGGCAGCAAATGATATCCTGGATT  
ACAAGGATGACGACGATAAGGTTTAA

**Protein Sequence:** >RC200862 protein sequence  
Red=Cloning site Green=Tags(s)  
MLRPKALTQVLSQANTGGVQSTLLLNNEGSLLAYSGYGDTDARVTAASNIWAAAYDRNGNQAFNEDNLK  
FILMDCMEGRVAITRVANLLLCMYAKETVGFGLKAKAQALVQYLEEPLTQVAAS

**TR**TRPLEQKLISEEDLAANDILDYKDDDDKV

**Chromatograms:** [https://cdn.origene.com/chromatograms/mk6429\\_a03.zip](https://cdn.origene.com/chromatograms/mk6429_a03.zip)

**Restriction Sites:** SgfI-MluI



[View online »](#)

**Cloning Scheme:**


**ACCN:** NM\_014017

**ORF Size:** 375 bp

**OTI Disclaimer:** The molecular sequence of this clone aligns with the gene accession number as a point of reference only. However, individual transcript sequences of the same gene can differ through naturally occurring variations (e.g. polymorphisms), each with its own valid existence. This clone is substantially in agreement with the reference, but a complete review of all prevailing variants is recommended prior to use. [More info](#)

**OTI Annotation:** This clone was engineered to express the complete ORF with an expression tag. Expression varies depending on the nature of the gene.

**Components:** The ORF clone is ion-exchange column purified and shipped in a 2D barcoded Matrix tube containing 10ug of transfection-ready, dried plasmid DNA (reconstitute with 100 ul of water).

**Reconstitution Method:**

1. Centrifuge at 5,000xg for 5min.
2. Carefully open the tube and add 100ul of sterile water to dissolve the DNA.
3. Close the tube and incubate for 10 minutes at room temperature.
4. Briefly vortex the tube and then do a quick spin (less than 5000xg) to concentrate the liquid at the bottom.
5. Store the suspended plasmid at -20°C. The DNA is stable for at least one year from date of shipping when stored at -20°C.

**RefSeq:** [NM\\_014017.4](#)

**RefSeq Size:** 699 bp

**RefSeq ORF:** 378 bp

**Locus ID:** 28956

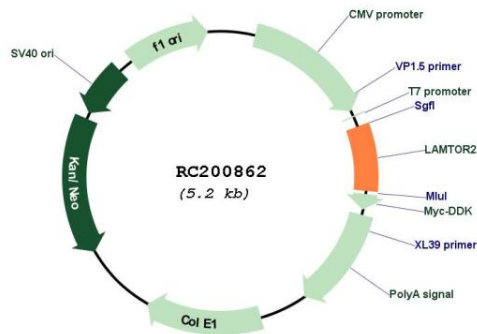
**UniProt ID:** [Q9Y2Q5](#)

**Cytogenetics:** 1q22

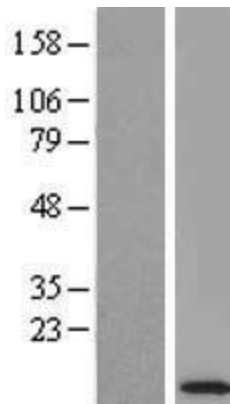
**MW:** 13.5 kDa

**Gene Summary:** The product of this gene is highly conserved with a mouse protein associated with the cytoplasmic face of late endosomes and lysosomes. The mouse protein interacts with MAPK scaffold protein 1, a component of the mitogen-activated protein kinase pathway. In humans, a mutation in this gene has been associated with a primary immunodeficiency syndrome, and suggests a role for this protein in endosomal biogenesis. Multiple transcript variants encoding different isoforms have been found for this gene. [provided by RefSeq, Feb 2009]

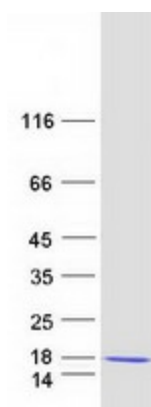
**Product images:**



Circular map for RC200862



Western blot validation of overexpression lysate (Cat# [LY415522]) using anti-DDK antibody (Cat# [TA50011-100]). Left: Cell lysates from untransfected HEK293T cells; Right: Cell lysates from HEK293T cells transfected with RC200862 using transfection reagent MegaTran 2.0 (Cat# [TT210002]).



Coomassie blue staining of purified LAMTOR2 protein (Cat# [TP300862]). The protein was produced from HEK293T cells transfected with LAMTOR2 cDNA clone (Cat# RC200862) using MegaTran 2.0 (Cat# [TT210002]).