

Product datasheet for **RC200858**

TIMM22 (NM_013337) Human Tagged ORF Clone

Product data:

Product Type: Expression Plasmids
Product Name: TIMM22 (NM_013337) Human Tagged ORF Clone
Tag: Myc-DDK
Symbol: TIMM22
Synonyms: COXPD43; TEX4; TIM22
Mammalian Cell Selection: Neomycin
Vector: pCMV6-Entry (PS100001)
E. coli Selection: Kanamycin (25 ug/mL)
ORF Nucleotide Sequence: >RC200858 ORF sequence
Red=Cloning site **Blue**=ORF **Green**=Tags(s)

TTTGTAAATACGACTCACTATAGGGCGGCCGGAATTCGTCGACTGGATCCGGTACCGAGGAGATCTGCC
GCC**CGATCGCC**

ATGGCGGCGGCCGCCCAATGCCGGAGGCTCGGCCCTGAGACAGCGGGTTCGCCGAAGCTCCGCTGC
AGTACAGCCTGCTCCTGCAGTACCTGGTGGTGACAAGCGTCAGCCCCGGCTCCTGGAGCCTGGGAGCCT
GGGCGGGATCCCAAGTCCAGCAAGAGTGAGGAGCAGAAGATGATCGAGAAGGCGATGGAAAGCTGCGCT
TTCAAGGCTGCGCTGGCTGCGTGGGAGGATTTGTCTTAGGAGGTGCATTGGGGTGTTCACGCTGGCA
TCGATACCAACGTGGGCTTTGACCCTAAGGATCCTTACCGTACACCGACTGCAAAAGAAGTGCTGAAAGA
CATGGGGCAGAGAGGAATGTCTATGCCAAAATTTCCGCCATTGTGGGAGCCATGTTTTCTGTACTGAG
TGTTTGATAGAATCTTACCGGGGAACATCAGACTGGAAGAACAGTGTCATCAGTGGCTGCATCACGGGAG
GAGCTATTGGTTTCAGAGCTGGCTTAAAGGCTGGGGCCATTGGTTGTGGAGGTTTTGCTGCTTTCTCTGC
TGGATTGATTATTACCTCCGG

ACGCGTACGCGGCCGCTCGAGCAGAACTCATCTCAGAAGAGGATCTGGCAGCAAATGATATCCTGGATT
ACAAGGATGACGACGATAAGGTTTAA

Protein Sequence: >RC200858 protein sequence
Red=Cloning site **Green**=Tags(s)

MAAAPNAGGSAPETAGSAEAPLQYSLLLQYLVGDKRQPRLLPGSLGGIPSPAKSEEQKMIEKAMESCA
FKAALACVGGFVLGGAFGVFTAGIDTNVGFDPKDPYRTPTAKEVLKDMGQRGMSYAKNFAIVGAMFSCTE
CLIESYRGTSDWKNSVISGCITGGAIGFRAGLKAGAIGCGGAFAFSAIDYYLR

TRTRPLEQKLISEEDLAANDILDYKDDDDKV



[View online »](#)

Chromatograms: https://cdn.origene.com/chromatograms/mk6384_g10.zip

Restriction Sites: SgfI-MluI

Cloning Scheme:



ACCN: NM_013337

ORF Size: 582 bp

OTI Disclaimer: The molecular sequence of this clone aligns with the gene accession number as a point of reference only. However, individual transcript sequences of the same gene can differ through naturally occurring variations (e.g. polymorphisms), each with its own valid existence. This clone is substantially in agreement with the reference, but a complete review of all prevailing variants is recommended prior to use. [More info](#)

OTI Annotation: This clone was engineered to express the complete ORF with an expression tag. Expression varies depending on the nature of the gene.

Components: The ORF clone is ion-exchange column purified and shipped in a 2D barcoded Matrix tube containing 10ug of transfection-ready, dried plasmid DNA (reconstitute with 100 ul of water).

Reconstitution Method:

1. Centrifuge at 5,000xg for 5min.
2. Carefully open the tube and add 100ul of sterile water to dissolve the DNA.
3. Close the tube and incubate for 10 minutes at room temperature.
4. Briefly vortex the tube and then do a quick spin (less than 5000xg) to concentrate the liquid at the bottom.
5. Store the suspended plasmid at -20°C. The DNA is stable for at least one year from date of shipping when stored at -20°C.

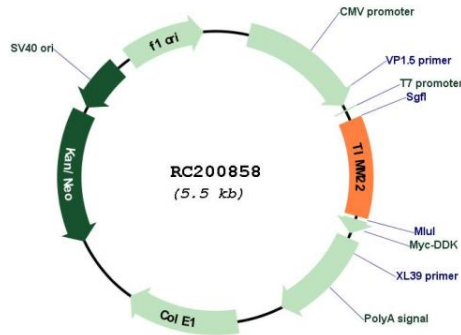
Note: Plasmids are not sterile. For experiments where strict sterility is required, filtration with 0.22um filter is required.

RefSeq: [NM_013337.4](#)

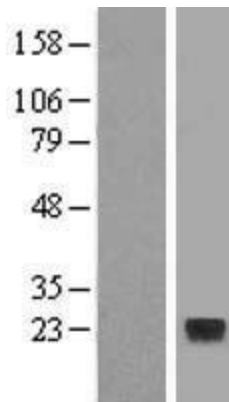
RefSeq Size: 1691 bp

RefSeq ORF:	585 bp
Locus ID:	29928
UniProt ID:	Q9Y584
Cytogenetics:	17p13.3
Domains:	Tim17
Protein Families:	Transmembrane
MW:	20 kDa
Gene Summary:	Multipass transmembrane proteins are brought into mitochondria and inserted into the mitochondrial inner membrane by way of the TIM22 complex. This complex has six subunits and is a twin-pore translocase. The protein encoded by this gene is a subunit of TIM22 and represents the voltage-activated and signal-gated channel. [provided by RefSeq, Jul 2016]

Product images:



Circular map for RC200858



Western blot validation of overexpression lysate (Cat# [LY415643]) using anti-DDK antibody (Cat# [TA50011-100]). Left: Cell lysates from untransfected HEK293T cells; Right: Cell lysates from HEK293T cells transfected with RC200858 using transfection reagent MegaTran 2.0 (Cat# [TT210002]).