

Product datasheet for RC200855

POLR2F (NM_021974) Human Tagged ORF Clone

Product data:

Product Type: Expression Plasmids
Product Name: POLR2F (NM_021974) Human Tagged ORF Clone
Tag: Myc-DDK
Symbol: POLR2F
Synonyms: HRBP14.4; POLRF; RPABC2; RPABC14.4; RPB6; RPB14.4; RPC15
Mammalian Cell Selection: Neomycin
Vector: pCMV6-Entry (PS100001)
E. coli Selection: Kanamycin (25 ug/mL)
ORF Nucleotide Sequence: >RC200855 ORF sequence
 Red=Cloning site Blue=ORF Green=Tags(s)

TTTTGTAATACGACTCACTATAGGGCGCCGGGAATTCGTCGACTGGATCCGGTACCGAGGAGATCTGCC
GCC**CGATCGCC**

ATGTCAGACAACGAGGACAATTTTGTGGCGACGACTTTGATGATGTGGAGGAGGATGAAGGGCTAGATG
ACTTGGAGAATGCCGAAGAGGAAGGCCAGGAGAATGTCGAGATCCTCCCCTCTGGGGAGCGACCCGAGGC
CAACCAGAAGCGAATCACCACACCATACATGACCAAGTACGAGCGAGCCCGCTGCTGGGACCCGAGCG
CTCCAGATTGCGATGTGTGCCCTGTGATGGTGGAGCTGGAGGGGAGACAGATCCTCTGCTCATTGCCA
TGAAGGAACCAAGGCCGAAAGATCCCCATCATTCGCCGTTACCTGCCAGATGGGAGCTATGAAGA
CTGGGGGTGGACGAGCTCATCACCGAC

ACGCGTACGCGGCCGCTCGAGCAGAACTCATCTCAGAAGAGGATCTGGCAGCAAATGATATCCTGGATT
ACAAGGATGACGACGATAAGGTTTAA

Protein Sequence: >RC200855 protein sequence
 Red=Cloning site Green=Tags(s)
 MSDNEDNFDGDDFDDVEEDEGLDDLENAEEEGQENVEILPSGERPQANQKRITTPYMTKYERARVLGTRA
 LQIAMCAPVMVELEGETDPLLIAMKELKARKIPIIIRRYLPDGSYEDWGVDELIITD

TRTRPLEQKLISEEDLAANDILDYKDDDDKV

Chromatograms: https://cdn.origene.com/chromatograms/mk6393_h08.zip

Restriction Sites: SgfI-MluI



[View online »](#)

Cloning Scheme:



ACCN: NM_021974

ORF Size: 381 bp

OTI Disclaimer: The molecular sequence of this clone aligns with the gene accession number as a point of reference only. However, individual transcript sequences of the same gene can differ through naturally occurring variations (e.g. polymorphisms), each with its own valid existence. This clone is substantially in agreement with the reference, but a complete review of all prevailing variants is recommended prior to use. [More info](#)

OTI Annotation: This clone was engineered to express the complete ORF with an expression tag. Expression varies depending on the nature of the gene.

Components: The ORF clone is ion-exchange column purified and shipped in a 2D barcoded Matrix tube containing 10ug of transfection-ready, dried plasmid DNA (reconstitute with 100 ul of water).

- Reconstitution Method:**
1. Centrifuge at 5,000xg for 5min.
 2. Carefully open the tube and add 100ul of sterile water to dissolve the DNA.
 3. Close the tube and incubate for 10 minutes at room temperature.
 4. Briefly vortex the tube and then do a quick spin (less than 5000xg) to concentrate the liquid at the bottom.
 5. Store the suspended plasmid at -20°C. The DNA is stable for at least one year from date of shipping when stored at -20°C.

Note: Plasmids are not sterile. For experiments where strict sterility is required, filtration with 0.22um filter is required.

RefSeq: [NM_021974.5](#)

RefSeq Size: 2109 bp

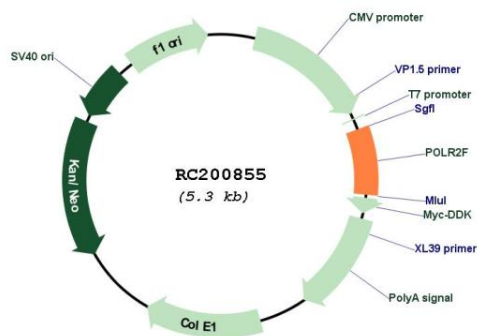
RefSeq ORF: 384 bp

Locus ID: 5435
 UniProt ID: [P61218](#)
 Cytogenetics: 22q13.1

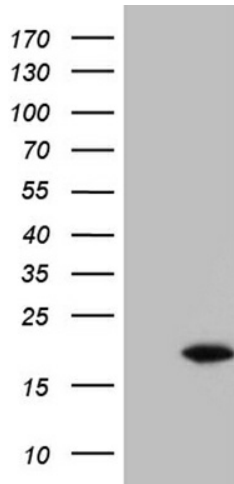
Domains: RNA_pol_Rpb6
 Protein Families: Transcription Factors
 Protein Pathways: Huntington's disease, Metabolic pathways, Purine metabolism, Pyrimidine metabolism, RNA polymerase
 MW: 14.5 kDa

Gene Summary: This gene encodes the sixth largest subunit of RNA polymerase II, the polymerase responsible for synthesizing messenger RNA in eukaryotes. In yeast, this polymerase subunit, in combination with at least two other subunits, forms a structure that stabilizes the transcribing polymerase on the DNA template. Alternative splicing results in multiple transcript variants. [provided by RefSeq, Jul 2014]

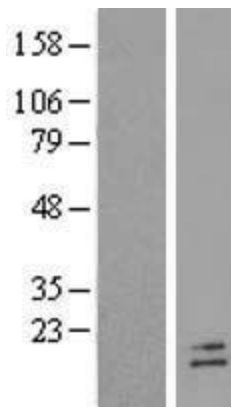
Product images:



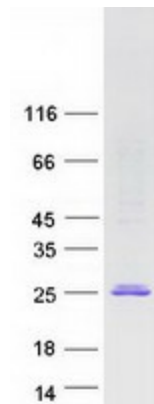
Circular map for RC200855



HEK293T cells were transfected with the pCMV6-ENTRY control (Cat# [PS100001], Left lane) or pCMV6-ENTRY POLR2F (Cat# RC200855, Right lane) cDNA for 48 hrs and lysed. Equivalent amounts of cell lysates (5 ug per lane) were separated by SDS-PAGE and immunoblotted with anti-POLR2F (1:2000) (Cat# [TA807758]). Positive lysates [LY411849] (100ug) and [LC411849] (20ug) can be purchased separately from OriGene.



Western blot validation of overexpression lysate (Cat# [LY411849]) using anti-DDK antibody (Cat# [TA50011-100]). Left: Cell lysates from untransfected HEK293T cells; Right: Cell lysates from HEK293T cells transfected with RC200855 using transfection reagent MegaTran 2.0 (Cat# [TT210002]).



Coomassie blue staining of purified POLR2F protein (Cat# [TP300855]). The protein was produced from HEK293T cells transfected with POLR2F cDNA clone (Cat# RC200855) using MegaTran 2.0 (Cat# [TT210002]).