

Product datasheet for **RC200852**

ZNF426 (NM_024106) Human Tagged ORF Clone

Product data:

Product Type:	Expression Plasmids
Product Name:	ZNF426 (NM_024106) Human Tagged ORF Clone
Tag:	Myc-DDK
Symbol:	ZNF426
Synonyms:	K-RBP
Mammalian Cell Selection:	Neomycin
Vector:	pCMV6-Entry (PS100001)
E. coli Selection:	Kanamycin (25 ug/mL)



[View online »](#)

ORF Nucleotide Sequence:

>RC200852 ORF sequence
 Red=Cloning site Blue=ORF Green=Tags(s)

TTTTGTAATACGACTCACTATAGGGCGGCCGGGAATTCGTCGACTGGATCCGGTACCGAGGAGATCTGCC
 GCC**CGGATCGCC**

ATGGCAGCTGCTGATTTGTCCCATGGACATTATCTTTCTGGGACCCAGTTTGCCTTCATGAAGAAAAGA
 CACCAGCAGGAAGAATAGTGGCTGACTGCCTAACAGATTGTTATCAGGATTCAGTGACCTTTGACGATGT
 GGCTGTGGACTTCACCCAGGAGGAGTGGACTTTACTGGACTCAACTCAGAGAAGCCTCTACAGTGACGTG
 ATGCTGGAGAACTACAAGAACTGGCCACAGTAGGAGGTCAGATCATCAAACCCAGTCTAATCTCTTGGT
 TGGAAACAAGAAGAGTCAAGGACAGTTCAGGGAGGAGTTCTCCAAGGATGGGAAAATGCGACTTGAAACCCA
 GTGGTCTATACTTCAGCAGGACTTTTTGAGGGGTGAGACATCCATTGGGATAACAATTGGAAGGAAAAAC
 AATGGAAGGGAACCTGTGACTGTGAGCAATGTGGAGAAGTCTTCAGTGAACACTCATGCCTTAAGACGC
 ACGTGAGAACTCAAAGTACAGGGAACACTCATGACTGTAATCAGTATGGAAAAGATTTCTTACCCTGTG
 TGAGAAAACCTCTACTGGTGAGAAACTTTCTGAGTTTAATCAGAGTGAAAAATCTTCAGCCTGACACCA
 AATATTGTATACCAGAGAACTAGCACACAAGAAAAGTCATTTGAATGTAGTCACTGTGGAAAATCCTTCA
 TTAATGAGTCATACCTTCAGGCACATATGAGAACTCACAATGGAGAAAACTCTACGAATGGAGGAATTA
 TGGGCCAGGTTTTATTGACTCTACAAGCCTTTCTGTGCTTATAGAAAACCTCAATGCAAAAAAGCCCTAC
 AAATGTAAGGAATGTGGAAAAGGCTATAGATACCCAGCCTACCTCAGTATTCACATGCGAACCCACACTG
 GGGAGAAAACCATATGAATGTAAGGAATGTGGAAAAGCCTTCAATTATTCCAACCTATTCAGATACATGG
 AAGAACTCACACTGGAGAGAAAACCTATGTATGTAAGGAATGTGGAAAAGCCTTCACTCAGTACTCGGGC
 CTTAGTATGCATGTACGATCTCACAGTGGAGACAAGCCCTATGAATGTAAGGAATGTGGAAAACCTTCC
 TTACATCCTCAGCCTTATTCAACATATAAGAACTCACACTGGAGAGAAGCCTTTTGTATGTGTTGAATG
 TGGGAAAAGCCTTTGCAGTTTCTCAAATCTTAGTGGACATTTGAGAACTCACACTGAAGAGAAGGCCTGT
 GAGTGTAAAGATATGTGGGAAAGTATTTGGGTATCCCTCATGTCTTAATAATCACATGCGAACGCACAGTG
 CCCAGAAAACCATACACCTGTAAGGAATGTGGGAAAGCCTTTAACTATTCCACCCACCTTAAAATTACAT
 GCGAATCCACACTGGAGAAAAACCTATGAGTGTAAACAATGTGGAAAAGCCTTCACTCATTCCAGTTCA
 TTTCAAATACATGAAAGGACTCACACTGGAGAGAAAACCTATGAATGCAAGGAGTGTGGGAAAAGCCTTCA
 CGTGTTCAGTTCCTTTAGAATTCATGAAAAACTCACACAGAAGAGAAAACCTATAAATGTCAGCAATG
 CGGAAAAGCTTACAGTCATCCCCGTTCACTTCGAAGACATGAACAAATTCAC

ACGCGTACGCGGCCGCTCGAGCAGAAACTCATCTCAGAAGAGGATCTGGCAGCAAATGATATCCTGGATT
 ACAAGGATGACGACGATAAGGTTTAA

Protein Sequence:

>RC200852 protein sequence
 Red=Cloning site Green=Tags(s)

MAAADL SHGHYLSGDPVCLHEEKT PAGRIVADCLTDCYQDSVTFDDVAVDFTQEEWTL LDSTQRSLSYSDV
 MLENYKNLATVGGQIIKPSLISWLEQEE SRTVQGGVLQGWEMRLETQWSILQQDFLRGQTSIGIQLEKHK
 NRELCDCEQCGEVFSEHSLKTHVRTQSTGNTHDCNQYKDFLTLCEKTSTGEKLSFNQSEKIFSLTP
 NIVYQRTSTQEKSFEC SHCGKSFINESYLQAHMRTHNKEKLYEWRNYGPGFIDSTLSVL IETLNAKPPY
 KCKECKGYRYPAYLSIHMRTHTGEKPYECKECKGAFNYSNSFQIHGRTHTEKPYVCKECKGAFTQYSG
 LSMHVRSHSGDKPYECKECKSFLTSSRLIQHIRTHTGEKPFVCECGKAFVSSNLSGHLRTHTEEKAC
 ECKICGKVFGYPSCLNNHMRTHSAQKPYTCKECKGAFNYSNTHLKIHMRIHTGEKPYECKQCGKAFSHSSS
 FQIHERHTHTGEKPYECKECKGAFTCSSSFRIHEKTHTEEKPYKQCQCGKAYSHPRSLRRHEQIH

TRTRPLEQKLI SEEDLAANDILDYKDDDDKV

Chromatograms:

https://cdn.origene.com/chromatograms/mk6393_e03.zip

Restriction Sites:

Sgfl-Mlul

Cloning Scheme:

Cloning sites used for ORF Shutting:



* The last codon before the Stop codon of the ORF

ACCN: NM_024106

ORF Size: 1662 bp

OTI Disclaimer: The molecular sequence of this clone aligns with the gene accession number as a point of reference only. However, individual transcript sequences of the same gene can differ through naturally occurring variations (e.g. polymorphisms), each with its own valid existence. This clone is substantially in agreement with the reference, but a complete review of all prevailing variants is recommended prior to use. [More info](#)

OTI Annotation: This clone was engineered to express the complete ORF with an expression tag. Expression varies depending on the nature of the gene.

Components: The ORF clone is ion-exchange column purified and shipped in a 2D barcoded Matrix tube containing 10ug of transfection-ready, dried plasmid DNA (reconstitute with 100 ul of water).

- Reconstitution Method:**
1. Centrifuge at 5,000xg for 5min.
 2. Carefully open the tube and add 100ul of sterile water to dissolve the DNA.
 3. Close the tube and incubate for 10 minutes at room temperature.
 4. Briefly vortex the tube and then do a quick spin (less than 5000xg) to concentrate the liquid at the bottom.
 5. Store the suspended plasmid at -20°C. The DNA is stable for at least one year from date of shipping when stored at -20°C.

RefSeq: [NM_024106.3](#)
RefSeq Size: 2320 bp

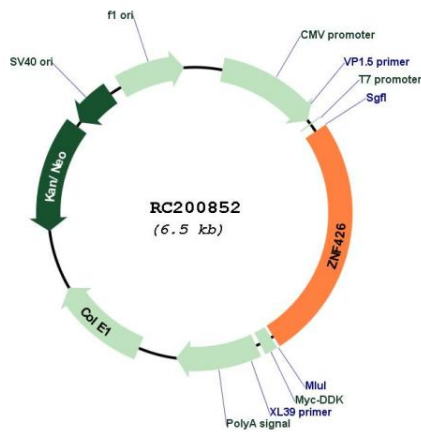
RefSeq ORF: 1665 bp

Locus ID: 79088

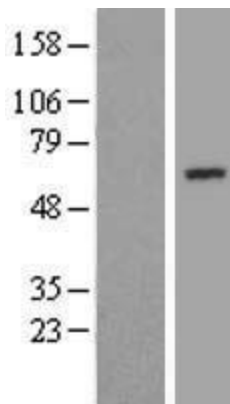
UniProt ID: [Q9BUY5](#)

Cytogenetics: 19p13.2
Domains: KRAB, zf-BED, zf-C2H2
Protein Families: Transcription Factors
MW: 63.1 kDa
Gene Summary: Kaposi's sarcoma-associated herpesvirus (KSHV) can be reactivated from latency by the viral protein RTA. The protein encoded by this gene is a zinc finger transcriptional repressor that interacts with RTA to modulate RTA-mediated reactivation of KSHV. While the encoded protein can repress KSHV reactivation, RTA can induce degradation of this protein through the ubiquitin-proteasome pathway to overcome the repression. Several transcript variants encoding different isoforms have been found for this gene. [provided by RefSeq, Dec 2015]

Product images:



Circular map for RC200852



Western blot validation of overexpression lysate (Cat# [LY411340]) using anti-DDK antibody (Cat# [TA50011-100]). Left: Cell lysates from untransfected HEK293T cells; Right: Cell lysates from HEK293T cells transfected with RC200852 using transfection reagent MegaTran 2.0 (Cat# [TT210002]).