

Product datasheet for **RC200837**

ZNF574 (NM_022752) Human Tagged ORF Clone

Product data:

Product Type:	Expression Plasmids
Product Name:	ZNF574 (NM_022752) Human Tagged ORF Clone
Tag:	Myc-DDK
Symbol:	ZNF574
Synonyms:	FP972
Mammalian Cell Selection:	Neomycin
Vector:	pCMV6-Entry (PS100001)
E. coli Selection:	Kanamycin (25 ug/mL)



[View online »](#)

ORF Nucleotide Sequence:

>RC200837 ORF sequence
 Red=Cloning site Blue=ORF Green=Tags(s)

TTTTGTAATACGACTCACTATAGGGCGGCCGGAATTCGTCGACTGGATCCGGTACCGAGGAGATCTGCC
 GCC**CGGATCGCC**

ATGACTGAGGAATCAGAGGAGACAGTCCTGTACATTGAGCACCGTATGTCTGCTCTGAGTGCAACCAGC
 TGTATGGATCACTGGAAGAGGTGCTTATGCACCAAACTCCCACGTGCCCCAGCAGCACTTTGAGCTGGT
 GGGCGTGGCTGATCCCGAGTCACTGTGGCCACAGACACAGCTTCAGGCACGGGCCCTCTATCAGACCCTT
 GTGCAGGAGAGCCAGTACCAGTGCCTGGAGTGTGGTCAACTGCTGATGTCACCCAGCCAGCTCCTGGAGC
 ACCAGGAGCTGCACCTGAAGATGATGGCACCCAGGAGGCAGTGCAGCTGAGCCATCACCTAAGGCACC
 ACCCTGAGCTCCAGCACCATCCACTACGAGTGTGTGGATTGCAAGGCTCTCTTTGCCAGCCAGGAGCTC
 TGGCTGAACCACCGCAGACGCACCTCCGGGCCACACCCACCAAGGCTCCTGCCCTGTTGTCTGGGGT
 CCCCAGTTGTTCTAGGGCTCCTGTGGCCAGGCCGAGTGGCTGTGGAGCACTCATACCGAAAGGCAGA
 AGAGGGTGGGGAAGGGGCGACTGTCCATCTGCCGCTGCCACCACCACTGAGGTAGTGACTGAGGTGGAG
 CTGCTCCTCTACAAGTGCTCTGAGTGTCCAGCTCTTCCAGCTGCCGGCGGATTCCTGGAGCACCAGG
 CCACTCACTTCCCTGCTCCTGTACCCGAGTCTCAGGAGCCTGCCTTACAGCAGGAGGTGCAGGCCTCGTC
 ACCTGCAGAGGTGCCTGTGTCTCAGCCTGACCCCTTGCCAGCTTCTGACCACAGTTACGAGCTGCGAAT
 GGTGAAGCCATTGGCGGGATCGCCGGGGGCGCAGGGCCCGGAGGAACAACAGTGGAGAAGCAGGCGGGG
 CAGCCACACAGGAGCTCTTCTGCTCAGCCTGTGACCAGCTCTTTCTCACCCACACAGCTACAGCAGCA
 CCTGCGGAGTCAACGGGAGGGCGTCTTAAAGTCCCCCTGTGCAGTCGTGTTCCCTAGCCCTCCAGT
 CTGGACCAGCACCTTGGAGACCATAGCAGCGAGTCACACTTCTGTGTAGACTGTGGCCTGGCCTTCG
 GCACAGAGGCCCTCCTCCTGGCCACCGCGAGCCACACCCCGAATCCTCTGCATTCATGTCATGTCATG
 GAAGACCTTTGTCAACCTTACCAAGTTCCTTTATCACCGCGTACTCATGGGGTAGGGGGTGTCCCTCTG
 CCCACAACACCAGTCCCACCAGAGGAACCTGTCAATTGGTTTTCCCTGAGCCAGCCCCAGCAGAGACTGGAG
 AGCCAGAGGCCCTGAGCCCCCTGTGTCTGAGGAGACCTCAGCAGGGCCCGCTGCCCCAGGCACCTACCG
 CTGCTCCTGTGCAGCCGTGAATTTGAAAGGCCCTTGACAGCTGACCCGGCACCAACGTTTTGTGCATCGG
 CTGGAGCGGCCATAAATGCAGCATTTGTGGCAAGATGTTCAAGAAGAAGTCTCACGTGCGTAACCACC
 TGCGCACACACAGGGGAGCGGCCCTTCCCCTGCCCTGACTGCTCCAAGCCCTCAACTCACCTGCCAA
 CCTGGCCCGCCACCGCTCACACACACAGGAGAGCGGCCCTACCGGTGTGGGACTGTGGCAAGGCTTTC
 ACGCAAAGCTCCACACTGAGGCAGCACCGCTTGGTGCATGCCAGCACTCCCCTACCGCTGCCAGGAAT
 GTGGGGTGCCTTTTACCGTCTTACCGCTGCTCATGCACCGCTACCATCACACAGGTGAATACCCCTA
 CAAGTGTGCGAGTGCCCCGCTCCTTCTGTGCGTGGCTGCTGGAGGTGCACCAGCTCGTGGTCCAT
 GCCGGGCGCCAGCCCCACCGTGCCCATCCTGTGGGGTGCCTTCCCCTCCTCACTGCGGCTCCGGGAGC
 ACCGCTGTGCAGCCGCTGCTGCCAGGCCCCACGGCGCTTTGAGTGTGGCACCTGTGGCAAGAAAGTGGG
 CTCAGTGTCTGACTGCAGGCACACGAGGCGGCCATGCAGTGTGGCCTGGAGAGGTCTGGTAAG
 GAGCCCCCTGCCCTCGAGCCCCACGGGCCACTCGTGCACCAGTTGCCTCTCCAGCAGCCCTTGAAGCA
 CTGCTACAGCATCCCCTGCGGCCCTGCCCGCCCGGGGTCTAGAGTGCAGCGAGTGAAGAAGCTGTT
 CAGCACAGAGACGTCACCTGCAGGTGCACCGCGCATCCACACAGGTGAGCGGCCATACCCATGTCCAGAC
 TGTGGCAAAGCGTTCCTGCAGAGTACCCACCTGAAAGACCACCGGCGCCTGCACACAGGTGAGCGGCCCT
 TTGCCTGTGAAGTGTGTGGCAAGGCCTTTGCCATCTCCATGCGCCTGGCAGAACATCGCCGCATCCACAC
 AGGCGAACGACCCTACTCCTGCCCTGACTGTGGCAAGAGCTACCGCTCCTTCTCCAACCTCTGGAAGCAC
 CGCAAGACCCATCAGCAGCAGCATCAGGCAGCTGTGCGGCAGCAGCTGGCAGAGGCGGAGGCTGCCGTTG
 GCCTGGCCGTATGGAGACTGCTGTGGAGGCGCTACCCCTGGTGGAAAGCCATTGAGATCTACCCTCTGGC
 CGAGGCTGAGGGGTCCAGATCAGTGGC

ACGCGTACGCGGCCGCTCGAGCAGAACTCATCTCAGAAGAGGATCTGGCAGCAAATGATATCCTGGATT
 ACAAGGATGACGACGATAAGGTTTAA

Protein Sequence:

>RC200837 protein sequence
 Red=Cloning site Green=Tags(s)

MTEESEETVLYIEHRYVCSECNQLYGSLEEVLHQNSHVPQQHFELVGVADPGVTATDTASGTGLYQTL
 VQESQYQCLECGQLLMSPSQLLEHQELHLKMMAPQEAVPAEPPKAPPLSSSTIHYECVDCKALFASQEL
 WLNHRQTHLRATPTKAPAPVVLGSPVVLGPPVVGQARVAVEHSYRKAEEGGEGATVPSAAATTEVTEVE
 LLLYKCECSQLFQLPADFLEHQATHFPAPVPESQEPALQQEVQASSPAEVPVPSQPDPLPASDHSYELRN
 GEAIGRDRRRRRARRNNSGEAGGAATQELFCSACDQLFLSPHQLQQHLRSHREGVFKCPLCSRVPFSPSS
 LDQHLGDHSSSESHFLCVDCLAFGTEALLLAHRAHTPNPLHSCPCGKTFVNLTKFLYHRRTHGVGGVPL
 PTPVPPEEPIGFPEPAPAETGEPEAPEPPVSEETSAGPAAPGTYRCLLCSREFGKALQLTRHQRFVHR
 LERRHKCSICGKMFKKKSHVRNHLRHTGERPFPDCKSPFNSPANLARHRLTHTGERPYRCGDCGKAF
 TQSSTLRQHRLVHAQHFPYRCQECGVRFRPYRLLMHRHYHTGEYPYKCRECPRSFLRLLELVHQLVVH
 AGRQPHRCPSCGAAPSSRLRREHRCAAAAAQAPRRFECGTCGKKVGSAAARLQAHEAAAAAGPGEVLAK
 EPPAPRAPRATRAPVASPAALGSTATASPAAPARRRGLECKKLFSTETSLQVHRIHTGERPYPCPD
 CGKAFRQSTHLKDHRRLLHTGERPFACEVCGKAFIISMRLAEHRIHTGERPYSCPDGKSYRSFNLWKH
 RKTHQQHQAAVRQQLAEAEAAVGLAVMETAVEALPLVEAIEIYPLAEAEVQISG

TRTRPLEQKLISEEDLAANDILDYKDDDDKV

Chromatograms:

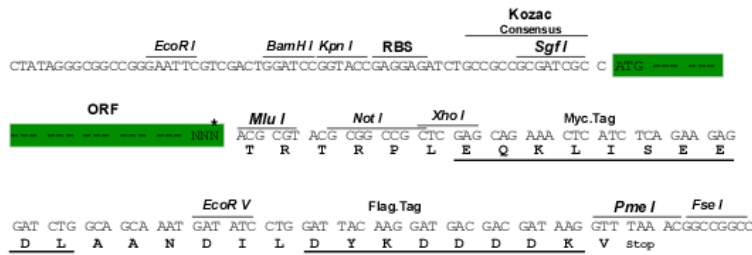
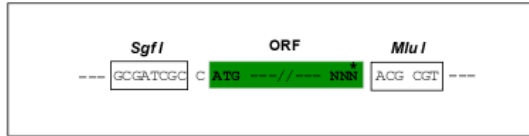
https://cdn.origene.com/chromatograms/mk6237_a04.zip

Restriction Sites:

Sgfl-MluI

Cloning Scheme:

Cloning sites used for ORF Shuttling:



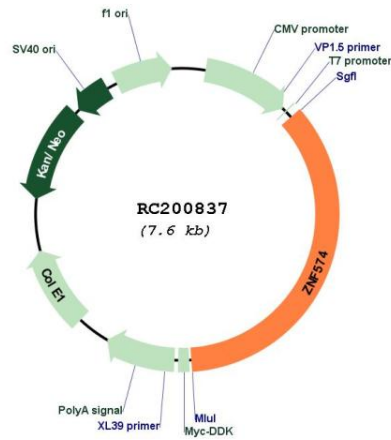
* The last codon before the Stop codon of the ORF

ACCN:

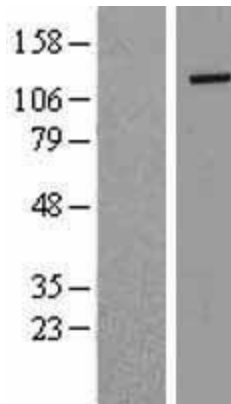
NM_022752

ORF Size:	2688 bp
OTI Disclaimer:	The molecular sequence of this clone aligns with the gene accession number as a point of reference only. However, individual transcript sequences of the same gene can differ through naturally occurring variations (e.g. polymorphisms), each with its own valid existence. This clone is substantially in agreement with the reference, but a complete review of all prevailing variants is recommended prior to use. More info
OTI Annotation:	This clone was engineered to express the complete ORF with an expression tag. Expression varies depending on the nature of the gene.
Components:	The ORF clone is ion-exchange column purified and shipped in a 2D barcoded Matrix tube containing 10ug of transfection-ready, dried plasmid DNA (reconstitute with 100 ul of water).
Reconstitution Method:	<ol style="list-style-type: none">1. Centrifuge at 5,000xg for 5min.2. Carefully open the tube and add 100ul of sterile water to dissolve the DNA.3. Close the tube and incubate for 10 minutes at room temperature.4. Briefly vortex the tube and then do a quick spin (less than 5000xg) to concentrate the liquid at the bottom.5. Store the suspended plasmid at -20°C. The DNA is stable for at least one year from date of shipping when stored at -20°C.
RefSeq:	NM_022752.6
RefSeq Size:	3167 bp
RefSeq ORF:	2691 bp
Locus ID:	64763
UniProt ID:	Q6ZN55
Cytogenetics:	19q13.2
Domains:	zf-C2H2
MW:	98.9 kDa
Gene Summary:	May be involved in transcriptional regulation.[UniProtKB/Swiss-Prot Function]

Product images:



Circular map for RC200837



Western blot validation of overexpression lysate (Cat# [LY411590]) using anti-DDK antibody (Cat# [TA50011-100]). Left: Cell lysates from untransfected HEK293T cells; Right: Cell lysates from HEK293T cells transfected with RC200837 using transfection reagent MegaTran 2.0 (Cat# [TT210002]).