

## Product datasheet for **RC200836**

### **GTPBP3 (NM\_032620) Human Tagged ORF Clone**

#### **Product data:**

Product Type:	Expression Plasmids
Product Name:	GTPBP3 (NM_032620) Human Tagged ORF Clone
Tag:	Myc-DDK
Symbol:	GTPBP3
Synonyms:	COXPD23; GTPBG3; MSS1; MTGP1; THDF1
Mammalian Cell Selection:	Neomycin
Vector:	pCMV6-Entry (PS100001)
E. coli Selection:	Kanamycin (25 ug/mL)



[View online »](#)

**ORF Nucleotide Sequence:**

>RC200836 ORF sequence  
 Red=Cloning site Blue=ORF Green=Tags(s)

TTTTGTAATACGACTCACTATAGGGCGGCCGGAATTCGTCGACTGGATCCGGTACCGAGGAGATCTGCC  
 GCC**GCGATCGCC**

ATGTGGCGGGGGCTTTGGACCCTGGCGGCCAAGCGGCACGTGGGCCTCGCAGATTGTGCACGCGCCGGA  
 GCAGCGCGCACCCAGCCCCGGCTCCGGCGCCACCATCTTCGCGTAAGCTCTGGCCAAGGCCGCTGCGG  
 CATCGCAGTGATCCGGACCAGCGCCCCGCCAGCGGCCACGCCCTCCGAATTCTCACAGCACCCGAGAC  
 CTGCCCTTGTCTCGCCACGCCAGCCTGCGCCTGCTCAGCGATCCCCGCTCCGGGGAGCCTCTGGACCGCG  
 CACTGGTGTCTGGTTCCAGGTCCCAGAGTTTACCAGGTGAGGACTGCGTGGAGTTCCACGTGCATGG  
 AGGCCCGCAGTGGTGGCGGCTCTGCAGGCCCTGGGCAGCGTCCAGGGCTTCGACCGCGGAGGCA  
 GCGAGTTACCAGACGGCGTTCGCCAATGGGAAGCTGAACCTGACCGAAGTGGAGGGGCTGGCGGACC  
 TTATCCACGCGGAAACAGAGGCGCAGCGCGCCAGGCCCTCAGGCAGCTGGACGGAGAGCTGGGCCACCT  
 CTGCCGTGGCTGGCCGAGACCCCTACCAAAGCTCTGGCCACGTGGAGGCCTATATCGATTTCCGGCGAG  
 GATGACAACCTGGAGGAGGGGTCTGGAGCAAGCCGACATCGAAGTACGGGCACCTGCAGGTGGCCCTGG  
 GTGCACATCTACGAGATGCCAGGCGCGGCAGAGGCTCCGCTCAGGGGTGCACGTAGTGGTCACTGGACC  
 CCCAATGCGGGCAAGAGCAGCCTAGTGAACCTGCTCAGTCGGAAGCCTGTGTCCATCGTGTCCCGGAG  
 CCAGGGACCACCCGTGACGTGCTGGAGACCCAGTCGACCTGGCCGATTTCCTGTGCTGCTGAGCGACA  
 CGGCTGGGTTGCGGGAGGGCGTGGGGCCCGTGGAGCAGGAGGGCGTGGCGCGCCCGGGAGAGGCTAGA  
 GCAGGCTGACCTATTCTGGCCATGCTGGATGCTTCTGACCTGGCCTCTCCCTCCAGTTGCAACTTCCTG  
 GCCACCGTCGTAGCCTCTGTGGGAGCCCAGAGCCCAGTGACAGCAGCCAGCACCTCCTCCTGGTGTGTC  
 ACAAGTCGGACCTGCTGTCCCGGAGGGCCAGGTCCCGTCTGACCTGCCCGCCGACCTGCTGTGTC  
 CTGTCTGACGGGAGAGGGGCTGGACGGCCTCCTGGAGGCGCTGAGGAAGGAGCTAGCTGCAGTGTGTGGG  
 GACCCGTCACAGATCCCCGCTGCTGACCCGAGCAAGGCACCAGCACCTCCAGGGTTGCTGGATG  
 CCCTCGGCCACTACAAGCAGTCAAAGACCTGGCCCTGGCGGCAGAGGCGCTGCGGGTGGCCCGGGTCA  
 CCTGACCCGGCTCACAGGTGGAGGGGTACCGAGGAGATCCTGGACATCATCTCCAGGACTTCTGTGTG  
 GGCAAG

**ACGCGT**ACGCGGCCGCTCGAGCAGAACTCATCTCAGAAGAGGATCTGGCAGCAAATGATATCCTGGATT  
 ACAAGGATGACGACGATAAGGTTTAA

**Protein Sequence:**

>RC200836 protein sequence  
 Red=Cloning site Green=Tags(s)

MWRGLWTLAAQAARGPRRLCTRRSSGAPAPGSGATIFALSSGQGRCGIAVIRTSGPASGHALRILTAPRD  
 LPLARHASLRLLSDPRSGEPLDRALVLFPGPQSFTGEDCVFHVHGGPAAVSGVLQALGSVPGLRPAEA  
 GEFTRRAFANGKLNLEVEGLADLIHAETEAQRQALRQLDGLGHLCRGWAETLTKALAHVEAYIDFGE  
 DDNLEEGVLEQADIEVRALQVALGAHLRDARRQRLRSGVHVVTGPPNAGKSSLVNLRSRKPVSIVSPE  
 PGTTRDVLETPVDLAGFPVLLSDTAGLREGVGPVEQEGVRRARERLEQADLILAMLDAASDLASPSSCNFL  
 ATVVASVGAQSPSSQHLLLVLNKSDLLSPEGPGPDLPPhLLL SCLTGEGLDGLLEALRKELAAVCG  
 DPSTDPPLLTRARHQHHLQGCLDALGHYKQSKDLALAAEALRVARGHLTRLTGGGGTEEILDIIFQDFCV  
 GK

**TRTRPLEQKLI**SEEDLAANDILDYKDDDDKV

**Chromatograms:**

[https://cdn.origene.com/chromatograms/mk6418\\_a07.zip](https://cdn.origene.com/chromatograms/mk6418_a07.zip)

**Restriction Sites:**

Sgfl-MluI

**Cloning Scheme:**


**ACCN:** NM\_032620

**ORF Size:** 1476 bp

**OTI Disclaimer:** The molecular sequence of this clone aligns with the gene accession number as a point of reference only. However, individual transcript sequences of the same gene can differ through naturally occurring variations (e.g. polymorphisms), each with its own valid existence. This clone is substantially in agreement with the reference, but a complete review of all prevailing variants is recommended prior to use. [More info](#)

**OTI Annotation:** This clone was engineered to express the complete ORF with an expression tag. Expression varies depending on the nature of the gene.

**Components:** The ORF clone is ion-exchange column purified and shipped in a 2D barcoded Matrix tube containing 10ug of transfection-ready, dried plasmid DNA (reconstitute with 100 ul of water).

- Reconstitution Method:**
1. Centrifuge at 5,000xg for 5min.
  2. Carefully open the tube and add 100ul of sterile water to dissolve the DNA.
  3. Close the tube and incubate for 10 minutes at room temperature.
  4. Briefly vortex the tube and then do a quick spin (less than 5000xg) to concentrate the liquid at the bottom.
  5. Store the suspended plasmid at -20°C. The DNA is stable for at least one year from date of shipping when stored at -20°C.

**RefSeq:** [NM\\_032620.4](#)

**RefSeq Size:** 2612 bp

**RefSeq ORF:** 1479 bp

**Locus ID:** 84705

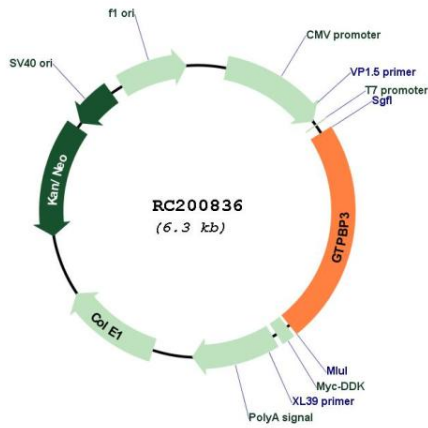
**UniProt ID:** [Q969Y2](#)

**Cytogenetics:** 19p13.11

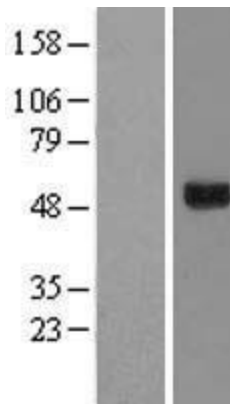
**MW:** 52 kDa

**Gene Summary:** This locus encodes a GTP-binding protein. The encoded protein is localized to the mitochondria and may play a role in mitochondrial tRNA modification. Polymorphisms at this locus may be associated with severity of aminoglycoside-induced deafness, a disease associated with a mutation in the 12S rRNA. Alternatively spliced transcript variants encoding different isoforms have been described. [provided by RefSeq, Sep 2010]

**Product images:**



Circular map for RC200836



Western blot validation of overexpression lysate (Cat# [LY410007]) using anti-DDK antibody (Cat# [TA50011-100]). Left: Cell lysates from untransfected HEK293T cells; Right: Cell lysates from HEK293T cells transfected with RC200836 using transfection reagent MegaTran 2.0 (Cat# [TT210002]).



Coomassie blue staining of purified GTPBP3 protein (Cat# [TP300836]). The protein was produced from HEK293T cells transfected with GTPBP3 cDNA clone (Cat# RC200836) using MegaTran 2.0 (Cat# [TT210002]).