

Product datasheet for **RC200830**

METRN (NM_024042) Human Tagged ORF Clone

Product data:

Product Type:	Expression Plasmids
Product Name:	METRN (NM_024042) Human Tagged ORF Clone
Tag:	Myc-DDK
Symbol:	METRN
Synonyms:	C16orf23; c380A1.2
Mammalian Cell Selection:	Neomycin
Vector:	pCMV6-Entry (PS100001)
E. coli Selection:	Kanamycin (25 ug/mL)
ORF Nucleotide Sequence:	>RC200830 representing NM_024042 Red=Cloning site Blue=ORF Green=Tags(s)

TTTTGTAATACGACTCACTATAGGGCGGCCGGAATTCGTCGACTGGATCCGGTACCGAGGAGATCTGCC
GCC**CGATCGCC**

ATGGGGTCCCGGCCGGCGCTGCTCTGCGCGCTGTGCTGCGGCTCCTGGCCCCGGCTGCCCGCGCCG
GCTACTCCGAGGAGCGCTGCAGCTGGAGGGGCAGCGCCCTACCCAGGAGCCCGCAGCGTGGGGCAGT
GGCCCTGGCTGTGCGGAGGGCGCGTTGAGTGGCTGTACCCGGCTGGGGCGCTGCGCTGACCCTGGC
GGCCCCGATCCCAGAGCGCGGCCCGGCATCGCTGTCTGCGGCCGGTGGGCCCTTCGCGGGCGCCAGG
TCTTCGCGGAGCGCGCAGGGGGCCCTGGAGCTGCTGTGGCCGAGGGCCGGGCCCGGCAGGGGGCCG
CTGCGTGCCTGGGGTCCCCGCGAGCGCCGGGCCCTTTCCTGCAGGCCACGCCGACCAGGACATCAGC
CGCCCGTGGCCGCTTCCGCTTTGAGCTGCGCGAGGACGGGCGCCCCGAGCTGCCCCCGCAGGCCACG
GTCTCGGCGTAGACGGTGCCTGCAGGCCCTGCAGCGACGCTGAGCTGCTCCTGGCCGATGCACCAGCGA
CTTCGTAATTCACGGGATCATCCATGGGGTCAACCATGACGTGGAGTGCAGGAGTGTGTCACTACTGTG
GTGGCCGCCCGTGTCTCCGCCAGACACCGCCGCTGTTCCAGGCGGGGCGATCCGGGGACCAGGGGCTGA
CCTCCATTCGTACCCACTGCGCTGTGGCGTCCACCCGGGCCAGGCACCTTCTCTTATGGGCTGGAG
CCGCTTTGGGGAGGCCCGGCTGGGCTGTGCCCCACGATTCAGGAGTTCGCGCGTGCCTACGAGGCTGCC
CGTGTGCCACCTCCACCCCTGCGAGGTGGCGCTGCAC

ACGCGTACGCGGCCGCTCGAGCAGAAACTCATCTCAGAAGAGGATCTGGCAGCAAATGATATCCTGGATT
ACAAGGATGACGACGATAAGGTTTAA



[View online »](#)

Protein Sequence: >RC200830 representing NM_024042
Red=Cloning site Green=Tags(s)

MGFPAAALLCALCCGLLAPAARAGYSEERCSWRGSGLTQEPGSVGQLALACAEGAVEWLYPAGALRLTLG
 GPDPRARPGIACLRPVRPFAGAQVFAERAGGALELLLAEAGPGPAGGRVCVRWGPERRRFLQATPHQDIS
 RRVAARFRELREDGRPELPPQAHGLGVDGACRPCSDAELLAACTSDFVIHGIHGVTHDVELQESVITV
 VAARVLRQTPPLFQAGRSGDQGLTSIRTPLRCGVHPGPGTFLFMGWSRFGEARLGCAPRFQEFRRAYEAA
 RAAHLHPCEVALH

TRTRPLEQKLISEEDLAANDILDYKDDDDKV

Chromatograms: https://cdn.origene.com/chromatograms/mg4202_b09.zip

Restriction Sites: SgfI-MluI

Cloning Scheme:



ACCN: NM_024042

ORF Size: 879 bp

OTI Disclaimer: The molecular sequence of this clone aligns with the gene accession number as a point of reference only. However, individual transcript sequences of the same gene can differ through naturally occurring variations (e.g. polymorphisms), each with its own valid existence. This clone is substantially in agreement with the reference, but a complete review of all prevailing variants is recommended prior to use. [More info](#)

OTI Annotation: This clone was engineered to express the complete ORF with an expression tag. Expression varies depending on the nature of the gene.

Components: The ORF clone is ion-exchange column purified and shipped in a 2D barcoded Matrix tube containing 10ug of transfection-ready, dried plasmid DNA (reconstitute with 100 ul of water).

Reconstitution Method:

1. Centrifuge at 5,000xg for 5min.
2. Carefully open the tube and add 100ul of sterile water to dissolve the DNA.
3. Close the tube and incubate for 10 minutes at room temperature.
4. Briefly vortex the tube and then do a quick spin (less than 5000xg) to concentrate the liquid at the bottom.
5. Store the suspended plasmid at -20°C. The DNA is stable for at least one year from date of shipping when stored at -20°C.

RefSeq: [NM_024042.4](#)

RefSeq Size: 1109 bp

RefSeq ORF: 882 bp

Locus ID: 79006

UniProt ID: [Q9UJH8](#)

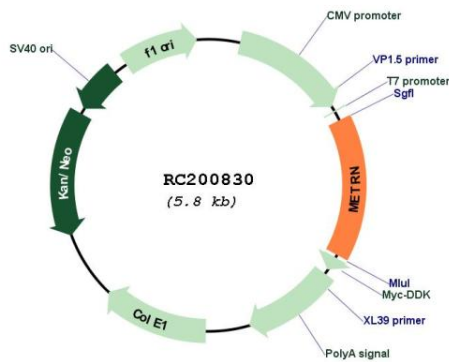
Cytogenetics: 16p13.3

Protein Families: Secreted Protein

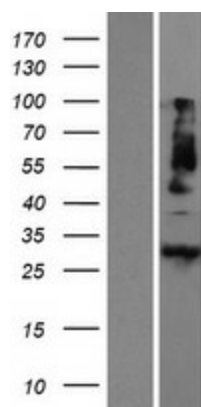
MW: 31 kDa

Gene Summary: Meteorin regulates glial cell differentiation and promotes the formation of axonal networks during neurogenesis (Nishino et al., 2004 [PubMed 15085178]).[supplied by OMIM, Mar 2008]

Product images:



Circular map for RC200830



Western blot validation of overexpression lysate (Cat# [LY411418]) using anti-DDK antibody (Cat# [TA50011-100]). Left: Cell lysates from untransfected HEK293T cells; Right: Cell lysates from HEK293T cells transfected with RC200830 using transfection reagent MegaTran 2.0 (Cat# [TT210002]).