

## Product datasheet for **RC200829**

### GRWD1 (NM\_031485) Human Tagged ORF Clone

#### Product data:

Product Type:	Expression Plasmids
Product Name:	GRWD1 (NM_031485) Human Tagged ORF Clone
Tag:	Myc-DDK
Symbol:	GRWD1
Synonyms:	CDW4; GRWD; RRB1; WDR28
Mammalian Cell Selection:	Neomycin
Vector:	pCMV6-Entry (PS100001)
E. coli Selection:	Kanamycin (25 ug/mL)



[View online »](#)

**ORF Nucleotide Sequence:**

>RC200829 ORF sequence  
 Red=Cloning site Blue=ORF Green=Tags(s)

TTTTGTAATACGACTCACTATAGGGCGGCCGGAATTCGTCGACTGGATCCGGTACCGAGGAGATCTGCC  
 GCC**CGGATCGCC**

ATGGCGGCGCGCAAGGGTCGGCGTCGCACGTGTGAAACCGGGAAACCCATGGAAGCCGAGTCCGGCGACA  
 CAAGTTCGAGGGCCCGGCCAGGTCTACTGCCCGCCGGGGCCGCCCTACGCGAAGGGGAGGAGCT  
 GGTTCATGGACGAGGAGGCTATGTGCTCTACCACCGAGCGCAGACTGGCGCCCTGTCTCAGCTTTGAC  
 ATAGTCCGGGATCACCTGGGAGACAACCGACAGACTTCTCTTACACTTTACTTGTGTGCTGGGACCC  
 AGGCTGAGAGCGCCAGAGCAACAGACTGATGATGCTTCGGATGCACAATCTGCATGGGACAAAGCCCC  
 ACCCTCAGAGGGCAGTGAAGAAGAAGAGGAGGAAGATGAAGAGGATGAAGAAGCGGAAACCTCAG  
 CTGGAGCTGGCCATGGTCCCCACTATGGTGGCATCAACCGAGTTCGGGTGTCATGGCTGGGTGAAGAGC  
 CTGTGGCTGGGGTGTGGTCAGAGAAGGGCCAGGTGGAGGTGTTTTCGCTGCGCGGCTTCTGCAGGTGGT  
 GGAGGAGCCCCAGGCCCTGGCAGCCTTCTCCGGGATGAGCAGGCCAAATGAAGCCCATCTTCTCCTTC  
 GCTGGACACATGGGCGAGGGCTTTGCCCTTGACTGGTCCCCCGGGTACCGGTGCGCTGCTGACCGGTG  
 ACTGTCAAAGAACATCCACCTCTGGACACCTACGGACGCGGGCTCTGGCACGTGGACCAGCGGCCATT  
 CGTGGGCCACACACGCTCTGTGGAGACCTGCAGTGGTACCAGCTGAGAACACGGTGTTCCTCCTGC  
 TCAGCTGACGCCTCCATCCGCATCTGGGACATCCGGGACGCCCCAGCAAGGCCTGCATGCTCACCACAG  
 CCACCGCCATGATGGGACGTCATGTGTCATCAGCTGGAGCCCGGGAGCCCTTCTGCTCAGTGGCGG  
 GGATGATGGGGCCCTCAAGATCTGGGACCTTCGGCAGTCAAGTCTGGTTCAGTGGCCACCTTCAAG  
 CAGCACGTGGCCCCGTGACCTCCGTGAGTGGACCCCCAGGACAGCGGGTCTTTGCAGCCTCGGGT  
 CAGACCACAGATCACACAGTGGGACCTGGCAGTGGAGCGGGACCCTGAGCGGGCGCAGTGGAGCCGA  
 CCCCAGGACTGGCCGACCTCCCGCAGCAGCTGCTGTTCTGTCACCGGGGAGACCGAGCTGAAGGAGCTG  
 CACTGGCACCCGAGTGCCAGGCTCCTGGTACGACGCGCTGTCAGGCTTACCATCTTCCGACCA  
 TCAGCGTC

**ACGCGT**ACGCGGCCGCTCGAGCAGAACTCATCTCAGAAGAGGATCTGGCAGCAATGATATCCTGGATT  
 ACAAGGATGACGACGATAAGGTTTAA

**Protein Sequence:**

>RC200829 protein sequence  
 Red=Cloning site Green=Tags(s)

MAARKRRRTCETGEPMEAESGDTSSSEGPAQVYLPGRGPPLREGEELVMDEEAYVLYHRAQTGAPCLSFD  
 IVRDHLGDNRELPLTLYL CAGTQAESAQSNRLMMLRMHNLHGTKPPPSEGSDEEEEEDEEERKPKQ  
 LELAMVPHYGGINRVRVSWLGEPPVAGVWSEKQVEVFLRRLQVVEEPQALAAFLRDEQAQMKPIFSF  
 AGHMGEGFALDWSPRVTGRLLTGDCQKNIHLWPTDGGSWHVDQRPFFVGHTRSVEDLQWSPTENTVFASC  
 SADASIRIWDIRAAPSKACMLTTATAHDGDNVISWSRREPFLLSGGDDGALKIWLDRQFKSGSPVATFK  
 QHVAPVTSVEWHPQDSGVFAASGADHQITQWDLAVERDPEAGDVEADPGLADLPQQLLFVHQGETELKEL  
 HWHPQCPGLLVSTALSGFTIFRTISV

**TR**TRPLEQKLISEEDLAANDILDYKDDDDKV

**Chromatograms:**

[https://cdn.origene.com/chromatograms/mk6399\\_g07.zip](https://cdn.origene.com/chromatograms/mk6399_g07.zip)

**Restriction Sites:**

Sgfl-MluI

**Cloning Scheme:**

Cloning sites used for ORF Shutting:



\* The last codon before the Stop codon of the ORF

**ACCN:** NM\_031485

**ORF Size:** 1338 bp

**OTI Disclaimer:** The molecular sequence of this clone aligns with the gene accession number as a point of reference only. However, individual transcript sequences of the same gene can differ through naturally occurring variations (e.g. polymorphisms), each with its own valid existence. This clone is substantially in agreement with the reference, but a complete review of all prevailing variants is recommended prior to use. [More info](#)

**OTI Annotation:** This clone was engineered to express the complete ORF with an expression tag. Expression varies depending on the nature of the gene.

**Components:** The ORF clone is ion-exchange column purified and shipped in a 2D barcoded Matrix tube containing 10ug of transfection-ready, dried plasmid DNA (reconstitute with 100 ul of water).

**Reconstitution Method:**

1. Centrifuge at 5,000xg for 5min.
2. Carefully open the tube and add 100ul of sterile water to dissolve the DNA.
3. Close the tube and incubate for 10 minutes at room temperature.
4. Briefly vortex the tube and then do a quick spin (less than 5000xg) to concentrate the liquid at the bottom.
5. Store the suspended plasmid at -20°C. The DNA is stable for at least one year from date of shipping when stored at -20°C.

**RefSeq:** [NM\\_031485.1](#)
**RefSeq Size:** 2456 bp

**RefSeq ORF:** 1341 bp

**Locus ID:** 83743

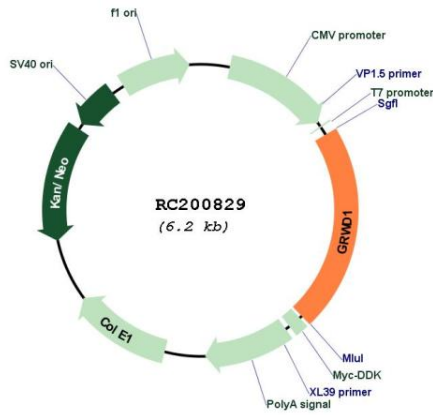
**UniProt ID:** [Q9BQ67](#)
**Cytogenetics:** 19q13.33

**Domains:** WD40

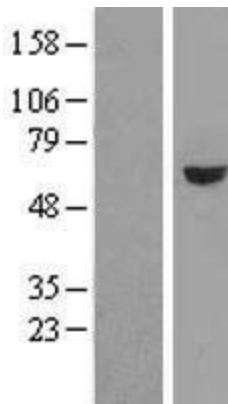
**MW:** 49.4 kDa

**Gene Summary:** This gene encodes a glutamate-rich protein that contains five WD-repeat motifs. The encoded protein may play a critical role in ribosome biogenesis and may also play a role in histone methylation through interactions with CUL4-DDB1 ubiquitin E3 ligase. [provided by RefSeq, Feb 2012]

**Product images:**



Circular map for RC200829



Western blot validation of overexpression lysate (Cat# [LY410483]) using anti-DDK antibody (Cat# [TA50011-100]). Left: Cell lysates from untransfected HEK293T cells; Right: Cell lysates from HEK293T cells transfected with RC200829 using transfection reagent MegaTran 2.0 (Cat# [TT210002]).