

Product datasheet for **RC200828**

KATNAL1 (NM_032116) Human Tagged ORF Clone

Product data:

Product Type:	Expression Plasmids
Product Name:	KATNAL1 (NM_032116) Human Tagged ORF Clone
Tag:	Myc-DDK
Symbol:	KATNAL1
Mammalian Cell Selection:	Neomycin
Vector:	pCMV6-Entry (PS100001)
E. coli Selection:	Kanamycin (25 ug/mL)



[View online »](#)

ORF Nucleotide Sequence:

>RC200828 ORF sequence
 Red=Cloning site Blue=ORF Green=Tags(s)

TTTTGTAATACGACTCACTATAGGGCGGCCGGAATTCGTCGACTGGATCCGGTACCGAGGAGATCTGCC
 GCC**CGCATCGCC**

ATGAATTTGGCTGAGATTTGTGATAATGCAAGAAAGGAAGAGAATATGCCCTTCTTGGAAATTACGACT
 CATCAATGGTATATTACCAGGGGTGATGCAGCAGATTACAGACATTGCCAGTCAGTCAGAGATCCAGC
 TATCAAAGGCAAATGGCAACAGGTTTCGGCAGGAATTATTGGAGGAATATGAACAAGTTAAAAAGTATTGTC
 AGCACTTTAGAAAAGTTTTAAAATTGACAAGCCTCCAGATTTCCCTGTGTCTGTCAAGATGAACCATTTA
 GAGATCCTGTGTTTGGCCACCCCTGTTCTGCAGAACACAGAGCTCCACCTCAGATCAGGCGTCCCAA
 TCGAGAAGTAAGACCTCTGAGGAAAGAAATGGCAGGAGTAGGAGCCCGGGACCTGTAGGCCGAGCACAT
 CCTATATCAAAGAGTGAAAAGCCTTCTACAAGTAGGGACAAGGACTATAGAGCAAGAGGGAGAGATGACA
 AGGGAAGGAAGAATATGCAAGATGGTCAAGTGTGGTAAATGCCAAAATTTGATGGTGTGGTTATGA
 TAAGGATCTGGTGAAGCCCTTGAAGAGACATTTGATCCAGGAATCCTAGCATTATTGGGATGACATA
 GCAGATCTGGAAGAAGCTAAGAAGTTGCTAAGGGAAGCTGTTGTTCTTCCAATGTGGATGCCTGACTTTT
 TCAAAGGGATTAGAAGGCCATGGAAGGGTGTACTGATGGTTGGACCCCGAGCACTGGTAAAACATGCT
 AGCTAAAGCTGTTGCCACTGAATGTGGTACAACATTTCTCAACGTTTCGCTTCTACACTGACATCTAAA
 TACAGAGGTGAATCTGAGAAGTTAGTTCGTCGTGTTGTTGAGATGGCTAGATTTTATGCCCTACCACGA
 TCTTCATTGATGAGATAGATTCTATCTGCAGTCGAAGAGGAACCTCTGATGAACATGAGGCAAGTCGCAG
 GGTCAGTCTGAAGTCTCATTAGATGGATGGAGTTGGAGGAGCTTTAGAAAATGATGATCCTTCCAAA
 ATGGTTATGGTATTGGCTGCTACTAATTTCCCGTGGGACATTGATGAAGCTTTGCGAAGAAGGTTAGAAA
 AAAGGATATATACCTCTCCCAACAGCAAAGGAAGAGCTGAGCTTCTGAAGATCAACCTTCGTGAGGT
 CGAATTAGATCCTGATATTCAACTGGAAGATATAGCCGAGAAGATTGAGGGCTATTCTGGTGTGACATC
 ACTAATGTTTGCAGGGATGCCTCTTAAATGGCAATGAGACGGCGTATCAATGGCTTAAGTCCAGAAGAAA
 TCCGTGCACTTTCTAAAGAGGAACCTCAGATGCCTGTTACCAAAGGAGACTTTGAATTGGCCCTAAAGAA
 AATTGCTAAGTCTGTCTCTGCTGCAGACTTGGAGAAGTATGAAAATGGATGGTTGAATTTGGATCTGCT

ACGCGTACGCGGCCGCTCGAGCAGAAACTCATCTCAGAAGAGGATCTGGCAGCAAATGATATCCTGGATT
 ACAAGGATGACGACGATAAGGTTTAA

Protein Sequence:

>RC200828 protein sequence
 Red=Cloning site Green=Tags(s)

MNLAEICDNAKKGREYALLGNYDSSMVYQGVMMQIQRHCSVRDPAIKGKWQVRQELLEEEYEQVKSIV
 STLESFKIDKPPDFPVSCQDEPFRDPAVWPPVPAEHRAPPQIRRPNREVRPLRKEMAGVGARGPVGRAH
 PISKSEKSTSRDKDYRARGRDDKGRKNMQDGASDGEMPKFDGAGYDKDLVEALERDIVSRNPSIHWDDI
 ADLEEAKLLREAVVLPWMPDFFKGIRRPWGVLMVGPPGTGKTM LAKAVATECGTTFFNVSSSTLTSK
 YRGESEKLVRLLFEMARFYAPTTIFIDEIDSICSRRGTSDEHEASRRVKSELLIQMDGVGGALENDPDK
 MVMVLAATNFPWDIDEALRRRLEKRIYIPLPTAKGRAEL LKINLREVELDPDIQLEDIAEKIEGYSGADI
 TNVCRDASLMAMRRRINGLSPEIRALSKEELQMPVTKGFELALKKIAKSVSAADLEKYEKWMVEFGSA

TRTRPLEQKLISEEDLAANDILDYKDDDDKV

Chromatograms:

https://cdn.origene.com/chromatograms/mk6198_e12.zip

Restriction Sites:

Sgfl-Mlul

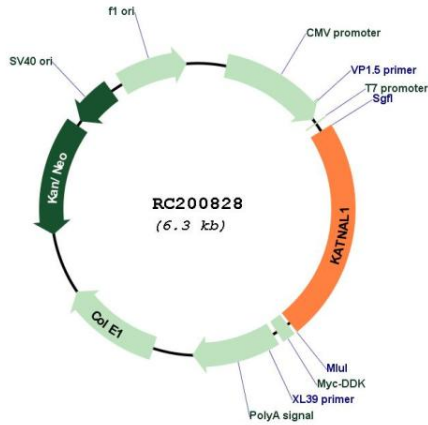
Cytogenetics: 13q12.3

Domains: AAA, AAA

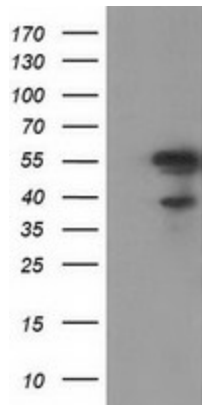
MW: 55.4 kDa

Gene Summary: Regulates microtubule dynamics in Sertoli cells, a process that is essential for spermiogenesis and male fertility. Severs microtubules in an ATP-dependent manner, promoting rapid reorganization of cellular microtubule arrays (By similarity). Has microtubule-severing activity in vitro (PubMed:26929214).[UniProtKB/Swiss-Prot Function]

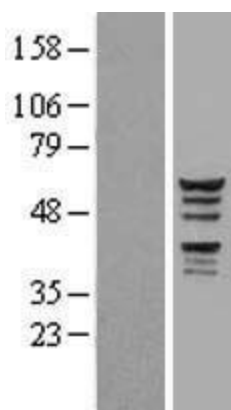
Product images:



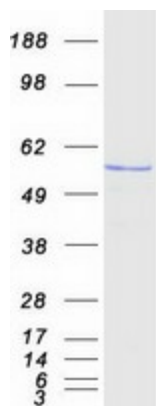
Circular map for RC200828



HEK293T cells were transfected with the pCMV6-ENTRY control (Cat# [PS100001], Left lane) or pCMV6-ENTRY KATNAL1 (Cat# RC200828, Right lane) cDNA for 48 hrs and lysed. Equivalent amounts of cell lysates (5 ug per lane) were separated by SDS-PAGE and immunoblotted with anti-KATNAL1(Cat# [TA502547]). Positive lysates [LY403145] (100ug) and [LC403145] (20ug) can be purchased separately from OriGene.



Western blot validation of overexpression lysate (Cat# [LY403145]) using anti-DDK antibody (Cat# [TA50011-100]). Left: Cell lysates from untransfected HEK293T cells; Right: Cell lysates from HEK293T cells transfected with RC200828 using transfection reagent MegaTran 2.0 (Cat# [TT210002]).



Coomassie blue staining of purified KATNAL1 protein (Cat# [TP300828]). The protein was produced from HEK293T cells transfected with KATNAL1 cDNA clone (Cat# RC200828) using MegaTran 2.0 (Cat# [TT210002]).