

Product datasheet for RC200827

ALS2CR1 (NIF3L1) (NM_021824) Human Tagged ORF Clone

Product data:

Product Type:	Expression Plasmids
Product Name:	ALS2CR1 (NIF3L1) (NM_021824) Human Tagged ORF Clone
Tag:	Myc-DDK
Symbol:	ALS2CR1
Synonyms:	ALS2CR1; CALS-7; MDS015
Mammalian Cell Selection:	Neomycin
Vector:	pCMV6-Entry (PS100001)
E. coli Selection:	Kanamycin (25 ug/mL)
ORF Nucleotide Sequence:	>RC200827 ORF sequence Red=Cloning site Blue=ORF Green=Tags(s)

TTTTGTAATACGACTCACTATAGGGCGCCGGGAATTCGTCGACTGGATCCGGTACCGAGGAGATCTGCC
GCC**CGATCGCC**

ATGTTGTCATCTTGCCTACGCCAGTCCCCACGACAGTCCGGTTGTAGATTCCCTGATCTGCAATTCTT
CCCCTTCCTTCATGGATTTGAAGGCTCTCCTTTCTTCTTGAATGACTTTGCATCCCTCTCGTTTGTGA
GAGTTGGGACAATGTTGGATTACTGGTGAACCAAGCCACCACATACTGTAATACTCTTCTGACC
AATGACCTGACTGAGGAAGTGATGGAGGAGGTGCTGCAAAAGAAGGCAGACCTCATTCTCTCTACCATC
CGCCTATCTTCCGACCCATGAAGCGCATAACCTGGAACACATGGAAGGAGCGCCTGGTGATCCGGGCTCT
GGAGAACAGAGTCGGTATCTACTCTCCTACATACAGCCTATGATGCTGCGCCCAGGGCGTCAACAACTGG
TTGGCTAAAGGGCTTGGAGCTTGTACCTCCAGGCCATACATCCTTCAAAGCTCCCAACTACCCTACAG
AGGGAAACCACCGAGTAGAATCAACGTTAACTACACCAAGACCTGGACAAAGTCATGTCTGCAGTGAA
AGGAATTGACGGTGTCTGTCACCTTTCTTCTGCTAGGACTGGTAATGAGGAACAAACACGGATTAAT
CTGAATTGACTCAGAAGCTTTGATGCAGGTGGTAGATTTTCTTCCCGGAACAAACAACCTTTATCAGA
AGACGGAAATTCTGCTACTGGAGAAGCCTTTGCTTCTACATACTGGAATGGGACGGTTATGCACACTGGA
TGAATCTGTCTCCCTGGCAACCATGATTGATCGAATAAAAAGACACCTAAAACATCTCATATTCGCTTA
GCCCTTGGGGTGGGAGAACCTTAGAGTCTCAAGTCAAAGTCGTGGCCCTGTGTGCTGGTCTGGGAGCA
GGTTCTGCAGGGTGTGAGGCTGACCTTTACCTCACAGGTGAGATGTCCCATCATGATACTTTGGATGC
TGCTTCCAAGGAATAAATGTCATCCTCTGTGAACACAGCAACACTGAACGAGGCTTTCTTCTGACCTT
CGAGATATGCTGGATTCTCACTTGGAGAATAAGATAAATATTATCCTATCAGAGACTGACAGGGACCCTC
TTCAGGTGGTA

ACGCGTACGCGGCCGCTCGAGCAGAAACTCATCTCAGAAGAGGATCTGGCAGCAATGATATCCTGGATT
ACAAGGATGACGACGATAAGGTTTAA



[View online »](#)

Protein Sequence: >RC200827 protein sequence
Red=Cloning site Green=Tags(s)

MLSSCVRPVPTTVRFVDSLICNSSRSFMDLKALLSSLNDFASLSFAESWDNVGLLVEPSPHTVNTLFLT
 NDLTEEVMEVLQKKADLILSYHPIIFRPMKRITWNTWKERLVIRALENRVGIYSPHTAYDAAPQGVNWW
 LAKGLGACTSRPIHPSKAPNYPTTEGNHRVEFNVNYTQDLKVMASVKGIDGVSVTFSFARTGNEEQTRIN
 LNCTQKALMQVDFLSRNKQLYQKTEILSLEKPLLLHTGMGRCLTLDSEVSLATMIDRIKRHLKLSHIRL
 ALGVGRITLESQVKVVALCAGSGSSVLQGVADLYLTGEMSHHDTLDAASQGINVILCEHSNTERGFLSDL
 RDMLDSHLENKINIILSETDRDPLQVV

TRTRPLEQKLISEEDLAANDILDYKDDDDKV

Chromatograms: https://cdn.origene.com/chromatograms/mk6408_b11.zip

Restriction Sites: SgfI-MluI

Cloning Scheme:



ACCN: NM_021824

ORF Size: 1131 bp

OTI Disclaimer: The molecular sequence of this clone aligns with the gene accession number as a point of reference only. However, individual transcript sequences of the same gene can differ through naturally occurring variations (e.g. polymorphisms), each with its own valid existence. This clone is substantially in agreement with the reference, but a complete review of all prevailing variants is recommended prior to use. [More info](#)

OTI Annotation: This clone was engineered to express the complete ORF with an expression tag. Expression varies depending on the nature of the gene.

Components: The ORF clone is ion-exchange column purified and shipped in a 2D barcoded Matrix tube containing 10ug of transfection-ready, dried plasmid DNA (reconstitute with 100 ul of water).

Reconstitution Method:

1. Centrifuge at 5,000xg for 5min.
2. Carefully open the tube and add 100ul of sterile water to dissolve the DNA.
3. Close the tube and incubate for 10 minutes at room temperature.
4. Briefly vortex the tube and then do a quick spin (less than 5000xg) to concentrate the liquid at the bottom.
5. Store the suspended plasmid at -20°C. The DNA is stable for at least one year from date of shipping when stored at -20°C.

Note: Plasmids are not sterile. For experiments where strict sterility is required, filtration with 0.22um filter is required.

RefSeq Size: 1649 bp

RefSeq ORF: 1053 bp

Locus ID: 60491

UniProt ID: [Q9GZT8](#)

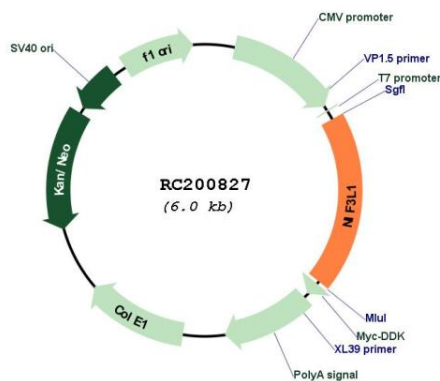
Cytogenetics: 2q33.1

Domains: NIF3, DUF34

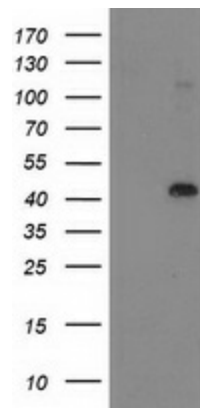
MW: 42 kDa

Gene Summary: May function as a transcriptional corepressor through its interaction with COPS2, negatively regulating the expression of genes involved in neuronal differentiation.[UniProtKB/Swiss-Prot Function]

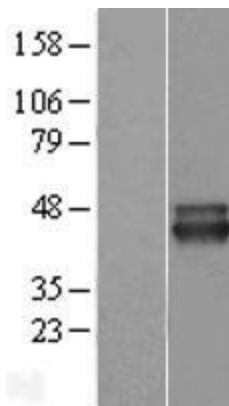
Product images:



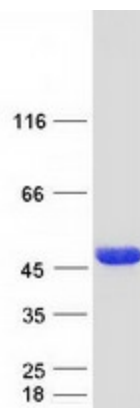
Circular map for RC200827



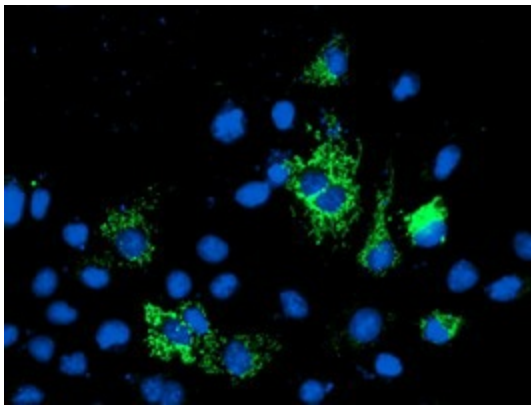
HEK293T cells were transfected with the pCMV6-ENTRY control (Cat# [PS100001], Left lane) or pCMV6-ENTRY NIF3L1 (Cat# RC200827, Right lane) cDNA for 48 hrs and lysed. Equivalent amounts of cell lysates (5 ug per lane) were separated by SDS-PAGE and immunoblotted with anti-NIF3L1 (Cat# [TA503712]). Positive lysates [LY411906] (100ug) and [LC411906] (20ug) can be purchased separately from OriGene.



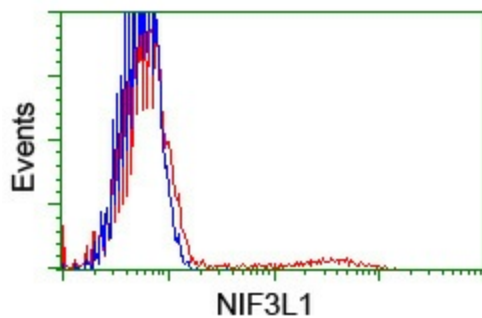
Western blot validation of overexpression lysate (Cat# [LY428055]) using anti-DDK antibody (Cat# [TA50011-100]). Left: Cell lysates from untransfected HEK293T cells; Right: Cell lysates from HEK293T cells transfected with [RC227825] using transfection reagent MegaTran 2.0 (Cat# [TT210002]).



Coomassie blue staining of purified NIF3L1 protein (Cat# [TP300827]). The protein was produced from HEK293T cells transfected with NIF3L1 cDNA clone (Cat# RC200827) using MegaTran 2.0 (Cat# [TT210002]).



Anti-NIF3L1 mouse monoclonal antibody (TA503712) immunofluorescent staining of COS7 cells transiently transfected by pCMV6-ENTRY NIF3L1 (RC200827).



HEK293T cells transfected with either RC200827 overexpress plasmid (Red) or empty vector control plasmid (Blue) were immunostained by anti-NIF3L1 antibody (TA503712), and then analyzed by flow cytometry.