

Product datasheet for **RC200825**

DDRGK1 (NM_023935) Human Tagged ORF Clone

Product data:

Product Type:	Expression Plasmids
Product Name:	DDRGK1 (NM_023935) Human Tagged ORF Clone
Tag:	Myc-DDK
Symbol:	DDRGK1
Synonyms:	C20orf116; dj1187M17.3; SEMDSH; UFBP1
Mammalian Cell Selection:	Neomycin
Vector:	pCMV6-Entry (PS100001)
E. coli Selection:	Kanamycin (25 ug/mL)
ORF Nucleotide Sequence:	>RC200825 ORF sequence Red=Cloning site Blue=ORF Green=Tags(s)

TTTGTGAATACGACTCACTATAGGGCGGCCGGAATTCGTCGACTGGATCCGGTACCGAGGAGATCTGCC
GCC**CGATCGC**

ATGGTGGCGCCTGTGTGGTACTTGGTAGCGGCGGCTCTGCTAGTCGGCTTTATCCTCTTCTGACTCGCA
GCCGGGGCCGGGCGGCATCAGCCGGCCAAGAGCCACTGCACAATGAGGAGCTGGCAGGAGCAGGCCGGGT
GGCCAGCCTGGGCCCTGGAGCCTGAGGAGCCGAGAGCTGGAGGCAGGCCTCGGCGCCGAGGGACCTG
GGCAGCCGCTACAGGCCAGCGTCGAGCCAGCGGGTGGCTGGGCAGAAGCAGATGAGAACGAGGAGG
AAGCTGTCATCCTAGCCAGGAGGAGGAAGGTGTCGAGAAGCCAGCGGAACTCACCTGTCGGGGAAAAT
TGGAGCTAAGAACTGCGGAAGCTGGAGGAGAAACAAGCGCGAAAGGCCAGCGTGAGGCAGAGGAGGCT
GAACGTGAGGAGCGGAAACGACTCGAGTCCCAGCGCAAGCTGAGTGGAAGAAGGAGGAGGAGCGGCTTC
GCCTGGAGGAGGAGCAGAAGGAGGAGGAGGAGGAAGGCCCGCAGGAGCAGGCCAGCGGGAGCATGA
GGAGTACCTGAACTGAAGGAGGCCTTTGTGGTGGAGGAGGAAGGCGTAGGAGAGACCATGACTGAGGAA
CAGTCCCAGAGCTTCTGACAGAGTTCATCACTACATCAAGCAGTCCAAGGTTGTGCTCTTGAAGACC
TGGCTTCCAGGTGGGCCTACGCACTCAGGACACCATAAATCGCATCCAGGACCTGCTGGCTGAGGGGAC
TATAACAGGTGTGATTGACGACCGGGCAAGTTCATCTACATAACCCAGAGGAACTGGCCGCCGTGGCC
AACTTCATCCGACAGCGGGCGGGTGTCCATCGCCGAGCTTGCCCAAGCCAGCAACTCCCTCATCGCCT
GGGGCCGGGAGTCCCCTGCCCAAGCCCCAGCC

ACGCGTACGCGGCCGCTCGAGCAGAACTCATCTCAGAAGAGGATCTGGCAGCAATGATATCCTGGATT
ACAAGGATGACGACGATAAGGTTTAA



[View online »](#)

Protein Sequence: >RC200825 protein sequence
 Red=Cloning site Green=Tags(s)

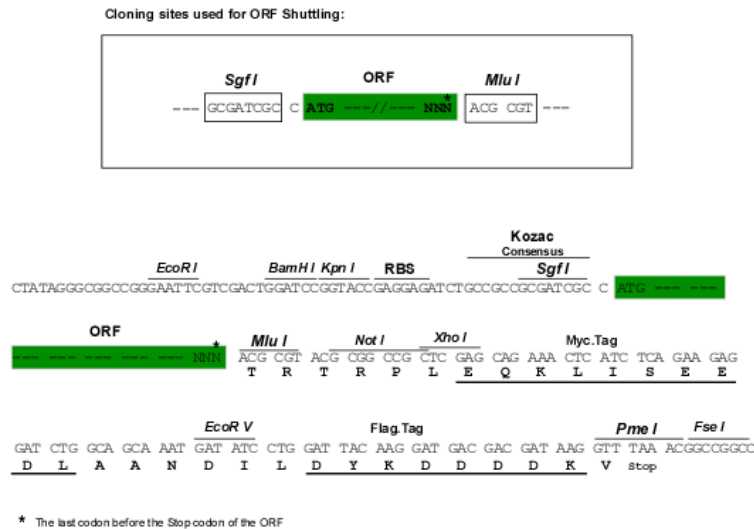
MVAPVWYLVAALLVGFILFLTRSRGRAASAGQEPLHNEELAGAGRVAQPGPLEPEEPAGGRPRRRDL
 GSRLQAQRRAQRVAWAEADENEEAVILAQEEEGVEKPAETHLSGKIGAKKLRLKLEEKQARKAQREAEAA
 EREERKRLESQREAEWKKEERLRLKEEQKEEEERKAREEQAREHEEYLLKKEAFVVEEEGVGETMTEE
 QSQSFLTEFINYIKQSKVVLLEDLASQVGLRTQDTINRIQDLLAEGTITGVIDDRGKFIYITPEELAAVA
 NFIRQGRVSIELAQAASNSLIWGRESPAQAPA

TRTRPLEQKLISEEDLAANDILDYKDDDDKV

Chromatograms: https://cdn.origene.com/chromatograms/mk6399_e11.zip

Restriction Sites: SgfI-MluI

Cloning Scheme:



ACCN: NM_023935

ORF Size: 942 bp

OTI Disclaimer: The molecular sequence of this clone aligns with the gene accession number as a point of reference only. However, individual transcript sequences of the same gene can differ through naturally occurring variations (e.g. polymorphisms), each with its own valid existence. This clone is substantially in agreement with the reference, but a complete review of all prevailing variants is recommended prior to use. [More info](#)

OTI Annotation: This clone was engineered to express the complete ORF with an expression tag. Expression varies depending on the nature of the gene.

Components: The ORF clone is ion-exchange column purified and shipped in a 2D barcoded Matrix tube containing 10ug of transfection-ready, dried plasmid DNA (reconstitute with 100 ul of water).

Reconstitution Method:

1. Centrifuge at 5,000xg for 5min.
2. Carefully open the tube and add 100ul of sterile water to dissolve the DNA.
3. Close the tube and incubate for 10 minutes at room temperature.
4. Briefly vortex the tube and then do a quick spin (less than 5000xg) to concentrate the liquid at the bottom.
5. Store the suspended plasmid at -20°C. The DNA is stable for at least one year from date of shipping when stored at -20°C.

Note: Plasmids are not sterile. For experiments where strict sterility is required, filtration with 0.22um filter is required.

RefSeq: [NM_023935.3](#)

RefSeq Size: 1298 bp

RefSeq ORF: 945 bp

Locus ID: 65992

UniProt ID: [Q96HY6](#)

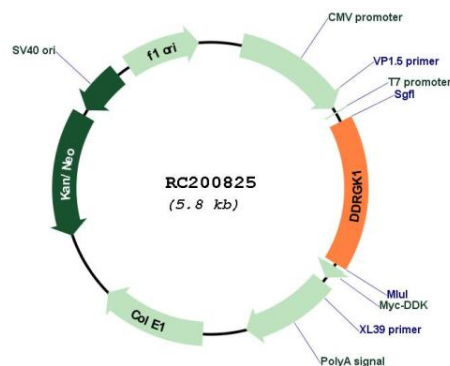
Cytogenetics: 20p13

Protein Families: Secreted Protein, Transmembrane

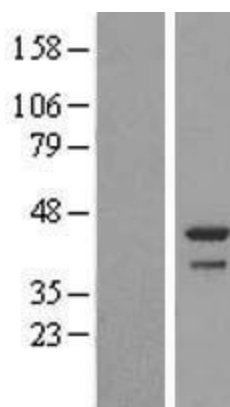
MW: 35.6 kDa

Gene Summary: The protein encoded by this gene interacts with components of the ubiquitin fold modifier 1 conjugation pathway and helps prevent apoptosis in ER-stressed secretory tissues. In addition, the encoded protein regulates nuclear factor- κ B activity. [provided by RefSeq, Dec 2015]

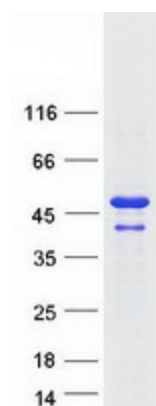
Product images:



Circular map for RC200825



Western blot validation of overexpression lysate (Cat# [LY411440]) using anti-DDK antibody (Cat# [TA50011-100]). Left: Cell lysates from untransfected HEK293T cells; Right: Cell lysates from HEK293T cells transfected with RC200825 using transfection reagent MegaTran 2.0 (Cat# [TT210002]).



Coomassie blue staining of purified DDRGK1 protein (Cat# [TP300825]). The protein was produced from HEK293T cells transfected with DDRGK1 cDNA clone (Cat# RC200825) using MegaTran 2.0 (Cat# [TT210002]).