

Product datasheet for RC200822

PECR (NM_018441) Human Tagged ORF Clone

Product data:

Product Type:	Expression Plasmids
Product Name:	PECR (NM_018441) Human Tagged ORF Clone
Tag:	Myc-DDK
Symbol:	PECR
Synonyms:	DCRRP; HPDHASE; HSA250303; PVIARL; SDR29C1; TERP
Mammalian Cell Selection:	Neomycin
Vector:	pCMV6-Entry (PS100001)
E. coli Selection:	Kanamycin (25 ug/mL)
ORF Nucleotide Sequence:	>RC200822 ORF sequence Red=Cloning site Blue=ORF Green=Tags(s)

TTTTGTAATACGACTCACTATAGGGCGGCCGGAATTCGTCGACTGGATCCGGTACCGAGGAGATCTGCC
GCC**CGATCGCC**

ATGGCCTCTGGGCTAAGGGCAGGAGCTACCTGGCGCCTGGTTTGTGTCAGGGCCAAGTGGCCATCGTCA
CCGGCGGGGCCACGGGCATCGGAAAAGCCATCGTGAAGGAGCTCCTGGAGCTGGGAGTAATGTGGTCAT
TGCATCCCGTAAGTTGGAGAGATTGAAGTCTGCGGCAGATGAACTGCAGGCCAACCTACCTCCACAAAAG
CAGGCACGAGTCATTCCCATACAATGCAACATCCGGAATGAGGAGGAGTGAATAATTTGGTCAAATCTA
CCTTAGATACTTTTGGTAAGATCAATTTCTTGGTGAACAATGGAGGAGGCCAGTTTCTTTCCCTGCTGA
ACACATCAGTTCTAAGGGATGGCAGCTGTGCTTGAACCAACCTGACGGGTACCTTCTACATGTGCAAA
GCAGTTTACAGCTCCTGGATGAAAGAGCATGGAGGATCTATCGTCAATATCATTGTCCCTACTAAAGCTG
GATTTCCATTAGCTGTGCATTCTGGAGCTGCAAGAGCAGGTGTTTACAACCTCACCAAATCTTTAGCTTT
GGAATGGGCTGCAGTGGAAACGGATCAATTGTGTTGCCCTGGAGTTATTTATCCCAGACTGCTGTG
GAGAACTATGGTTCCTGGGGACAAAGCTTCTTTGAAGGTCTTTTCAGAAAATCCCCTAAACGAATTG
GTGTTCTGAGGAGTCTCCTCTGTGGTCTGCTTCTACTGTCTCCTGCAGCTTCTTTCATCACTGGACA
GTCAGTGGATGTGGATGGGGCCGGAGTCTATACTCACTCGTATGAGGTACCAGATCATGACAACCTGG
CCAAGGGAGCAGGGACCTTTCTGTTGTCAAAAAGATGAAGGAGACCTTAAGGAGAAAGCTAAGCTC

ACGCGTACGCGGCCGCTCGAGCAGAAACTCATCTCAGAAGAGGATCTGGCAGCAAATGATATCCTGGATT
ACAAGGATGACGACGATAAGGTTTAA



[View online »](#)

Protein Sequence: >RC200822 protein sequence
Red=Cloning site Green=Tags(s)

MASWAKGRSYLAPGLLQGQVAIVTGGATGIGKAIVKELLELSNVVIASRKLRLKSAADELQANLPPTK
 QARVIPIQCNIRNEEEVNNLVKSTLDTFGKINFLVNNGGQFLSPAEHISKGWHAVLETNLTGTFYMCK
 AVYSSWMKEHGGSIVNIIVPTKAGFPLAVHSGAARAGVYNLTKSLALEWACSGIRINCVAPGVIYSQTAV
 ENYGSWGQSF FEQSFQKIPAKRIGVPEEVSSVCFLLSPAASFITGQSVDVDGGRSLYTHSYEVPDHDNW
 PKGAGDLSVVKKMKETFKKAKL

TRTRPLEQKLISEEDLAANDILDYKDDDDKV

Chromatograms: https://cdn.origene.com/chromatograms/mk6386_d07.zip

Restriction Sites: SgfI-MluI

Cloning Scheme:



ACCN: NM_018441

ORF Size: 909 bp

OTI Disclaimer: The molecular sequence of this clone aligns with the gene accession number as a point of reference only. However, individual transcript sequences of the same gene can differ through naturally occurring variations (e.g. polymorphisms), each with its own valid existence. This clone is substantially in agreement with the reference, but a complete review of all prevailing variants is recommended prior to use. [More info](#)

OTI Annotation: This clone was engineered to express the complete ORF with an expression tag. Expression varies depending on the nature of the gene.

Components: The ORF clone is ion-exchange column purified and shipped in a 2D barcoded Matrix tube containing 10ug of transfection-ready, dried plasmid DNA (reconstitute with 100 ul of water).

Reconstitution Method:

1. Centrifuge at 5,000xg for 5min.
2. Carefully open the tube and add 100ul of sterile water to dissolve the DNA.
3. Close the tube and incubate for 10 minutes at room temperature.
4. Briefly vortex the tube and then do a quick spin (less than 5000xg) to concentrate the liquid at the bottom.
5. Store the suspended plasmid at -20°C. The DNA is stable for at least one year from date of shipping when stored at -20°C.

RefSeq: [NM_018441.2](#), [NP_060911.2](#)

RefSeq Size: 1874 bp

RefSeq ORF: 912 bp

Locus ID: 55825

UniProt ID: [Q9BY49](#)

Cytogenetics: 2q35

Domains: adh_short

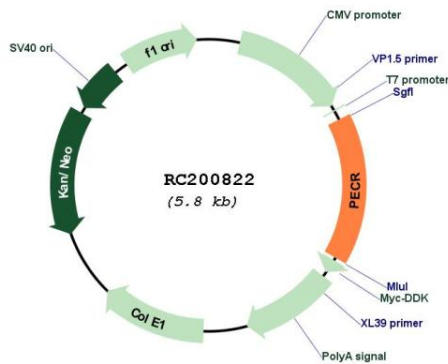
Protein Families: Druggable Genome

Protein Pathways: Biosynthesis of unsaturated fatty acids

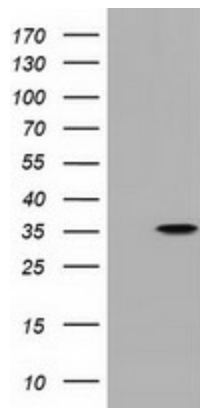
MW: 32.5 kDa

Gene Summary: Participates in chain elongation of fatty acids. Has no 2,4-dienoyl-CoA reductase activity. [UniProtKB/Swiss-Prot Function]

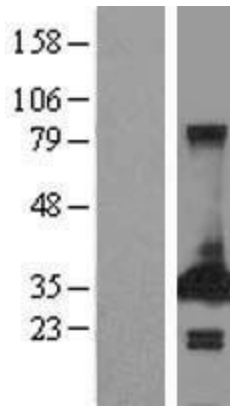
Product images:



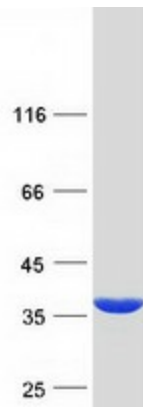
Circular map for RC200822



HEK293T cells were transfected with the pCMV6-ENTRY control (Cat# [PS100001], Left lane) or pCMV6-ENTRY PECR (Cat# RC200822, Right lane) cDNA for 48 hrs and lysed. Equivalent amounts of cell lysates (5 ug per lane) were separated by SDS-PAGE and immunoblotted with anti-PECR antibody (Cat# [TA501771]). Positive lysates [LY413023] (100ug) and [LC413023] (20ug) can be purchased separately from OriGene.



Western blot validation of overexpression lysate (Cat# [LY413023]) using anti-DDK antibody (Cat# [TA50011-100]). Left: Cell lysates from untransfected HEK293T cells; Right: Cell lysates from HEK293T cells transfected with RC200822 using transfection reagent MegaTran 2.0 (Cat# [TT210002]).



Coomassie blue staining of purified PECR protein (Cat# [TP300822]). The protein was produced from HEK293T cells transfected with PECR cDNA clone (Cat# RC200822) using MegaTran 2.0 (Cat# [TT210002]).