

Product datasheet for **RC200820**

CCDC86 (NM_024098) Human Tagged ORF Clone

Product data:

Product Type:	Expression Plasmids
Product Name:	CCDC86 (NM_024098) Human Tagged ORF Clone
Tag:	Myc-DDK
Symbol:	CCDC86
Mammalian Cell Selection:	Neomycin
Vector:	pCMV6-Entry (PS100001)
E. coli Selection:	Kanamycin (25 ug/mL)
ORF Nucleotide Sequence:	>RC200820 ORF sequence Red=Cloning site Blue=ORF Green=Tags(s)

TTTTGTAATACGACTCACTATAGGGCGGCCGGAATTCGTCGACTGGATCCGGTACCGAGGAGATCTGCC
GCC**CGATCGCC**

ATGGATACACCGTTAAGGCGCAGCCGACGGCTGGGAGGCCTAAGGCCGAATCCCCGAGAGCCTCACCT
CAGTTTCGCGGACGAGACGGGCCCTTGTGGAGTTCGAGTCGAACCCAGAAGAAACGAGGGAGCCGGGTC
TCCTCCGAGTGTGCAGCGGGCTGGCCTGGGGTCCCCGAAAGGCCCGGAAGACAAGCCAGGATCACCC
CGTCTGCAGCAGGTGCAGGCTTGGAGTACCCCAAGGGCAGCCAGAGCCAGGCGCAGCGTCCCCCAGC
GTCAGCAAGACCTACACCTGGAGTCGCCCAAAGACAGCCAGAGTACAGTCTGAATCCCCACGATGTCA
GCCGAAGCCAAGTGAGGAGGCACCAAAGTGTTCTCAGGACCAGGGAGTACTGGCCTCGGAGTTGGCCAG
AATAAGGAGGAGCTGACCCCGGGGCCCCCAGCATCAGTACCGCCGTCCCAGGATCACCAGAGCCTT
ACCCCGGTGAGCAAGCTCCCGTCCGGAGCCCTCTCAGCCACTACTGGAGCTGACACCCAGGGCACCTGG
CTCCCCCGGGTCAAGTATGAGCCGAGCAAGCCACCTCCAGTGGGAGACGGTACAGGCGGCTTCGGG
GCAAAGAAGCGAAAAGTTCTTCATCCCAGGCCCCAGCGTCCAAGAAGTTGAATAAAGAGGAGCTTCTG
TAATCCCGAAGGGGAAGCCAAATCGGGCGAGTGTGGAAGACCCTCCAAGAAAAGTTCTCCAGAT
GCTTCAGGACAAGCCCTGCGCACATCGTGGCAGCGGAAGATGAAGGAACGACAGGAGAGGAAGCTGGCC
AAGGACTTTGCCGTACCTGGAGGAGGAGAAGGAGAGGGCCCGCAGGAGAAGAACAGCGCCGGGCTG
AGAACCTGAAACGCCCTGGAGAATGAGCGGAAGGCAGAGGTCGTCAGTATCCGAAACCCCGCAA
GCTCAAGCGGGCAAAGAAGAAGCAGCTGCGCTCCATTGAGAAGCGGGACACCCTGGCCCTGCTGCAGAAG
CAGCCGCCCCAGCAGCCGGCAGCCAAGATC

ACGCGTACGCGGCCGCTCGAGCAGAACTCATCTCAGAAGAGGATCTGGCAGCAAATGATATCCTGGATT
ACAAGGATGACGACGATAAAGTTTAA



[View online »](#)

Protein Sequence: >RC200820 protein sequence
Red=Cloning site Green=Tags(s)

MDTPLRRSRRLLGGLRPESPELTSVSRTRRALVEFESNPEETREPGSPPSVQRAGLGSPERPPKTPSPGSP
 RLQQGAGLESPQGQPEPGAASPQRQDLHLESPQRQPEYSPESPRCQPKPSEEAPKCSQDQVLAELAQ
 NKEELTPGAPQHQLPPVPGSPEYPGQQAPGPEPSQPLLELTPRAPGSPRGQHEPSKPPPAGETVTGGFG
 AKKRKGSSSQAPASKKLNKEELPVIPKPKSGRVWDRSKKRF SQMLQDKPLRTSWQRKMKERQERKLA
 KDFARHLEEEKERRRQEKKQRRRAENLKRRENERKAQEVVQVIRNPAKLRKRAKKQLRSIEKRDTLALLQK
 QPPQQPAAKI

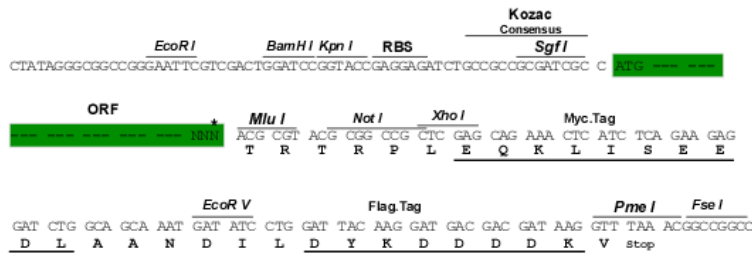
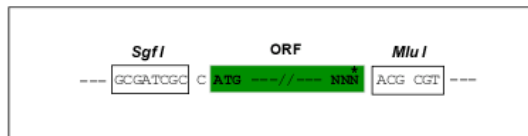
TRTRPLEQKLISEEDLAANDILDYKDDDDKV

Chromatograms: https://cdn.origene.com/chromatograms/mk6385_g01.zip

Restriction Sites: Sgfl-MluI

Cloning Scheme:

Cloning sites used for ORF Shuttling:



* The last codon before the Stop codon of the ORF

ACCN: NM_024098

ORF Size: 1080 bp

OTI Disclaimer: The molecular sequence of this clone aligns with the gene accession number as a point of reference only. However, individual transcript sequences of the same gene can differ through naturally occurring variations (e.g. polymorphisms), each with its own valid existence. This clone is substantially in agreement with the reference, but a complete review of all prevailing variants is recommended prior to use. [More info](#)

OTI Annotation: This clone was engineered to express the complete ORF with an expression tag. Expression varies depending on the nature of the gene.

Components: The ORF clone is ion-exchange column purified and shipped in a 2D barcoded Matrix tube containing 10ug of transfection-ready, dried plasmid DNA (reconstitute with 100 ul of water).

Reconstitution Method:

1. Centrifuge at 5,000xg for 5min.
2. Carefully open the tube and add 100ul of sterile water to dissolve the DNA.
3. Close the tube and incubate for 10 minutes at room temperature.
4. Briefly vortex the tube and then do a quick spin (less than 5000xg) to concentrate the liquid at the bottom.
5. Store the suspended plasmid at -20°C. The DNA is stable for at least one year from date of shipping when stored at -20°C.

RefSeq: [NM_024098.4](#)

RefSeq Size: 2022 bp

RefSeq ORF: 1083 bp

Locus ID: 79080

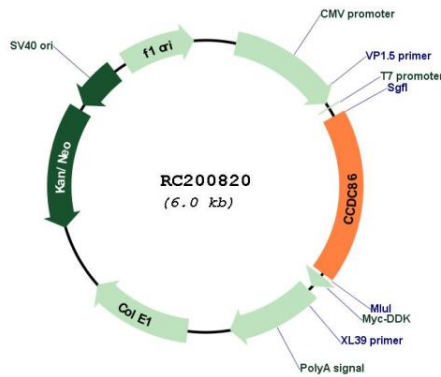
UniProt ID: [Q9H6F5](#)

Cytogenetics: 11q12.2

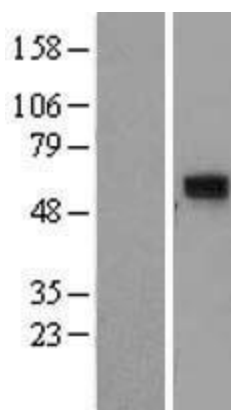
Protein Families: Druggable Genome

MW: 40.2 kDa

Product images:



Circular map for RC200820



Western blot validation of overexpression lysate (Cat# [LY411369]) using anti-DDK antibody (Cat# [TA50011-100]). Left: Cell lysates from untransfected HEK293T cells; Right: Cell lysates from HEK293T cells transfected with RC200820 using transfection reagent MegaTran 2.0 (Cat# [TT210002]).