

Product datasheet for **RC200813**

Zinc finger protein 668 (ZNF668) (NM_024706) Human Tagged ORF Clone

Product data:

Product Type:	Expression Plasmids
Product Name:	Zinc finger protein 668 (ZNF668) (NM_024706) Human Tagged ORF Clone
Tag:	Myc-DDK
Symbol:	Zinc finger protein 668
Mammalian Cell Selection:	Neomycin
Vector:	pCMV6-Entry (PS100001)
E. coli Selection:	Kanamycin (25 ug/mL)



[View online »](#)

ORF Nucleotide Sequence:

>RC200813 representing NM_024706
 Red=Cloning site Blue=ORF Green=Tags(s)

TTTTGTAATACGACTCACTATAGGGCGGCCGGGAATTCGTCGACTGGATCCGGTACCGAGGAGATCTGCC
 GCCGCGATCGCC

ATGGAAGTGGAGGCTGCAGAGGCCCGTCCCCAGCCCCGGCTACAAGCGCTCGGGCCCGCTACAAGT
 GCCTGTCTGTACCAAGACATTTCCAAACGCGCCAGGGCAGCGGCCACGCTGCCACACATGGGCCGGC
 AGACTGCTCTGAAGAGGTGGCCGAGGTGAAGCCAAAGCCAGAGACAGAAGCTAAGGCAGAGGAAGCCAGT
 GGGGAGAAGGTGTGAGGCTCCGCGGCCAAGCCTAGGCCCTATGCGTGTCCGCTATGCCCCAAGGCCTACA
 AGACGGCACCCGAGCTGCGCAGCCACGGGCGCAGCCACACGGGGAGAAGCCCTTCCGTGCCCCGAGTG
 CGGCCCGCGTTCATGCAGCCGTGTGCCTGCGCGTGCACCTGGCCTCGCACGCTGGCGAACTGCCCTTC
 CGTGTGCGCACTGCCGAAGGCCTATGGCGCGCTCTCCAAGCTCAAGATCCACCAGCGTGGCCACACAG
 GCGAGCGGCCTTACGCCGCGCCGACTGCGGCAAGAGCTTTGCTGACCCTTCAGTGTCCGCAAGCACCG
 GCGTACTCAGCTGGCCTGCGGCCCTACAGCTGTGAGCGTTGCGGCAAAGCCTATGCGGAGCTCAAGGAC
 CTCGCAACCATGAGCGTCCCACACCGCGAGCGCCCTTCTCTGCTCCGAGTGGGGAAGAGCTTCT
 CCCGCTCATCCTCGCTCAGTGCACCGCAGCGCATCCACGCGGCACAGAAGCCCTACCGTGGCCGGCCTG
 CGGCAAGGGCTTACGCAGCTCAGTTTCTACCAGAGCCACGAGCGCACGCACTCGGGGAGAAGCCCTTC
 CTGTGCCCGCGTGCAGCCGATGTTTCTCCGACCCTCGAGTTCGTCGCCACCGCGCCCATGAAG
 AGGTGAAGCCATACCACTGCGAGAAGTGCAGCAAGGACTTCCGGCAGCCGGCGGACTGGCCATGCACCG
 GCGTGTGCACACAGGCGACCGCCGTTCAAGTGCCTGCAATGTGACAAGACGTTTCGTGGCGTCTGGGAC
 CTCGAGCGTGCAGCCTCACGAAGCATAGCCGGTGCACCTCGGGGAGCGCCCTTCCACTGTAACGCATG
 TGGGAAATCCTTTGTGGTGTCTCGAGCCTGAGGAAGCACGAGCGGACCCATCGAAGCAGTGGGCCGCG
 GGTGTGCCCTGCACAGGAGCTGGTGGTGGGGTGGCGTGCCTGTGGCGTGGCAGGTGAGAGTTCAG
 CCGCCCCGCGCAGGGGCGGGCTGGGGACCCTCCAGCAGGGCTGCTAGGGTGGCCCCGGAGTCAGG
 TGGTGTGATGGCCACACAGTGGCAGGTGGTGGCATGACGGTGGAGCATGTGGAATGCCAAGATGCTGGT
 GTCGGGAGGCTCCTGGTCCCTTGAAGGGCAGGCGAGGCGGGGGTGGAGGCTGACGAGAAGCCCC
 CCCAGTTTGTGTGCCGAGAGTGAAGGAGACCTTCTCCACAATGACGCTGCTGCGTGGCAGCAGCGCTC
 ACACCCGAGCTCCGGCCCTCCCTGCACCCAGTGCAGCAAGAGCTTCTGACCGGGTGGGCTGCGC
 AAACACAGCCGACTCACAGCTCAGTGCAGCCCTACACCTGCCCCATTGTCCAAAGCCCTCTTGAGTG
 CCAGCGACTTGCAGCATGAACGCACCCACCCTGTGCCATGGGGACCCACACCCCTGGAGCCCT
 GGTGGCTTGTAGGAATGCCTGAAGAGGGCCGGCC

ACGCGTACGCGGCCGCTCGAGCAGAACTCATCTCAGAAGAGGATCTGGCAGCAAATGATATCCTGGATT
 ACAAGGATGACGACGATAAGGTTTAA

Protein Sequence:

>RC200813 representing NM_024706
 Red=Cloning site Green=Tags(s)

MEVEAAEARSPAPGYKRSGRRYKLSCTKTFPNAPRAARHAATHGPADCSEEVAEVKKPKPETEAKAEAS
 GEKVSLSAAKPRPYACPLCPKAYKTAPELRSHGRSHTGEKPFPCPECGRRFMQPVCLRVHLASHAGELPF
 RCAHCPKAYGALSKLKIHQRGHTGERPYACADCGKSFADPSVFRKHRRTHAGLRPYSCERCCKAYAEKLD
 LRNHRSHTGERPFLCSECGKFSRSSLTCHQRIHAAQKPYRCPACGKGFQLSSYQSHERTHSKEKPF
 LCPRCGRMFDSPSSFRRHQRAHEEVKPYHCEKCGKDFRQPADLAMHRRVHTGDRPFKCLQCDKTFVASWD
 LKRHALVHSGRPFRCCECGRAFAERASLTKHSRVHSGERPFHCNACGKSFVVSSLRKHHERTHRSSEAA
 GVPPAQELVVGLALPVGVAGESSAAPAAGAGLDPPAGLLGLPPESGGVMATQWQVVGMTVEHVECQDAG
 VREAPGLEGAGEAGGEEADEKPPQFVCRECKETFSTMTLLRRHERSHPPELRPFCTQCGKSFSDRAGLR
 KHSRTHSSVRPYTCPHCPKAFLSASDLRKHHERTHPVMGTPPTLEPLVALLGMPEEPA

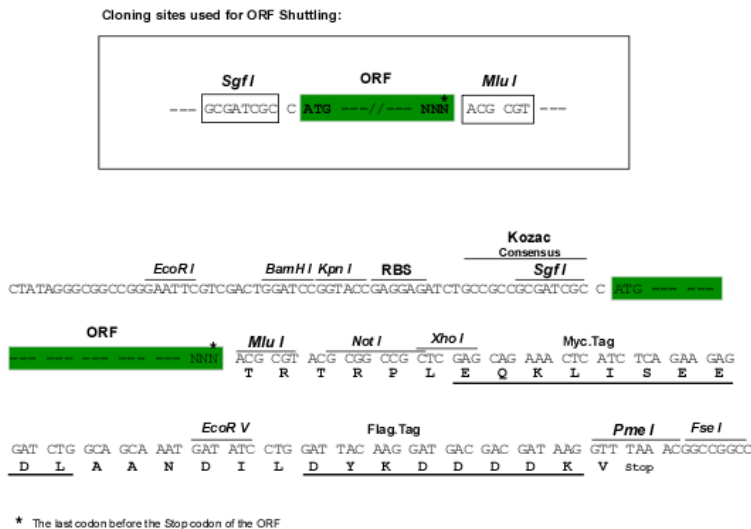
TRTRPLEQKLISEEDLAANDILDYKDDDDKV

Chromatograms:

https://cdn.origene.com/chromatograms/mg4263_a09.zip

Restriction Sites: SgfI-MluI

Cloning Scheme:



ACCN: NM_024706

ORF Size: 1857 bp

OTI Disclaimer: The molecular sequence of this clone aligns with the gene accession number as a point of reference only. However, individual transcript sequences of the same gene can differ through naturally occurring variations (e.g. polymorphisms), each with its own valid existence. This clone is substantially in agreement with the reference, but a complete review of all prevailing variants is recommended prior to use. [More info](#)

OTI Annotation: This clone was engineered to express the complete ORF with an expression tag. Expression varies depending on the nature of the gene.

Components: The ORF clone is ion-exchange column purified and shipped in a 2D barcoded Matrix tube containing 10ug of transfection-ready, dried plasmid DNA (reconstitute with 100 ul of water).

Reconstitution Method:

1. Centrifuge at 5,000xg for 5min.
2. Carefully open the tube and add 100ul of sterile water to dissolve the DNA.
3. Close the tube and incubate for 10 minutes at room temperature.
4. Briefly vortex the tube and then do a quick spin (less than 5000xg) to concentrate the liquid at the bottom.
5. Store the suspended plasmid at -20°C. The DNA is stable for at least one year from date of shipping when stored at -20°C.

Note: Plasmids are not sterile. For experiments where strict sterility is required, filtration with 0.22um filter is required.

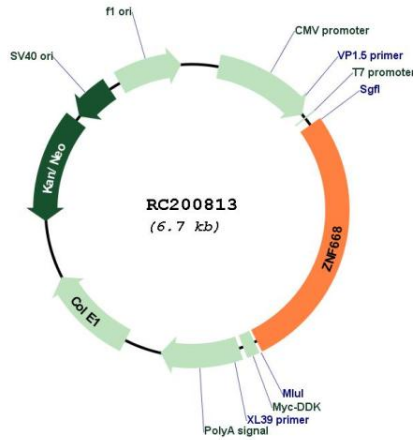
RefSeq: [NM_024706.3](#), [NP_078982.2](#)

RefSeq Size: 2649 bp

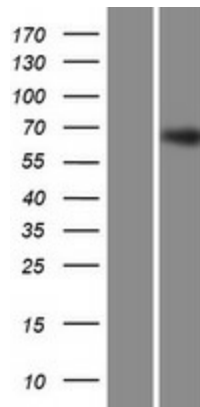
RefSeq ORF: 1860 bp

Locus ID: 79759
UniProt ID: [Q96K58](#)
Cytogenetics: 16p11.2
Domains: zf-C2H2
MW: 67.7 kDa
Gene Summary: May be involved in transcriptional regulation.[UniProtKB/Swiss-Prot Function]

Product images:



Circular map for RC200813



Western blot validation of overexpression lysate (Cat# [LY411162]) using anti-DDK antibody (Cat# [TA50011-100]). Left: Cell lysates from untransfected HEK293T cells; Right: Cell lysates from HEK293T cells transfected with RC200813 using transfection reagent MegaTran 2.0 (Cat# [TT210002]).