

Product datasheet for **RC200809**

MTMR14 (NM_022485) Human Tagged ORF Clone

Product data:

Product Type:	Expression Plasmids
Product Name:	MTMR14 (NM_022485) Human Tagged ORF Clone
Tag:	Myc-DDK
Symbol:	MTMR14
Synonyms:	C3orf29
Mammalian Cell Selection:	Neomycin
Vector:	pCMV6-Entry (PS100001)
E. coli Selection:	Kanamycin (25 ug/mL)



[View online »](#)

ORF Nucleotide Sequence:

>RC200809 ORF sequence
 Red=Cloning site Blue=ORF Green=Tags(s)

TTTTGTAATACGACTCACTATAGGGCGGCCGGGAATTCGTCGACTGGATCCGGTACCGAGGAGATCTGCC
 GCC**CGCATCGCC**

ATGGCCGGCGCTCGGGCCGCCGCCCGCTGCCTCGGCGGGTCTCGGCCTCTTCAGGCAACCAGCCGC
 CTCAGGAGCTGGGCTTGGGGAGCTGCTGGAGGATTCTCCCGGACTCAGTACCGGGCCAAGGATGGCAG
 CGGGACCGCGGCTCTAAGGTTGAGCGCATTGAGAAGAGATGTCTGGAGCTGTTTGGCCGAGACTACTGT
 TTCAGCGTGATTCCAAACACGAATGGGGATATCTGTGGCCACTATCCCGGCACATCGTGTCTCGGAGT
 ATGAGAGTTCTGAGAAGGAGAAAGACACGTTTGTAGAGTACCGTACAGGTGAGCAAGTTGCAAGACCTCAT
 CCACCGCAGCAAGATGGCCCGTGCAGAGGACGGTTTGTCTGCCAGTAATCCTGTTCAAGGGCAAGCAC
 ATTTGCAGGTGGCCCACTGGCTGGATGGGGAGAGCTGTATGGACGCTCAGGCTACAATATTTTTTCT
 CAGGGGTGCAGATGATGCTGGCAGATGTGGAGGACGTACGGAGGAGGACTGTGCTCTCGAAGTGG
 TGACACGCATCTTTTGTAAAGGTCAGAGGCTATGACATCAAGCTGCTTCGATACCTGTCAAGTAAAC
 ATCTGTGACCTGATGGTGGAGAACAAGAAGGTGAAGTTTGGCATGAATGTAACTCCTCTGAGAAGTGG
 ACAAAGCCAGCGCTATGCCGACTTCACTCTCCTCTCCATCCCGTATCCAGGCTGTGAATTTTTCAAGGA
 ATATAAGATCGGGATTACATGGCAGAAGGGCTCATATTTAACTGGAAGCAGGACTACGTTGATGCCCA
 TTGAGCATCCCGACTTCTGACTCACTCTCTGAACATTGACTGGAGCCAGTATCAGTGTGGGACTCG
 TGCAACAAACACAAAACCTGAAGCTGCTGCTTTCCTTAGTTAACAGTGATGATGACAGCGGGCTGCT
 GGTACTGTATCTCAGGCTGGGATCGGACCCCTCTCATCTCCCTCTGCGCCTTTCCTTGTGGGCT
 GATGGGCTCATCCACACGTCCCTGAAGCCACTGAGATCCTCTACCTCACTGTGGCCTATGACTGGTTC
 TCTTCGGGCACATGTTGGTAGATCGGCTCAGCAAAGGGGAGGAGATTTTCTTCTCTCAATTTTTT
 GAAGCATATTACCTCCGAGGAGTTCTCTGCTCTGAAGACCAGAGGAGGAAGATTTGCCAGCCCGGAT
 GGAGGCTTACCCTGGAAGACATCTGCATGCTGAGACGAAAGGACCGTGGCAGCACCACCAGCCTTGGCA
 GCGACTTCTCCCTGGTATGGAGAGTTCGCCAGGAGCCACTGGGAGCTTACCTATGAGGCCGTGGAGCT
 GGTCCCAGCAGGAGCGCAACTCAGGCAGCTTGGCTTGCAGCCCTGAGTATCGAGAGACTCGGCTGCAG
 GAGGTGCGCTCAGCCTTCTGGCTGCGTACAGCAGCACAGTGGGGCTTCGGGCAGTAGCCCCAGTCCTT
 CCGGTGCCATCGGGGCCTGCTGGAGCAATTTGCCCGTGGTGTGGACTCCGGAGCATCAGCAGCAATGC
 CTTG

ACGCGTACGCGGCCGCTCGAGCAGAAACTCATCTCAGAAGAGGATCTGGCAGCAAATGATATCCTGGATT
 ACAAGGATGACGACGATAAGGTTTAA

Protein Sequence:

>RC200809 protein sequence
 Red=Cloning site Green=Tags(s)

MAGARAAAAAASAGSSASSGNQPPQELGLGELLEEF SRTQYRAKDGSGTGGSKVERIEKRCLLELFRDYC
 FSVIPNTNGDICGHYPRHIVFLEYESSEKEKDTFESTVQVSKLQDLIHRSKMARCRGRFVCPVILFKGKH
 ICRSATLAGWELYGRSGYNYFFSGGADDAWADVTEEDCALRSGDTHLFDKVRGYDIKLLRYSVKY
 ICDLMVENKKVKFGMNVTSSEKVDKAQRYADFTLLSIPYPGCEFFKEYKDRDYMAEGLIFNWKQDYVDAP
 LSIPDFLTHSLNIDWSQYQCWDLVQQTQNYLKL LLLSLVNSDDDSGLLVHCISGWDRTPLFISLLRSLWA
 DGLIHTSLKPTEILYLTVAYDWFLFGHMLVDRLSKGEEIFFFCFNFLKHITSEEF SALKTQRRKSLPARD
 GGF TLEDICMLRRKDRGTTSLGSDFSLVMESSPGATGSFTYEAVELVPAGAPTQAAWLAALSDRETRLQ
 EVRSAFLAAYSSTVGLRAVAPSPSGAIGLLEQFARGVGLRSISSNAL

TRTRPLEQKLISEEDLAANDILDYKDDDDKV

Chromatograms:

https://cdn.origene.com/chromatograms/mk6206_d05.zip

Restriction Sites:

Sgfl-MluI

Cloning Scheme:


ACCN: NM_022485

ORF Size: 1614 bp

OTI Disclaimer: The molecular sequence of this clone aligns with the gene accession number as a point of reference only. However, individual transcript sequences of the same gene can differ through naturally occurring variations (e.g. polymorphisms), each with its own valid existence. This clone is substantially in agreement with the reference, but a complete review of all prevailing variants is recommended prior to use. [More info](#)

OTI Annotation: This clone was engineered to express the complete ORF with an expression tag. Expression varies depending on the nature of the gene.

Components: The ORF clone is ion-exchange column purified and shipped in a 2D barcoded Matrix tube containing 10ug of transfection-ready, dried plasmid DNA (reconstitute with 100 ul of water).

- Reconstitution Method:**
1. Centrifuge at 5,000xg for 5min.
 2. Carefully open the tube and add 100ul of sterile water to dissolve the DNA.
 3. Close the tube and incubate for 10 minutes at room temperature.
 4. Briefly vortex the tube and then do a quick spin (less than 5000xg) to concentrate the liquid at the bottom.
 5. Store the suspended plasmid at -20°C. The DNA is stable for at least one year from date of shipping when stored at -20°C.

Note: Plasmids are not sterile. For experiments where strict sterility is required, filtration with 0.22um filter is required.

RefSeq: [NM_022485.5](#)

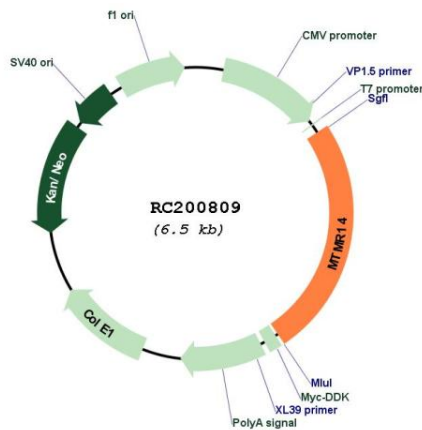
RefSeq Size: 2200 bp

RefSeq ORF: 1617 bp

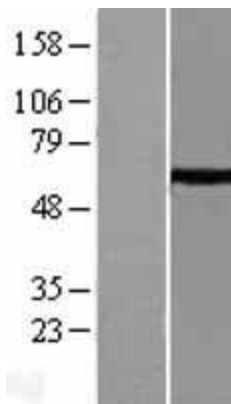
Locus ID: 64419

UniProt ID: [Q8NCE2](#)
Cytogenetics: 3p25.3
Protein Families: Druggable Genome, Phosphatase, Secreted Protein
MW: 60 kDa
Gene Summary: This gene encodes a myotubularin-related protein. The encoded protein is a phosphoinositide phosphatase that specifically dephosphorylates phosphatidylinositol 3,5-biphosphate and phosphatidylinositol 3-phosphate. Mutations in this gene are correlated with autosomal dominant centronuclear myopathy. Alternate splicing results in multiple transcript variants. A pseudogene of this gene is found on chromosome 18.[provided by RefSeq, Apr 2010]

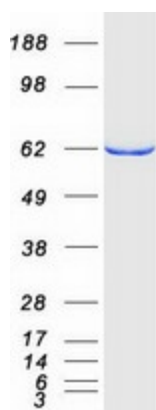
Product images:



Circular map for RC200809



Western blot validation of overexpression lysate (Cat# [LY411652]) using anti-DDK antibody (Cat# [TA50011-100]). Left: Cell lysates from untransfected HEK293T cells; Right: Cell lysates from HEK293T cells transfected with RC200809 using transfection reagent MegaTran 2.0 (Cat# [TT210002]).



Coomassie blue staining of purified MTMR14 protein (Cat# [TP300809]). The protein was produced from HEK293T cells transfected with MTMR14 cDNA clone (Cat# RC200809) using MegaTran 2.0 (Cat# [TT210002]).