

Product datasheet for **RC200808**

SLC35A4 (NM_080670) Human Tagged ORF Clone

Product data:

Product Type:	Expression Plasmids
Product Name:	SLC35A4 (NM_080670) Human Tagged ORF Clone
Tag:	Myc-DDK
Symbol:	SLC35A4
Mammalian Cell Selection:	Neomycin
Vector:	pCMV6-Entry (PS100001)
E. coli Selection:	Kanamycin (25 ug/mL)
ORF Nucleotide Sequence:	>RC200808 ORF sequence Red=Cloning site Blue=ORF Green=Tags(s)

TTTTGTAATACGACTCACTATAGGGCGGCCGGGAATTCGTCGACTGGATCCGGTACCGAGGAGATCTGCCGCC**CGATCGCC**

ATGAGTGTAGAGGATGGGGGTATGCCAGGCCTGGGCCGTCCCAGGCAGGCCCGCTGGACCCTGATGCTACTCCTATCCACTGCCATGTACGGTGCCCATGCCCATTTGCTGGCACTGTGCCATGTGGACGGCCGAGTGCCCTTCCGGCCCTCCTCAGCCGTGCTGCTGACTGAGCTGACCAAGCTACTGTTATGCGCCTTCTCCCTTCTGTAGGCTGGCAAGCATGGCCCCAGGGGCCCCACCCTGGCGCCAGGCTGCTCCCTTCGCACTATCAGCCCCTGCTCTATGGCGCTAACAAACACCTGGTGATCTATCTTCAGCGTTACATGGACCCAGCACCTACCAGTGCTGAGTAATCTCAAGATTGGAAGCACAGCTGTGCTCTACTGCCTCTGCCTCCGGCACCGCCTCTCTGTGCGTCAGGGGTTAGCGCTGCTGCTGATGGTGCAGGAGCCTGCTATGCAGCAGGGGCCCTTCAAGTTC CCGGGAACACCCTTCCCAGTCCCCTCCAGCAGCTGCTGCCAGCCCCATGCCCTGCATATCACTCCGCTAGGCCTGCTGCTCCTCATTCTGTACTGCCTCATCTCAGGCTTGTGTCAGTGTACACAGAGCTGCTCATG AAGCGACAGCGGCTGCCCTGGCACTTCAGAACCTTCTCCTCTACACTTTTGGTGTGCTTCTGAATCTAG GTCTGCATGCTGGCGGGCTCTGGCCAGGCCTCCTGGAAGTTTCTCAGGATGGGCAGCACTCGTGGT GCTGAGCCAGGCACTAAATGGACTGCTCATGTCTGCTGCATGAAGCATGGCAGCAGCATCACACGCCCTC TTTGTGGTGTCTGCTCGCTGGTGGTCAACGCCGTGCTCTCAGCAGTCTGCTACGGCTGCAGCTCACAG CCGCCTTCTCCTGGCCACATTGCTCATTGGCCTGGCCATGCGCCTGTACTATGGCAGCCGC

ACGCGTACGCGGCCGCTCGAGCAGAAACTCATCTCAGAAGAGGATCTGGCAGCAAATGATATCCTGGATTACAAGGATGACGACGATAAGGTTTAA



[View online »](#)

Protein Sequence: >RC200808 protein sequence
 Red=Cloning site Green=Tags(s)

MSVEDGGMPGLGRPRQARWTLMLLLSTAMYGAHAPLLALCHVDGRVFPFPSSAVLLTELTKLLLCAFSLL
 VGWQAWPQGGPPWRQAAPFALSALLYGANNLVIYLQRYMDPSTYQVLSNLKIGSTAVLYCLCLRHLRSV
 RQGLALLLLMAAGACYAAGGLQVPGNTLPSPPPAAAASPMPLHITPLGLLLLILYCLISGLSSVYTELLM
 KRQRLPLALQNLFLYTFGVLLNLGLHAGGGSGPGLLEGFSGWAALVVLSQLNGLLMSAVMKHGSSITRL
 FVVSCSLVYNAVLSAVLLRLQLTAAFFLATLLIGLAMRLYYGSR

TRTRPLEQKLISEEDLAANDILDYKDDDDKV

Chromatograms: https://cdn.origene.com/chromatograms/mk6417_a05.zip

Restriction Sites: Sgfl-MluI

Cloning Scheme:

Cloning sites used for ORF Shuttling:



* The last codon before the Stop codon of the ORF

ACCN: NM_080670

ORF Size: 972 bp

OTI Disclaimer: The molecular sequence of this clone aligns with the gene accession number as a point of reference only. However, individual transcript sequences of the same gene can differ through naturally occurring variations (e.g. polymorphisms), each with its own valid existence. This clone is substantially in agreement with the reference, but a complete review of all prevailing variants is recommended prior to use. [More info](#)

OTI Annotation: This clone was engineered to express the complete ORF with an expression tag. Expression varies depending on the nature of the gene.

Components: The ORF clone is ion-exchange column purified and shipped in a 2D barcoded Matrix tube containing 10ug of transfection-ready, dried plasmid DNA (reconstitute with 100 ul of water).

Reconstitution Method:

1. Centrifuge at 5,000xg for 5min.
2. Carefully open the tube and add 100ul of sterile water to dissolve the DNA.
3. Close the tube and incubate for 10 minutes at room temperature.
4. Briefly vortex the tube and then do a quick spin (less than 5000xg) to concentrate the liquid at the bottom.
5. Store the suspended plasmid at -20°C. The DNA is stable for at least one year from date of shipping when stored at -20°C.

Note: Plasmids are not sterile. For experiments where strict sterility is required, filtration with 0.22um filter is required.

RefSeq: [NM_080670.3](#)

RefSeq Size: 2676 bp

RefSeq ORF: 975 bp

Locus ID: 113829

UniProt ID: [Q96G79](#)

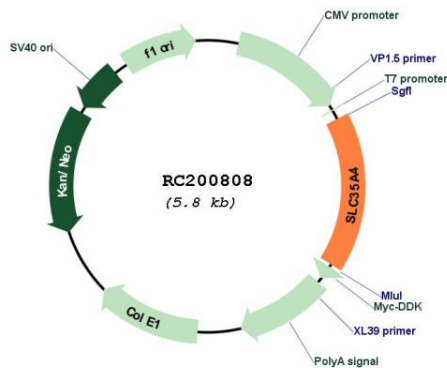
Cytogenetics: 5q31.3

Domains: Nuc_sug_transp

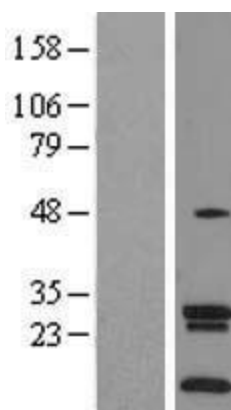
Protein Families: Transmembrane

MW: 34.6 kDa

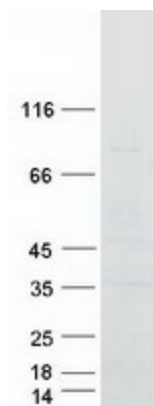
Product images:



Circular map for RC200808



Western blot validation of overexpression lysate (Cat# [LY409055]) using anti-DDK antibody (Cat# [TA50011-100]). Left: Cell lysates from untransfected HEK293T cells; Right: Cell lysates from HEK293T cells transfected with RC200808 using transfection reagent MegaTran 2.0 (Cat# [TT210002]).



Coomassie blue staining of purified SLC35A4 protein (Cat# [TP300808]). The protein was produced from HEK293T cells transfected with SLC35A4 cDNA clone (Cat# RC200808) using MegaTran 2.0 (Cat# [TT210002]).