

Product datasheet for RC200805

KLF13 (NM_015995) Human Tagged ORF Clone

Product data:

Product Type: Expression Plasmids
Product Name: KLF13 (NM_015995) Human Tagged ORF Clone
Tag: Myc-DDK
Symbol: KLF13
Synonyms: BTEB3; FKLF2; NSLP1; RFLAT-1; RFLAT1
Mammalian Cell Selection: Neomycin
Vector: pCMV6-Entry (PS100001)
E. coli Selection: Kanamycin (25 ug/mL)
ORF Nucleotide Sequence: >RC200805 representing NM_015995
 Red=Cloning site Blue=ORF Green=Tags(s)

TTTTGTAATACGACTCACTATAGGGCGCCGGGAATTCGTCGACTGGATCCGGTACCGAGGAGATCTGCC
 GCC**CGATCGCC**

ATGGCAGCCGCCCTATGTGGACCACTTCGCCGCCGAGTGCCTCGTGTCCATGTCGAGCCGCGGGTCCG
 TGCACGGGCCGCGGGAGGGGCCGAGTCCCGGCCGAGGGCGCGGCGTGGCCGCCACCCCCACGCTGCC
 CCGCGTCGAGGAGCGCCGCGACGGTAAGGACAGCGCCTCGCTCTTCGTGGTGGCGGGATCTAGCGGAC
 CTCAACCAGCAAGCGCCGCGCCGCCCGCCCGCGGAGCGCAGGGAGGGCGCCGCGCCGGAAGGCGAGGA
 CCCCCTGCCGCTGCCGCGCCCGCCCGGAGCCACCTCCCCGCGCGCAAGGCGGGCGCCGCGCC
 CCCAGCCCGGCGTGGAGCGAGCCGAGCCGAGCGGGGCTGGAGCCGAGCGGGAGCCGGGGCCCGCG
 GGGAGCGCGAGCCCGCCTCAGACAAAGGTCGGCGGGGCGAAGTCGCGCCGACCTCGAGTCCCCGC
 AGAGGAAGCACAAGTGCCACTACGCGGGCTGCGAGAAAGTTTACGGAAATCTTCGCACCTCAAGGCGCA
 CCTGAGAACTCACACAGGTGAGAGGCCCTTCGCTGCAGCTGGCAGGACTGCAACAAGAAGTTCGCGCGC
 TCCGACGAGCTGGCGGGCACTACCGCACACACGGGCGAGAAGAAGTTCAGCTGCCCCATCTGCGAGA
 AGCGCTTCATGCGCAGCGACCACCTGACCAAGCACGCGCGCCGCCACGCCAACTCCACCCGGGAATGCT
 GCAGCGGCGGGGGGCTCGCGGACCGGCTCCCTCAGCGACTACAGCCGCTCCGACGCCAGCAGCCCC
 ACCATCAGCCCGGCCAGCTCGCCC

ACGCGTACGCGGGCCGCTCGAGCAGAAACTCATCTCAGAAGAGGATCTGGCAGCAAATGATATCCTGGATT
 ACAAGGATGACGACGATAAGGTTTAA



Protein Sequence: >RC200805 representing NM_015995
Red=Cloning site Green=Tags(s)

MAAAAYVDHFAECLVSMSSRAVVHGPREGPESRPEGAAVAATPTLPRVEERRDGKDSASLFVVARILAD
 LNQQAPAPAPAERREGAAARKARTPCRLPPPAPEPTSPGAEGAAAAPPSPAWSEPEPEAGLEPEREPGPA
 GSGEPLRQVRRRGRSRADLESPQRKHKCHYAGCEKVYKSSHLKAHLRTHHTGERPFACSWQDCNKKFAR
 SDELARHYRTHTEKKFSCPICEKRFMRSDHLTKHARRHANFHPGMLQRRGGGSRGTSLSDYSRSDASSP
 TISPASSP

TRTRPLEQKLISEEDLAANDILDYKDDDDKV

Chromatograms: https://cdn.origene.com/chromatograms/mg2469_d02.zip

Restriction Sites: SgfI-MluI

Cloning Scheme:



ACCN: NM_015995

ORF Size: 864 bp

OTI Disclaimer: The molecular sequence of this clone aligns with the gene accession number as a point of reference only. However, individual transcript sequences of the same gene can differ through naturally occurring variations (e.g. polymorphisms), each with its own valid existence. This clone is substantially in agreement with the reference, but a complete review of all prevailing variants is recommended prior to use. [More info](#)

OTI Annotation: This clone was engineered to express the complete ORF with an expression tag. Expression varies depending on the nature of the gene.

Components: The ORF clone is ion-exchange column purified and shipped in a 2D barcoded Matrix tube containing 10ug of transfection-ready, dried plasmid DNA (reconstitute with 100 ul of water).

Reconstitution Method:

1. Centrifuge at 5,000xg for 5min.
2. Carefully open the tube and add 100ul of sterile water to dissolve the DNA.
3. Close the tube and incubate for 10 minutes at room temperature.
4. Briefly vortex the tube and then do a quick spin (less than 5000xg) to concentrate the liquid at the bottom.
5. Store the suspended plasmid at -20°C. The DNA is stable for at least one year from date of shipping when stored at -20°C.

Note: Plasmids are not sterile. For experiments where strict sterility is required, filtration with 0.22um filter is required.

RefSeq: [NM_015995.4](#)

RefSeq Size: 6817 bp

RefSeq ORF: 867 bp

Locus ID: 51621

UniProt ID: [Q9Y2Y9](#)

Cytogenetics: 15q13.3

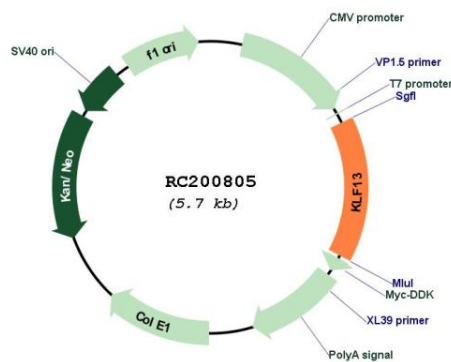
Domains: zf-C2H2

Protein Families: Druggable Genome, Transcription Factors

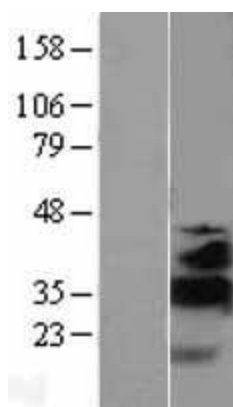
MW: 31 kDa

Gene Summary: KLF13 belongs to a family of transcription factors that contain 3 classical zinc finger DNA-binding domains consisting of a zinc atom tetrahedrally coordinated by 2 cysteines and 2 histidines (C2H2 motif). These transcription factors bind to GC-rich sequences and related GT and CACCC boxes (Schoy et al., 2000 [PubMed 11087666]).[supplied by OMIM, Mar 2008]

Product images:



Circular map for RC200805



Western blot validation of overexpression lysate (Cat# [LY402483]) using anti-DDK antibody (Cat# [TA50011-100]). Left: Cell lysates from untransfected HEK293T cells; Right: Cell lysates from HEK293T cells transfected with RC200805 using transfection reagent MegaTran 2.0 (Cat# [TT210002]).