

Product datasheet for RC200801

SPSB2 (NM_032641) Human Tagged ORF Clone

Product data:

Product Type:	Expression Plasmids
Product Name:	SPSB2 (NM_032641) Human Tagged ORF Clone
Tag:	Myc-DDK
Symbol:	SPSB2
Synonyms:	GRCC9; SSB2
Mammalian Cell Selection:	Neomycin
Vector:	pCMV6-Entry (PS100001)
E. coli Selection:	Kanamycin (25 ug/mL)
ORF Nucleotide Sequence:	>RC200801 ORF sequence Red=Cloning site Blue=ORF Green=Tags(s)

TTTTGTAATACGACTCACTATAGGGCGGCCGGAATTCGTCGACTGGATCCGGTACCGAGGAGATCTGCC
GCC**CGATCGCC**

ATGGGCCAGACAGCTCTGGCAGGGGGCAGCAGCAGCACCCCCACGCCACAGGCCCTGTACCTGACCTCT
CCTGTCCCAGGGCTTGAAGAGCTGTGTCTGCACCCCTCCTGACCTGGGGGCCAGCGGCCACGG
TTGAACCCAAAGACTGTTAGAGAATCGAGGTCAAGGAAGGAGGGTTGTACTTTGAGCGCGGCC
GTGGCCAGAGCACTGATGGGGCCGGGTAAGAGGGCTATTCAAGGGCCTGCACGCTGGGAGATCA
GCTGGCCCTAGAGCAGAGGGGCACGATGCCGTGGTGGCGTGGCCACGGCCCTCGCCCGCTGCAGAC
TGACCACTACGCGCGCTGCTGGCAGCAACAGCGAGTCGTGGGCTGGGACATCGGGCGGGGAAGCTG
TACCATCAGAGCAAGGGGCCGGAGCCCCAGTATCCAGCGGAACTCAGGGTGAAGCAGCTGGAGGTGC
CAGAGAGACTGCTGGTGGTTCTGGACATGGAGGAGGAACTCTGGGCTACGCTATTGGGGCACCTACCT
GGGGCCAGCATTCCGCGGACTGAAGGGCAGGACCCTCTATCCGGCAGTAAGCGCTGTCTGGGGCAGTGC
CAGGTCCGCATCCGCTACCTGGGCGAAAGGAGAGCGGAGCCCACTCCCTTCTGCACCTGAGCCGCTGT
GTGTGCCCAACCTGGGGATACCCGGCTCGGCCAGGTGTCTGCCCTGCCCTGCCCTGCCATGAA
GCGCTACCTGCTTACCAG

ACGCGTACGCGGCCGCTCGAGCAGAAACTCATCTCAGAAGAGGATCTGGCAGCAAATGATATCCTGGATT
ACAAGGATGACGACGATAAGGTTTAA



[View online »](#)

Protein Sequence: >RC200801 protein sequence
Red=Cloning site Green=Tags(s)

MGQTALAGGSSSTPTPQALYPDLSCPEGLEELL SAPPPDLGAQRRHGWNPKDCSENIEVKEGGLYFERRP
 VAQSTDGARGKRGYSRGLHAWEISWPLEQRGTHAVVGVATALAPLQTDHYAALLGSNSESWGWDIGRGKL
 YHQSKGPGAPQYPAGTQGEQLEVPERLLVVLDMEEGLGYAIGGTYLGPAFRGLKGRTLYPAVSAVWGQC
 QVRIRYLGERRAEPHSLHL SRLCVRHNLGDTRLGQVSALPLPPAMKRYLLYQ

TRTRPLEQKLISEEDLAANDILDYKDDDDKV

Chromatograms: https://cdn.origene.com/chromatograms/mk6407_g10.zip

Restriction Sites: SgfI-MluI

Cloning Scheme:

Cloning sites used for ORF Shuttling:



* The last codon before the Stop codon of the ORF

ACCN: NM_032641

ORF Size: 789 bp

OTI Disclaimer: The molecular sequence of this clone aligns with the gene accession number as a point of reference only. However, individual transcript sequences of the same gene can differ through naturally occurring variations (e.g. polymorphisms), each with its own valid existence. This clone is substantially in agreement with the reference, but a complete review of all prevailing variants is recommended prior to use. [More info](#)

OTI Annotation: This clone was engineered to express the complete ORF with an expression tag. Expression varies depending on the nature of the gene.

Components: The ORF clone is ion-exchange column purified and shipped in a 2D barcoded Matrix tube containing 10ug of transfection-ready, dried plasmid DNA (reconstitute with 100 ul of water).

Reconstitution Method:

1. Centrifuge at 5,000xg for 5min.
2. Carefully open the tube and add 100ul of sterile water to dissolve the DNA.
3. Close the tube and incubate for 10 minutes at room temperature.
4. Briefly vortex the tube and then do a quick spin (less than 5000xg) to concentrate the liquid at the bottom.
5. Store the suspended plasmid at -20°C. The DNA is stable for at least one year from date of shipping when stored at -20°C.

RefSeq: [NM_032641.4](#)

RefSeq Size: 1272 bp

RefSeq ORF: 792 bp

Locus ID: 84727

UniProt ID: [Q99619](#)

Cytogenetics: 12p13.31

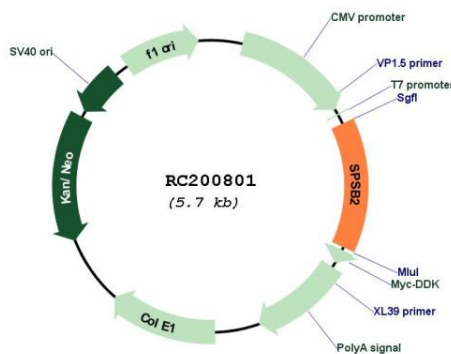
Domains: SOCS, SPRY

Protein Families: Druggable Genome

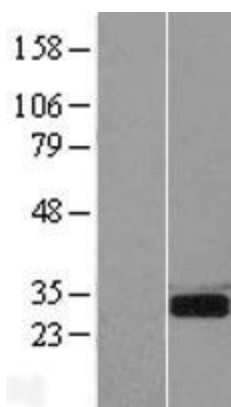
MW: 28.6 kDa

Gene Summary: This gene encodes a member of a subfamily of proteins containing a central SPRY (repeats in splA and RyR) domain and a C-terminal suppressor of cytokine signaling (SOCS) box. This protein plays a role in cell signaling. This gene is present in a gene-rich cluster on chromosome 12p13 in the vicinity of the CD4 antigen and triosephosphate isomerase genes. Alternative splicing results in multiple transcript variants. [provided by RefSeq, Feb 2016]

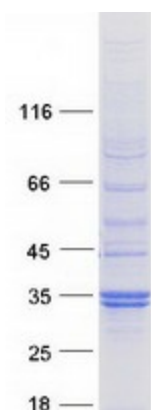
Product images:



Circular map for RC200801



Western blot validation of overexpression lysate (Cat# [LY431815]) using anti-DDK antibody (Cat# [TA50011-100]). Left: Cell lysates from untransfected HEK293T cells; Right: Cell lysates from HEK293T cells transfected with [RC228787] using transfection reagent MegaTran 2.0 (Cat# [TT210002]).



Coomassie blue staining of purified SPSB2 protein (Cat# [TP300801]). The protein was produced from HEK293T cells transfected with SPSB2 cDNA clone (Cat# RC200801) using MegaTran 2.0 (Cat# [TT210002]).